



Lenovo Thinkpad Tablet 1838 Touch Screen Replacement

This guide will show you how to replace the...

Written By: Michael Gaskey



INTRODUCTION

This guide will show you how to replace the touch screen on the Lenovo ThinkPad Tablet 1838.

The touch screen is what allows the users to see images and interact with them with the usage of their fingertips. In the case that these attributes are compromised, such as if the screen is cracked or stopped displaying, replacement of the screen may be needed.

If replacing a glass cracked screen, be cautious of little shards of glass that may be harmful to your body. You can place tape over the screen to make sure that all the pieces of glass are secure.

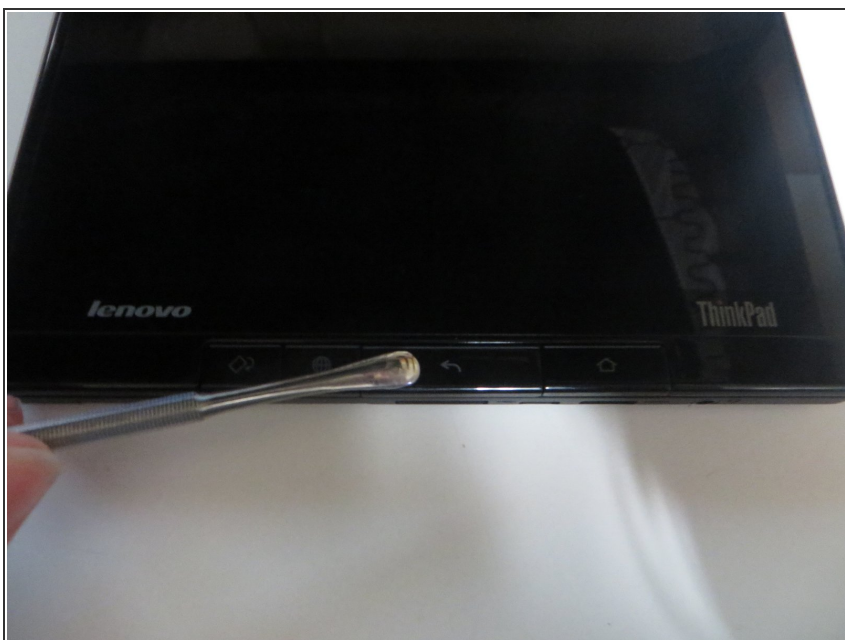
Before using this guide to aid with the replacement of the screen, make sure that device is unplugged and powered off.



TOOLS:

- [Spudger](#) (1)
 - [Phillips #00 Screwdriver](#) (1)
 - [iFixit Opening Tool](#) (1)
-

Step 1 — Touch Screen



- Remove the button with the arrow pointing left.
- ① You can do this by putting the spudger underneath the button and pulling up.

Step 2



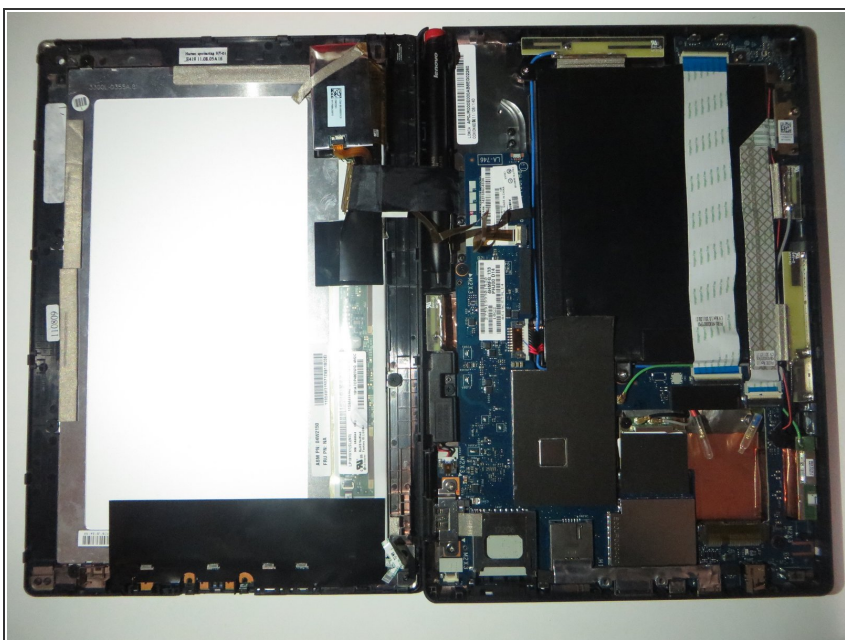
- Remove the two 10mm Phillips #00 screws.

Step 3



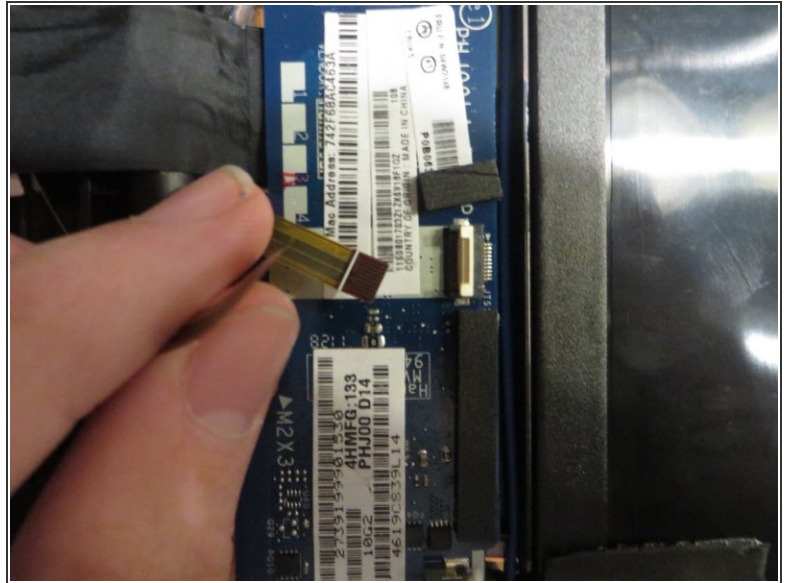
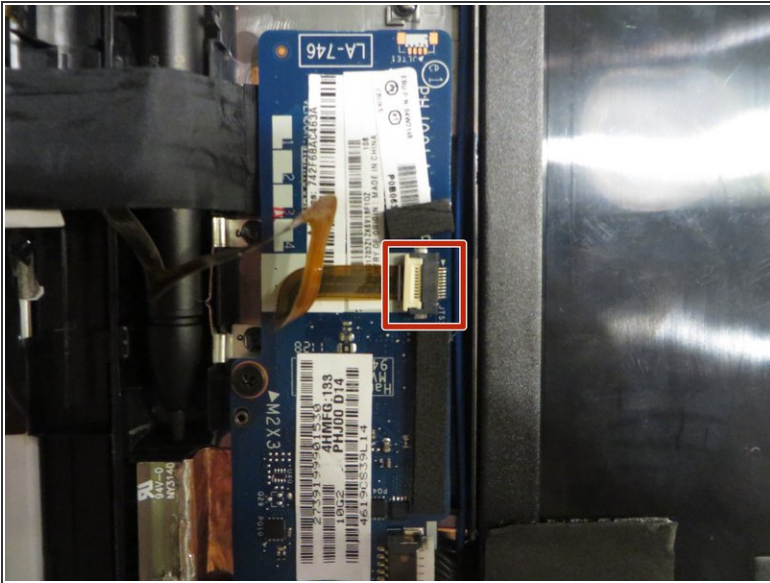
- Use an opening tool to pry open and disconnect the screen from the rest of the tablet.
- ⓘ Be gentle and work from the bottom of the tablet in counterclockwise direction.

Step 4



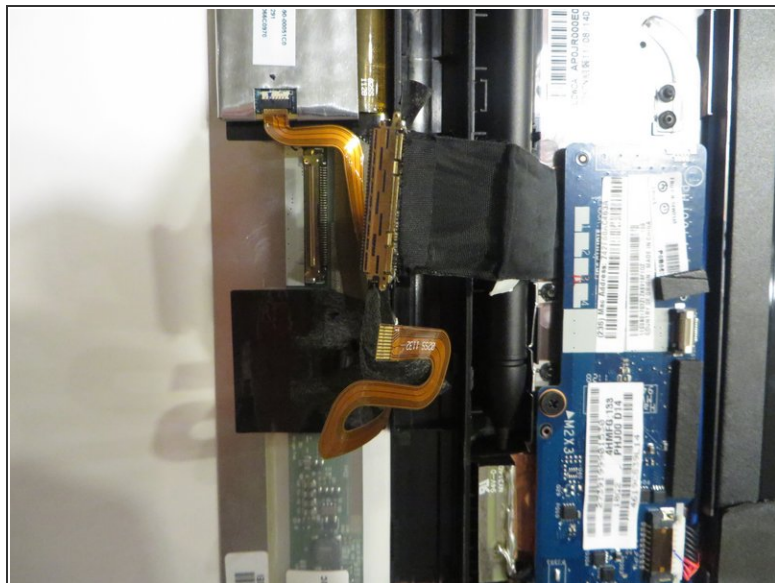
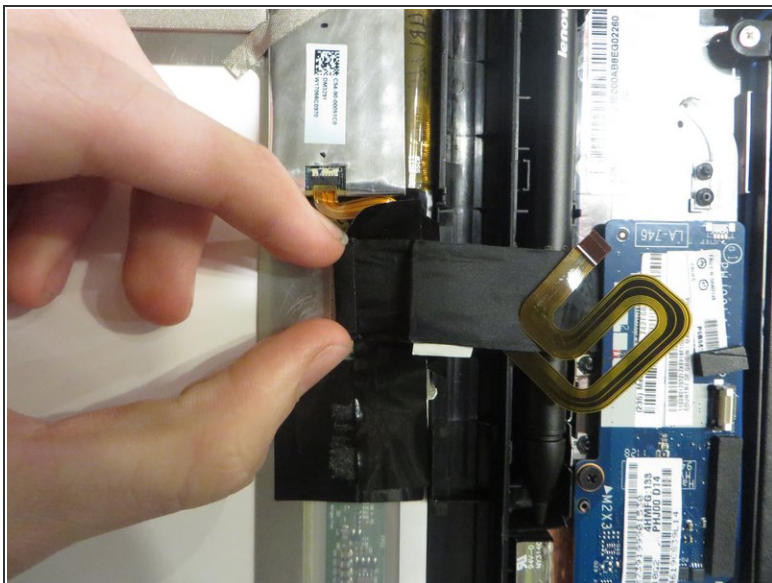
- Open the tablet screen to the left, making sure not to disconnect any of the wires connecting the screen to the tablet.

Step 5



- Disconnect the ribbon connector by pulling up on the white gate.
- Then just simply pull the wire to the left to disconnect it.

Step 6



- Disconnect the last ribbon connector using your fingernails to grip the ends of the connector and gently pull to the left.
- ⓘ There might be some tape over the connector that you will have to remove.

Step 7



- You have successfully removed the old screen.

To reassemble your device, follow these instructions in reverse order.