



Fujitsu M2011 Battery Replacement

This guide will demonstrate how to remove the battery in the Fujitsu M2011 laptop.

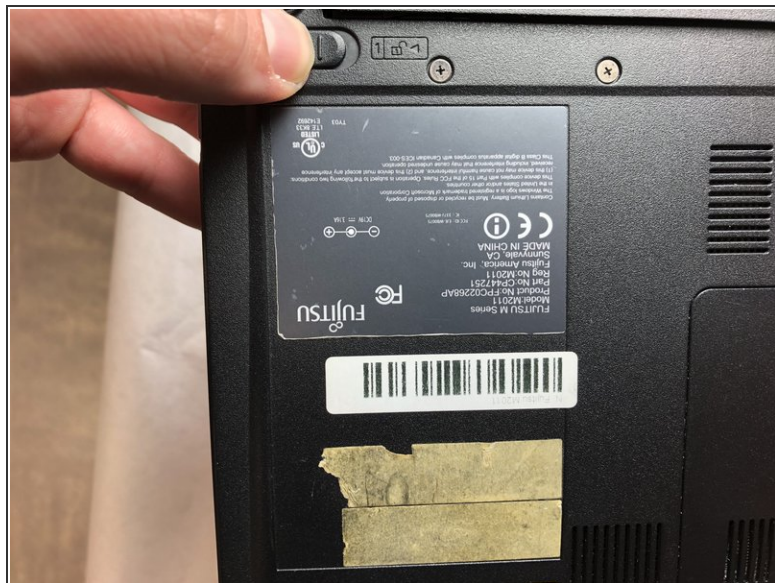
Written By: Bret Tennison



INTRODUCTION

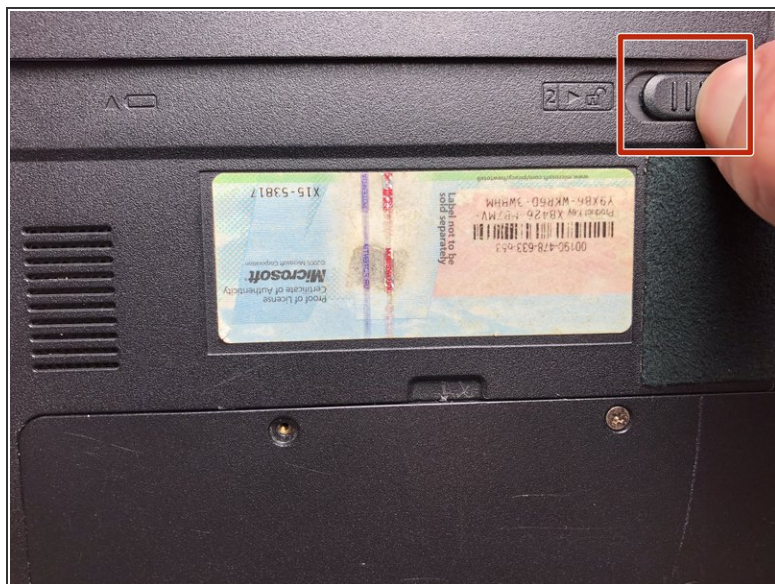
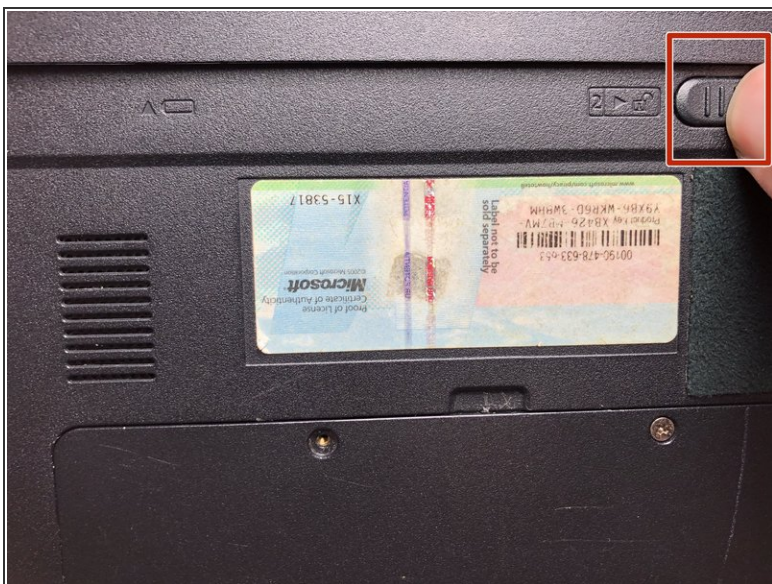
In order to remove the battery there will be no tools required. This repair may be required if your laptop will not turn on, if the battery will not hold a charge, or if the battery is damaged.

Step 1 — Battery



- Slide switch #1 (shown) to the left.

Step 2



- Slide switch #2 (shown) to the right and hold.

Step 3



- Pull the battery straight back out.

To reassemble your device, follow these instructions in reverse order.