



Acer Aspire E1-470P-6659 Hard Drive Replacement

How to replace the hard drive in an Acer Aspire E1-470P-6659

Written By: Siyu Jia



INTRODUCTION

The hard drive provides permanent data storage. Hard drive failure causes crushing laptops and missing files. If your hard drive is diagnosed of irreversible problems, replace it the sooner the better using this guide to prevent larger losses.



TOOLS:

- [Spudger](#) (1)
- [iFixit Opening Tool](#) (1)
- [Phillips #0 Screwdriver](#) (1)



PARTS:

- [250 GB SSD](#) (1)
- [500 GB SSD](#) (1)
- [1 TB SSD](#) (1)
- [2 TB SSD](#) (1)

Step 1 — Battery



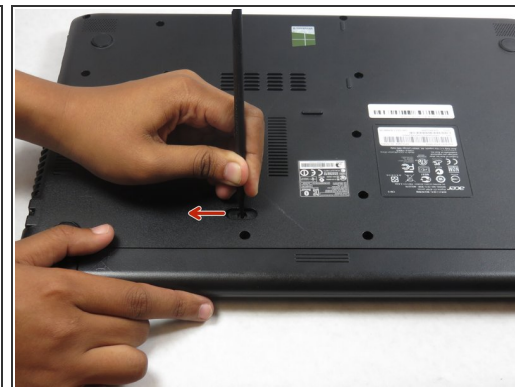
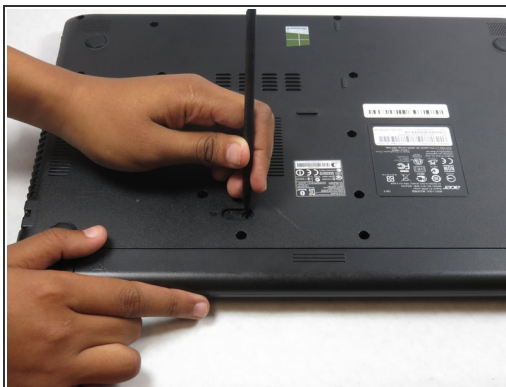
- Turn off the laptop and disconnect all device cords.

Step 2



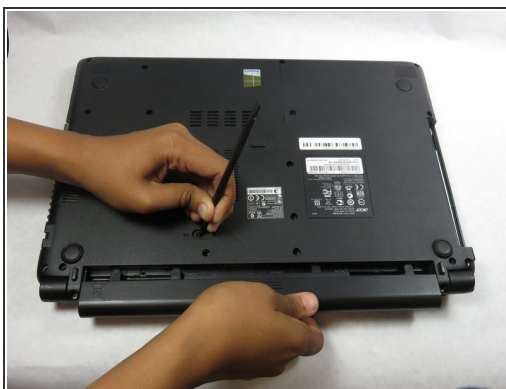
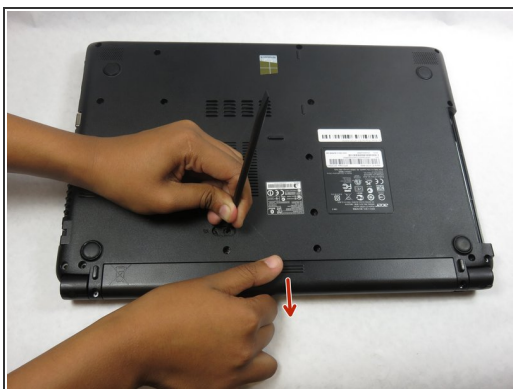
- Flip the laptop over so the bottom is facing you.

Step 3



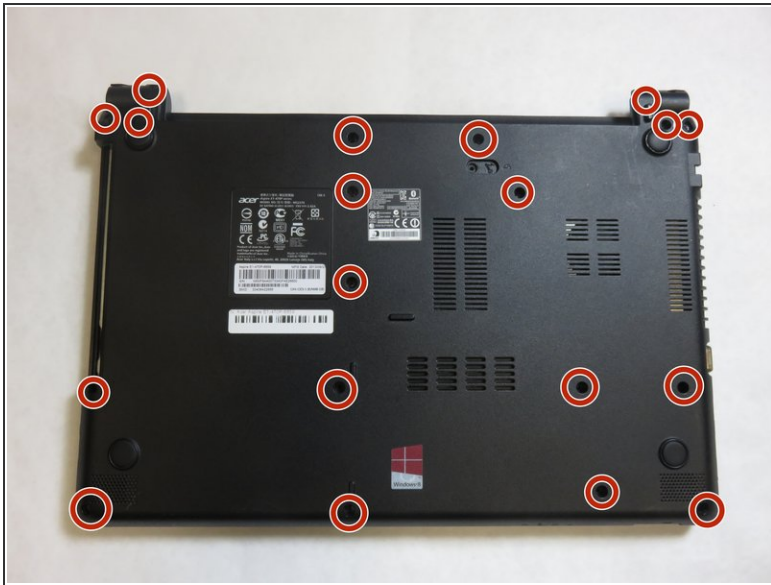
- Use your finger or a spudger to pull the battery release switch.

Step 4



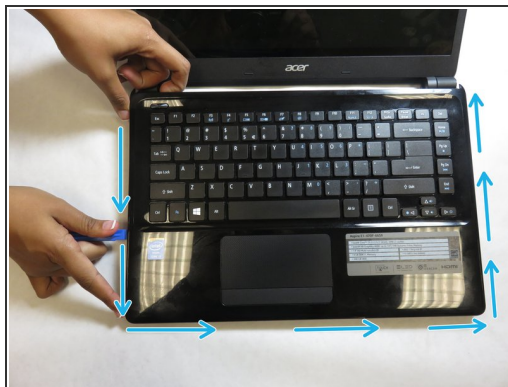
- Remove the battery from the laptop.

Step 5 — Hard Drive



- Remove nineteen screws from the back panel using a Phillips #0 Screwdriver .

Step 6



- Run the plastic opening tool across from one corner to another along the edge.
- Separate the keyboard panel gently.

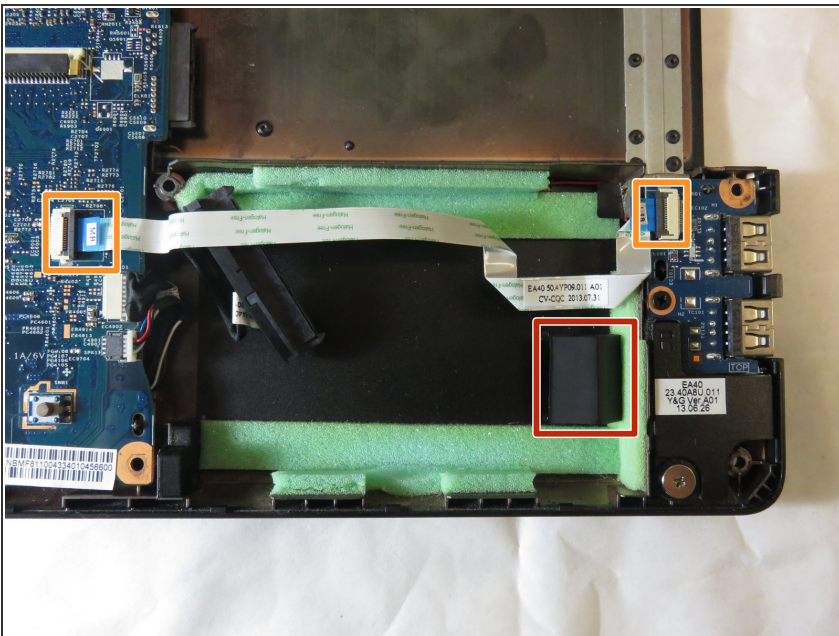
⚠ Lift the keyboard slowly from the laptop but do not lift completely because there are ribbon cables attached.

Step 7



- Disconnect the two keyboard assembly ribbon cables from motherboard.
- To release small ribbon cable, use spudger or fingers to flip gray bar along edge over.
- To release larger ribbon cable, use pry tool or spudger to slide white plastic clip forward.

Step 8



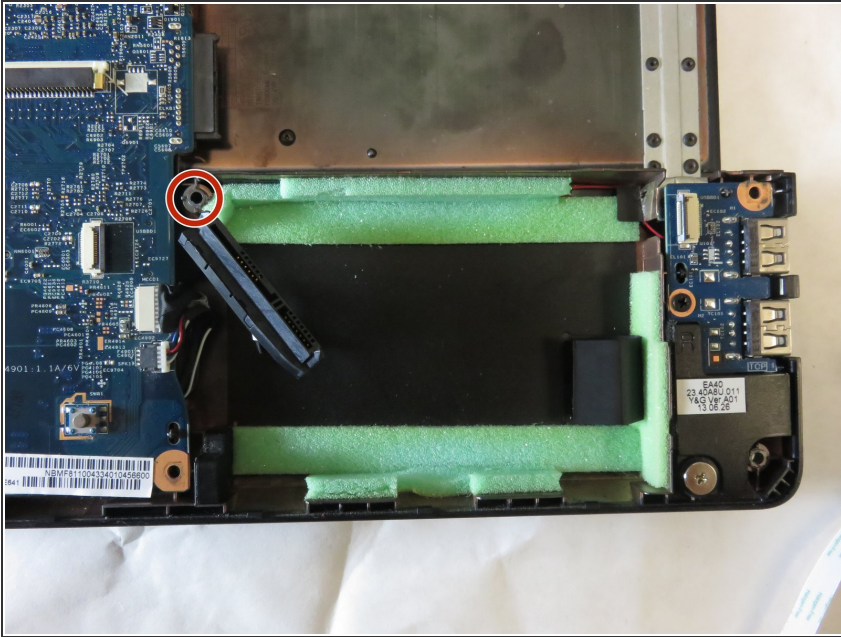
- Pull up the release tab beside the hard drive.
 - Disconnect portion of ribbon cable that is covering the hard drive.
- ⚠ Handle the ribbon carefully. Do not break the metal contact.



While reconnecting the ribbon after replacing a new hard drive, face the blue side with a label up. Make sure

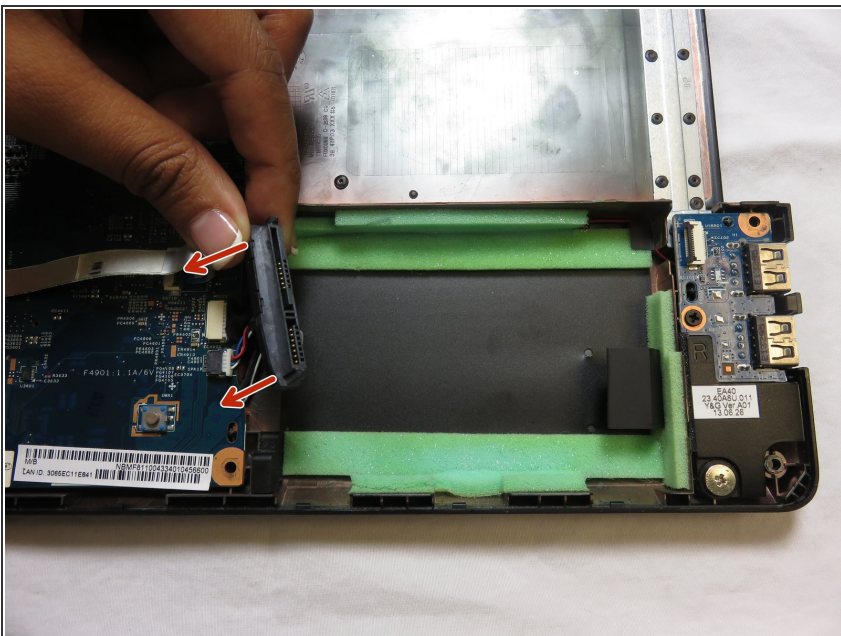
the black line beside the sticker is not crooked, so that the ribbon is tight.

Step 9



- Remove the hard drive screw using Phillips #0 Screwdriver.

Step 10



- Pull the hard drive out gently. Be aware that it is connected to the adapter.
- Gently remove adapter by pulling on both ends simultaneously to separate it from the hard drive.

To reassemble your device, follow these instructions in reverse order.