



Samsung NP-R540-JA09US Front Panel Replacement

Access the inside of the laptop by removing the front panel of your Samsung NP-R540-JA09US.

Written By: Daylyn Bourland



INTRODUCTION

Use this guide to remove the front panel of your laptop to access the inner components of your device.



TOOLS:

- [Phillips #0 Screwdriver](#) (1)
 - [Phillips #00 Screwdriver](#) (1)
 - [iFixit Opening Tool](#) (1)
-

Step 1 — Battery

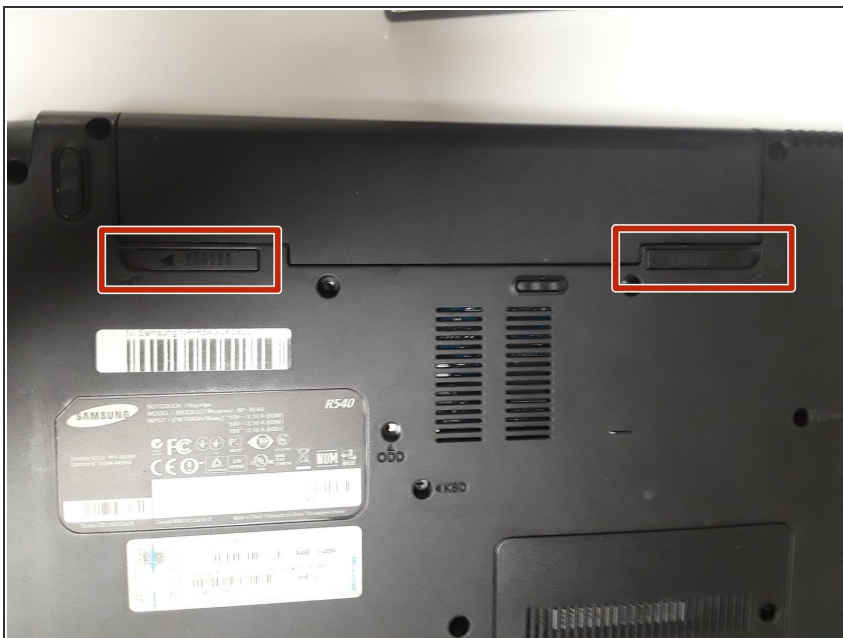


⚠ Turn off laptop before starting.

⚠ Remove power cable before starting.

- Flip the laptop over so that the bottom of the laptop is facing upwards.

Step 2



- Pull the two latches outward.

Step 3



- Slide the battery out of the laptop.

Step 4 — Optical Drive



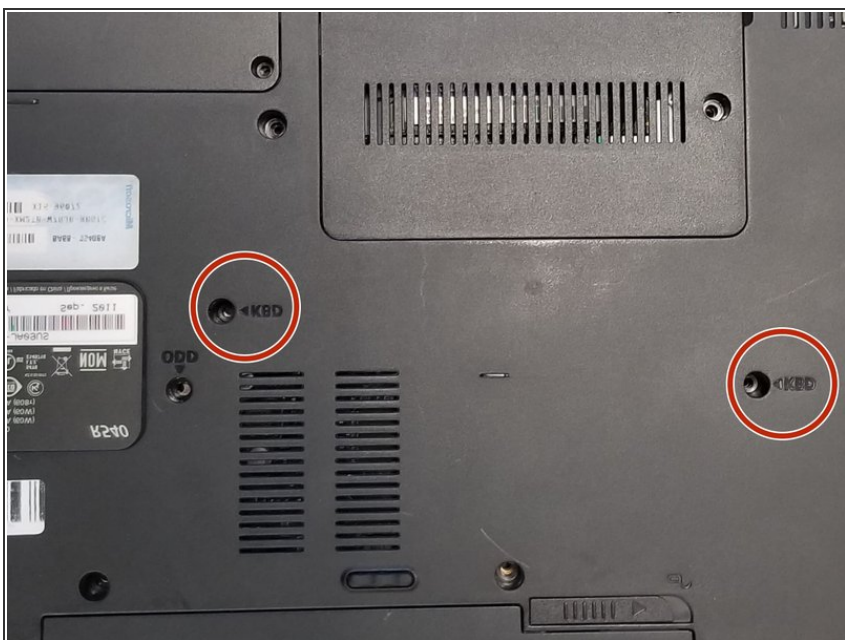
- Remove securing screw with the PH0 head.

Step 5



- Slide the optical drive out and remove it from the device.

Step 6 — Keyboard



- Remove the two Phillips #0 screws labeled KBD.

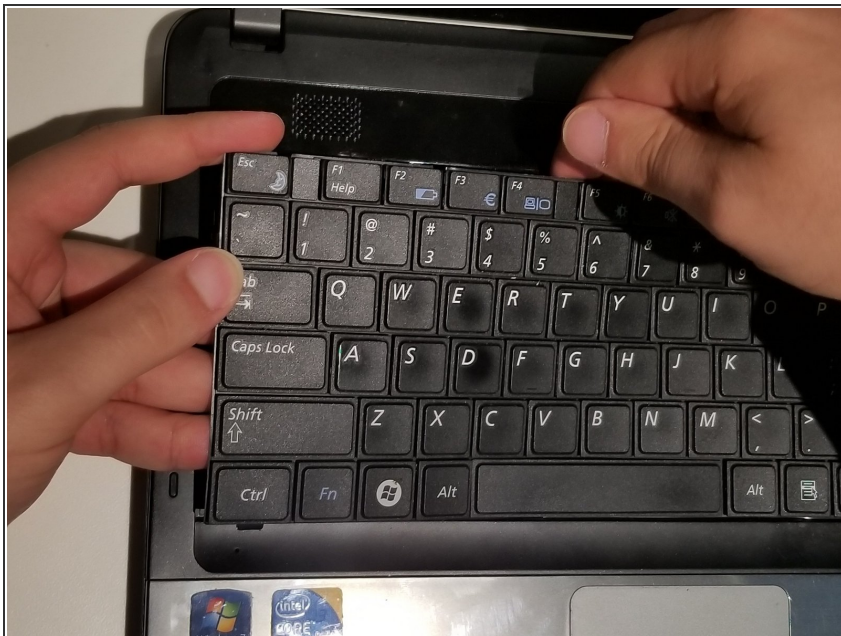
Step 7



- There are 5 clips along the top of the keyboard. Insert a thin opener tool (iSessamo tool or similar) between each clip and the keyboard tray to release it.

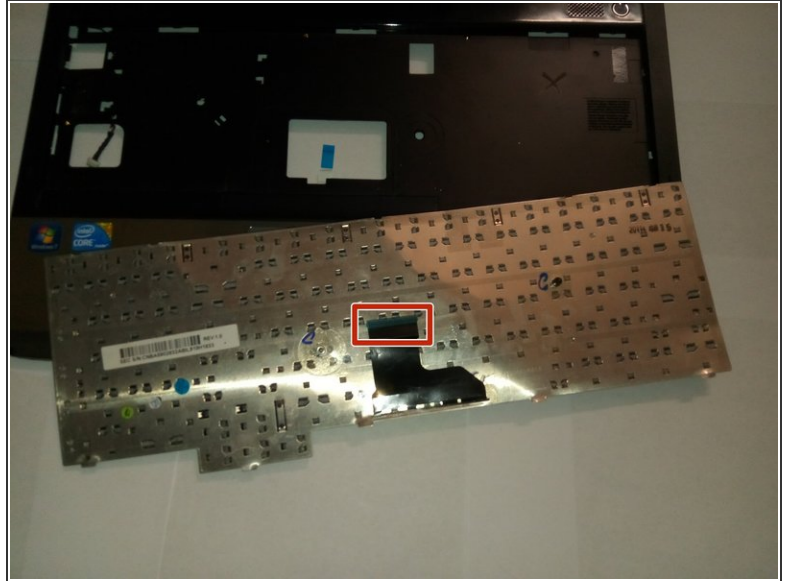
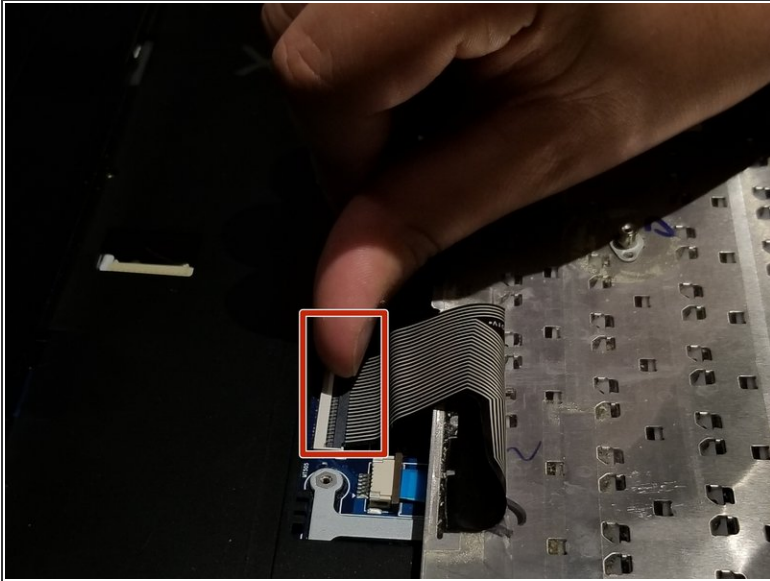
 **Make sure to pry the metal keyboard base and not the keycaps.**

Step 8



- Do not bend your keyboard as shown in this picture.
- Lift the keyboard up to release catches on the sides, then slide the keyboard towards the screen to slide tabs out of the slots at the bottom.

Step 9



- Disconnect the keyboard cable from the motherboard.

Step 10 — Front Panel



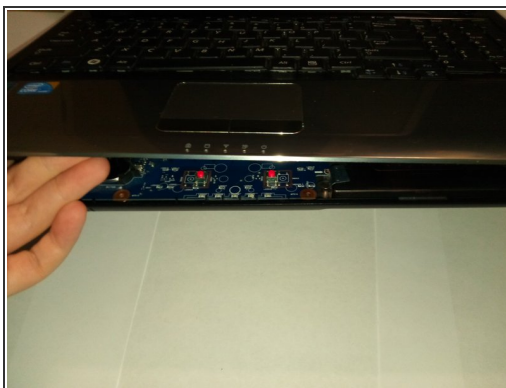
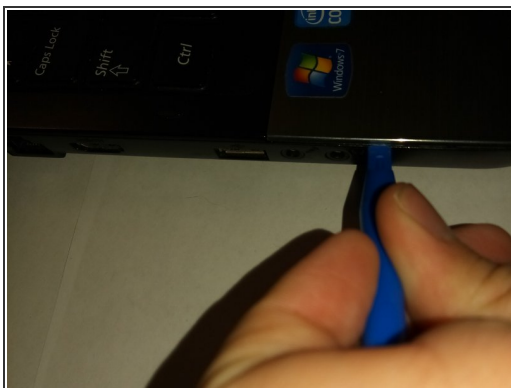
- Remove the two screws with a Phillips #00 screwdriver.

Step 11



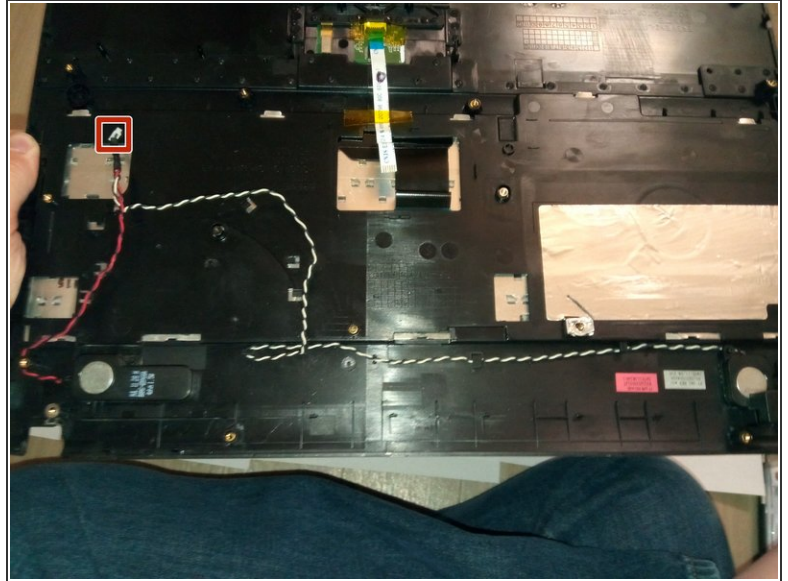
- Remove the highlighted screws with a Phillips #0 Screwdriver.

Step 12



- Pry the front panel away from the base with an Opening Tool.

Step 13



- Disconnect the speaker wire from the motherboard.

To reassemble your device, follow these instructions in reverse order.