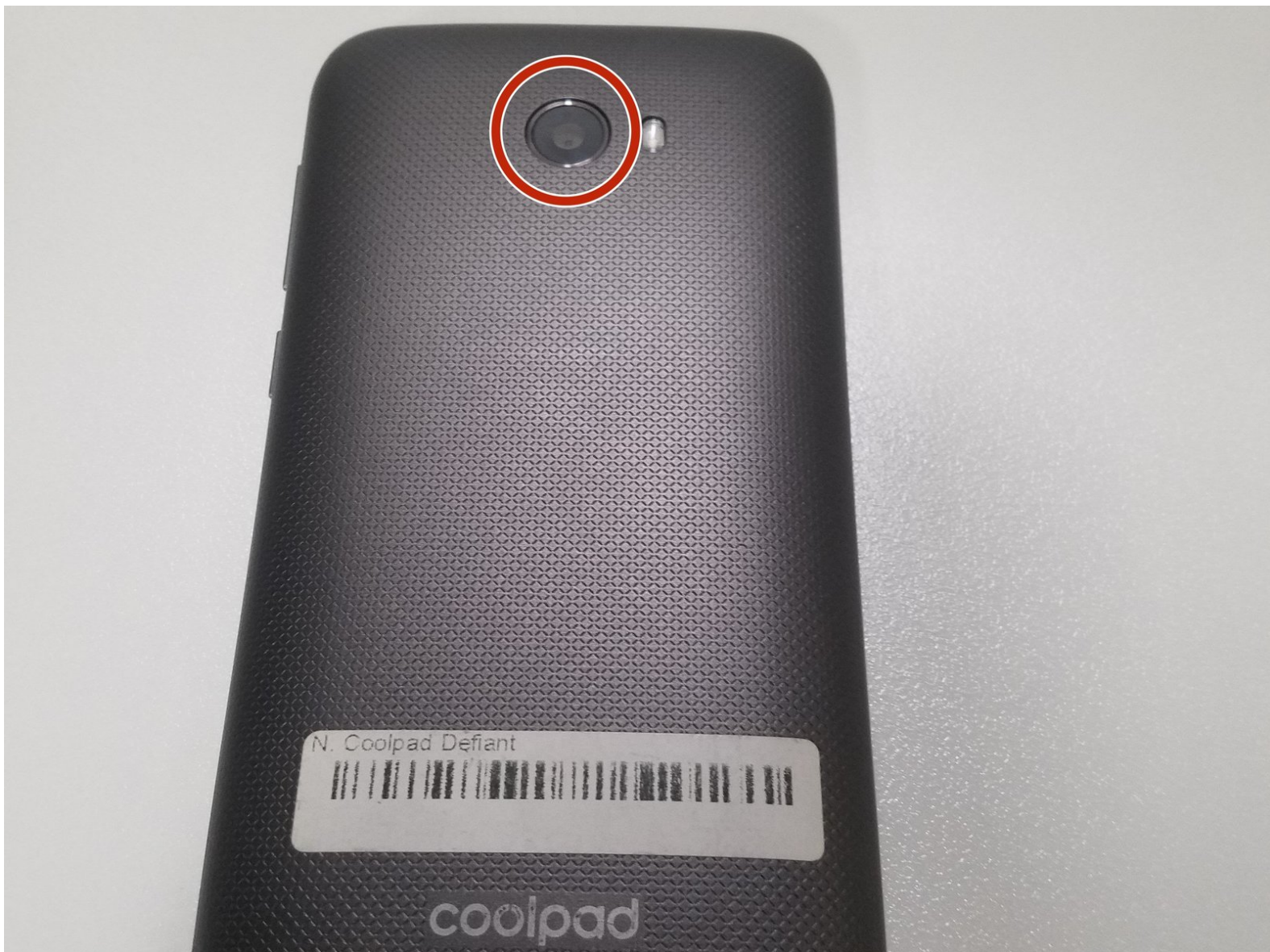




# Coolpad Defiant Rear Camera Replacement

This will assist you with how to remove and replace the rear facing camera in your Coolpad Defiant.

Written By: Johnny Boland



---

## INTRODUCTION

Is your phone not taking photos properly? Consider using this guide to replace the rear camera in your device.

---



### TOOLS:

- [iFixit Opening Tools](#) (1)
  - [Phillips #000 Screwdriver](#) (1)
-

## Step 1 — Back Cover



- Turn the phone with the back cover facing towards you.
  - Carefully remove the back cover by holding one corner of the case and carefully pulling it away from the phone.
- ⚠ The plastic case and inner components can break if not pulled carefully, so pull cautiously.

## Step 2



- Remove the back cover from your device.



## Step 3 — Battery



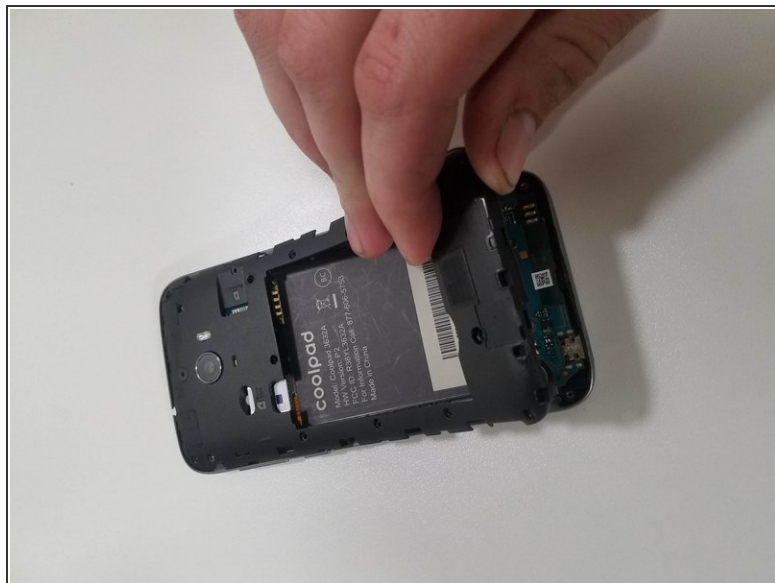
- Find the gap on the bottom of the battery.
  - With a tool or with your hands, pull the battery upward and set it aside safely.
- ★ *Remember to return the battery once you are done, safely placing it in the correct position or as how you first saw it.*
- ⚠ Be careful with old or damaged batteries and dispose of it appropriately

## Step 4 — Rear Camera



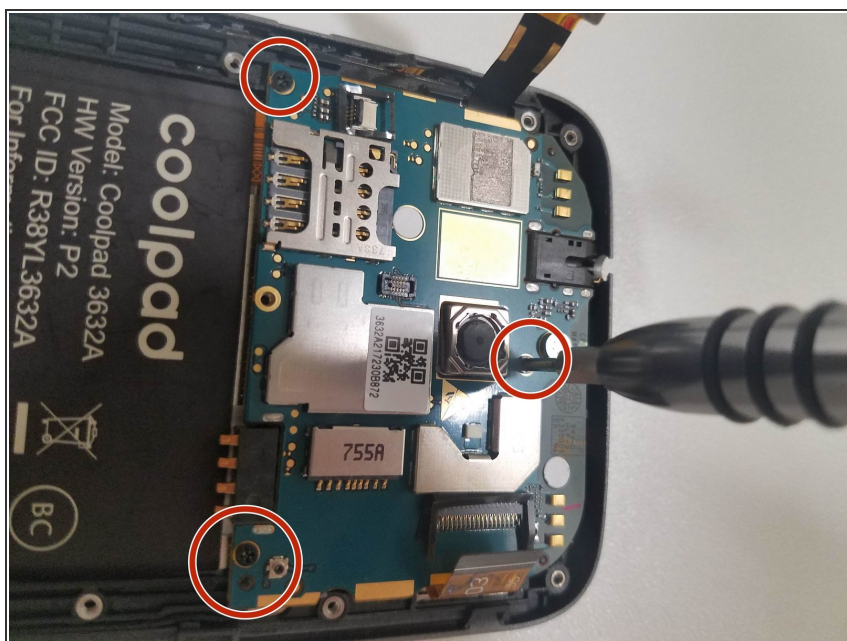
- Using a Phillips #000 screwdriver, remove the screws holding the rear mid-frame cover to the mid-frame assembly.

## Step 5



- Using either a plastic pry tool or your hands, pry the plastic cover away.

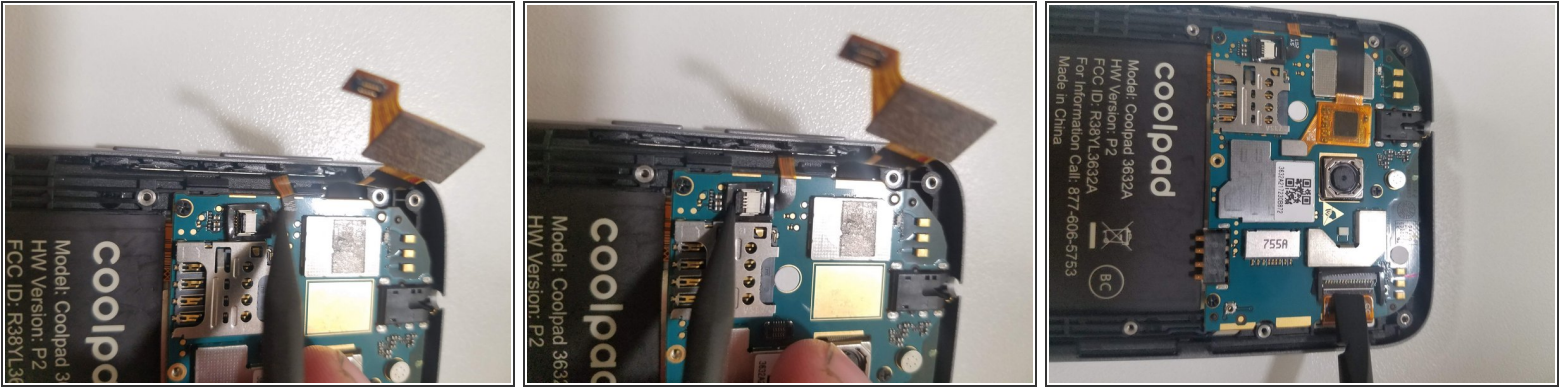
## Step 6



- Using the Phillips #000 screwdriver, remove the three screws holding the top logic board to the main frame.

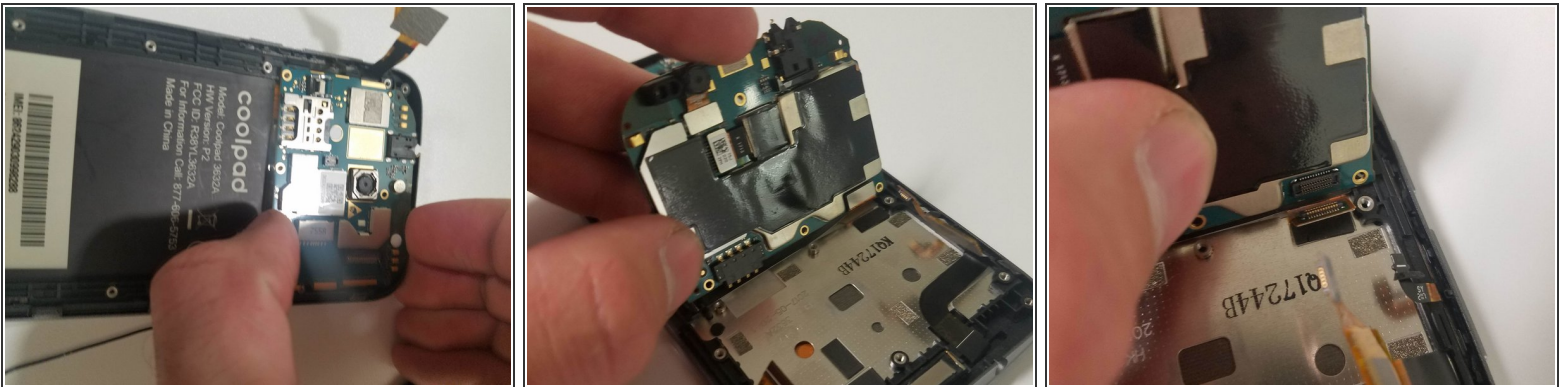


## Step 7



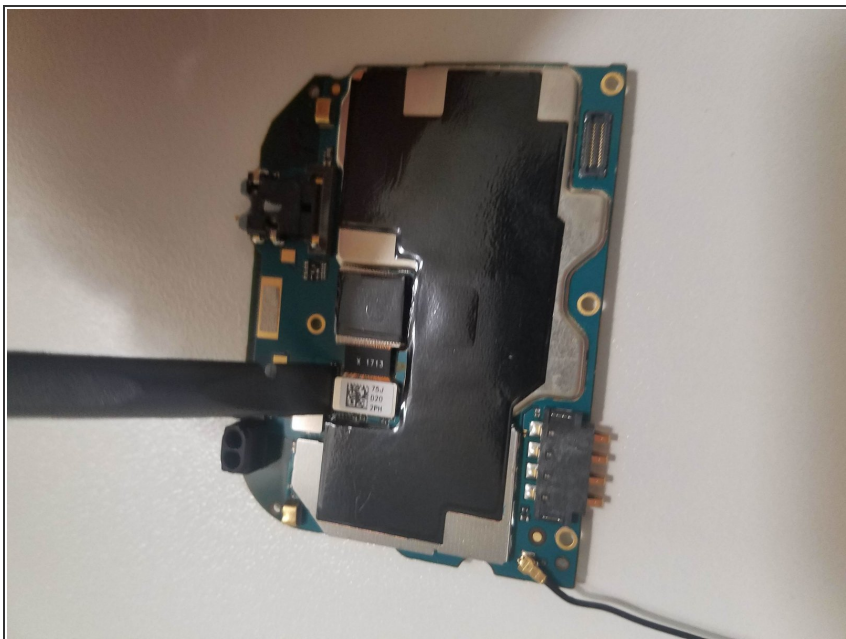
- Using the plastic pry tool, remove the flex cables for the screen, side buttons, and digitizer.
- Using the same tool, remove the antenna from the bottom logic board

## Step 8



- Carefully pull up on the upper logic board starting from the top and pull it straight up.
- Once the logic board is lifted perpendicular to the mid-frame, remove the flex cable on the bottom left side of the board.

## Step 9



- Flipping the logic board upside down, use the plastic pry tool to disconnect the flex cable connecting the camera to the logic board.
- Pull straight up on the camera and it will slide out of the logic board.

To reassemble your device, follow these instructions in reverse order.