



LG Sunrise Midframe Replacement

Use this guide to replace the midframe of your LG Sunrise.

Written By: Paxton Fox



INTRODUCTION

This guide will walk you through the steps of removing the midframe of your LG Sunrise.



TOOLS:

- [Metal Spudger](#) (1)
 - [Phillips #0 Screwdriver](#) (1)
-

Step 1 — Back cover



- Flip the phone over so the back side is facing you.

Step 2



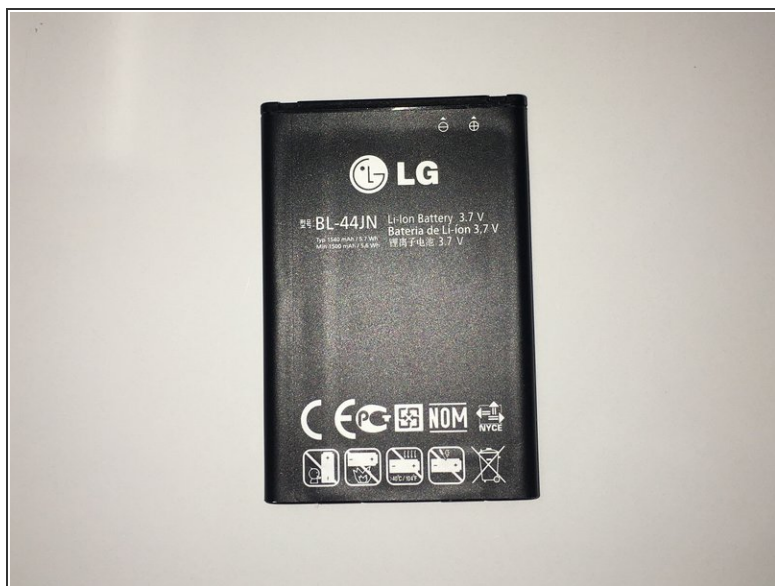
- Use a prying tool or a flat head screwdriver to pry the back cover from the device.

Step 3



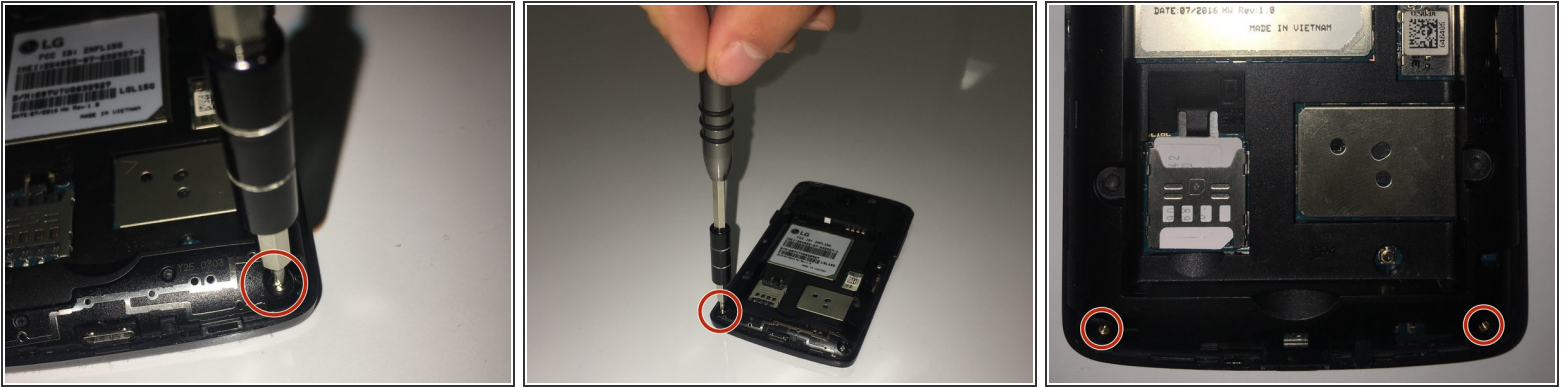
- Set back panel aside for later use or to replace.

Step 4 — Battery



- Use your finger to pull out battery from the bottom of the device.

Step 5 — Lower Back Plastic Piece



- You will be first removing the two lower screws. This is allow you to remove the lower plastic piece.

Step 6



- Once both of the screws are out you can easily pop off the bottom piece.

Step 7 — Midframe



- Once you have removed all 6 screws. Gently pry all sides of back plastic piece, starting at the bottom. Once you start on the bottom, it will become easier to pry.

Step 8



- Once you have pried off the back piece, the mother board should be exposed. Set this piece aside for replacement or reassembly.

To reassemble your device, follow these instructions in reverse order.