



# Toshiba TECRA R940 Keyboard Replacement

This is a guide to replacing a Toshiba TECRA R940-S9421 keyboard.

Written By: Jack Dutton



## INTRODUCTION

The keyboard requires more disassembly than what may seem obvious, Luckily, this laptops keyboard is one piece and easily replaceable.

---

### TOOLS:

- [Phillips #0 Screwdriver](#) (1)
  - [iFixit Opening Tools](#) (1)
  - [Spudger](#) (1)
-

## Step 1 — Battery



- Slide lock 1, located on the right side, to the unlocked position.

## Step 2



- While holding lock 2 (left side) in the unlocked position, pull out the battery pack.

☑ It is not necessary to hold open lock 2 for re-installation.

### Step 3 — Back Panel



- Unscrew the single screw on the RAM access panel using a Phillips #0 screwdriver.
- ⓘ The screw will not come apart from the panel.
- Use a plastic opening tool to pry off the access panel.



## Step 4



- Remove the 11 mm screw from the right side of the hard drive access panel using a Phillips #0 screwdriver.
- Remove the 3.5 mm screw from the left side of the access panel using a Phillips #0 screwdriver.
- Use a plastic opening tool to pry off the access panel from the bottom.

## Step 5



- Remove twelve 5.5 mm screws from the main back cover using a Phillips #0 screwdriver.
- Remove three 11 mm screws from main back cover and mini access panel using a Phillips #0 screwdriver.
- Remove two 9.5 mm screws from the main back cover using a Phillips #0 screwdriver.

## Step 6



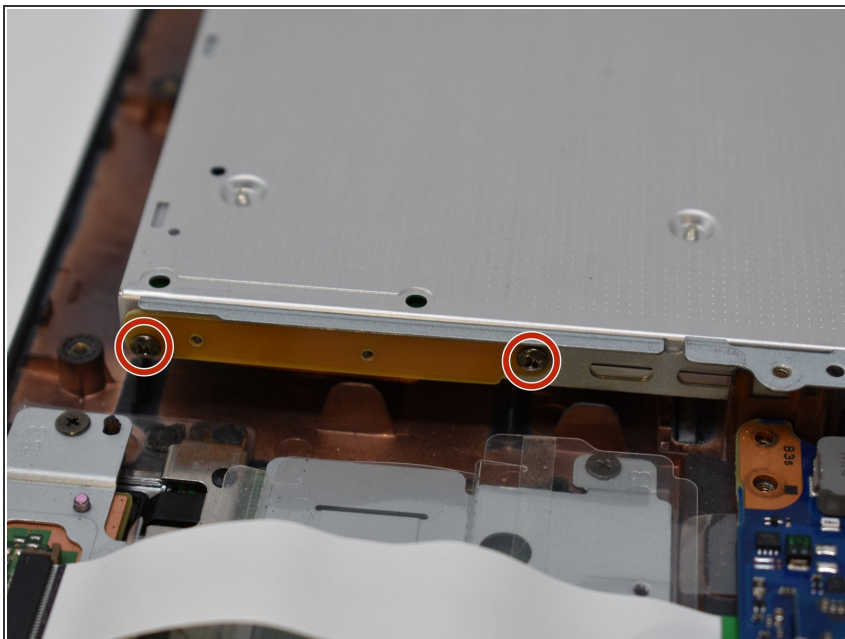
- Lift the hard drive out of the access panel.
- Disconnect the SATA connector from the hard drive by pulling straight out.

## Step 7



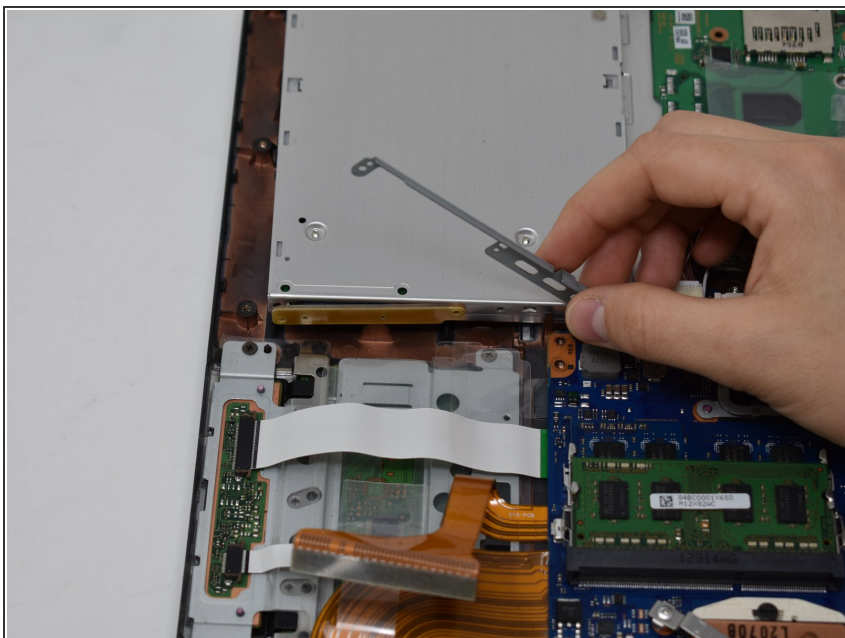
- Insert the plastic opening tool into the edge of the laptop and pry off the back cover.

## Step 8 — Optical Drive



- Remove two 2.5 mm screws from the side of the optical drive using a Phillips #0 screwdriver.

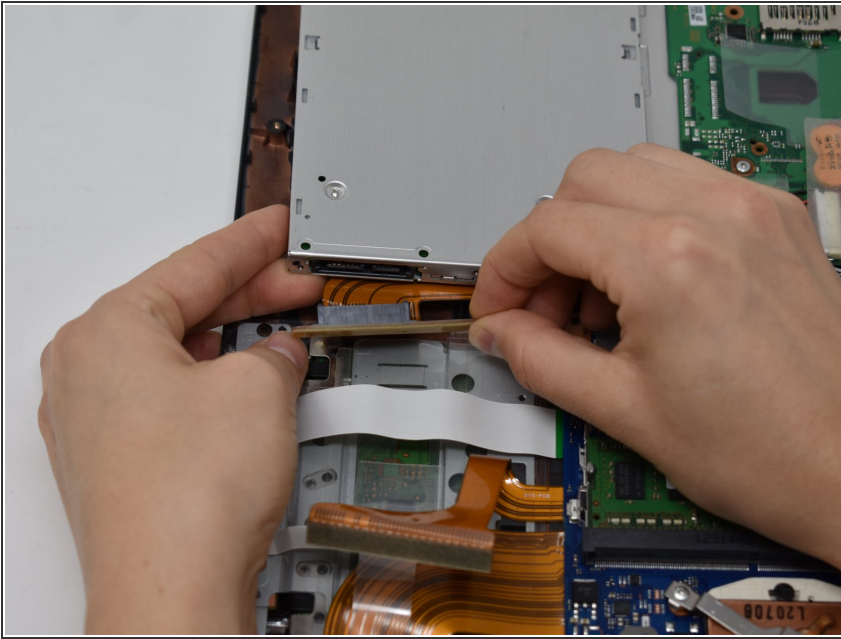
## Step 9



- Lift up the bracket covering the connector.
- ⓘ This bracket should not be fully removed from the optical drive.



## Step 10



- Gently remove the SATA connector from the port.

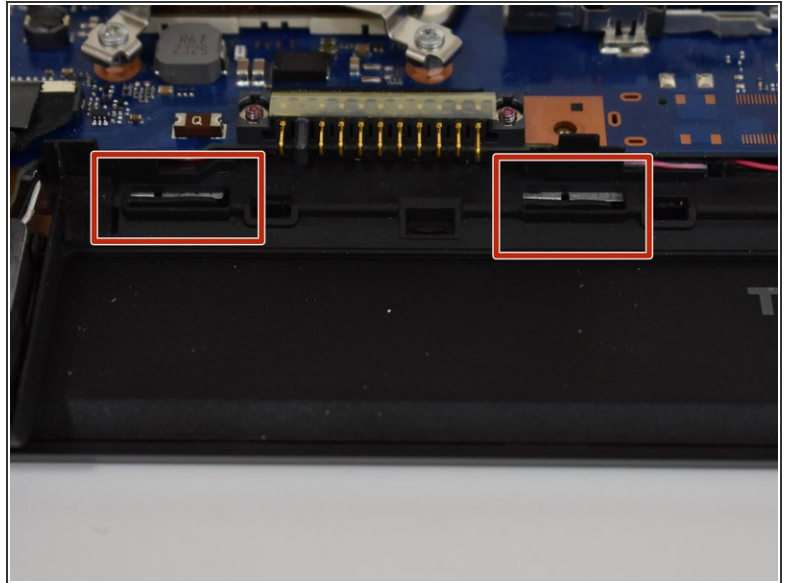
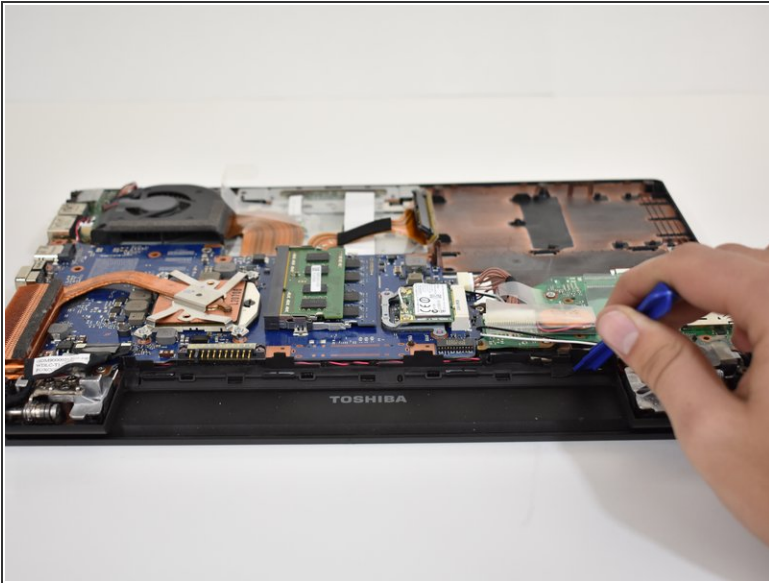
## Step 11



- Gently lift the optical drive out.



## Step 12 — Keyboard



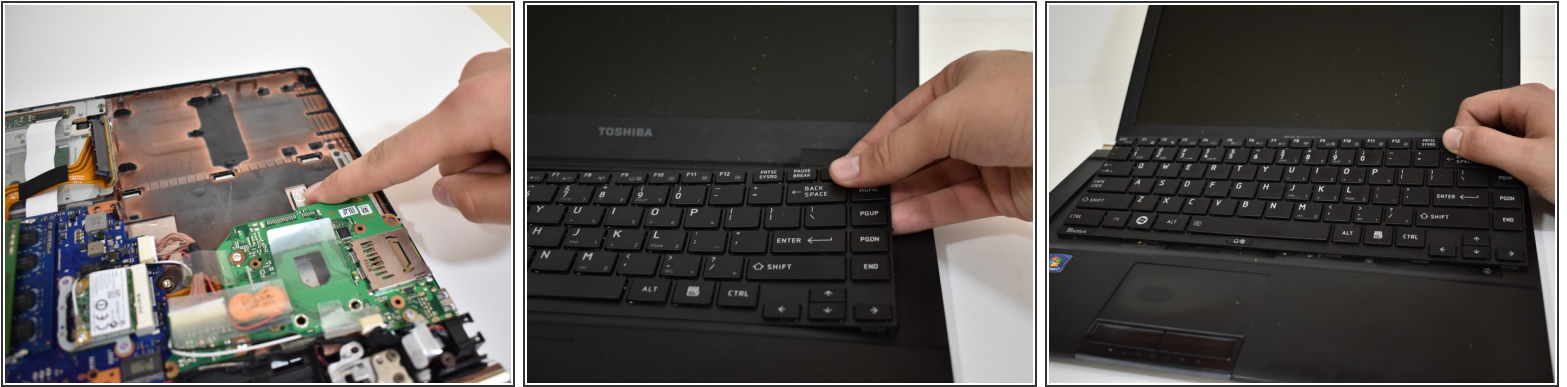
- Move the 4 small tabs, that are placed along the empty battery space, in the direction of where the battery pack would be. They should stay unhooked without having to hold them.

## Step 13



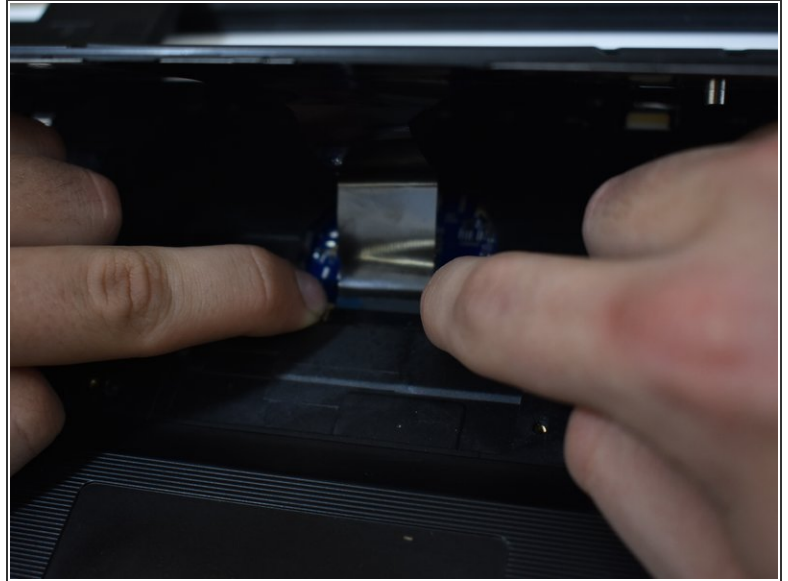
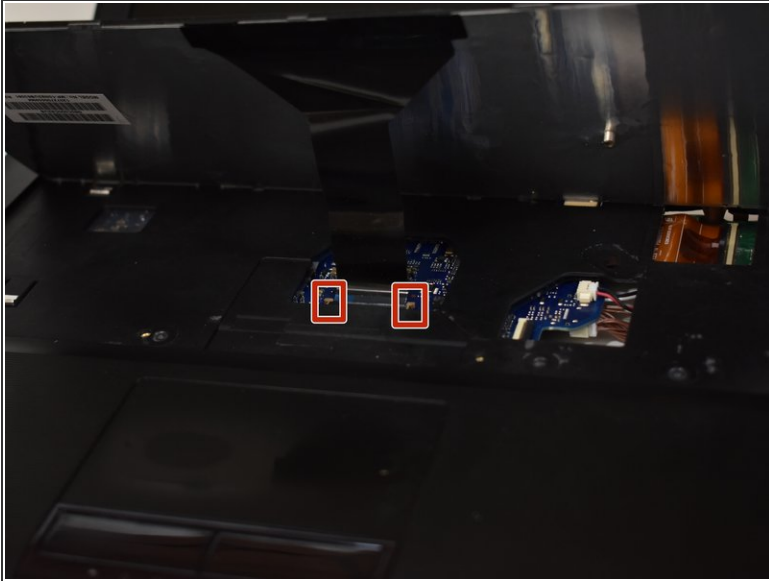
- Flip the computer over and remove the black strip at the top of the keyboard.
- ① If you are having difficulty removing the strip with your hand, try using a spudger to disconnect the strip.

## Step 14



- Turn the computer over again and press down on the metal notch. This will push the keyboard out of its place.
- Once you can get a firm grasp on the keyboard make small motions side to side and pull it out of place.
- ⓘ The top and right side of the keyboard should be out when you grab it, so to slide it out pull in the direction away from the lower left corner.
- ⚠ Make sure not to pull to hard as there is one last connection under the keyboard that could be severed.

## Step 15



- Push the two tan brackets towards the back of the computer, and safely pull out the connector ribbon.

To reassemble your device, follow these instructions in reverse order.