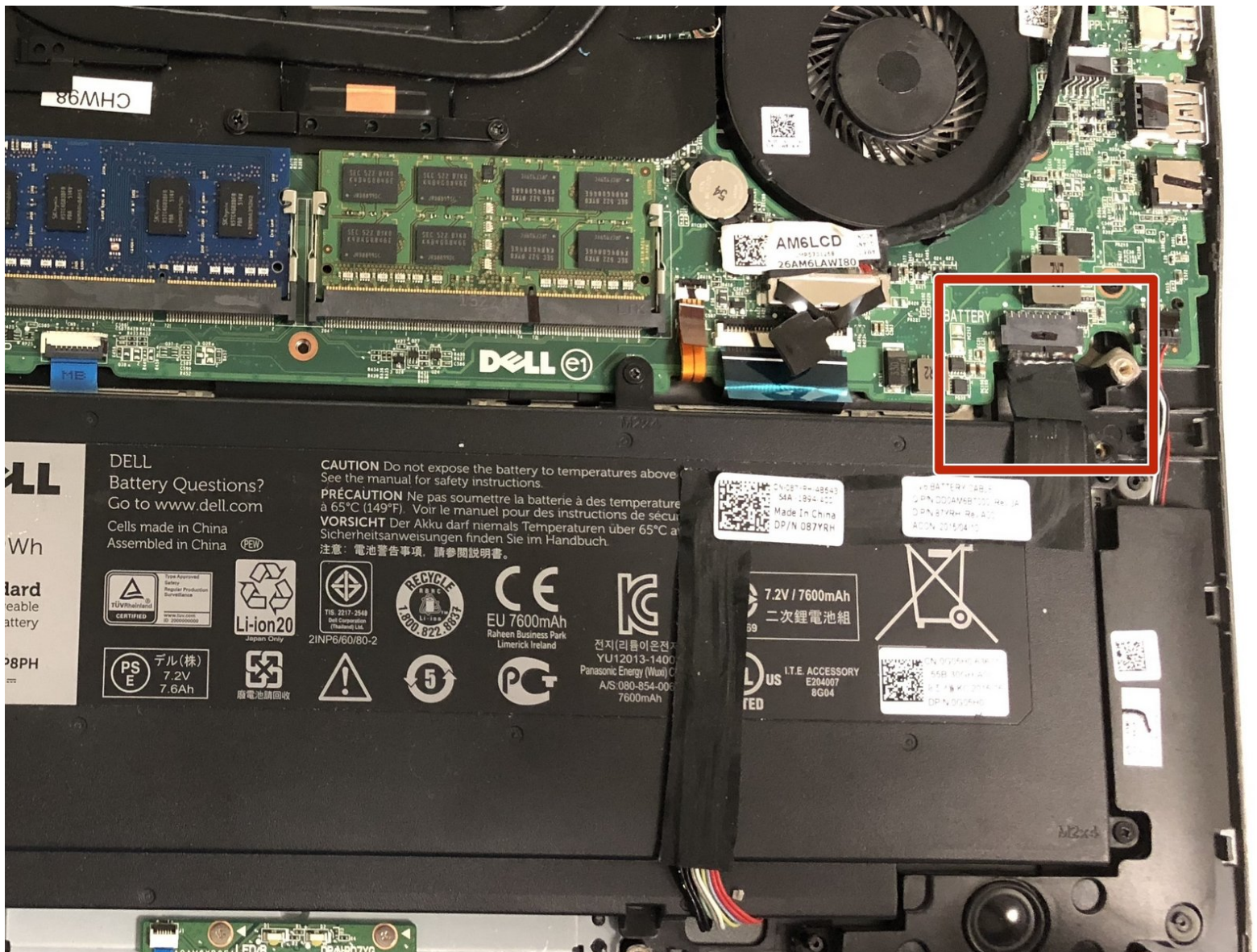




Dell Inspiron 15-7548 Battery Replacement

This guide will walk you through the process of...

Written By: Christopher Fisher



INTRODUCTION

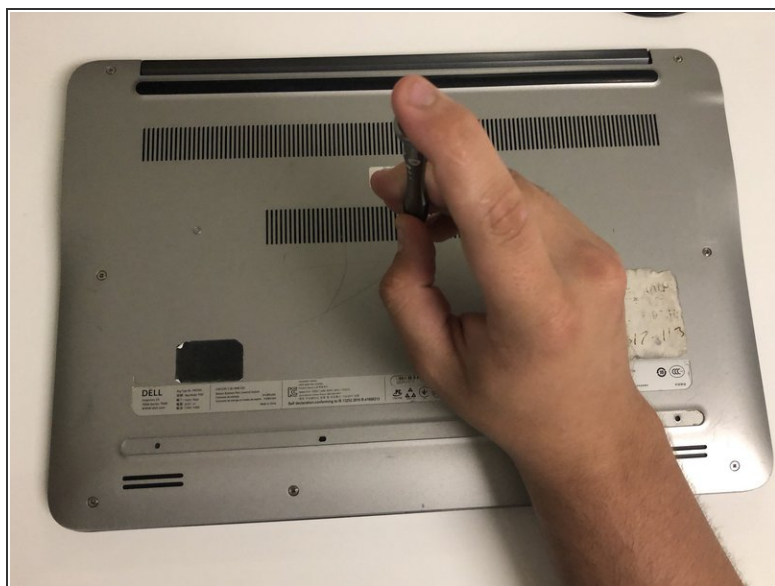
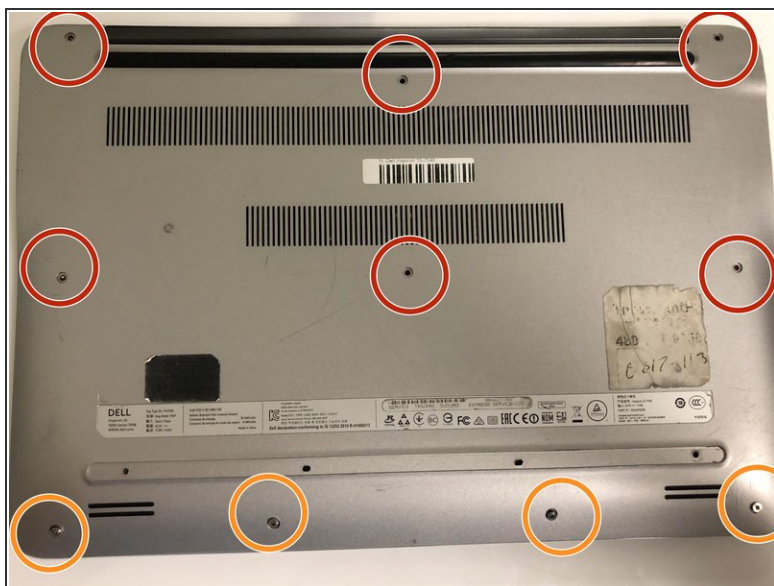
This guide will walk you through the process of replacing a dead or damaged battery in your Dell Inspiron 15-7548.



TOOLS:

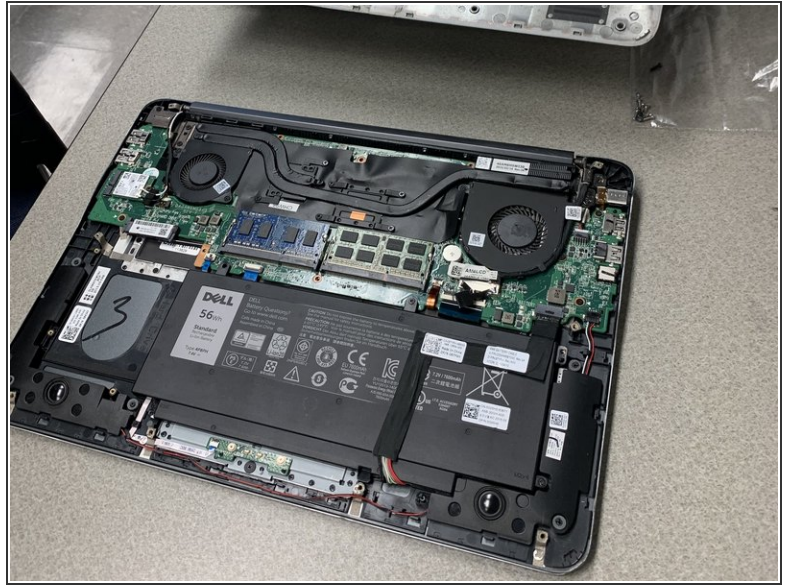
- [Spudger](#) (1)
 - [Phillips #1 Screwdriver](#) (1)
-

Step 1 — Back Panel



- Remove the six 6 mm screws from the back panel with a Phillips #1 screwdriver.
- Loosen the four captive screws at the bottom using a Phillips #1 screwdriver.
- ⓘ The four screws on the bottom are captive screws and cannot be removed.

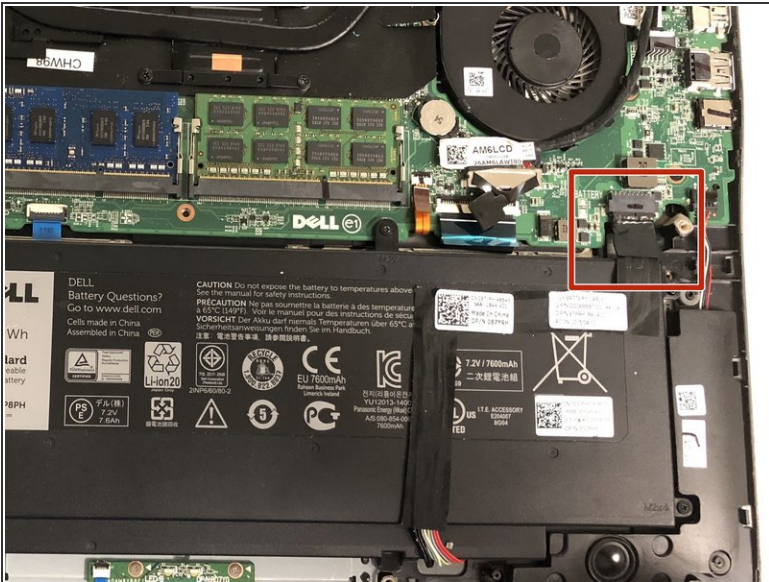
Step 2



- Pry out the back panel using the flat head side of the spudger.

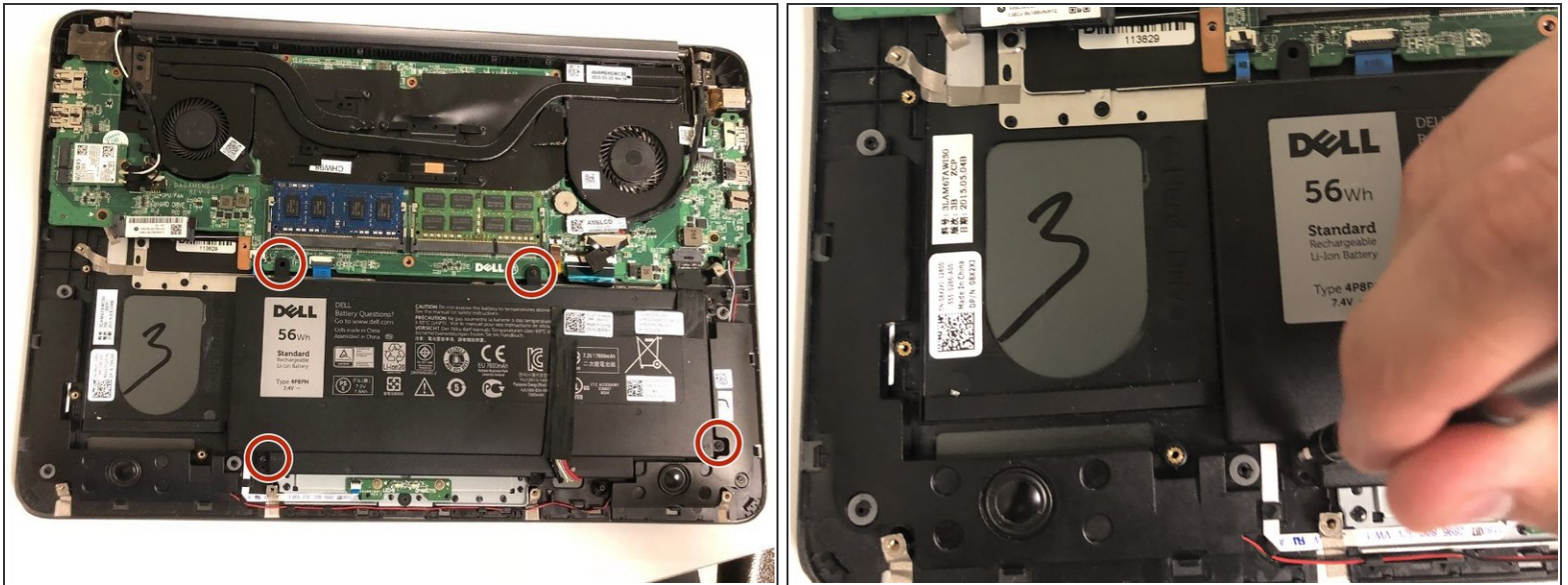
⚠ Do not insert the spudger more than half an inch when separating the bottom and right side of the back panel.

Step 3 — Battery



- Disconnect the battery from the motherboard by pulling the black tab attached to the cable.

Step 4



- Remove the four 2.5x6mm screws using a Phillips #1 screwdriver.

To reassemble your device, follow these instructions in reverse order.