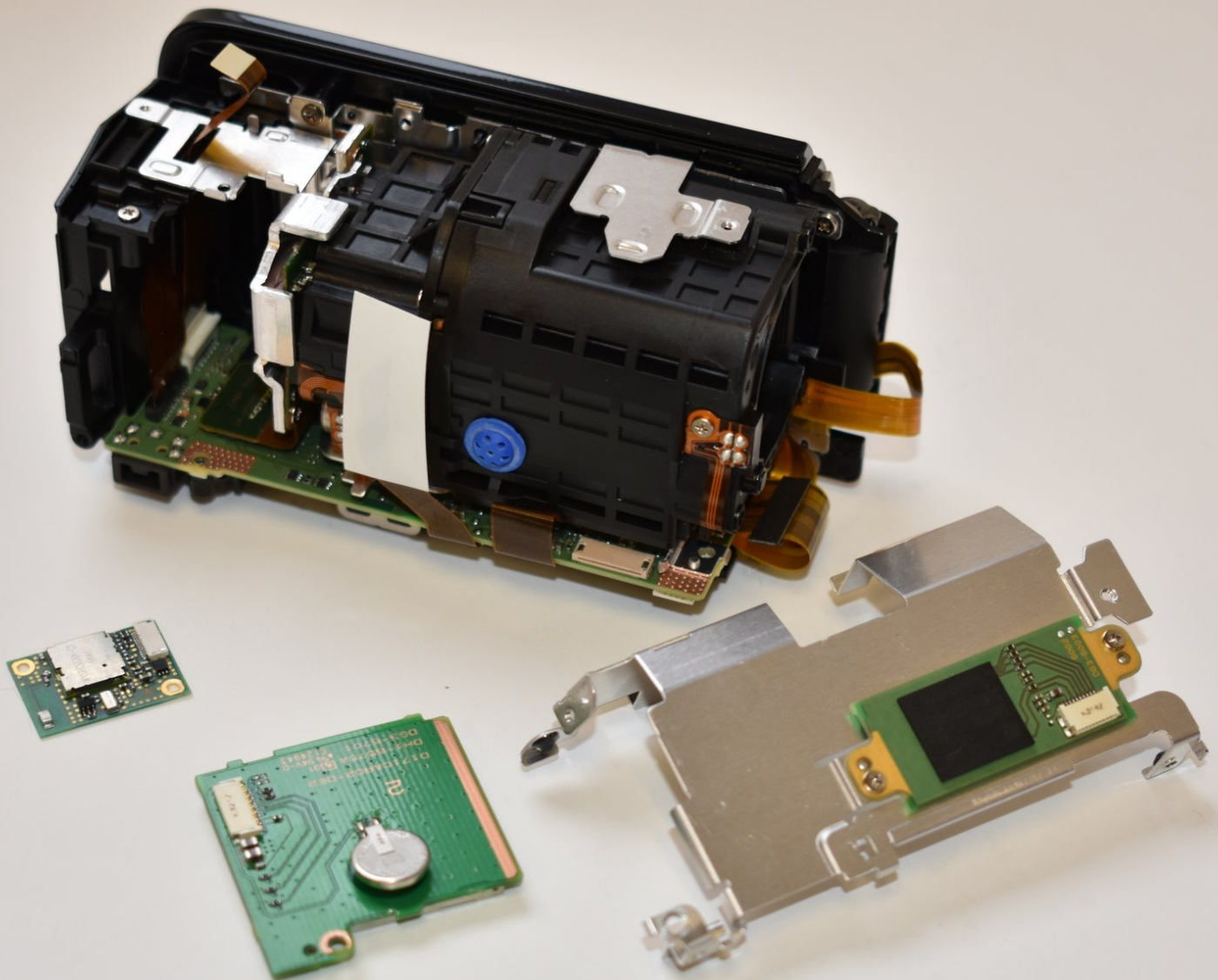




Canon Vixia HF R62 Internal Battery and SD Card Reader Replacement

Disassemble the inner shell of your Canon Vixia HF R62 Camcorder to access and replace the internal battery and SD card reader

Written By: Dom Wolf-Jarvis



INTRODUCTION

This guide will help replace the internal battery and SD card reader, and opens up the central capturing unit to be disassembled



TOOLS:

- [Phillips #000 Screwdriver](#) (1)
 - [Tweezers](#) (1)
 - [Spudger](#) (1)
-

Step 1 — Outer Shell



- Remove the strap by undoing the Velcro and pulling it through the thread points.
- Remove the external battery pack by pressing down on the slide release and sliding it out.

Step 2



- Remove the three 5mm Phillips #000 screws on the bottom of the device.

Step 3



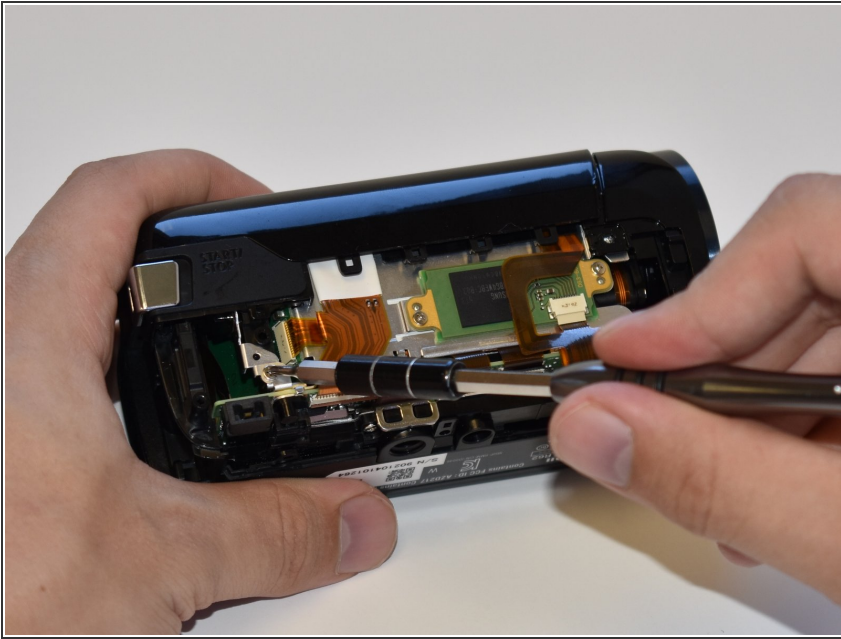
- On the side of the device, remove the following Phillips #000 screws:
 - One 3mm screw
 - One 5mm screw

Step 4



- Remove the panel opposite the display by pulling up perpendicular to the side.

Step 5



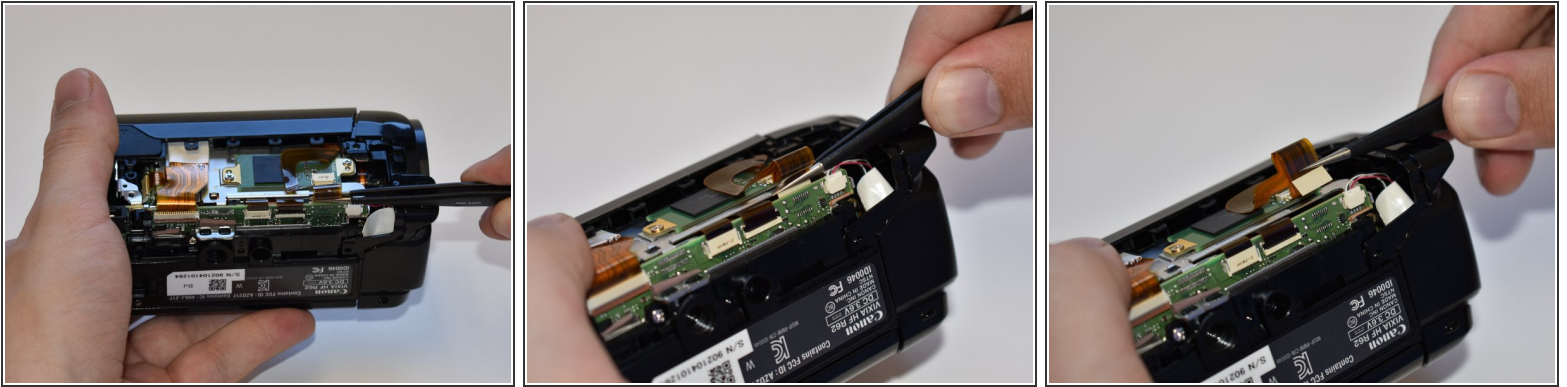
- Remove the 4mm Phillips #000 screw that was exposed after taking off the side panel.

Step 6



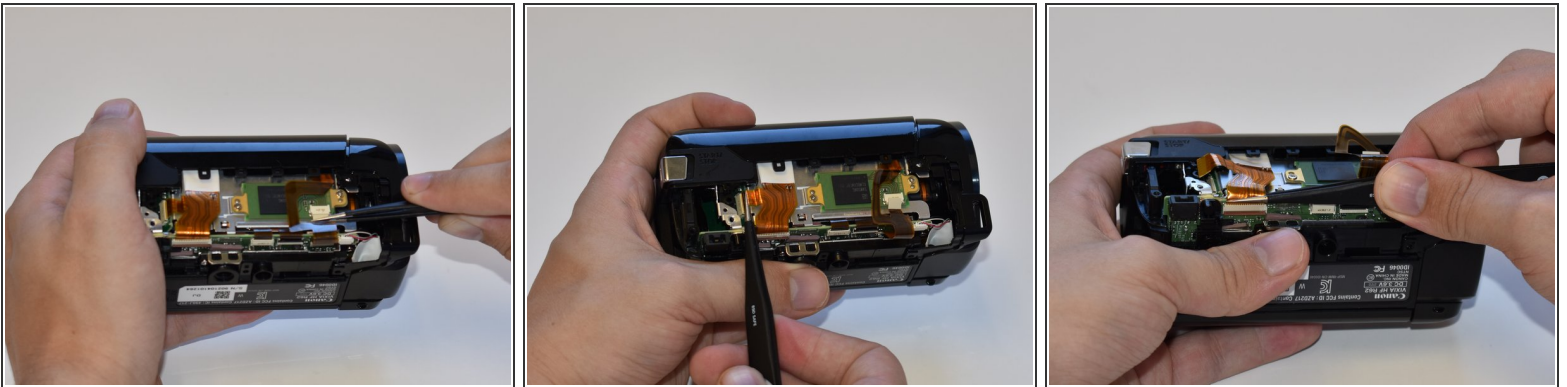
- Remove the three 4mm Phillips #000 screws shown.
- ⓘ There will be foam covers protecting some or all of these screws. These will need to be removed before you will be able to unscrew them.

Step 7



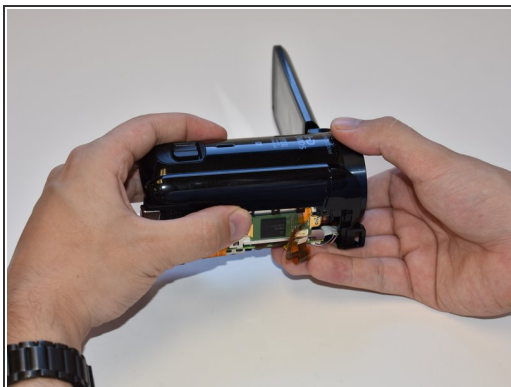
- Using tweezers, disconnect this ribbon cable by pulling straight out.

Step 8



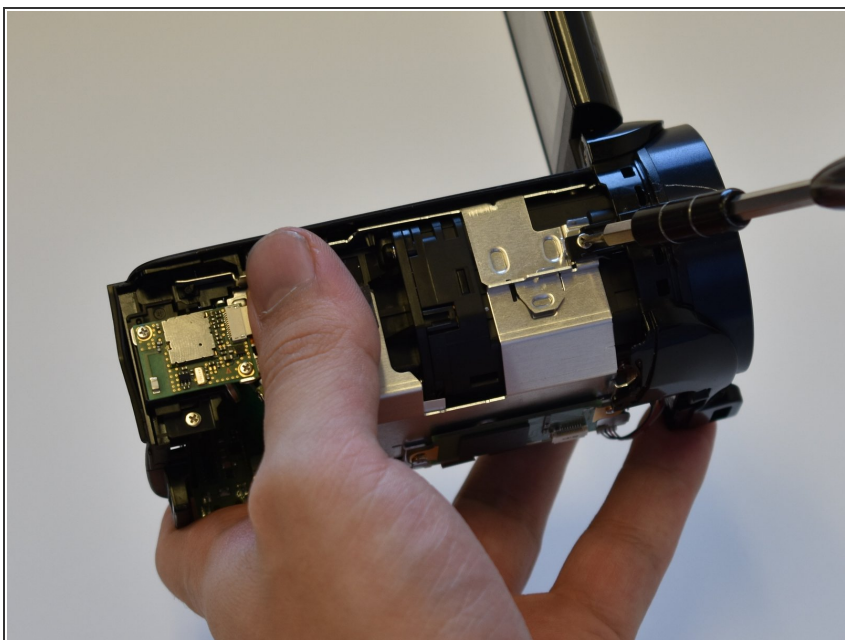
- Repeat step seven (7) for the remaining three wires shown.

Step 9



- Grasp the top of the camera and pull straight up to remove the top panel.

Step 10 — Lens



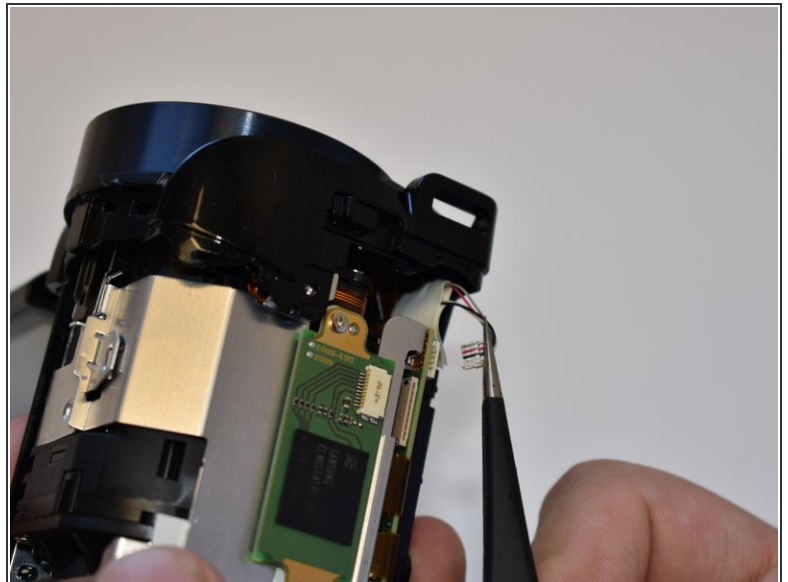
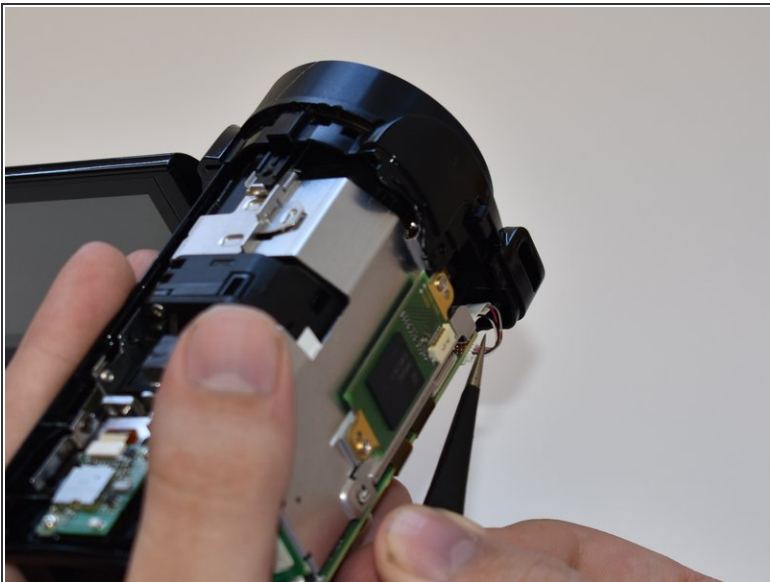
- Remove the 5mm Phillips #000 screw on top of the inner case.

Step 11



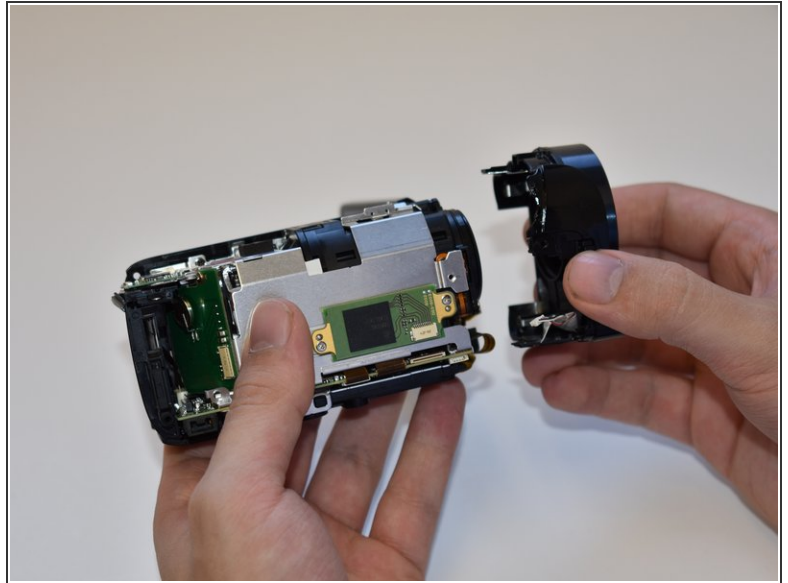
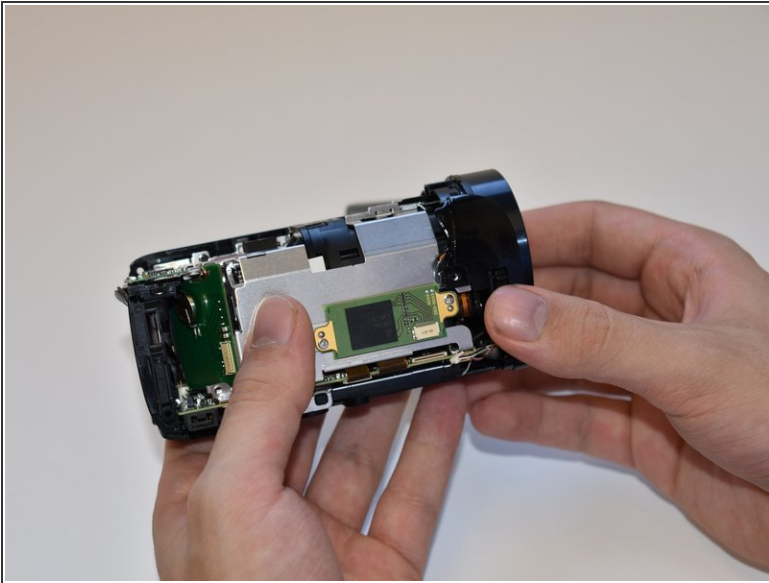
- Remove the two 5mm Phillips #000 screws near the display panel.

Step 12



- Disconnect the small bundled cable connector on the side of the lens cover by pulling it straight out.

Step 13



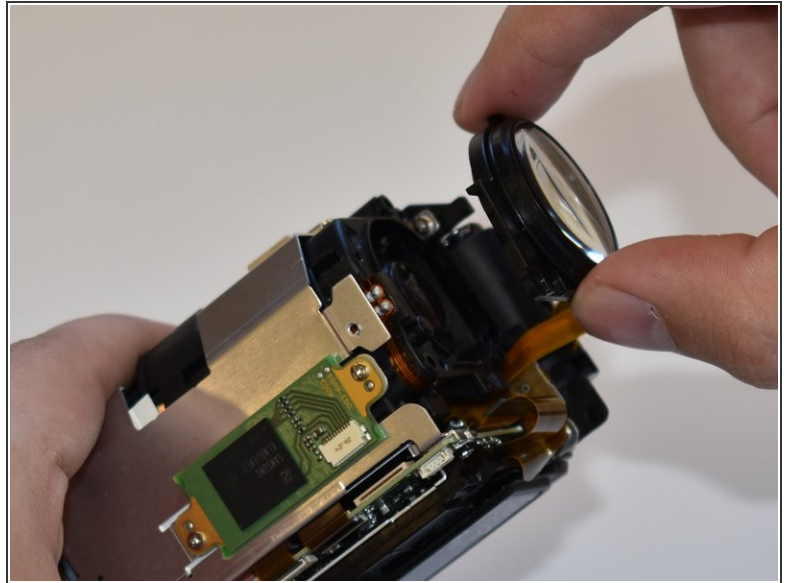
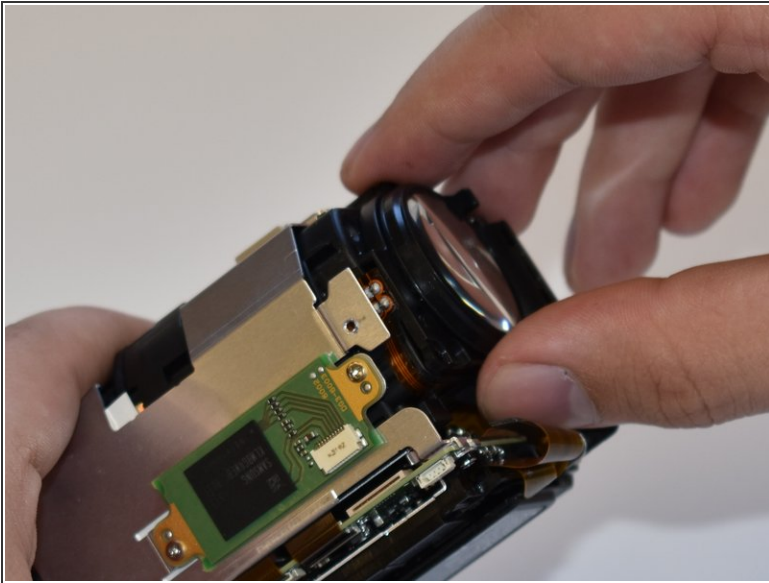
- Remove the lens cover by pulling straight away from the body.

Step 14



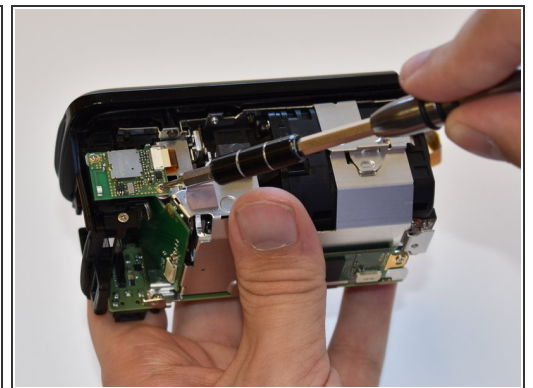
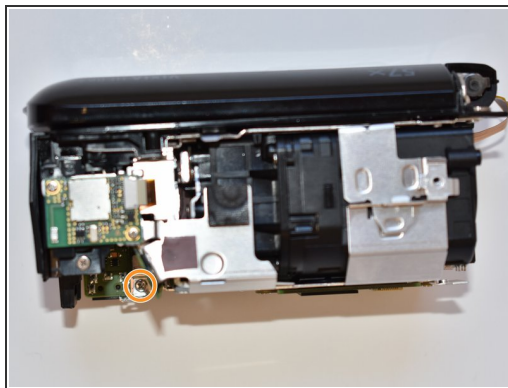
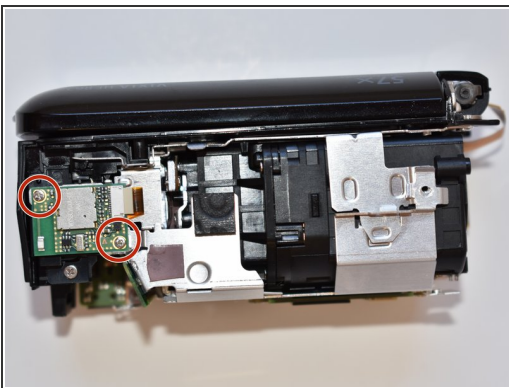
- Remove the three 6mm Phillips #000 screws shown.

Step 15



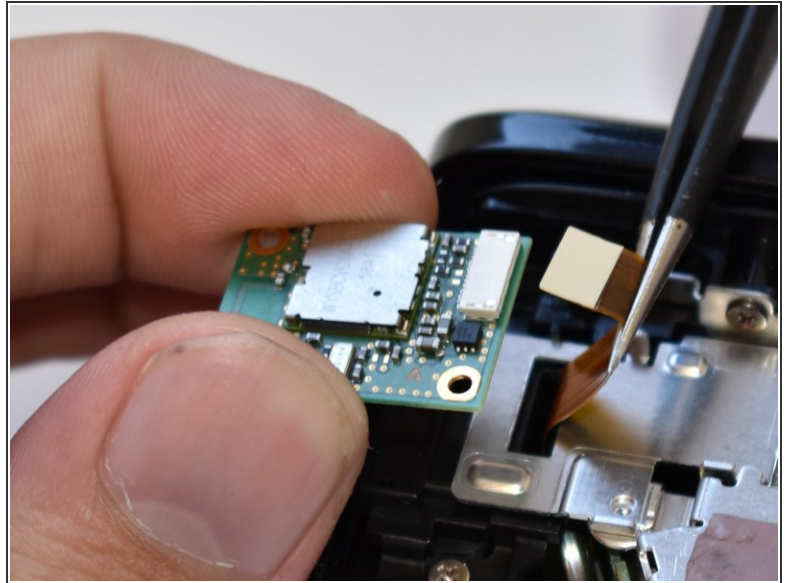
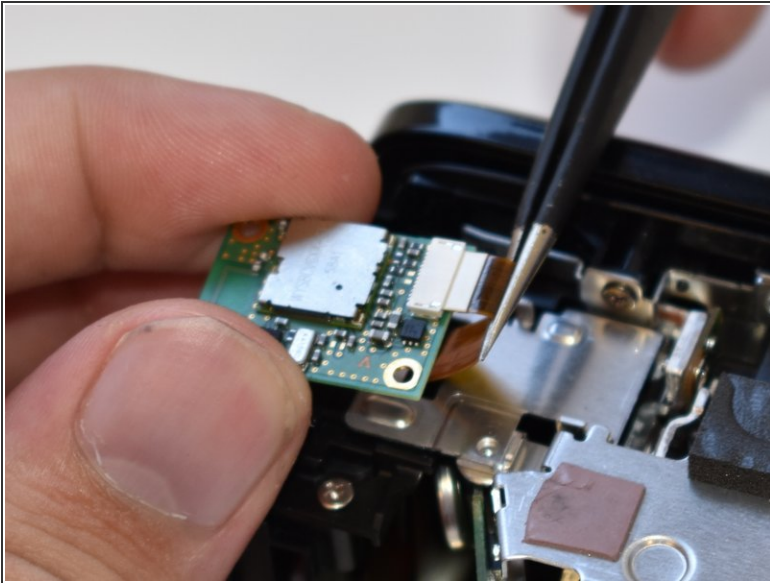
- Remove the lens by pulling straight away from the main body.
- ⓘ Be aware of the small rubber gasket around the lens as it may come loose.

Step 16 — Internal Battery and SD Card Reader



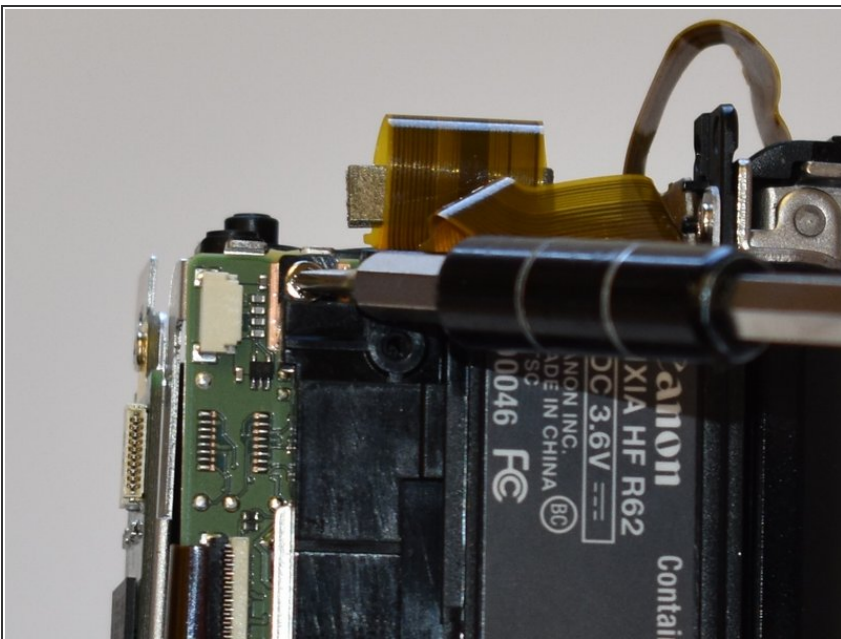
- Remove the two 3mm Phillips #000 screws.
- Remove the 4mm Phillips #000 screw.

Step 17



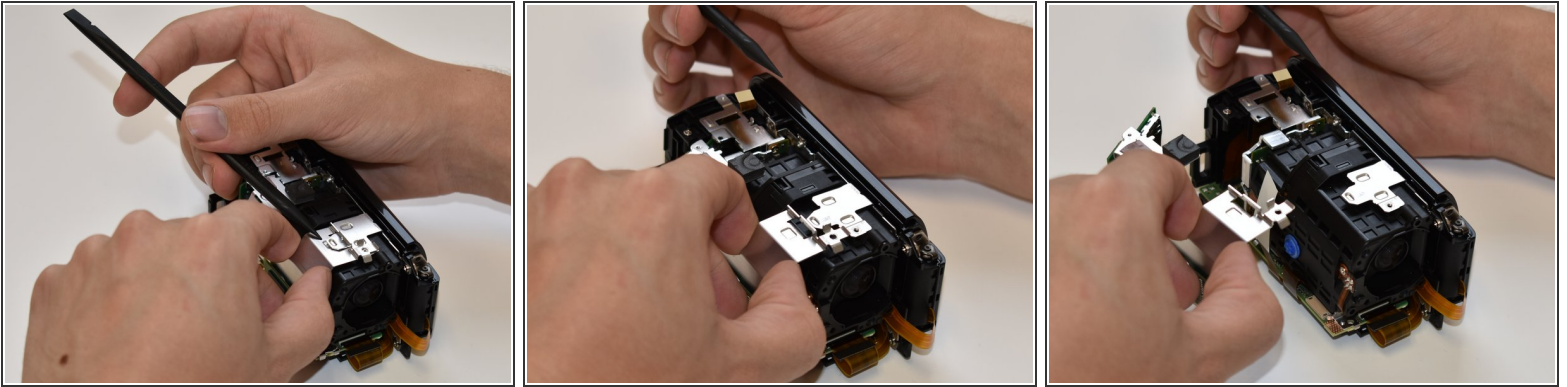
- Disconnect the ribbon cable shown.

Step 18



- Remove the 4mm Phillips #000 screw at the bottom of the camera.

Step 19



- Place the spudger under the tab shown.
- While prying the tab up with the spudger, pull the case away.

To reassemble your device, follow these instructions in reverse order.