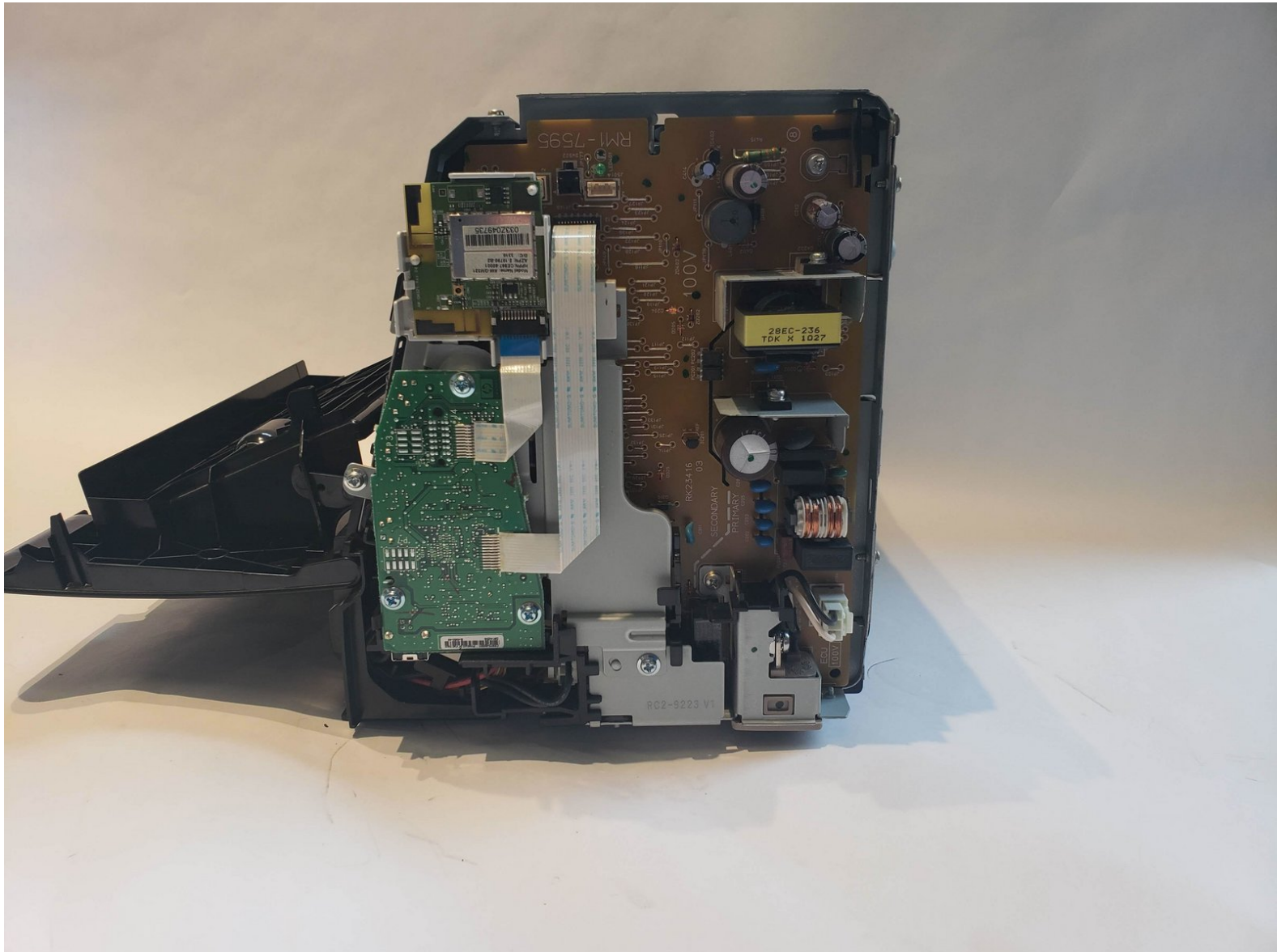




HP LaserJet P1102w Motherboard Replacement

How to remove the motherboard in a HP LaserJet P1102w.

Written By: Jerome Etten



INTRODUCTION

These steps will show how to replace the motherboard from the printer. This guide may be used if the printer is experiencing systematic errors, was short circuited, or has issues connecting to devices.



TOOLS:

- [Spudger](#) (1)
 - [Phillips #1 Screwdriver](#) (1)
 - [iFixit Opening Tools](#) (1)
 - [Tweezers](#) (1)
-

Step 1 — Left Side Panel



- Flip printer on it's back. Using the plastic spudger, pry off front panel. There will be two main points to focus as shown.

⚠ Pry carefully to not break any plastic.

Step 2



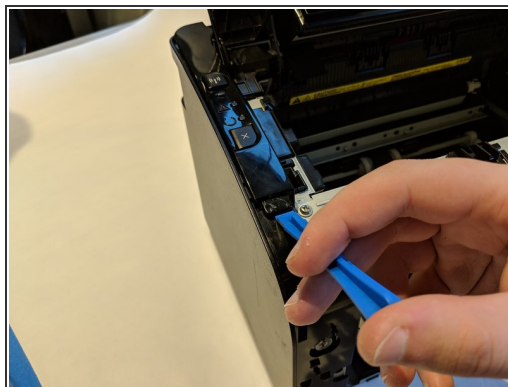
- Now that the pry points are free lift up the front panel.

Step 3



- Unscrew the #1 Phillips screw 6mm on the back of the printer.

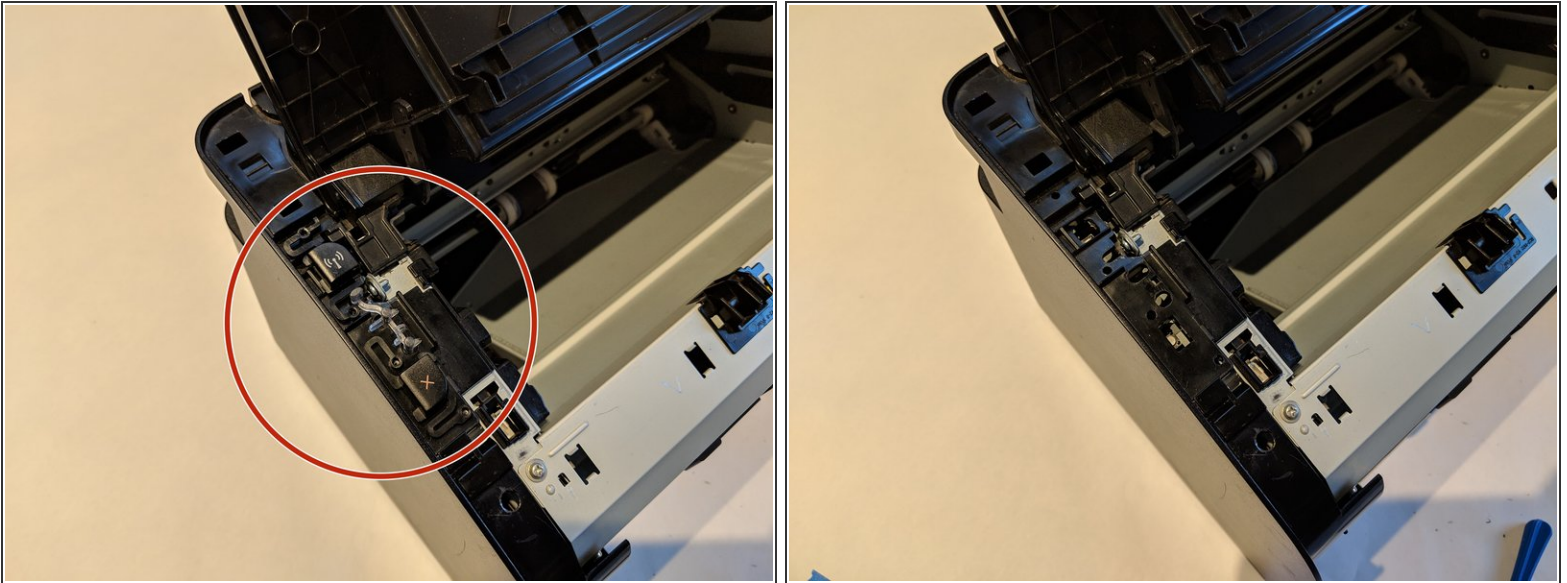
Step 4



- Using the plastic spudger, remove the button housing from the top left of printer.

⚠ Pry carefully to not break any plastic.

Step 5



- Once the housing is removed, remove the three buttons.

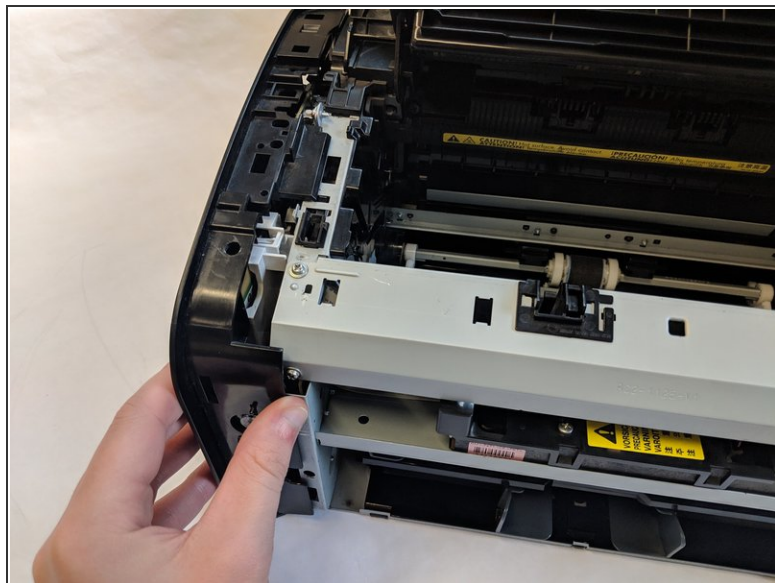
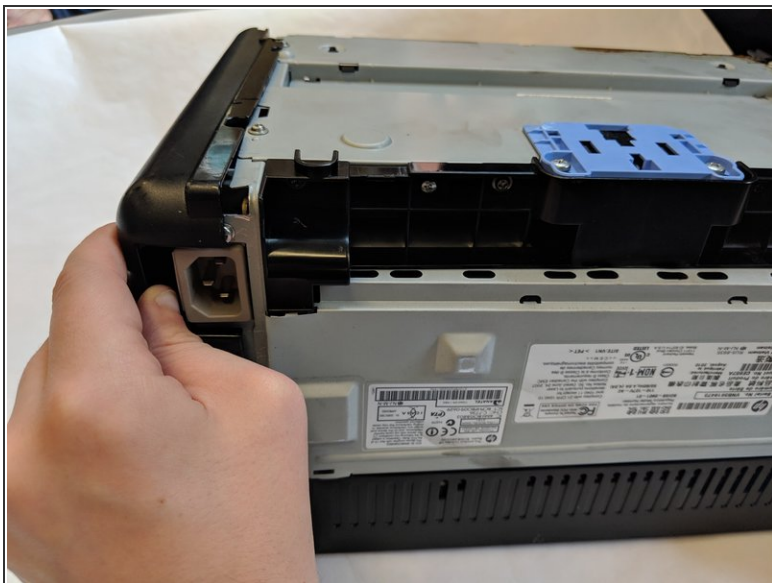
Step 6



- Use the plastic spudger to remove the side panel. There are three main prying points as shown.

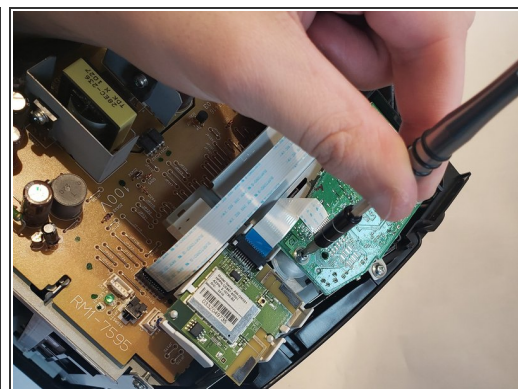
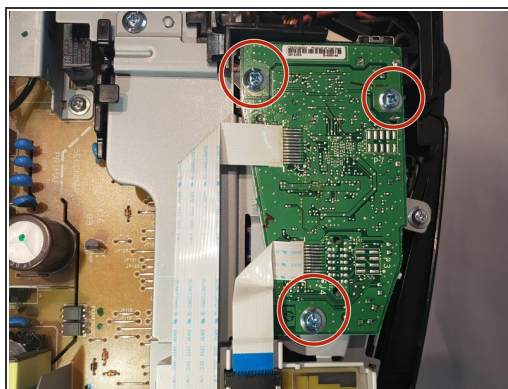
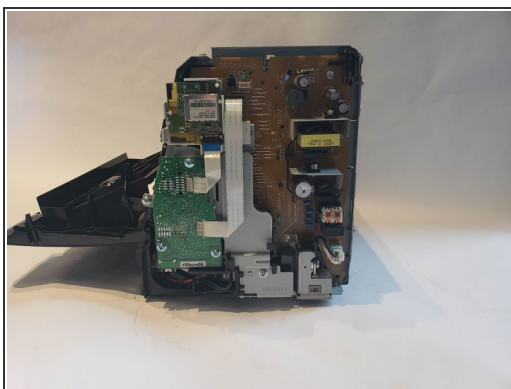
⚠ Pry carefully to not break any plastic.

Step 7



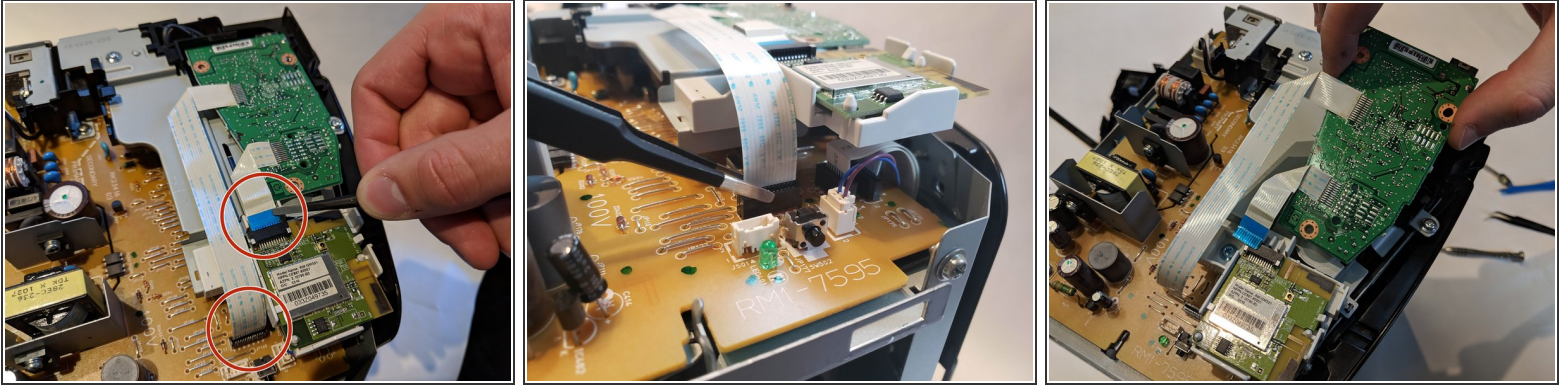
- With all pry points free, remove the side panel.

Step 8 — Motherboard



- Remove three #1 Phillips 6mm screws with the #1 Phillips screwdriver.

Step 9



- Using a pair of blunt nose tweezers, disconnect both ribbon wires.
- With both ribbon wires removed we can lift the motherboard out of its housing.
- ⓘ There is a little black notch holding the motherboard down by the thumb in the final picture.
- ⚠ Be careful pulling, as ribbon wires are very fragile.

To reassemble your device, follow these instructions in reverse order.