



# JBL Charge 3 Port Bay Replacement

This guide will teach you how to replace the port bay of the JBL Charge 3.

Written By: Jack Ng



---

## INTRODUCTION

If any of the three ports on your JBL Charge 3 (AUX, USB, charging) are not functioning, they may need replacing. If you wish to replace only one of the ports rather than the whole assembly, you will need to know how to solder. Follow [iFixit's Soldering Guide](#) to learn more.

---

### TOOLS:

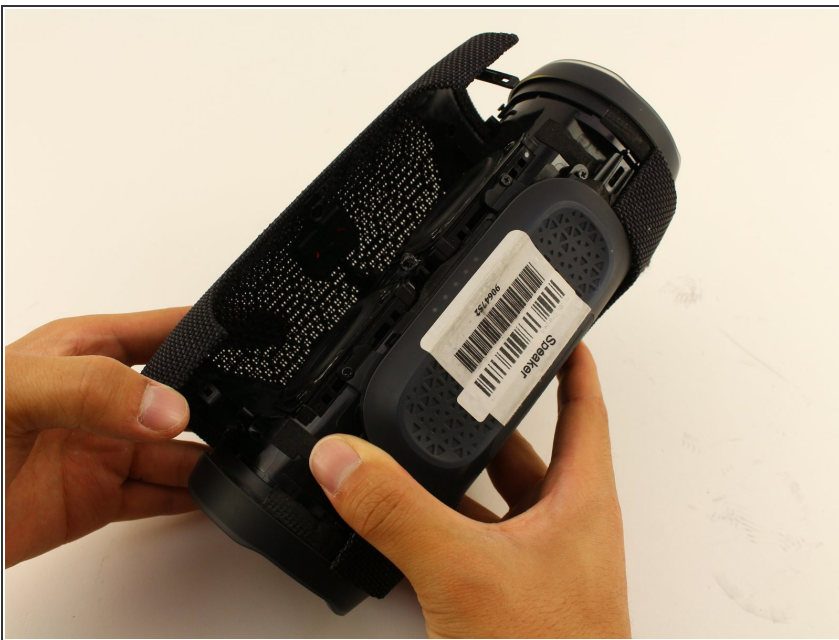
- [iFixit Opening Tools](#) (2)
  - [Phillips #1 Screwdriver](#) (1)
  - [Soldering Iron](#) (1)
-

## Step 1 — Front Cover



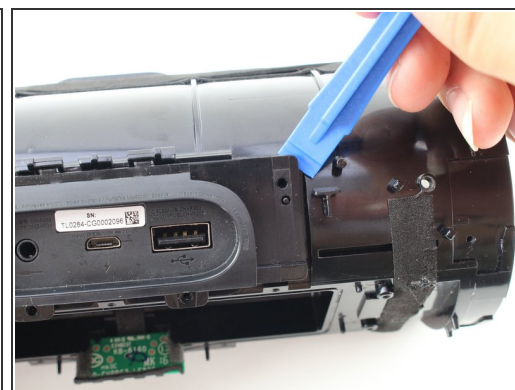
- Turn your speaker upside down and insert the plastic opening tool vertically into the slit in the front cover.
- Slowly pull the plastic opening tool outward to remove the four clips holding the covering in place.
- Repeat this process for all four edges of the front cover.

## Step 2



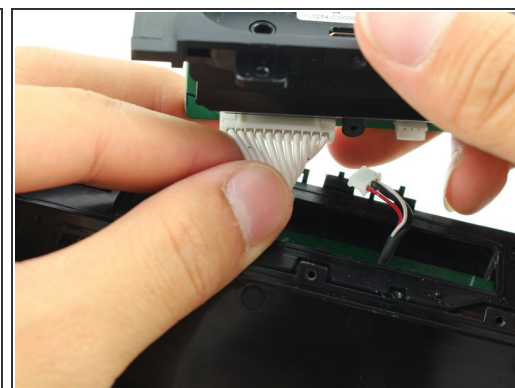
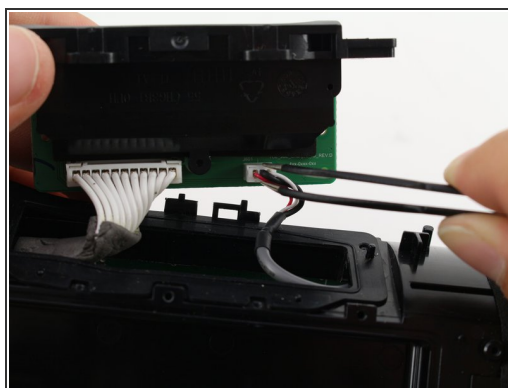
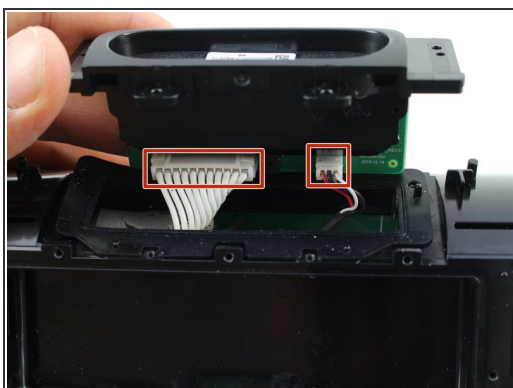
- Pull apart your cover gently from both sides and remove it from the speaker housing.
- ✦ The inside of the front cover has holes that must match with their corresponding pins on the speaker housing for proper reassembly.
- ⚠ Removing the Front Cover does not affect the waterproof seals of the device. However, removing any further disassembly of your speaker will require removing waterproof seals and gaskets. Your device may no longer be waterproof after these have been altered.

## Step 3 — Port Bay



- Take out the four 8mm Phillips #1 screws out of the port bay cover.
- Wedge your plastic opening tool around the port bay to remove it.

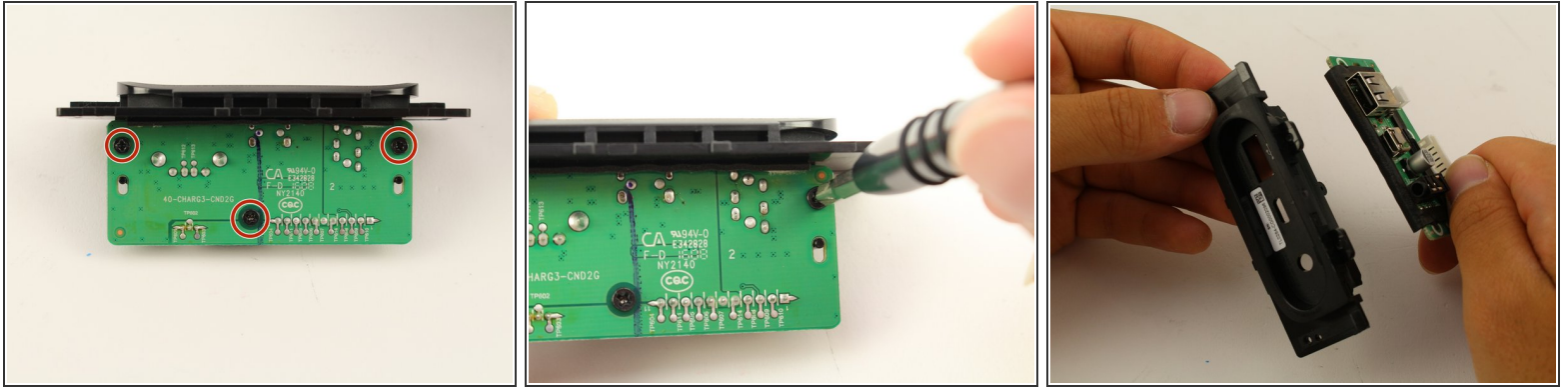
## Step 4



- Disconnect the two bundled cable connector from the port bay.

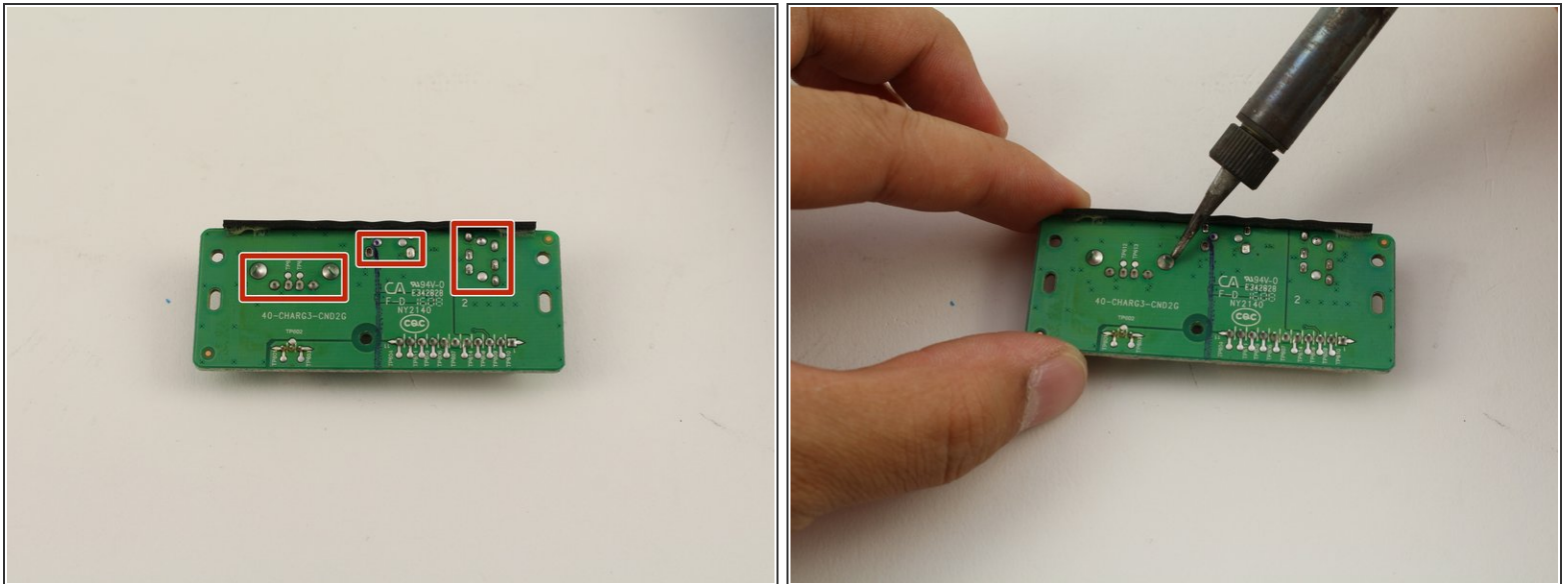


## Step 5



- Remove the three 8mm Phillips #1 screws from the port bay circuit board.
- Pull the port bay cover off of the circuit board.

## Step 6



- Desolder the USB, MicroUSB, or AUX port off of the circuit board.

To reassemble your device, follow these instructions in reverse order.