



HP Officejet Pro 8625 CMOS Battery Replacement

Replace your CMOS battery if HP Officejet Pro 8625 is shutting off randomly or losing data frequently.

Written By: Cam Engle



INTRODUCTION

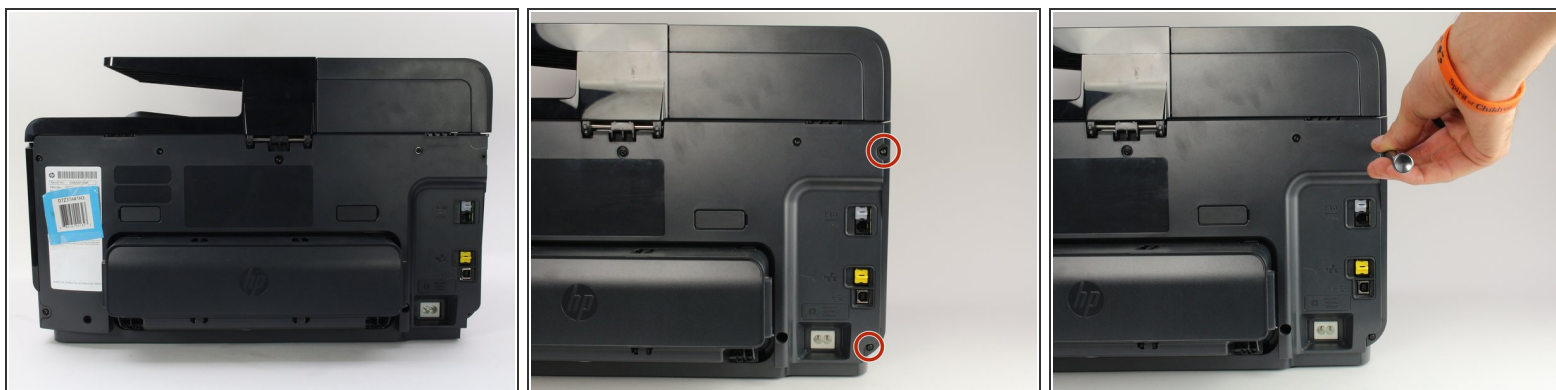
The CMOS battery is an on-board memory storage battery. If you're HP Officejet Pro 8625 is losing data frequently or shutting off randomly, you may need to replace the CMOS battery. Removing the CMOS battery will reset all settings to default.



TOOLS:

- [T9 Torx Screwdriver](#) (1)
-

Step 1 — Left Side Panel



- Remove the two 11.6 mm T9 screws from the right side of the back of the printer.

Step 2



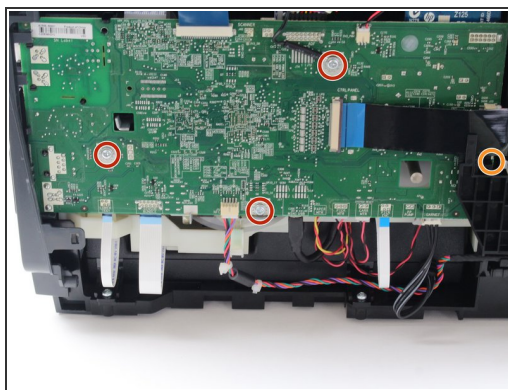
- Pull down the front panel to expose the screws on the front.
- Remove the one 11.6 mm T9 screw on the left side of the front face.

Step 3



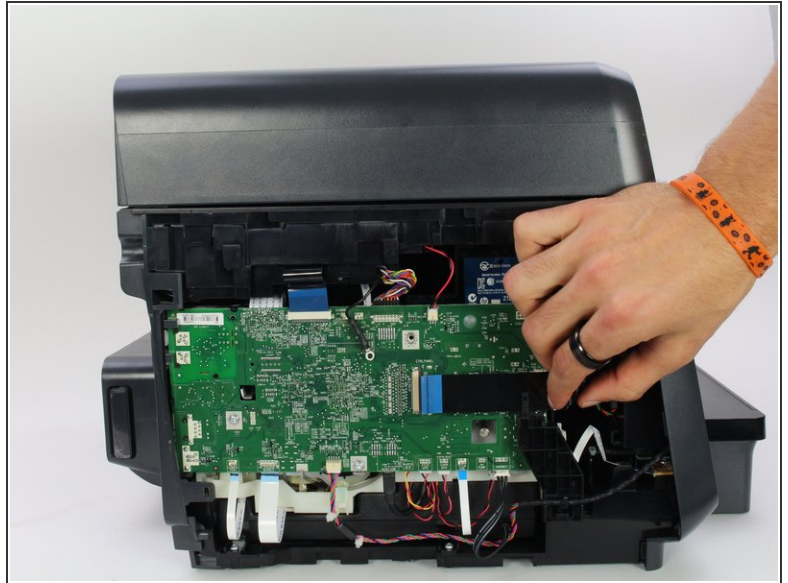
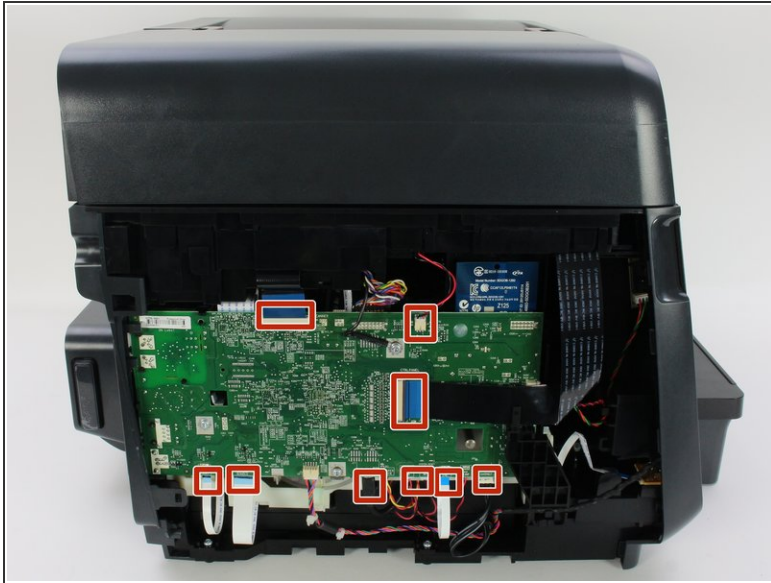
- Remove the side panel by pushing down and towards the back.
- ⓘ This step may be easier if the printer is laid on its side with the left side panel facing up.

Step 4 — Motherboard



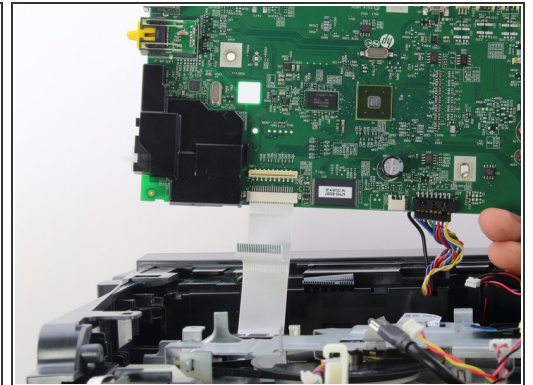
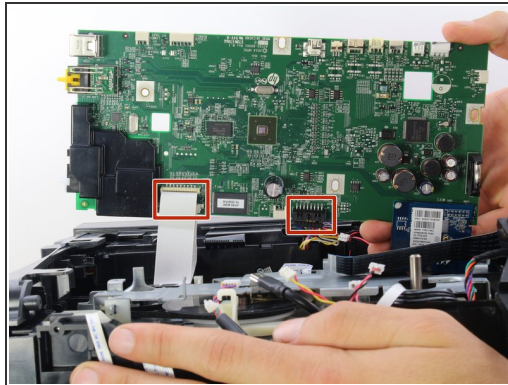
- Remove the three 5.3 mm T9 screws from the motherboard.
- Remove the one 6.7 mm T9 screw from the motherboard.

Step 5



- Remove the connectors from the front and sides of the motherboard by pulling straight away from the connection.

Step 6



- Lift the bottom of the motherboard and remove the connectors from the back.
- Remove the motherboard.
- ⓘ There are two white connectors underneath the motherboard, remove them separately.

Step 7 — CMOS Battery



- Locate the CMOS battery on the motherboard.
- Remove the CMOS battery by pinching the top and pulling away from the motherboard.

To reassemble your device, follow these instructions in reverse order.