



# **MerchSource the Black Series Boat Racer Battery Contacts in Remote Controller Replacement**

This guide will cover battery contact replacement in the remote controller to solve powering on issues.

Written By: Monica Reece



---

## INTRODUCTION

This repair guide will show you how to replace the metal contact points within the battery compartment of the remote controller for the MerchSource the Black Series Boat Racers device.

---



### TOOLS:

- [Phillips #1 Screwdriver](#) (1)
-

## Step 1 — Battery Contacts in Remote Controller



- Turn the remote controller over to the back.

## Step 2



- Slide the battery cover off in the direction of the arrow on the cover.

## Step 3



- Remove the batteries (2 AA).

## Step 4



- Using a Phillips #1 screwdriver, remove the four screws located in the four corners of the back of the remote controller.

ⓘ Screw length is 6 mm.

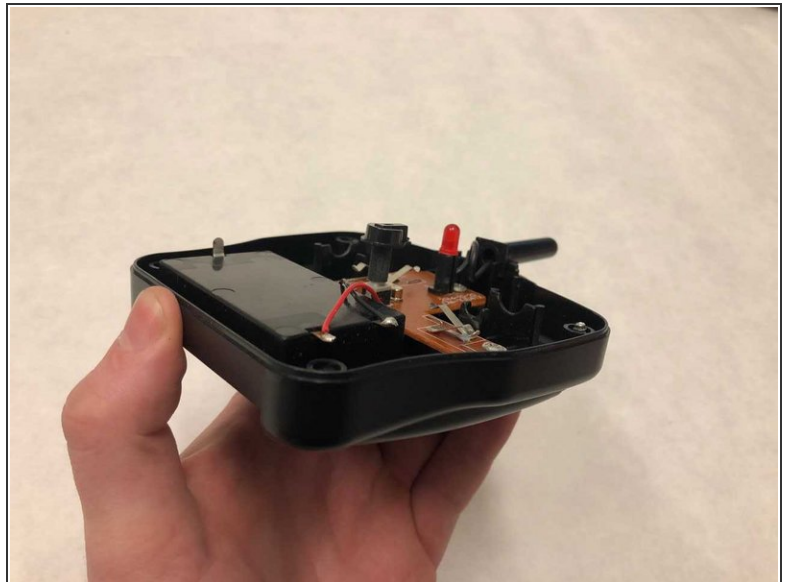
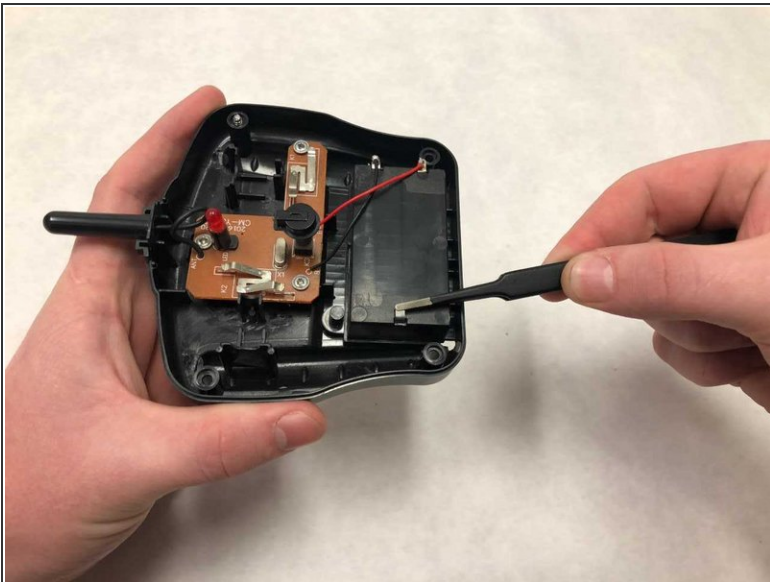


## Step 5



- Separate the two halves of the remote controller.

## Step 6



- Lift the metal tab until it is straight and can move through the slot in the battery compartment.

## Step 7



- Flip the remote controller to the external side and slide the metal connections in the battery compartment straight up.
- Slide the new connections straight down into the slot in the battery compartment, flip to the internal side, and bend the metal tab until it's parallel with the battery compartment.

To reassemble your device, follow these instructions in reverse order.