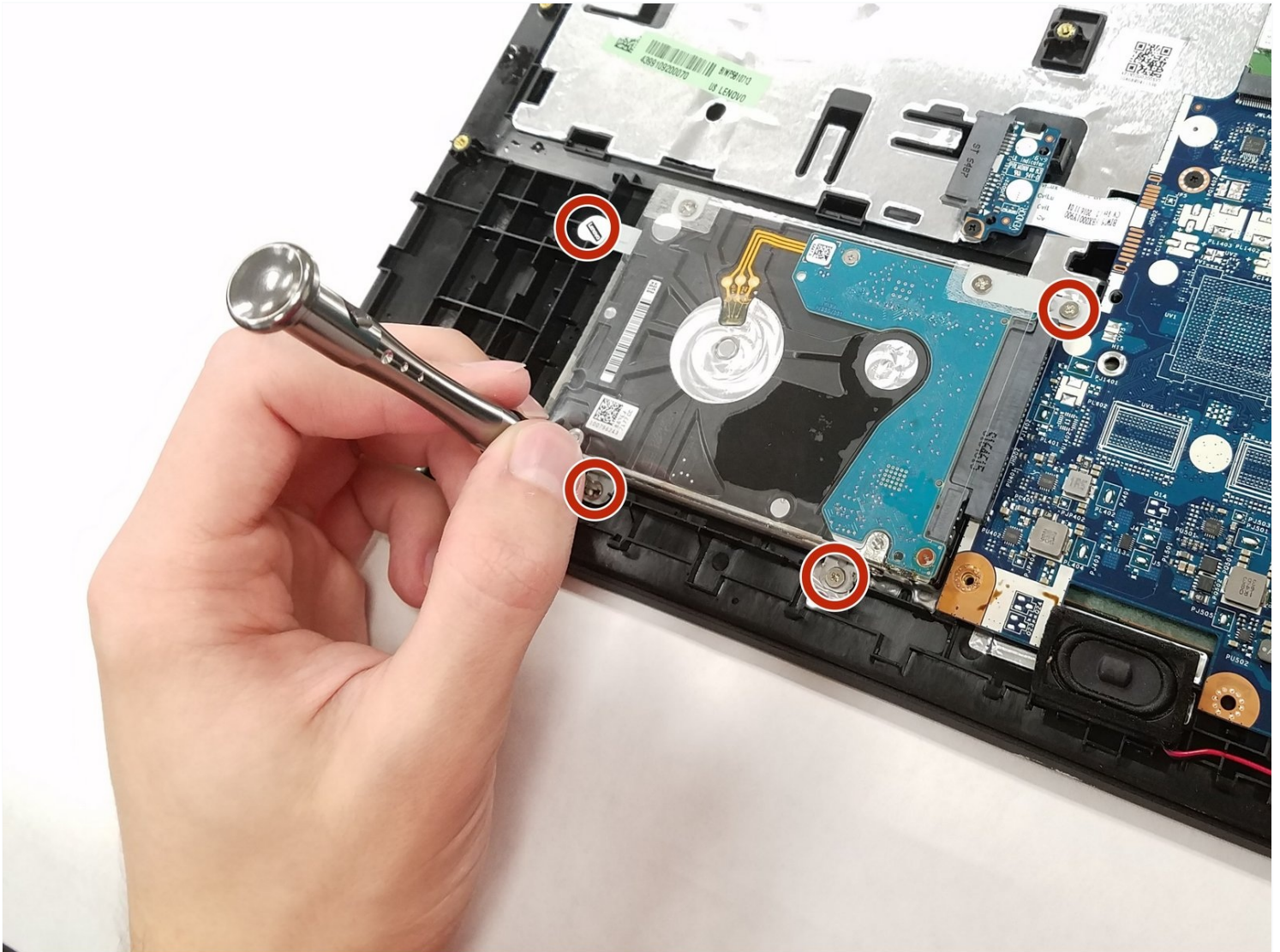




# Lenovo IdeaPad 110-15ISK Hard Drive Replacement

If your laptop does not load past the Lenovo...

Written By: Jakub Szark



# INTRODUCTION

If your laptop does not load past the Lenovo loading screen, the wheel spins endlessly, or your laptop displays a blue screen with an error message similar to 'Your PC ran into a problem and needs to restart' the Hard Drive could be damaged. This guide will walk you through how to replace the damaged or malfunctioning Hard Drive.

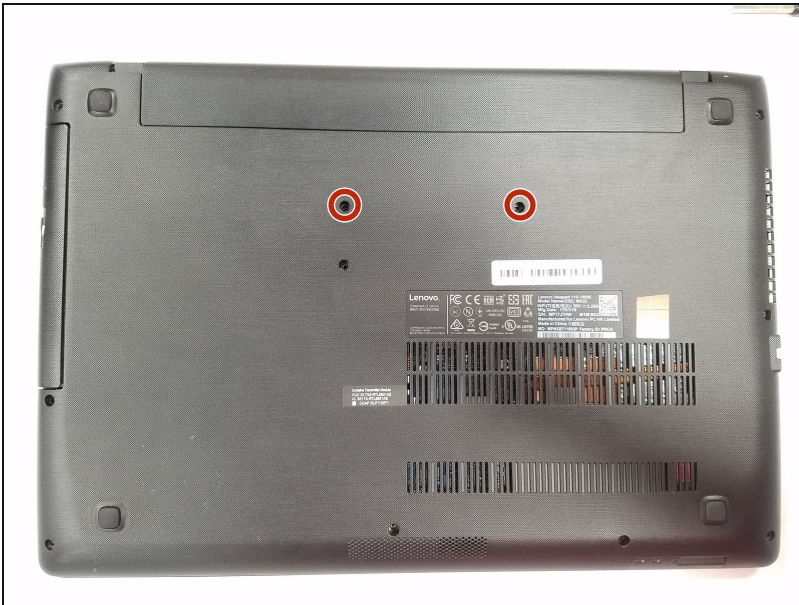
## TOOLS:

Spudger (1)  
Phillips #1 Screwdriver (1)  
iFixit Opening Tool (1)

## PARTS:

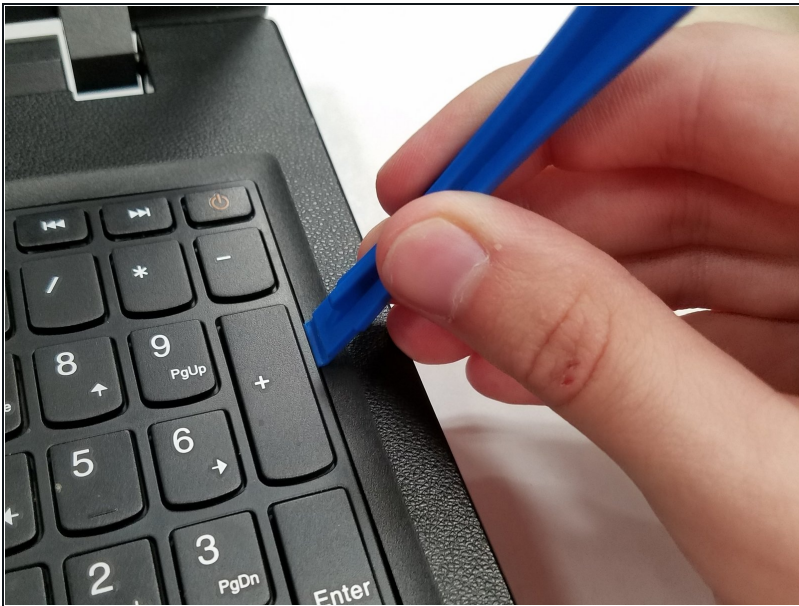
Crucial MX500 1 TB SSD (1)  
Crucial MX500 250 GB SSD (1)  
Crucial MX500 500 GB SSD (1)  
2 TB SSD (1)

## Step 1 — Keyboard



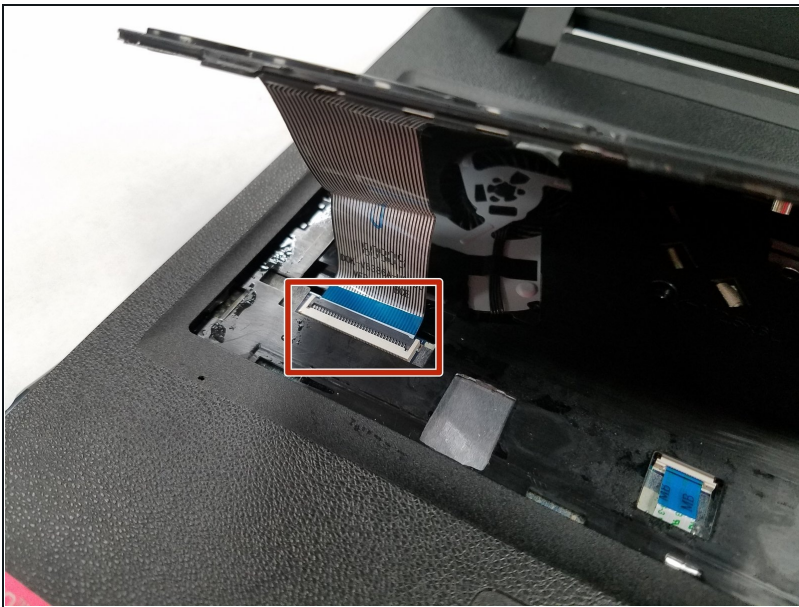
- Flip the IdeaPad bottom side up.
- Using a Phillips #1 screwdriver, remove the two 6.0mm screws on the back panel, that hold the keyboard.
- Flip the computer back to top facing.

## Step 2



- Open the lid.
- Use the plastic opening tool to pry the keyboard up and away from the bottom assembly.

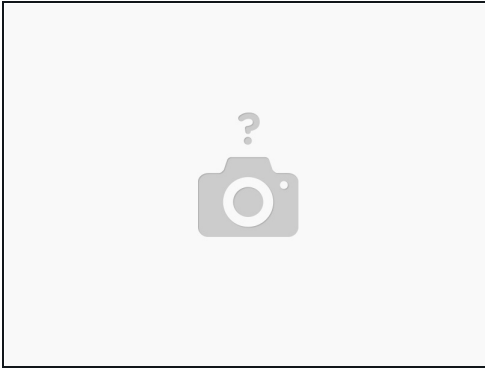
## Step 3



- Next disconnect the keyboard cable by using the tip of the spudger or your finger to lightly push out the ribbon from the contact port.
- Completely remove the keyboard from the bottom assembly.

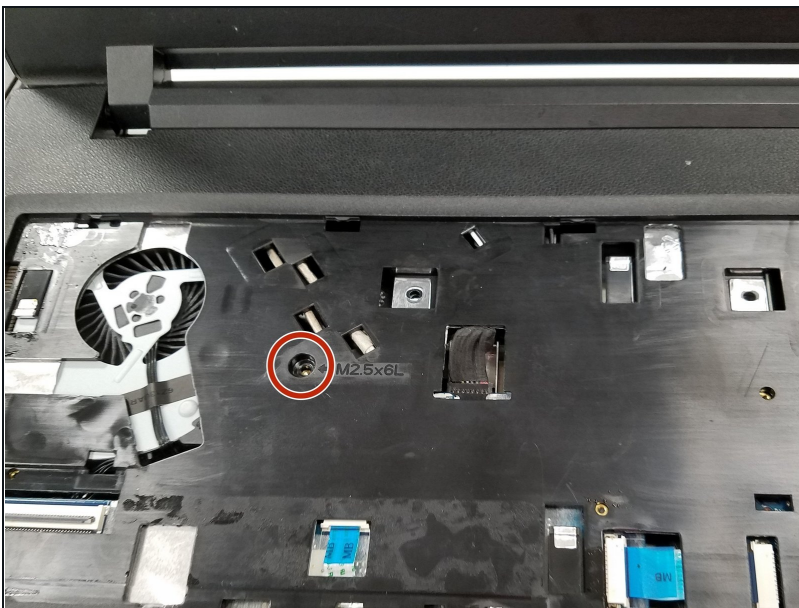


## Step 4



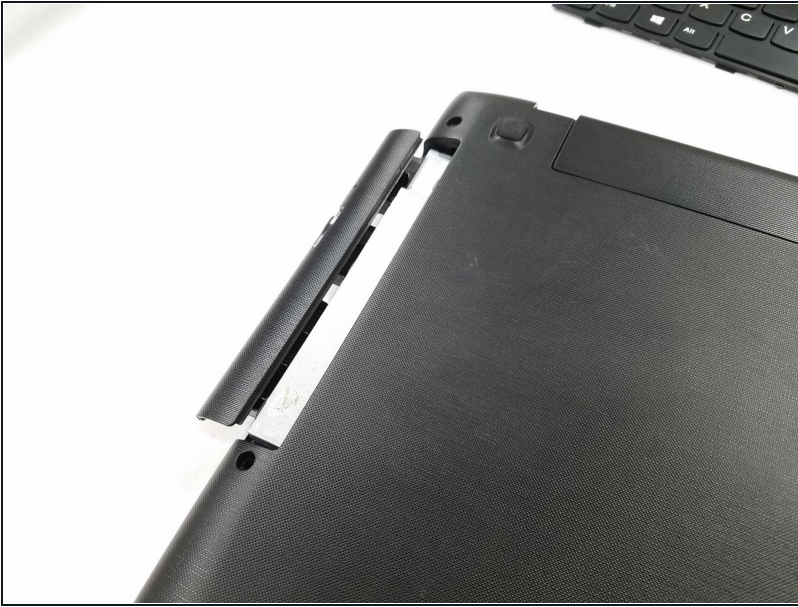
- Unlock the ZIF connector before pulling the cable out

## Step 5 — Optical Drive



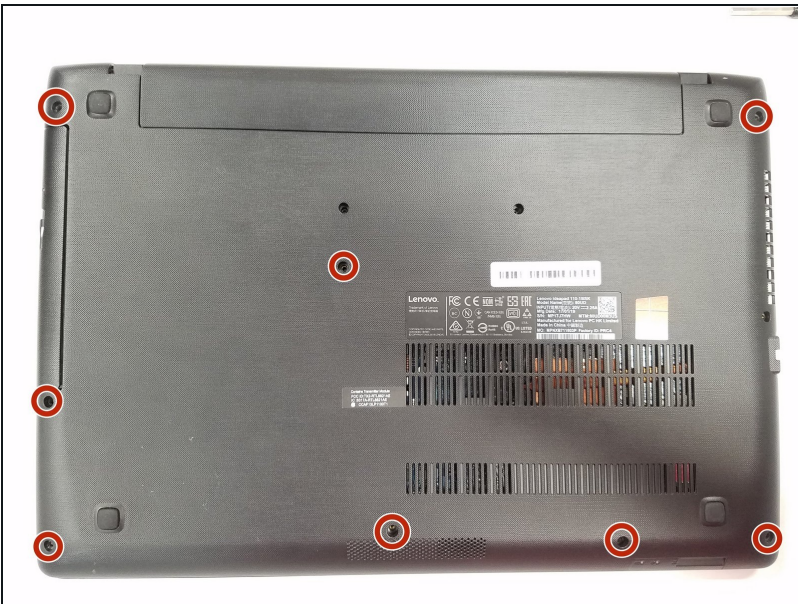
- Using a Phillips #1 screwdriver, unscrew the one 5.0mm screw on the back panel.

## Step 6



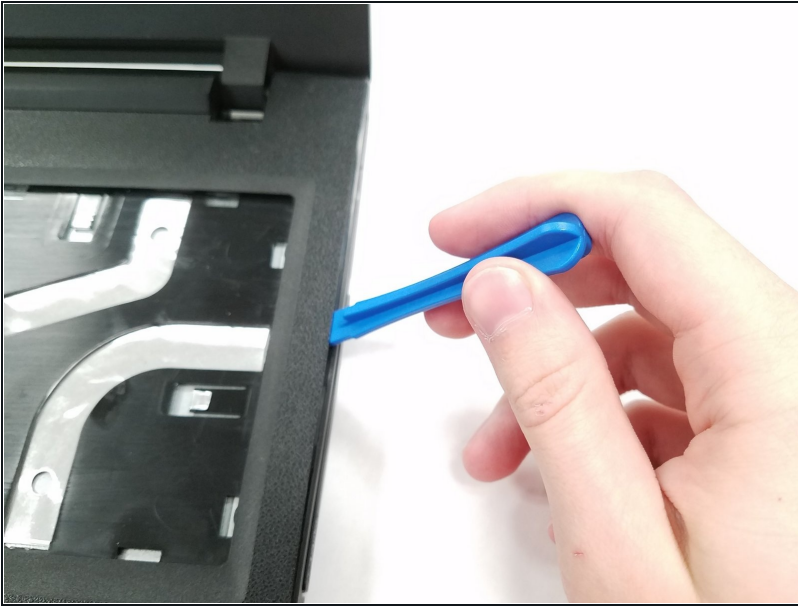
- Flip the laptop to its back and the optical drive is located at the top left corner.
- Remove the optical CD DVD drive by lightly pulling it out of the assembly.

## Step 7 — Upper Case



- Place the laptop bottom facing up.
- Using a Phillips #1 screwdriver, remove the remaining eight 6.0mm screws on the back panel.
- Flip the computer back to top facing.

## Step 8



- Separate the top case from the bottom using a plastic opening tool.
- Continue prying the top and bottom case from each other all around the perimeter of the laptop.

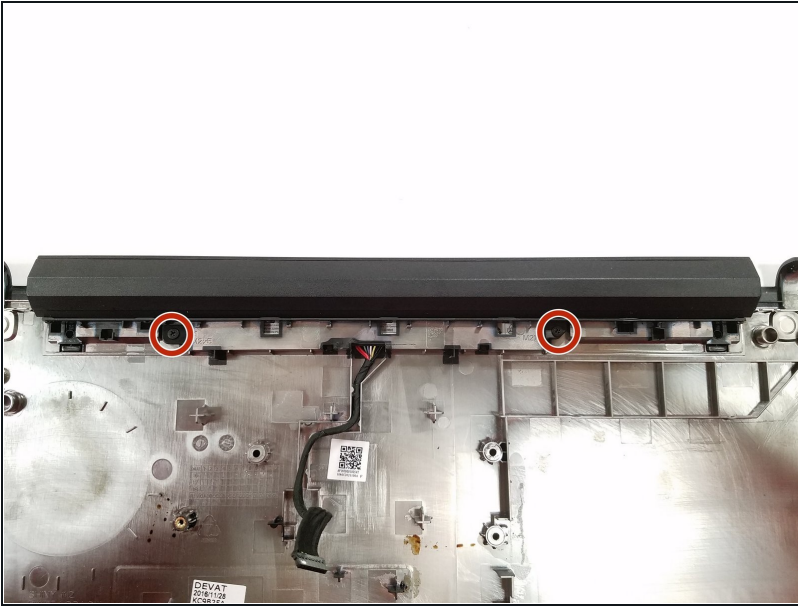
## Step 9 — Battery



- Turn the laptop upside down and gently pry the top case free from the bottom case.

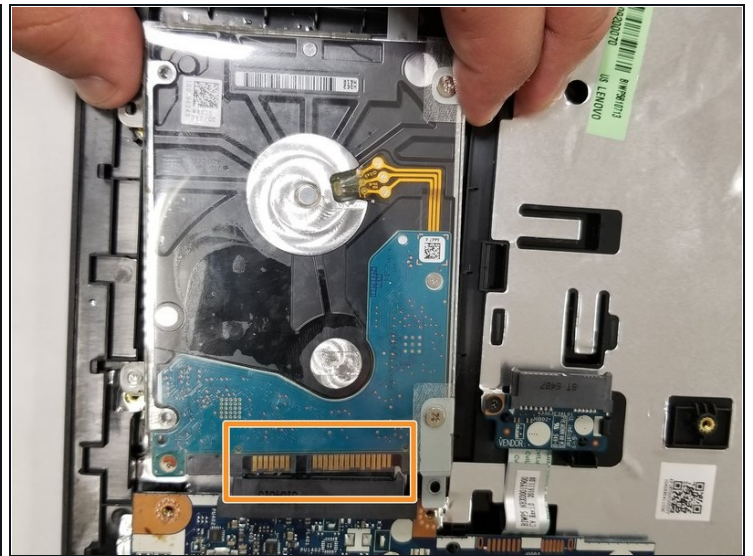
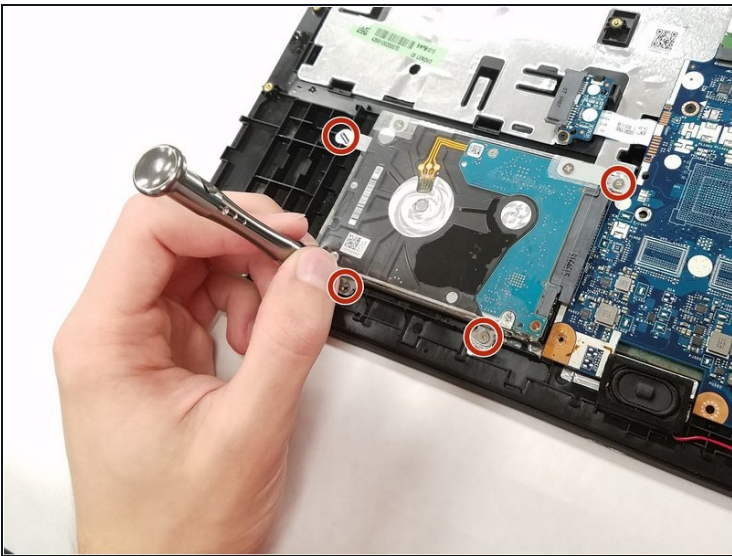


## Step 10



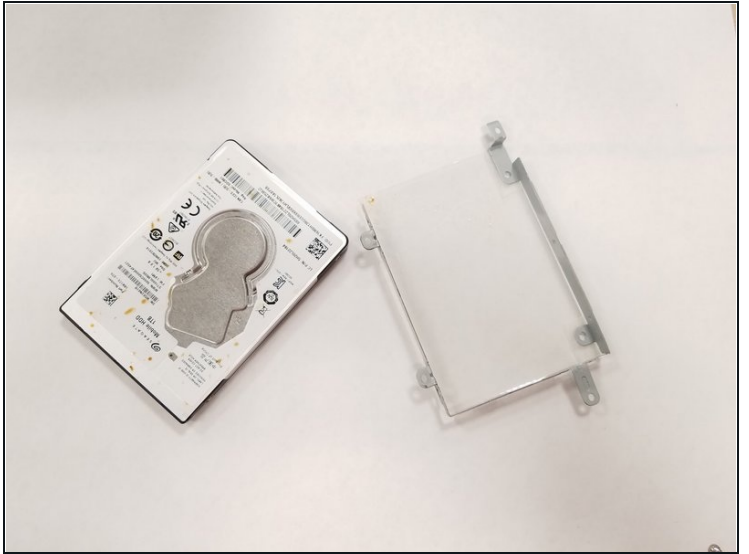
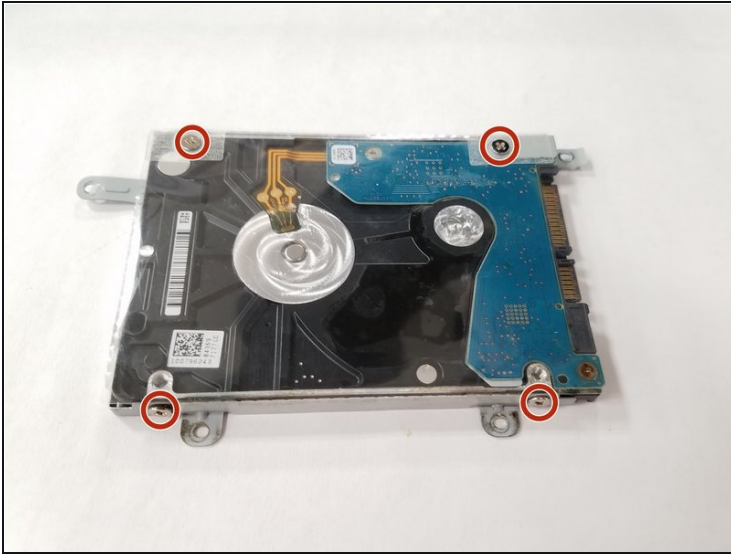
- The battery is attached to the bottom case of the laptop.
- Remove the two 4.0mm screws.
- Push the battery component away from you in order to completely remove the battery from the fixture.

## Step 11 — Hard Drive



- Using a Phillips #1 screwdriver, remove the four 4.0mm corner screws securing the hard drive assembly to the body.
- Disconnect the hard drive from the back panel by sliding it to the left until loosened.
- Remove it completely by lifting the hard drive out of the back panel.

## Step 12



- Using the Phillips #1 screwdriver, remove the four 3.0mm corner screws from the caddy of the hard drive.
- Separate the plastic caddy from the hard drive.

---

To reassemble your device, follow these instructions in reverse order.