



JBL Pulse 2 Speaker Replacement

This guide will show you the steps necessary to replace the speakers for the JBL Pulse 2.

Written By: Emilee Hicks



INTRODUCTION

If there is a problem with the audio of your JBL Pulse 2, you may need to replace the speakers. Replacing the speakers ensures that you receive the best listening quality when using your device.



TOOLS:

- [Metal Spudger](#) (1)
 - [Spudger](#) (1)
 - [Phillips #1 Screwdriver](#) (1)
 - [Tweezers](#) (1)
-

Step 1 — Battery



- Remove the rubber rings from either end of the device.
- If there is difficulty in lifting the rings from the device, use the metal spudger.

Step 2



- Remove the four 4.8mm Phillips #1 screws from each end of the device with the Phillips head screwdriver.
- Lift the end pieces off of the device.

Step 3



- Remove the four 9.5mm Phillips #1 screws from each end of the device.

Step 4



- Peel one end off and slowly draw it across the length of the device until you get to the other side.

Step 5



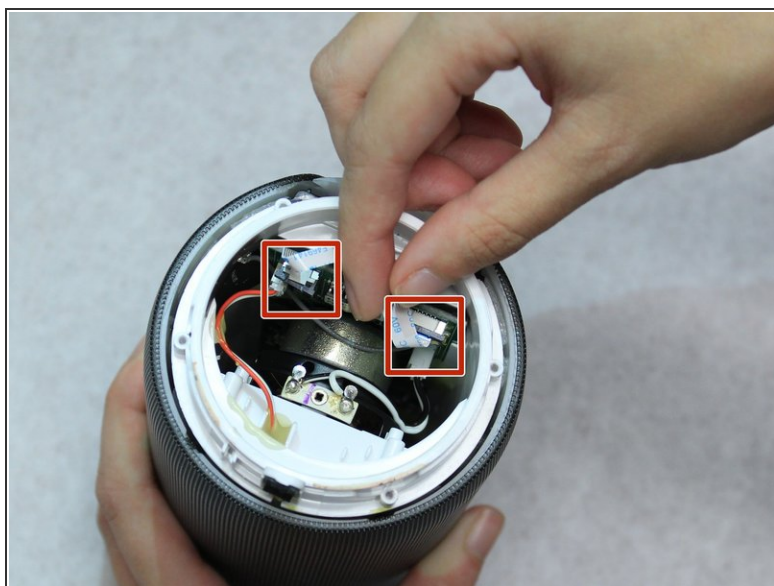
- Remove the four 7.9mm Phillips #1 screws along the black centerpiece of the device between the camera and the auxiliary port.
- Lift up the casing and circuit board but do not try and remove the ribbon wires.

Step 6



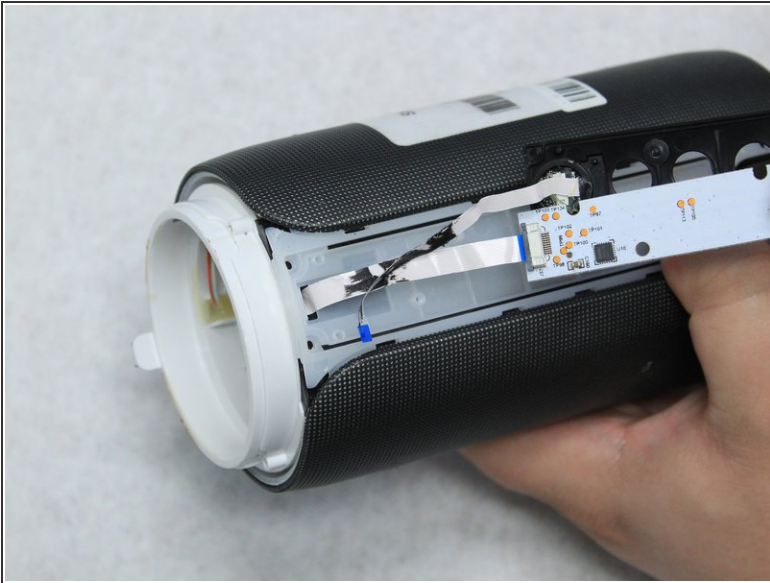
- Remove the cover from the end that the ribbon wires are attached to. It should peel off easily.

Step 7



- Unlatch the mechanism holding the ribbon wires in place, then disconnect them from the motherboard.
- To access the wires, remove some of the black glue holding them in place with the spudger.

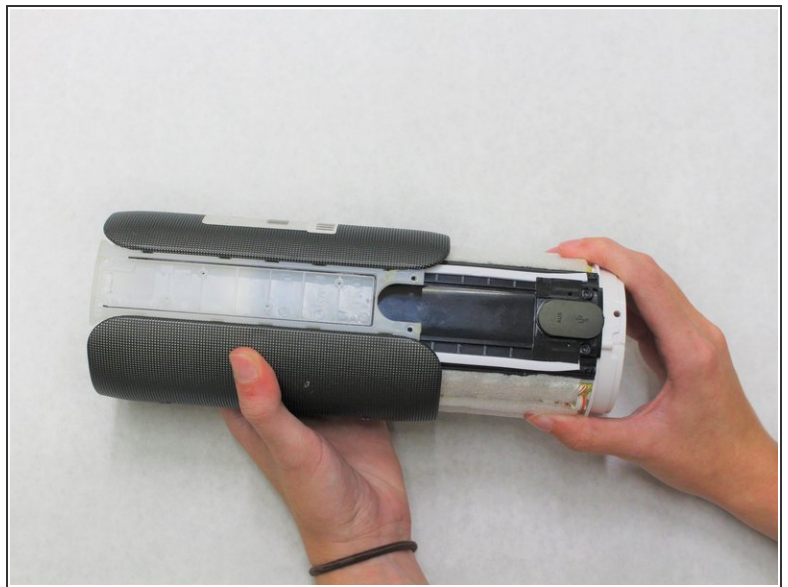
Step 8



- Slowly pull the ribbon wires out from the outside.

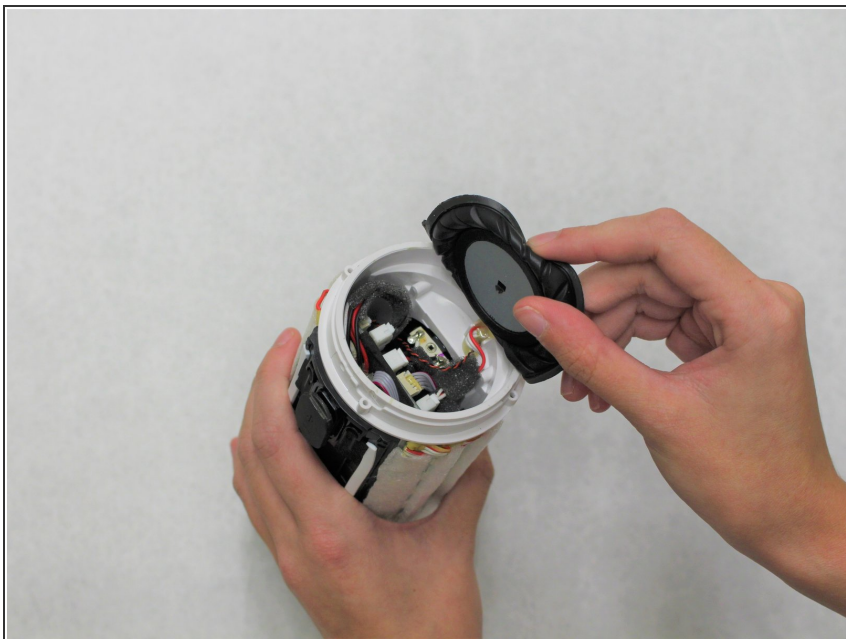
⚠ If there is too much resistance, remove more of the black glue.

Step 9



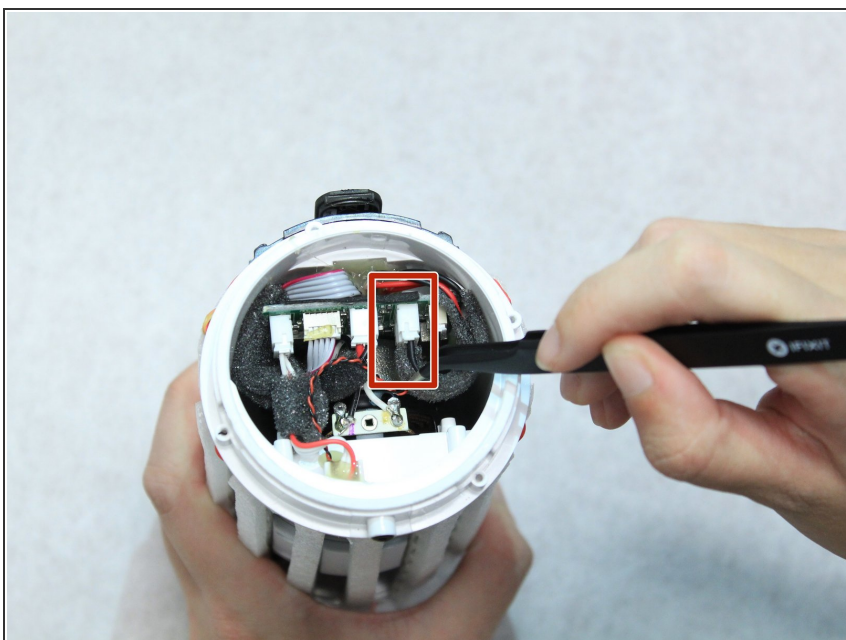
- Remove the four 7.9mm Phillips #1 screws around the edges of the center piece.
- Slide the outer casing off away from the auxiliary and micro USB port.

Step 10



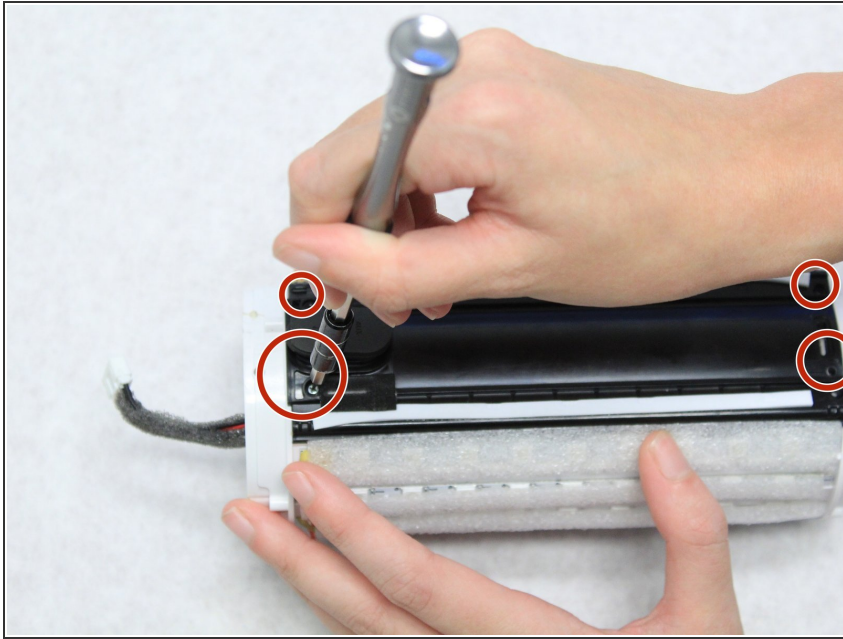
- Remove the other end of the device to access the wiring underneath it.

Step 11



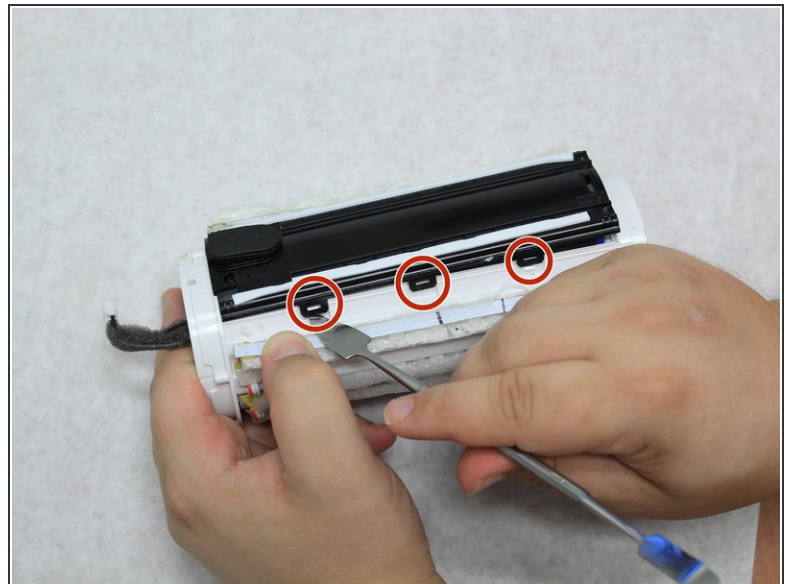
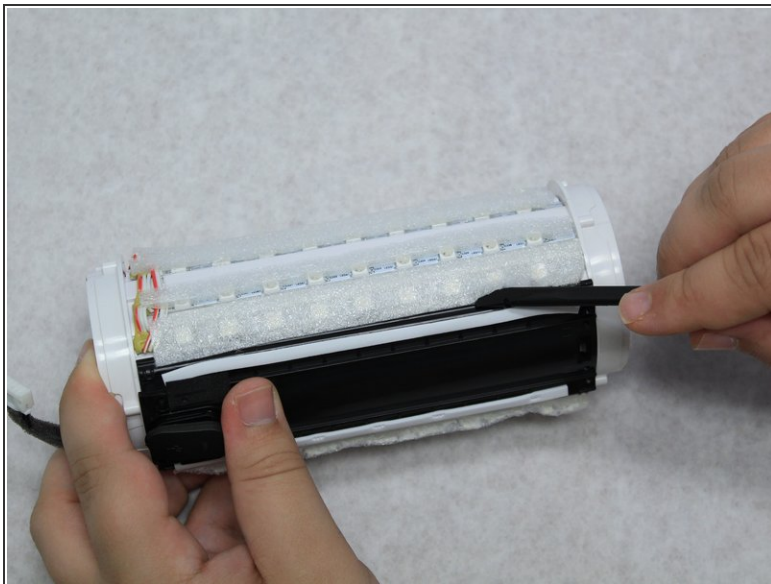
- Use the angled tweezers to disconnect the battery from the motherboard. It will take some work to remove this piece.

Step 12



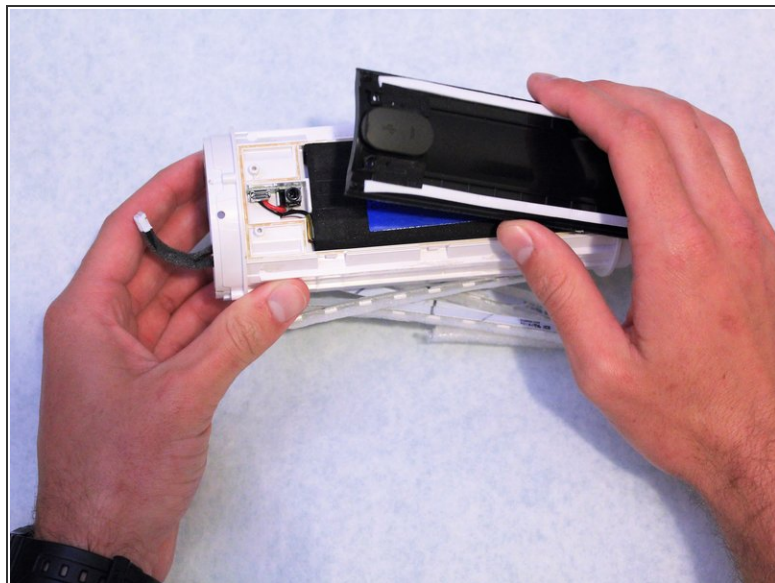
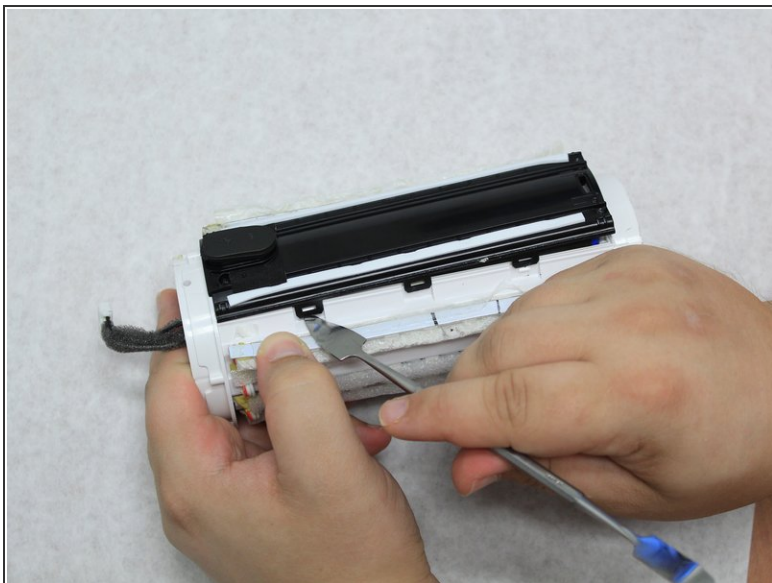
- Remove the four 7.9mm Phillips #1 screws from the black centerpiece of the device.

Step 13



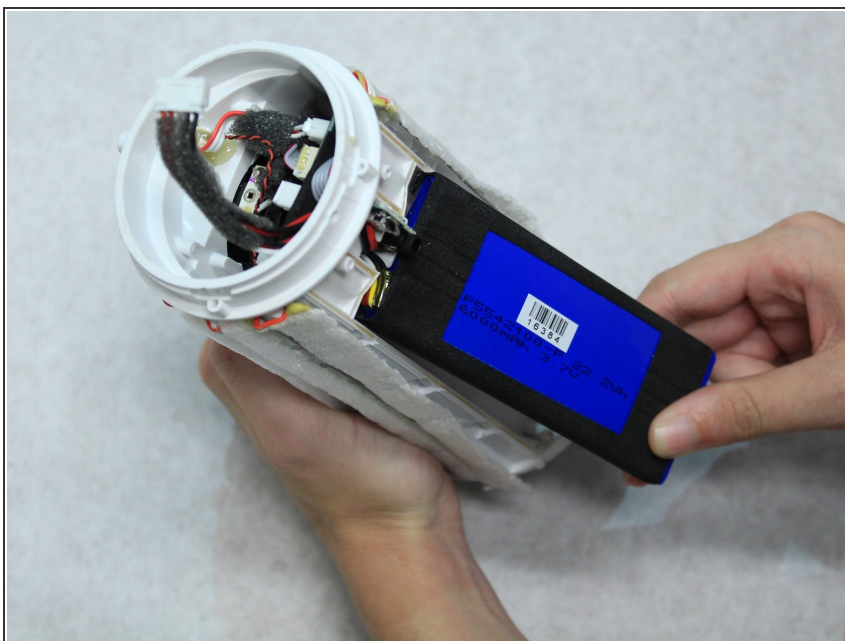
- Use the spudger to reach under the sides of the black centerpiece to access the six latches, three of which are on each side.

Step 14



- Lift the black centerpiece off with the metal spudger to reveal the battery underneath.

Step 15



- Use a hot air gun to soften the hot glue in order to fully remove the battery.

Step 16 — Speaker



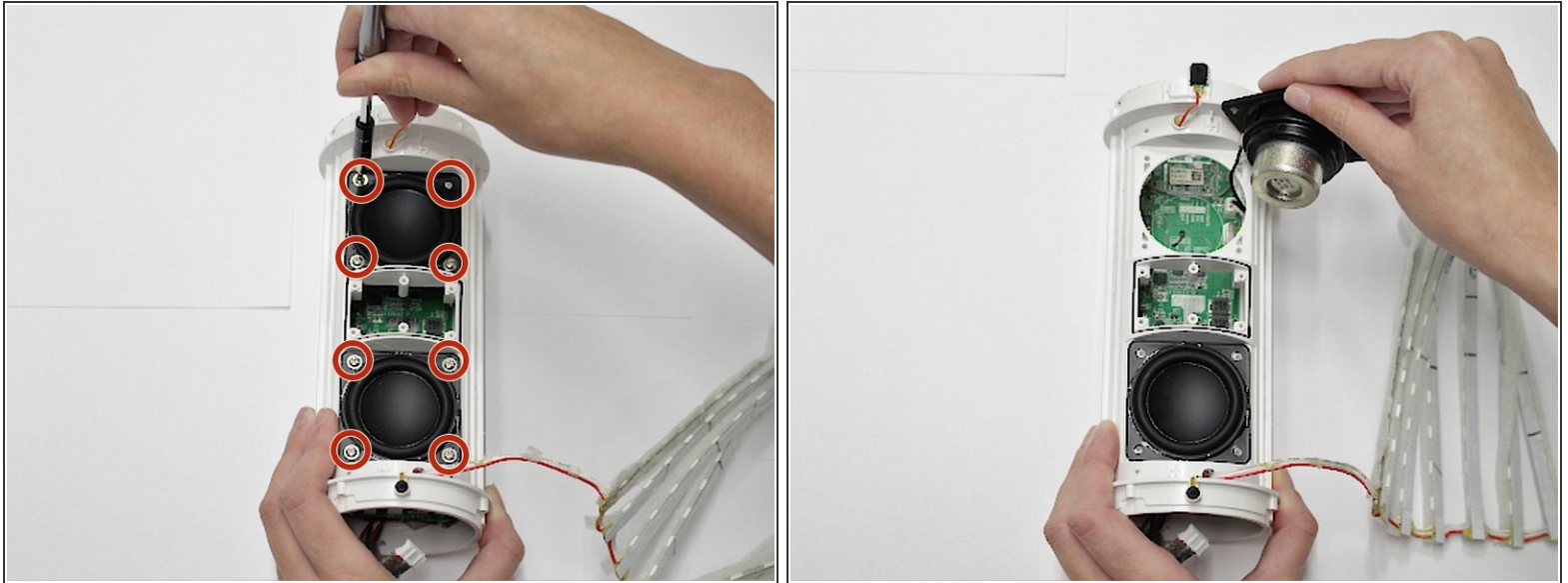
- Remove the LED strips from the outside of the white plastic casing.

Step 17



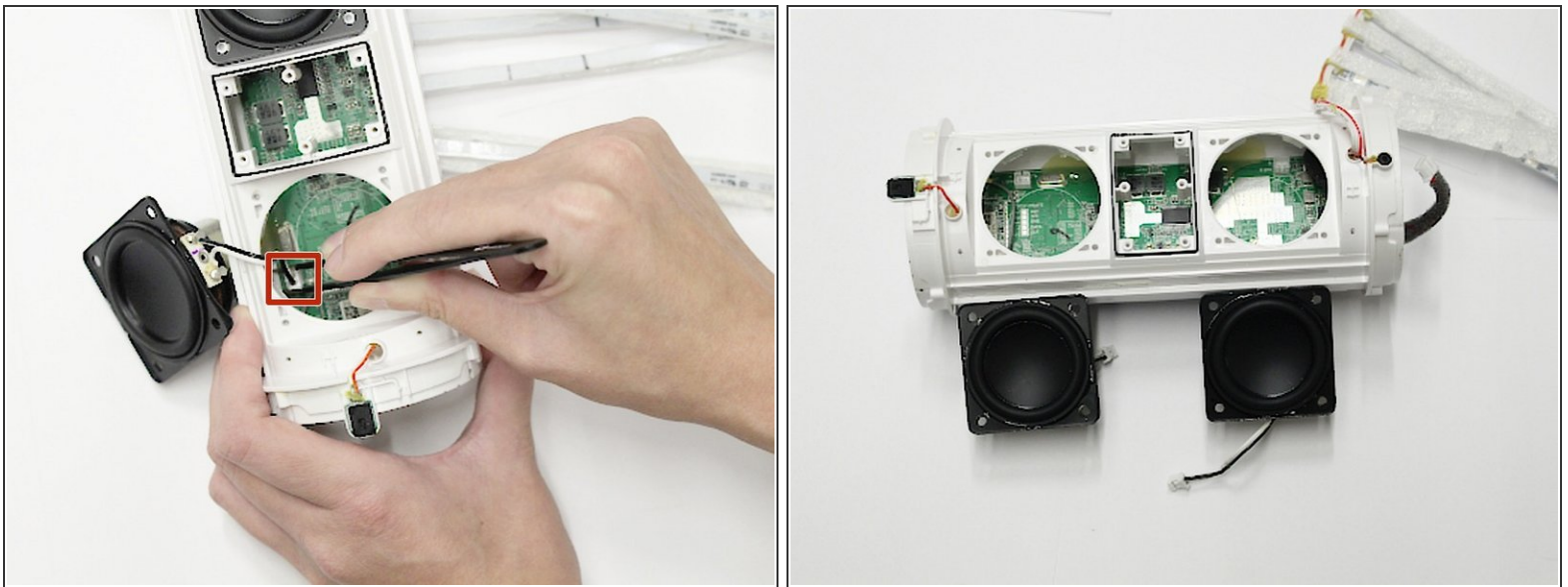
- Use the Phillips #1 screwdriver to remove the ten 9.5mm screws that hold the cage in place.
- Lift the cage off to access the internal components.

Step 18



- Use the Phillips #1 screwdriver to remove the eight 6.4mm screws that hold the speakers in place.
- Partially remove the speakers so that you can access the components underneath them.

Step 19



- Use the straight tweezers to disconnect the speakers from the motherboard.
- Fully remove the speakers once they are disconnected from the motherboard.

To reassemble your device, follow these instructions in reverse order.