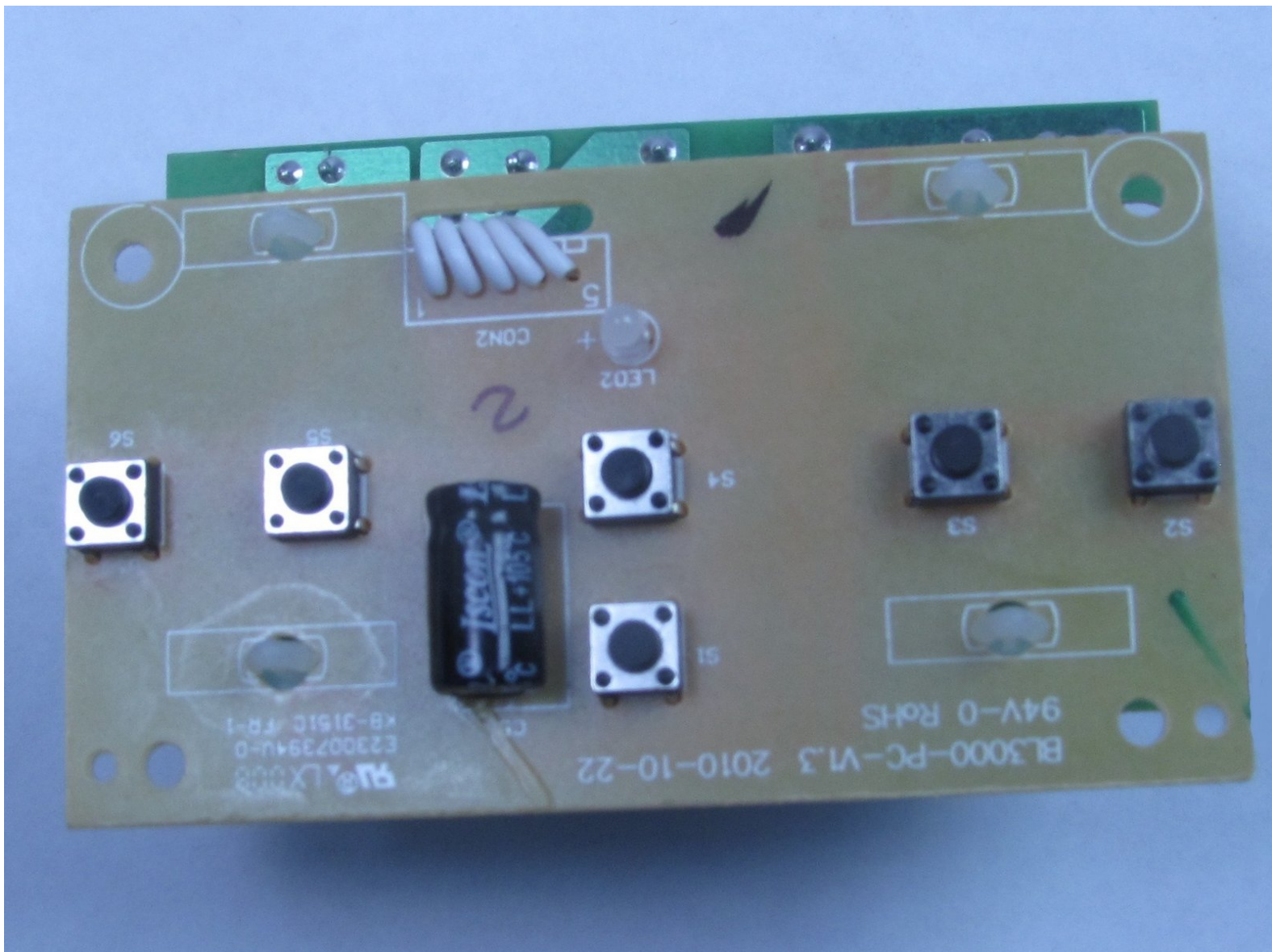




# Black and Decker BL3000S Circuit Board

Remove the circuit board from the Black and Decker BL3000S.

Written By: Andrew







## TOOLS:

- [2.5 mm Flathead Screwdriver](#) (1)
  - [Phillips #1 Screwdriver](#) (1)
  - [TA20 Screwdriver](#) (1)
-



## Step 1 — Blender Base



- ❗ Before disassembling the blender base, make sure the blender is disconnected from any power outlet.
- Lift the jar straight up from the base without tilting the jar.

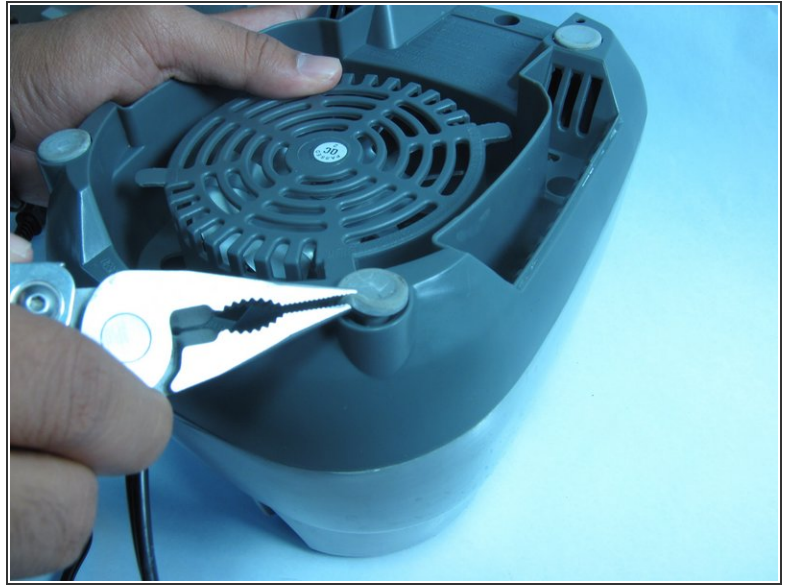
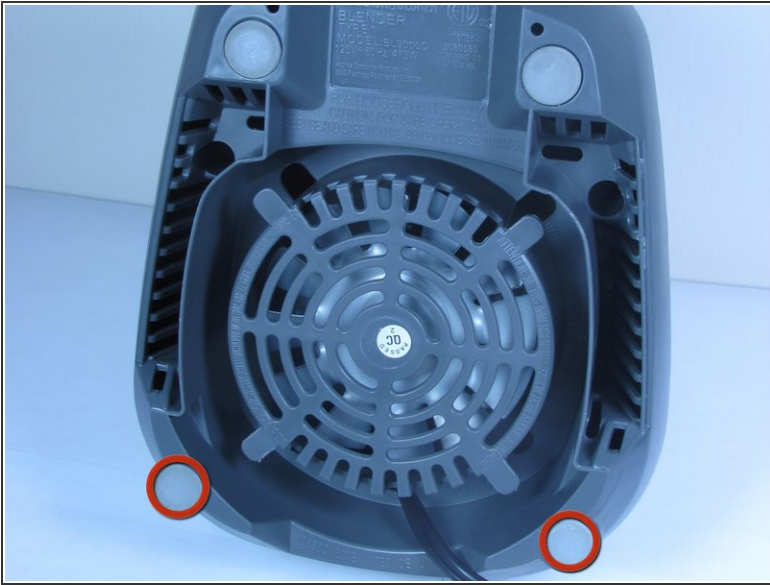
## Step 2



- Remove the top three 1/4 inch base screws using a Philip's head screwdriver.



### Step 3



- Remove the two base leg covers next to the power cord using pliers or a flat-head screwdriver.

**i** This provides access to the base screws beneath.

### Step 4



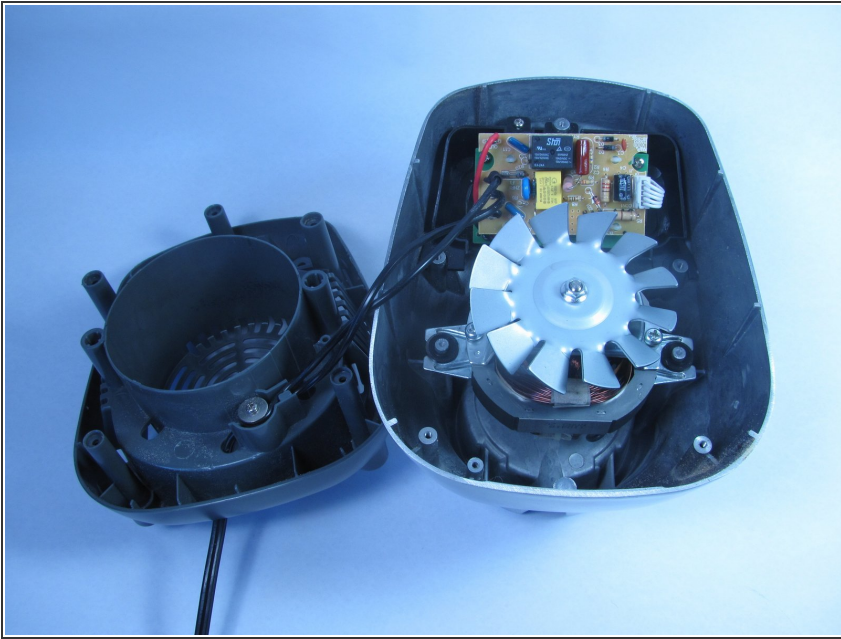
- Remove the following screws that secure the top and bottom halves of the base.
  - One 1/4 Phillips screw
  - One TA-20 screw

**i** Both screwdrivers must have a minimum of a three inch shank (length).

**i** Screwdrivers with extenders will not fit down the access holes.

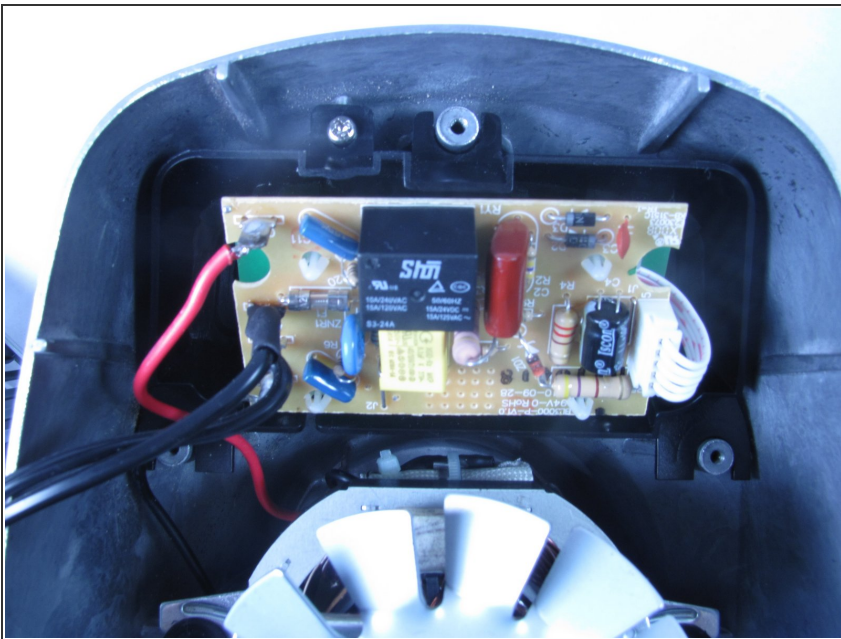


## Step 5



- Lift the top half of the base from the bottom half of the base to reveal the internal mechanism.

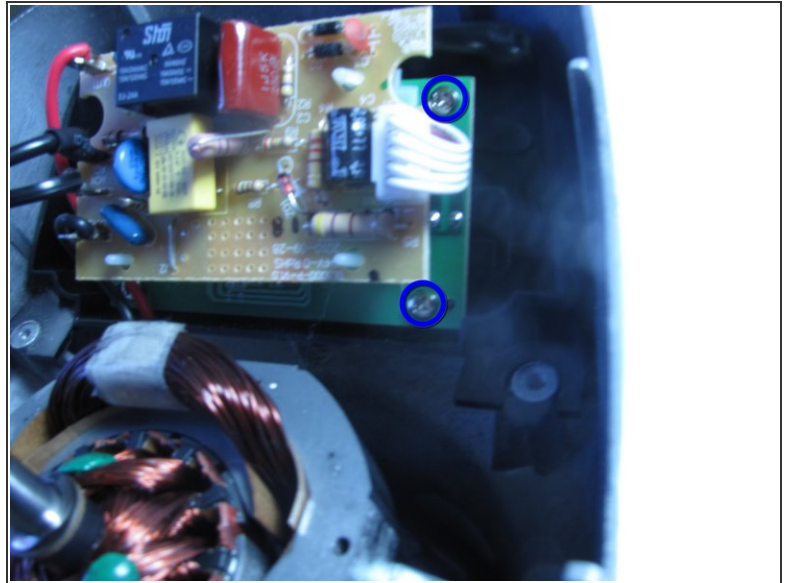
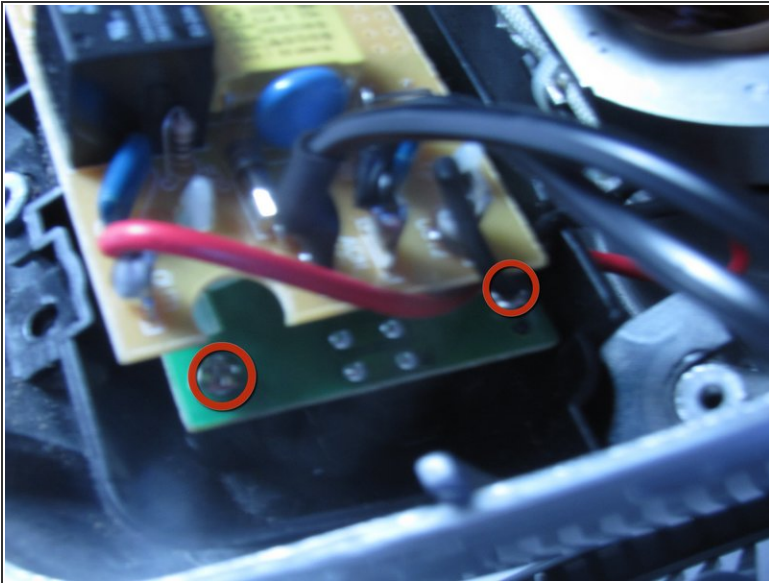
## Step 6 — Circuit Board



- Once you have the base removed, the circuit board should be clearly visible inside.

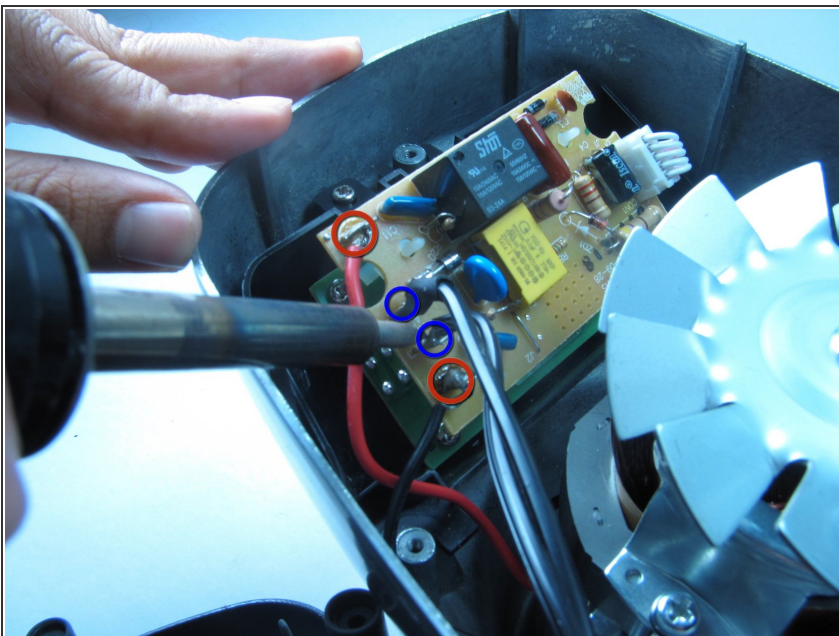


## Step 7



- Remove the four screws located on the circuit board.
  - Two are on the left side.
  - Two are on the right side.

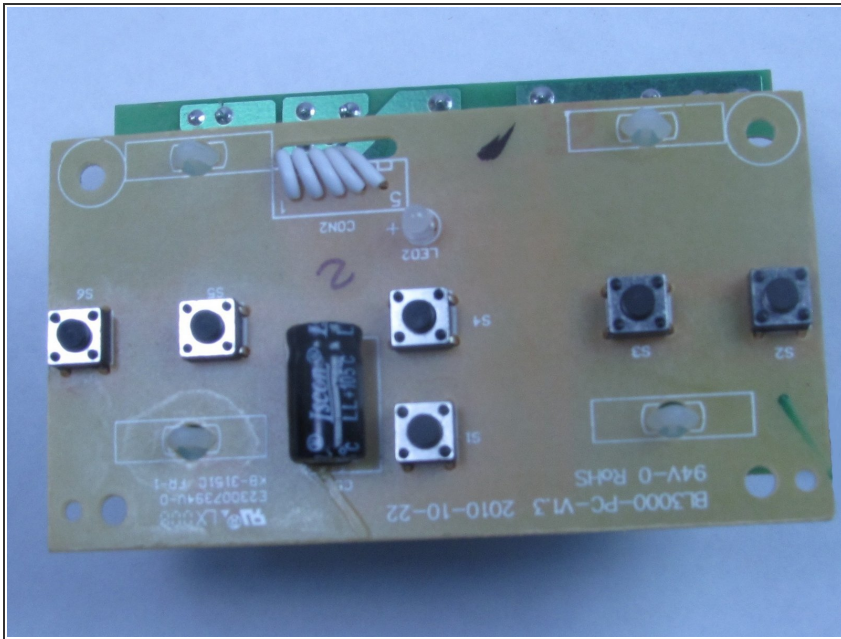
## Step 8



- Remove the following soldered connections with a soldering iron:
  - Motor wires
  - Power cord wires



## Step 9



- Lift the circuit board straight up to remove it from the base.

To reassemble your device, follow these instructions in reverse order.