



Dell Inspiron 15-7547 Keyboard Replacement

This guide shows the process of removing the...

Written By: Isaac Brooks



INTRODUCTION

This guide shows the process of removing the keyboard from the Dell Inspiron 15-7547.



TOOLS:

- [Spudger](#) (1)
- [Phillips #00 Screwdriver](#) (1)
- [Phillips #0 Screwdriver](#) (1)



PARTS:

- [Dell Keyboard - DKDXH](#) (1)

Step 1 — Bottom Cover



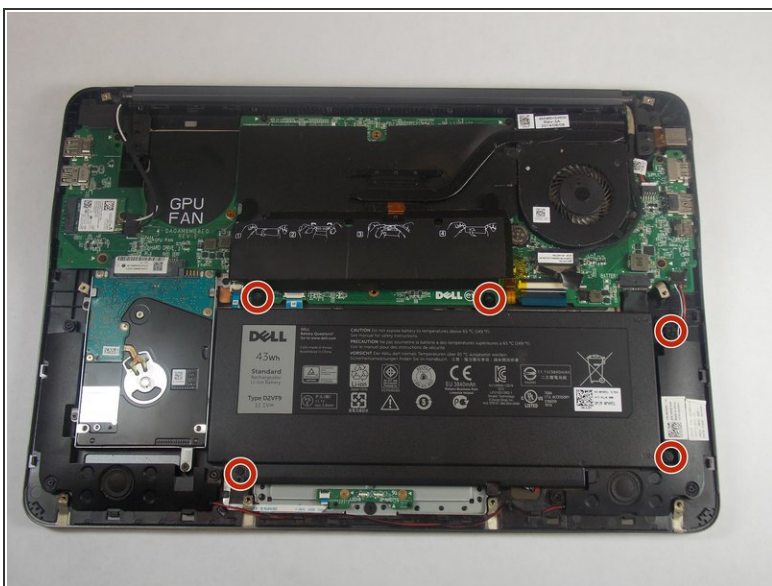
- ❗ Before you begin, be sure to turn off your laptop and unplug it from the outlet.
- Close the display and flip the laptop on its back.
- Loosen the ten 5.0 mm-long Phillips #0 screws.
 - The four screws marked with orange will remain captive to the cover.

Step 2



- Use a spudger to pry up and loosen the back cover.
- Remove the back cover.

Step 3 — Battery



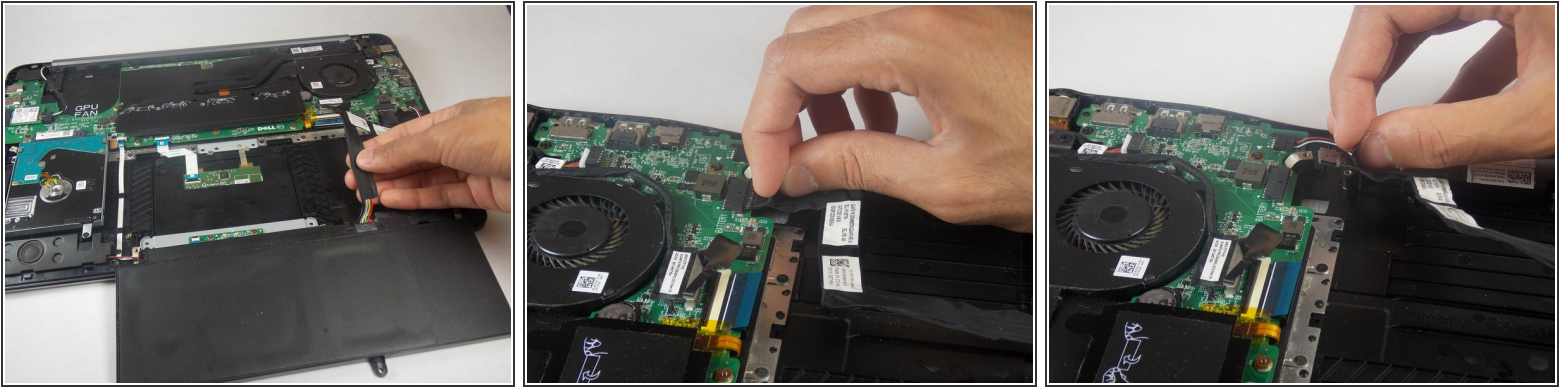
- Remove the five 5.0 mm-long Philips #0 screws that connect the battery to the case.

Step 4



- Lift the battery out of the case.

Step 5



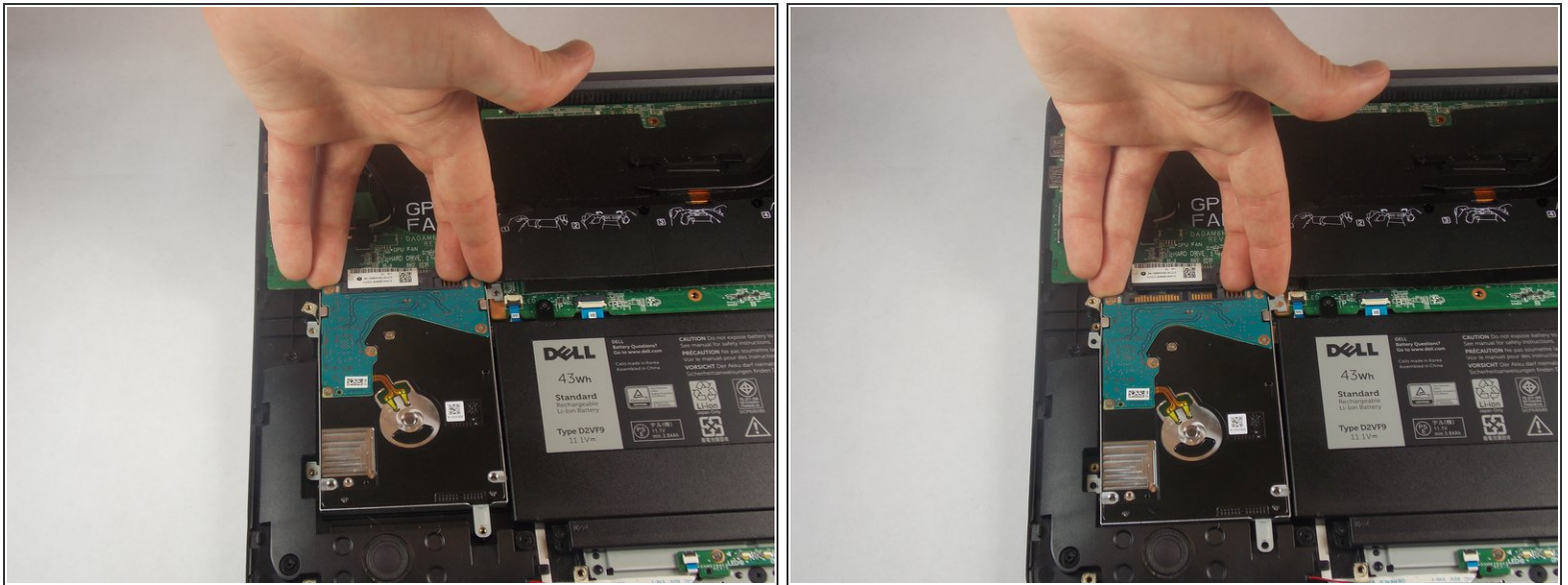
- Pull the battery cable's pull tab towards the battery to disconnect it from the motherboard.
⚠ Pull parallel to the motherboard, not straight up.
- ⓘ Most of the cable is attached to the case with adhesive, which may cause slight resistance.
- Remove the battery.

Step 6 — Hard Drive



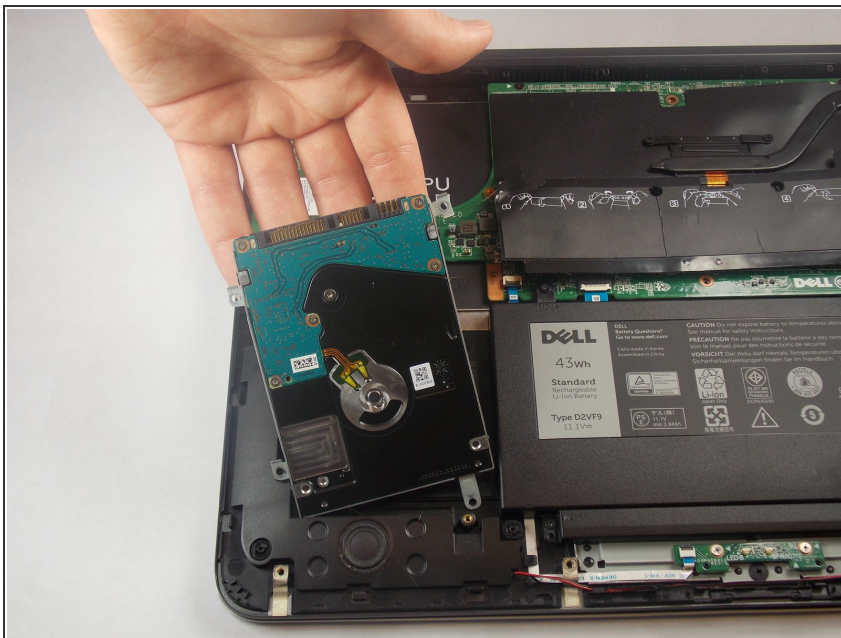
- Remove the four 5.0 mm-long Philips #0 screws connecting the hard drive to the chassis.

Step 7



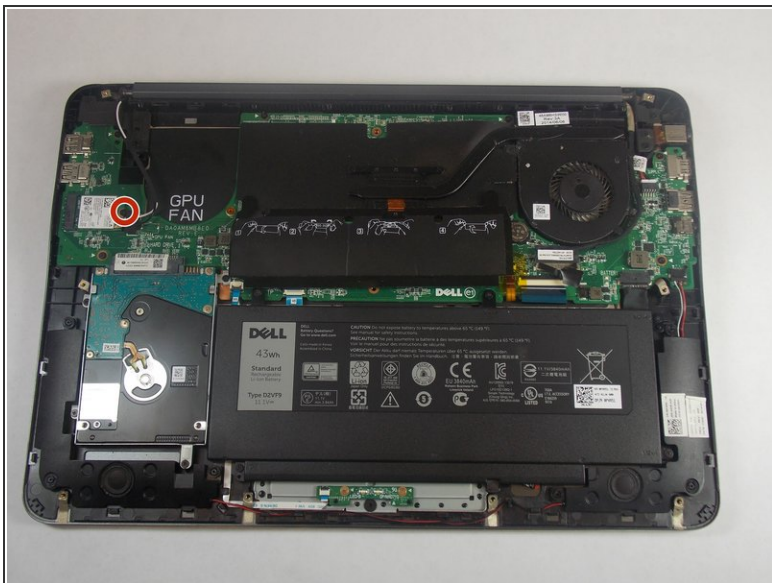
- Disconnect the hard drive from the motherboard by placing your fingers at the back, and pulling forward towards the front of the chassis.

Step 8



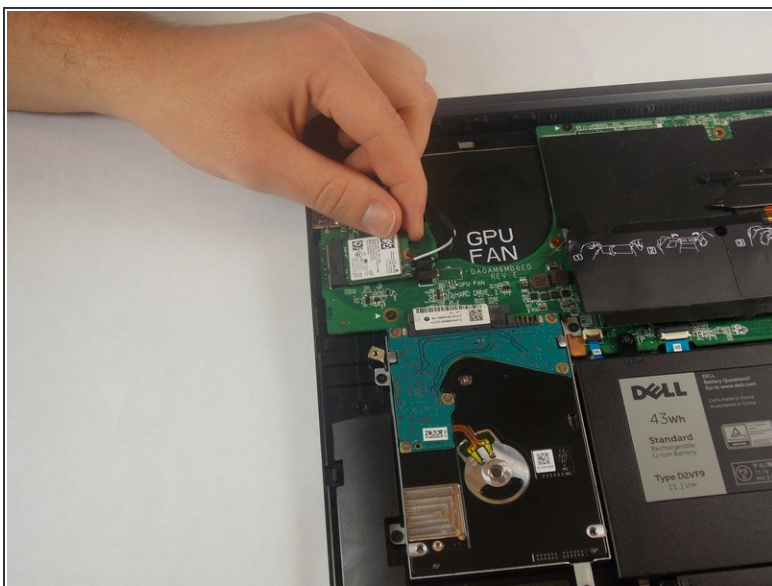
- Lift the hard drive out of the chassis.

Step 9 — WiFi Card



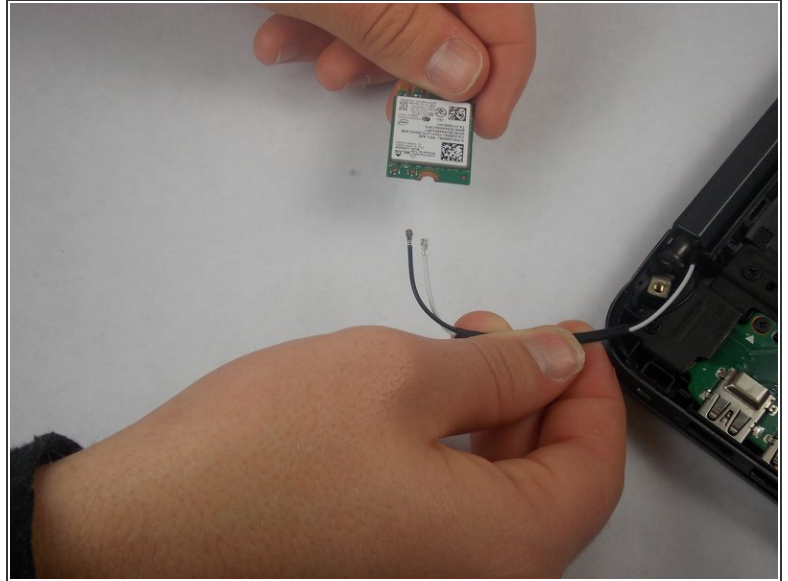
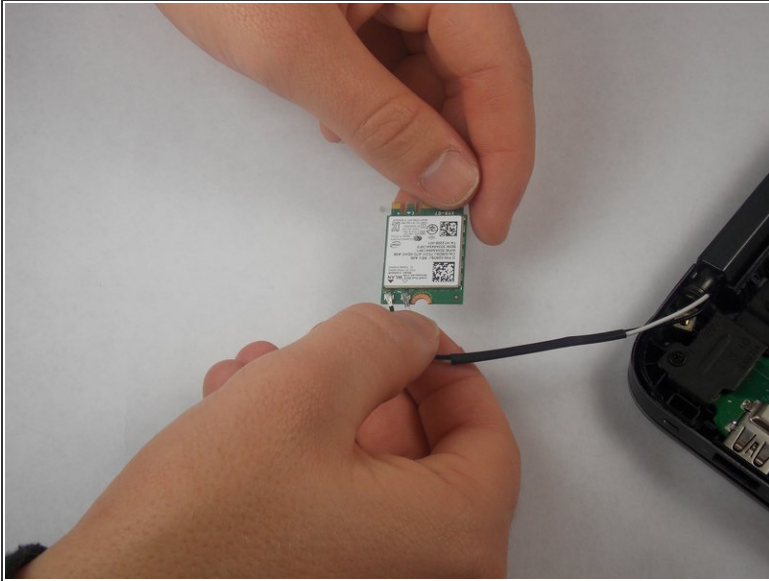
- Remove the 3.0 mm-long Philips #0 screw at the end of the Wifi-Card

Step 10



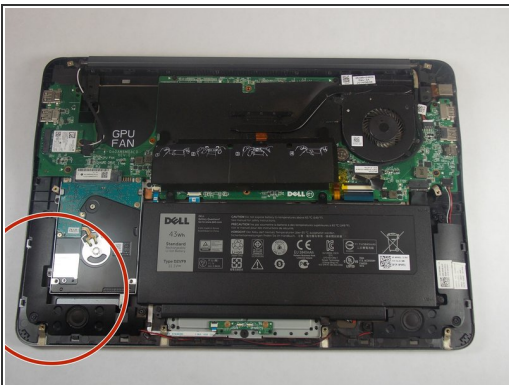
- Remove the Wifi-Card from its socket by pulling away and up from the connector.

Step 11



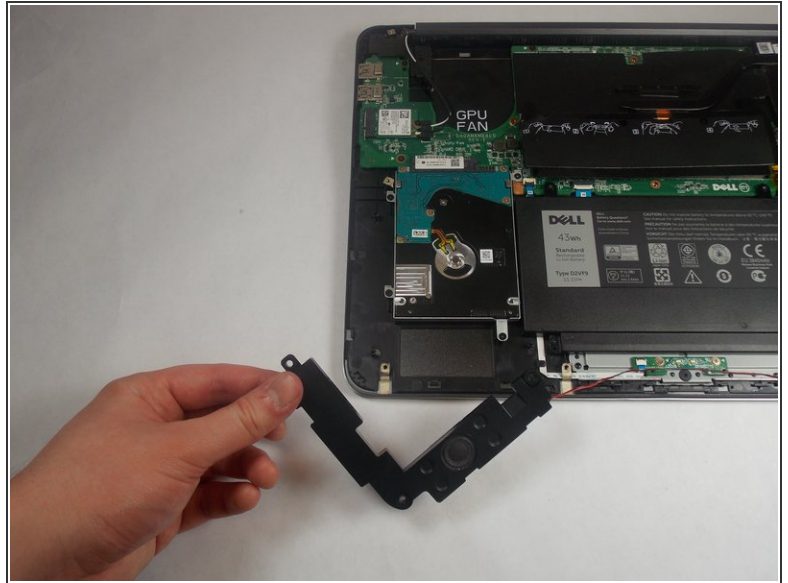
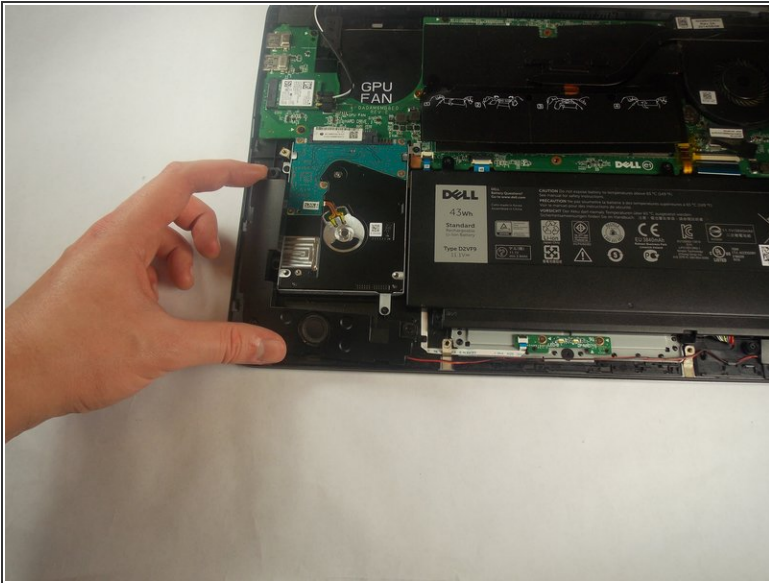
- Disconnect the white and black cables from the Wifi-Card.
- ⓘ Make a note of which wire goes where for reconnecting them to the replacement card.

Step 12 — Speakers



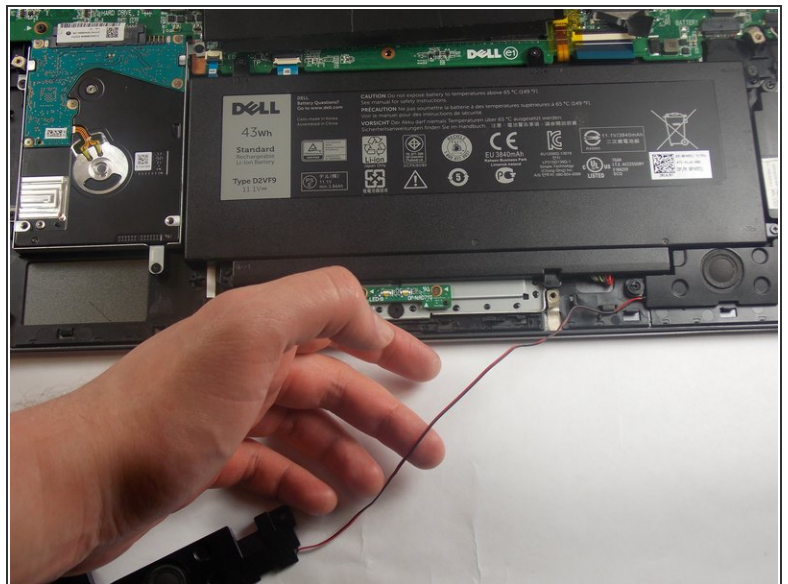
- Orient the computer so that the hinge for the display facing away from you.
- Start removing the speaker on the left by pushing the speaker in the direction of the tick mark on the 2 outer pegs, then upwards
- ⓘ The tick marks on the two marked pegs should indicate the speaker needs to be pushed towards the center of the front of the chassis.

Step 13



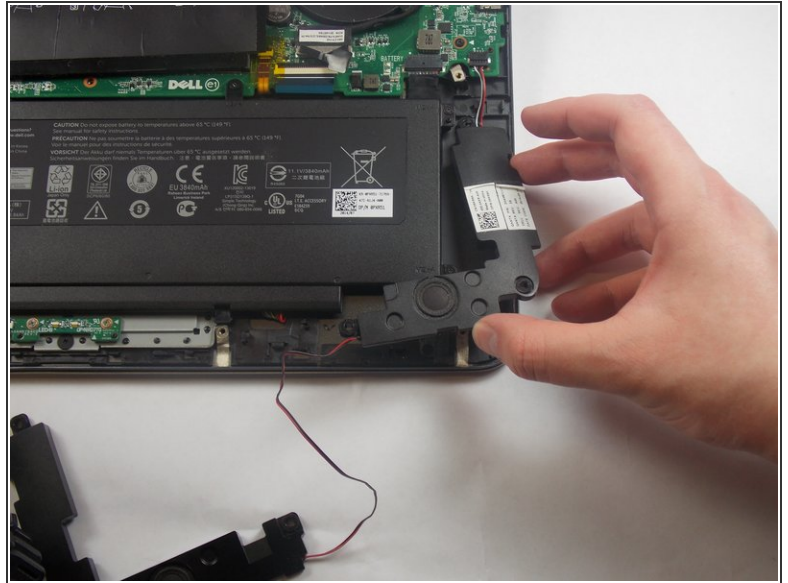
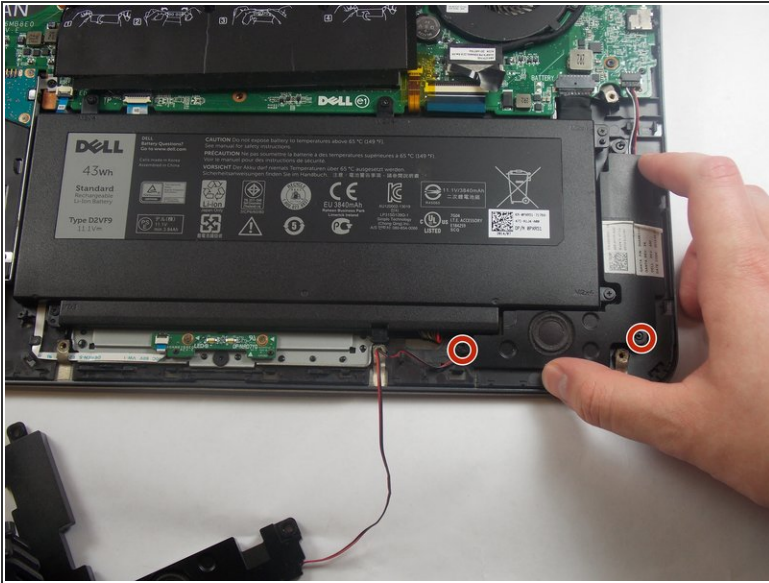
- Remove the left speaker by pushing the speaker in the direction of the tick mark on the center peg, then upwards
- ⓘ The tick mark should indicate towards the middle of the back of the chassis.

Step 14



- Remove the wire connecting the left speaker to the right speaker.
- ⓘ The wire is secured by small notches, be careful not to break these.

Step 15



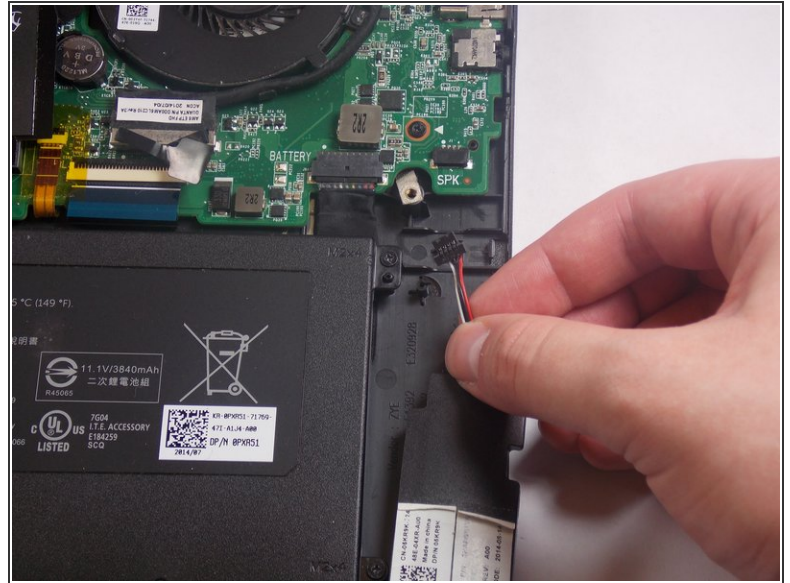
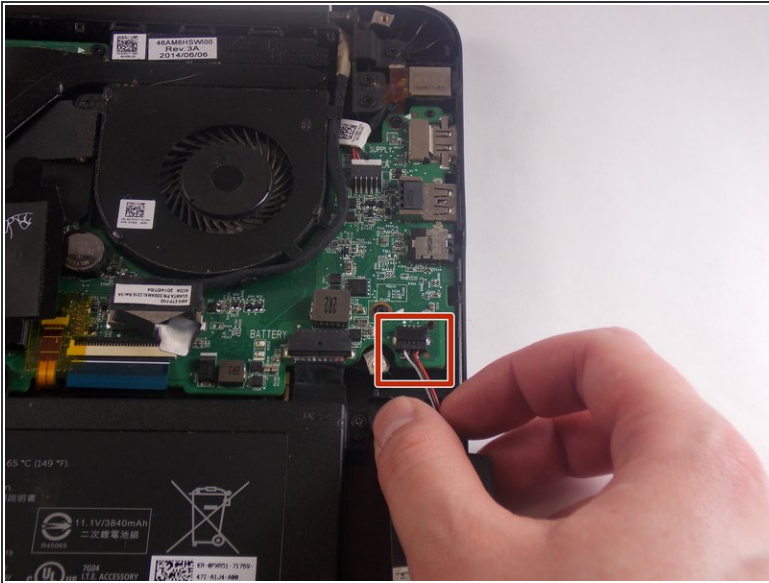
- Start removing the right speaker by pushing the speaker in the direction of the tick marks on the 2 pegs closest to the front of the device, and then upwards.
- ⓘ These tick marks should indicate towards the middle of the back of the chassis.

Step 16



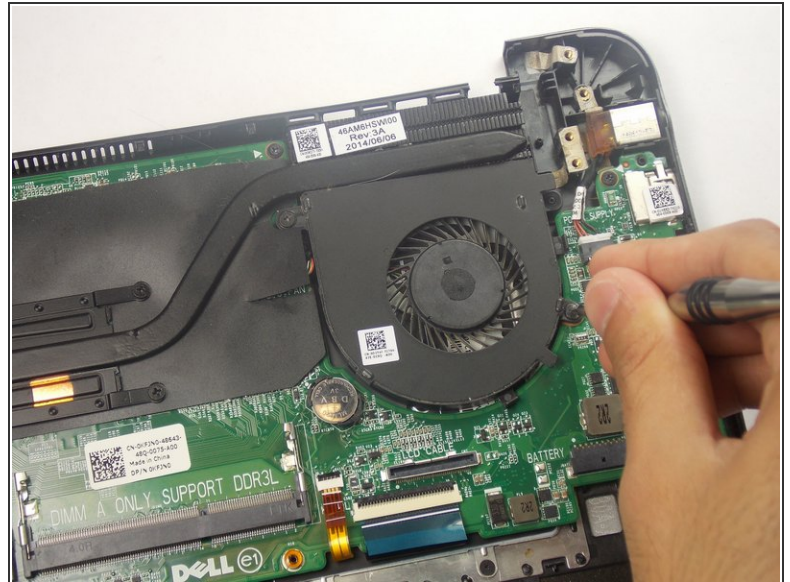
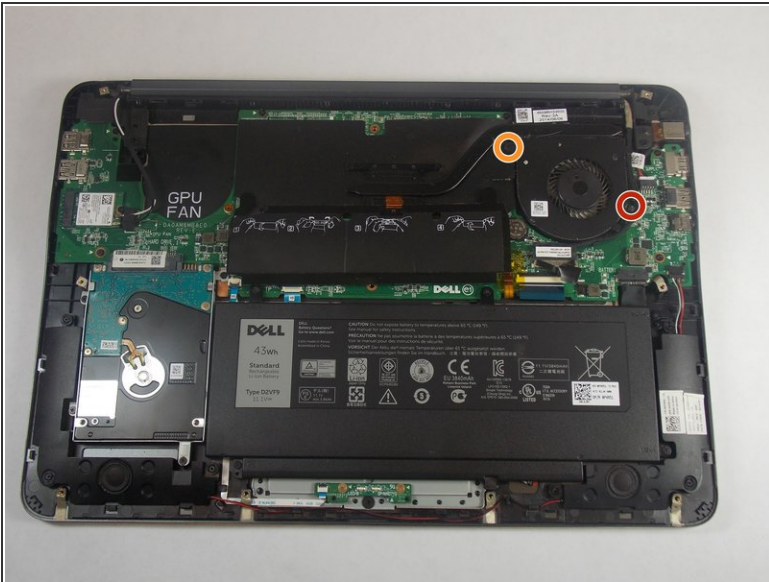
- Remove the right speaker by pushing in the direction of the tick mark on the final peg, and then upwards.
- ⓘ This tick mark should point towards the center of the right side of the chassis.

Step 17



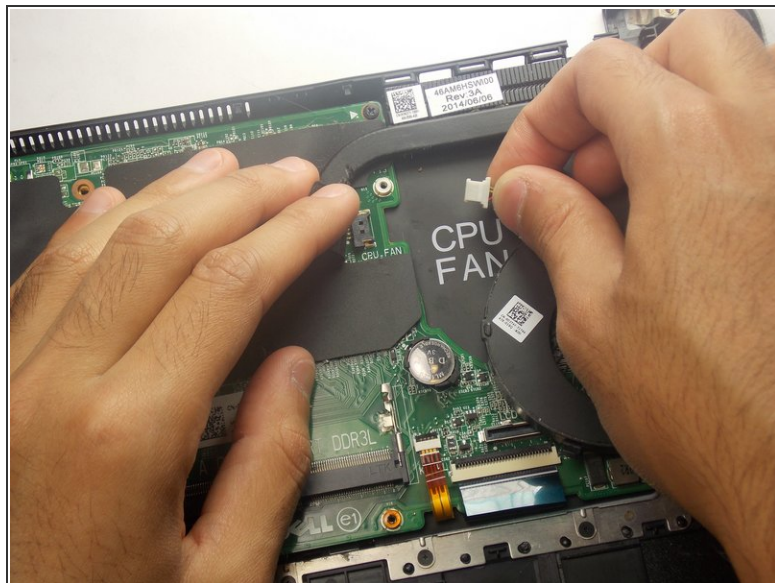
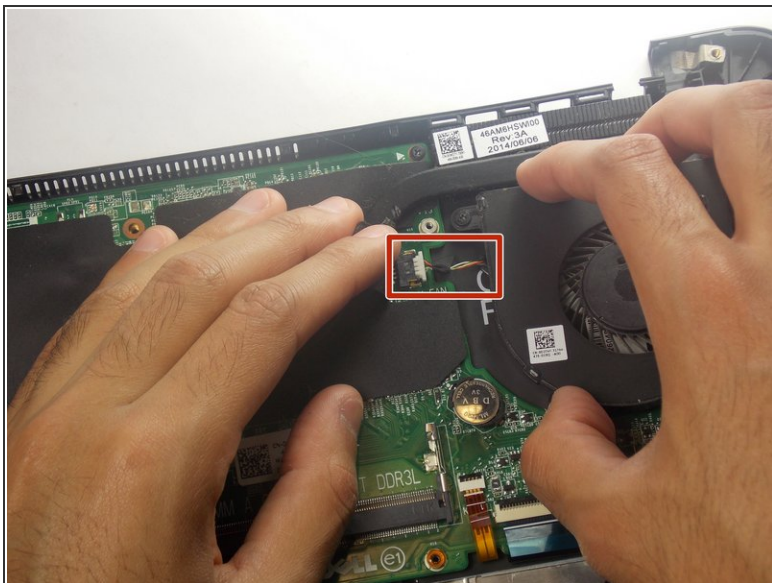
- Remove the cable connecting the right speaker to the motherboard by pulling towards the front of the device.

Step 18 — CPU Fan



- Remove the two 5.0 mm-long Philips #0 screws from the fan.
- The screw marked in orange will remain captive to the fan.

Step 19



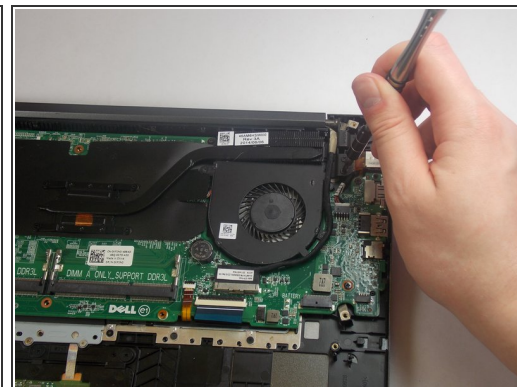
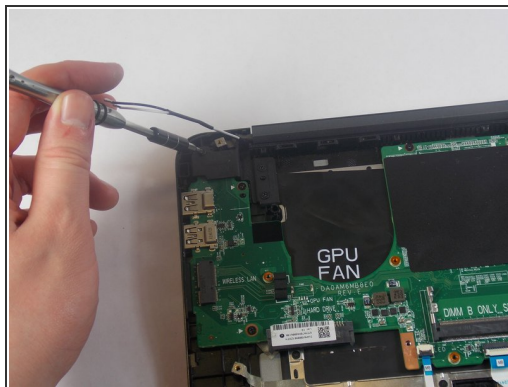
- Disconnect the wire that connects the fan to the motherboard. This can be found under the flap directly to the left of the fan.

Step 20



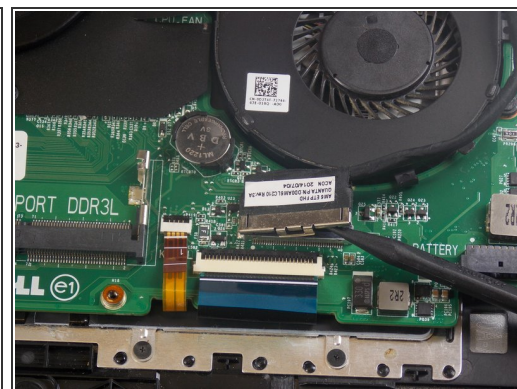
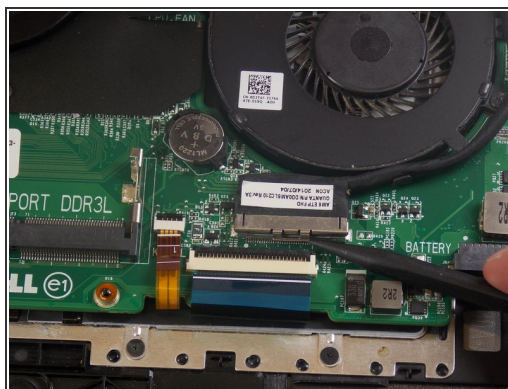
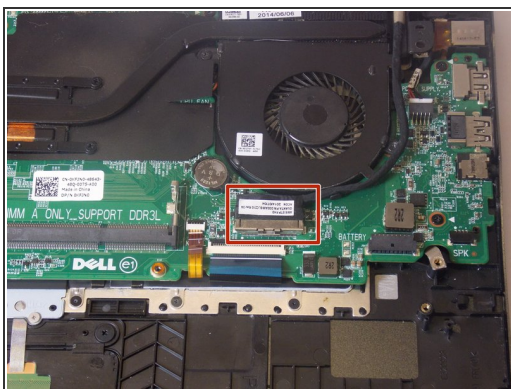
- Lift the fan out of the chassis.

Step 21 — LCD Assembly



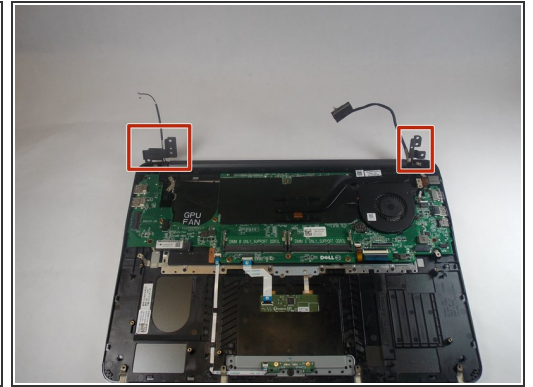
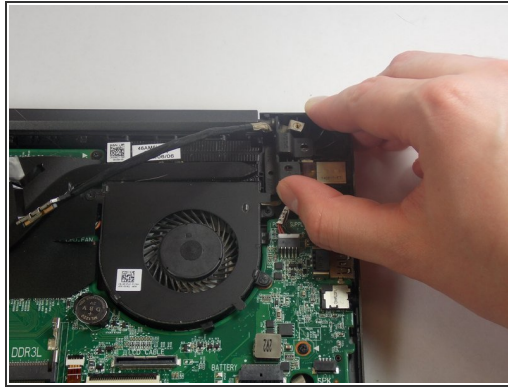
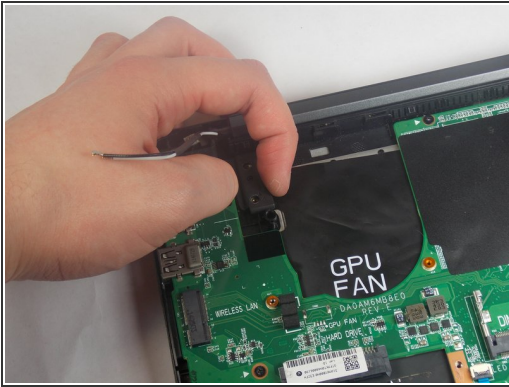
- Remove the six 7.0 mm-long Philips #0 screws that mount the hinges.

Step 22



- Use a spudger to unlatch and unplug the display cable.
- ❗ There will be a notch on the side of the connector.

Step 23



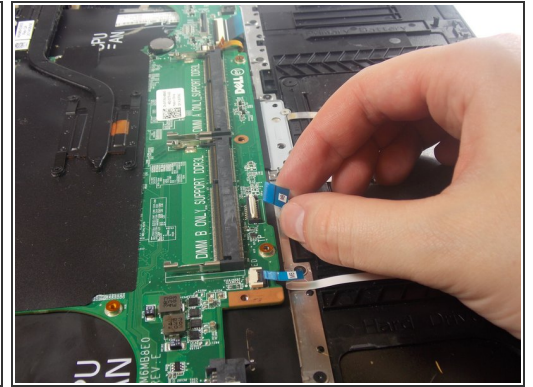
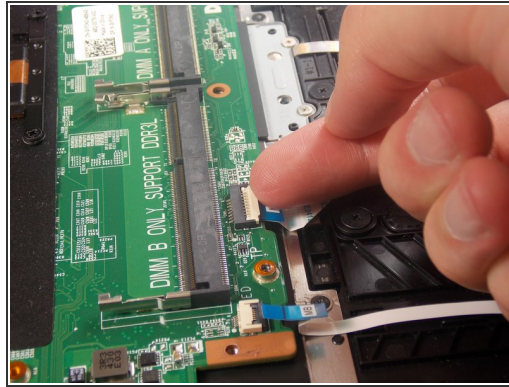
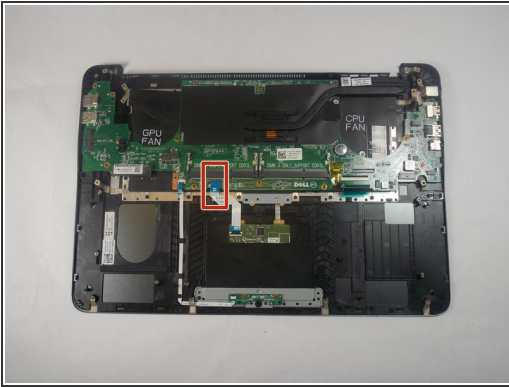
- Raise the left and right hinges.

Step 24



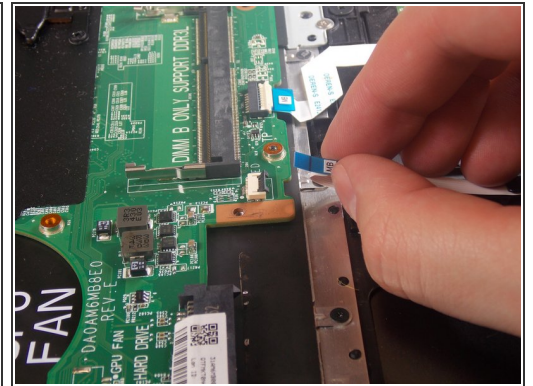
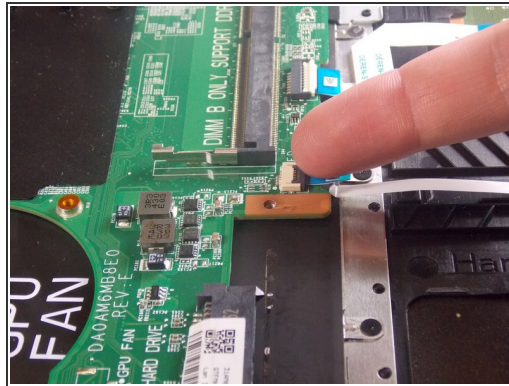
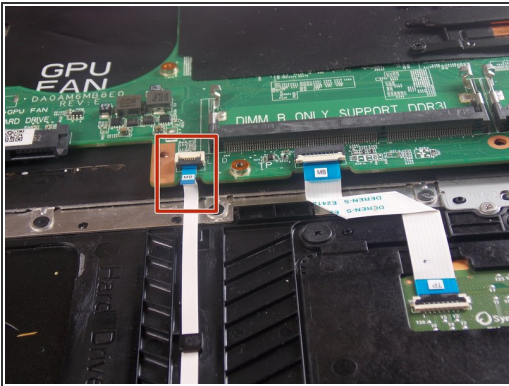
- Remove the LCD display assembly from the laptop.

Step 25 — Motherboard



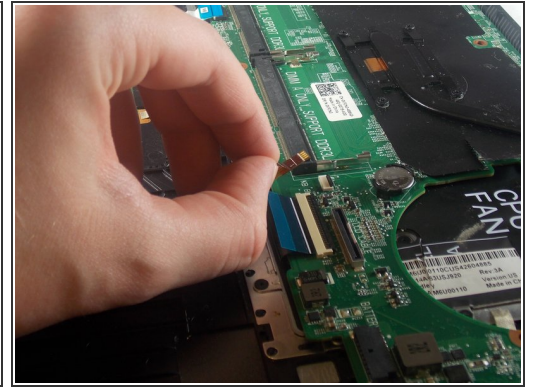
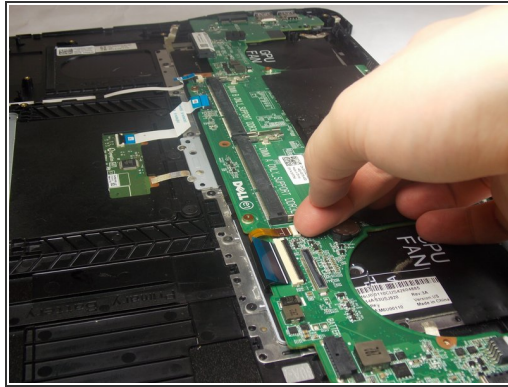
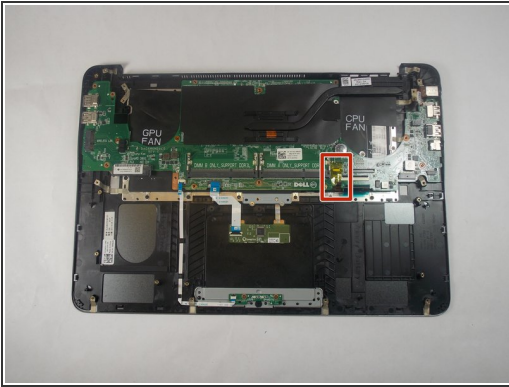
- Unlatch the ribbon cable by pulling the white release up.
 - ❗ If this proves to be difficult using your fingers, try a plastic spudger.
- Hold the blue flap and pull to unplug the cable.

Step 26



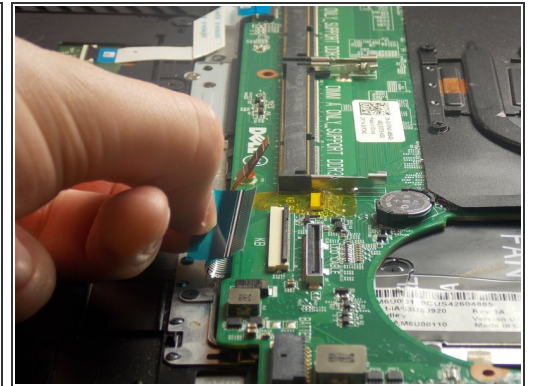
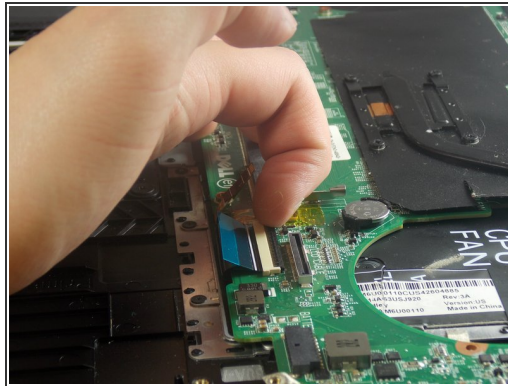
- Unlatch black release on the ribbon cable.
- Hold the blue flap to unplug the cable.

Step 27



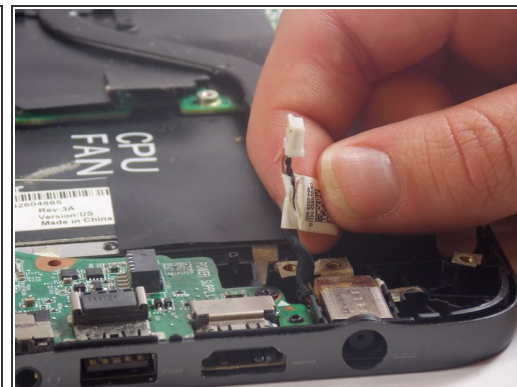
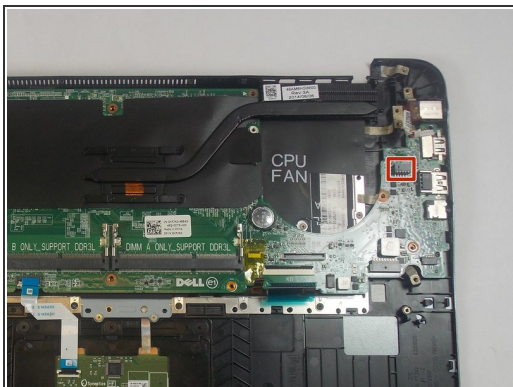
- Unlatch the ribbon cable by pulling the black release up.
- ❗ Unlike the others, this release is found at the back.
- Hold the flap and unplug the cable.

Step 28



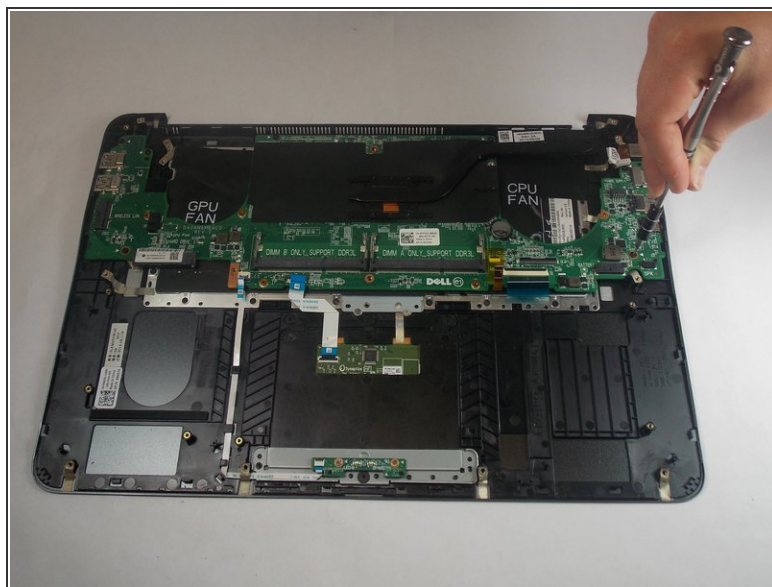
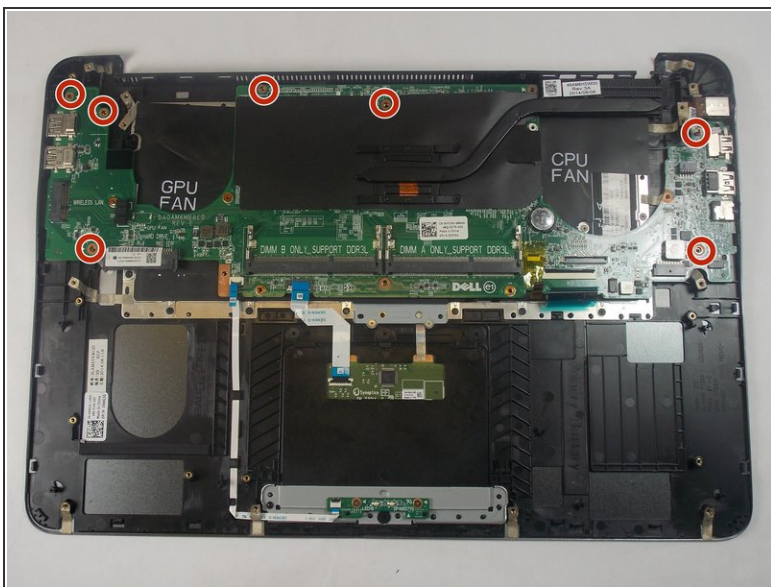
- Unlatch the ribbon cable by pulling the black release up.
- ❗ Unlike the others this release is found at back.
- Hold the blue flap and unplug the cable.

Step 29



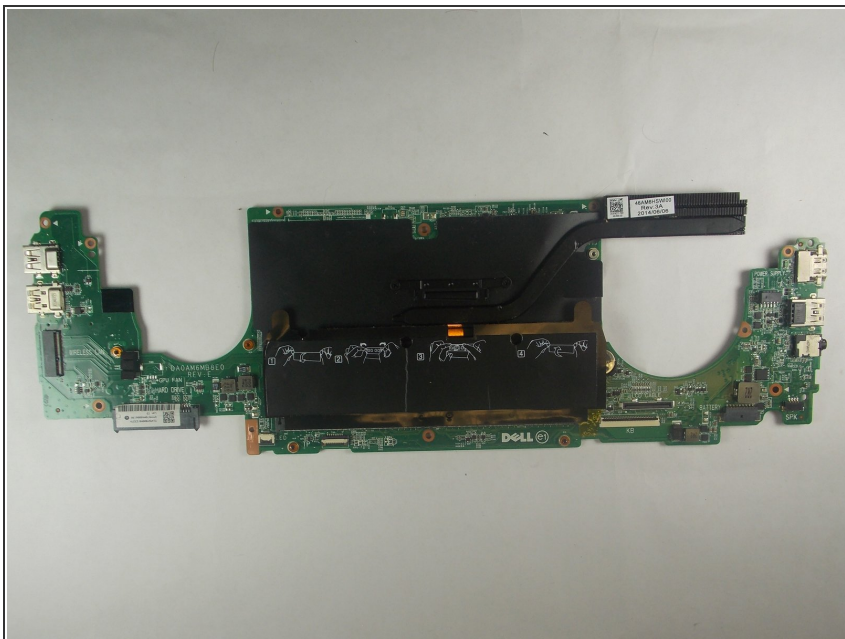
- Unplug the DC jack cable.

Step 30



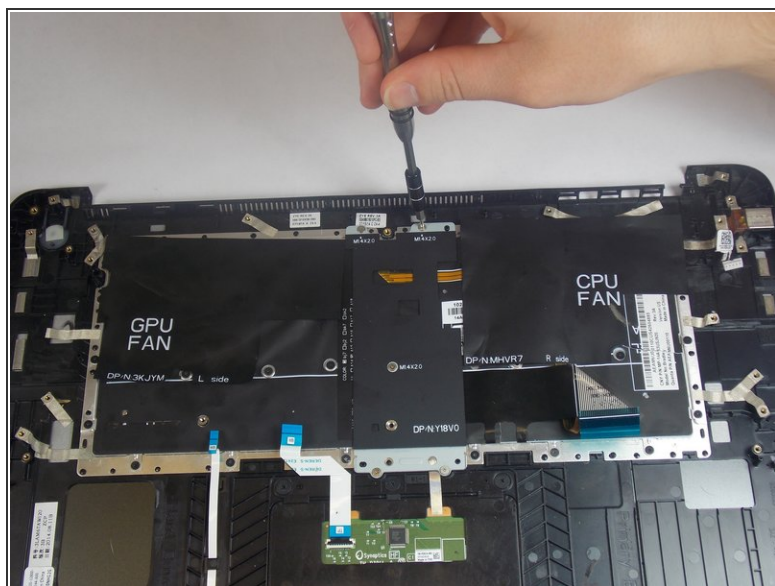
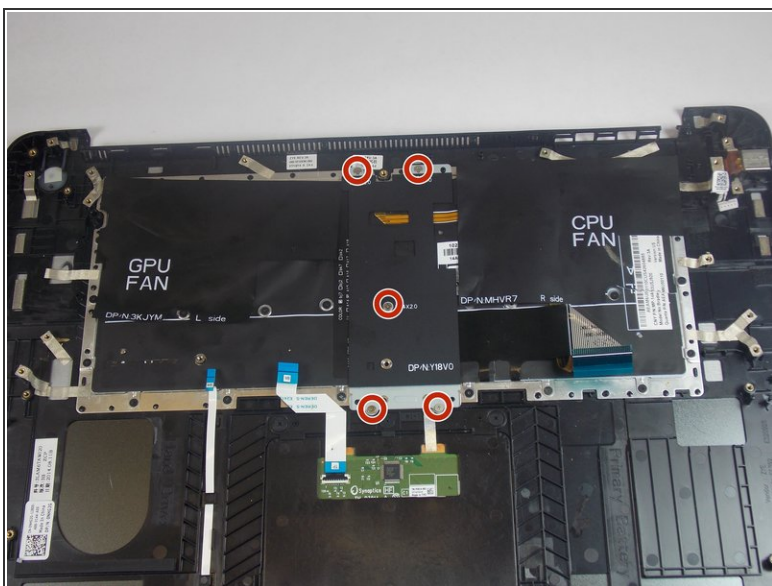
- Remove the seven 3.0 mm-long Philips #0 screws that secure the motherboard.

Step 31



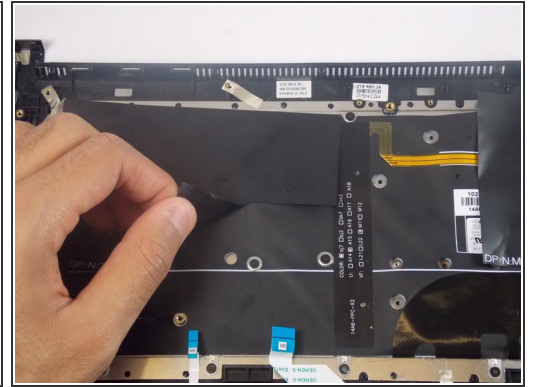
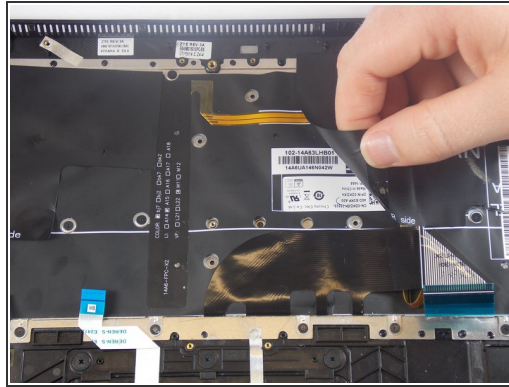
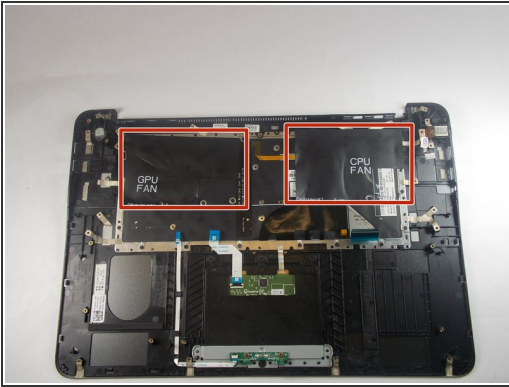
- Remove the motherboard from the laptop.

Step 32 — Keyboard



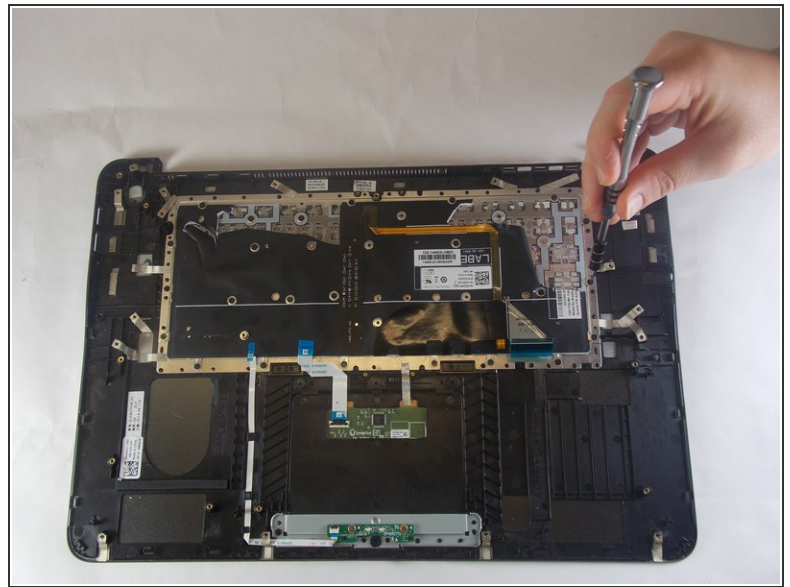
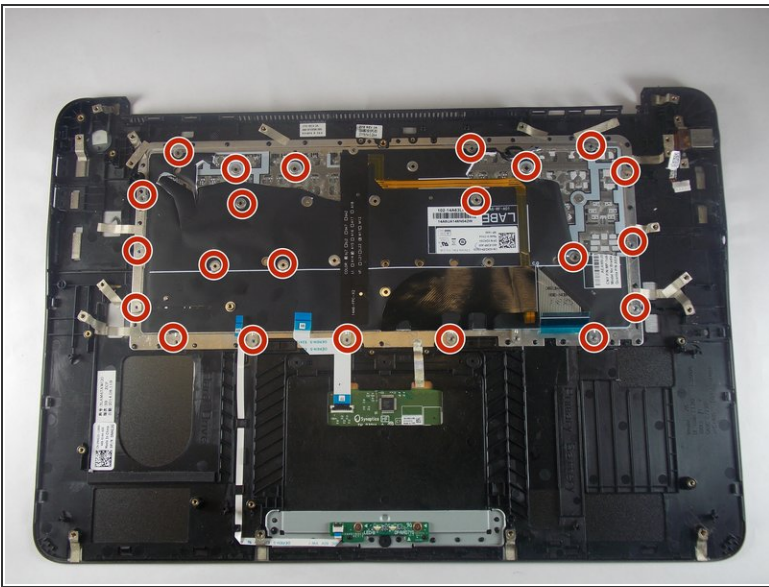
- Remove the five 2.0 mm-long Philips #00 screws from the metal back-plate.

Step 33



- Peel away the two plastic covers marked GPU fan and CPU fan.
- ❗ If never previously removed, these covers should be removed very gently so as to not tear the plastic underneath.

Step 34



- Remove the twenty-two 2.0 mm-long Philips #00 screws that connect the keyboard to the chassis.

Step 35



- Lift the the keyboard from the chassis.

To reassemble your device, follow these instructions in reverse order.