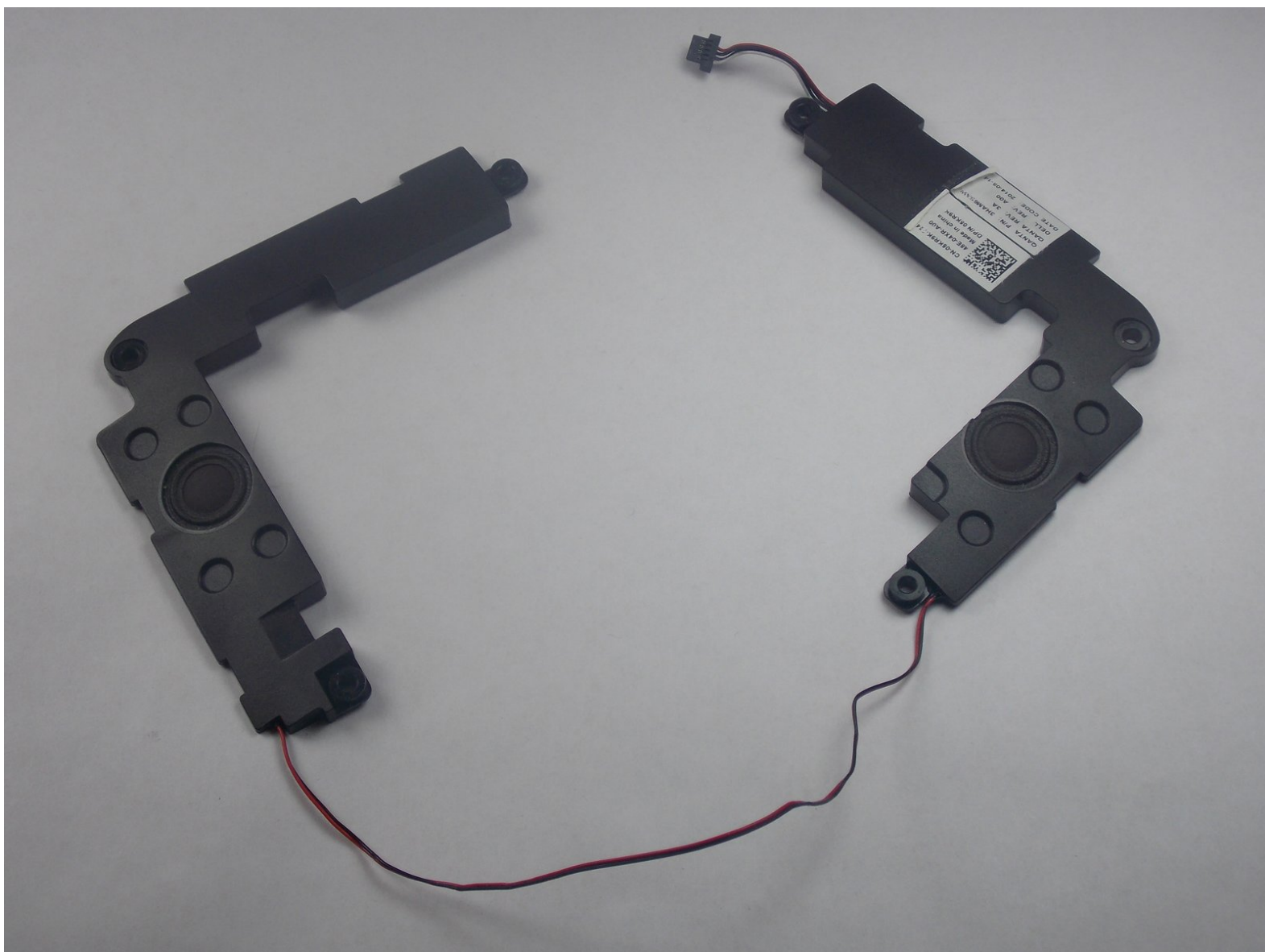




# Dell Inspiron 15-7547 Speakers Replacement

Issues with sound can be fixed by replacing your speakers.

Written By: Claro



---

## INTRODUCTION

The guide shows how to remove the speakers from the Dell Inspiron 15-7547.

---



### TOOLS:

- [Spudger](#) (1)
  - [Phillips #0 Screwdriver](#) (1)
-

## Step 1 — Bottom Cover



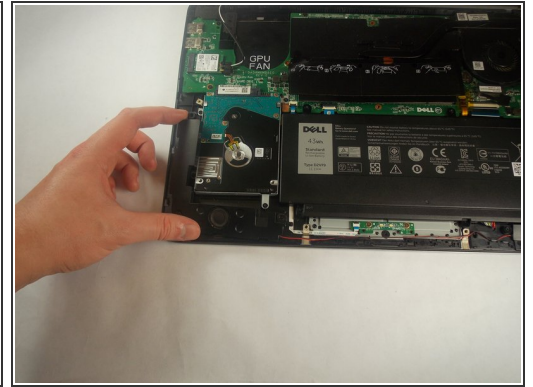
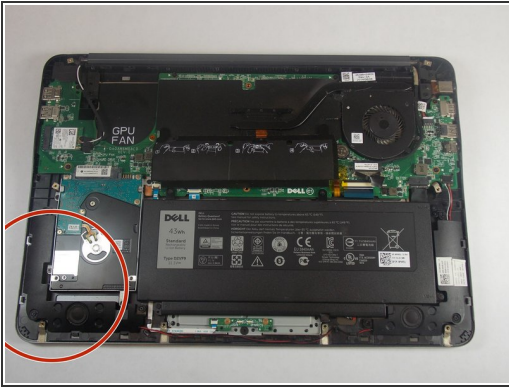
- ❗ Before you begin, be sure to turn off your laptop and unplug it from the outlet.
- Close the display and flip the laptop on its back.
- Loosen the ten 5.0 mm-long Phillips #0 screws.
  - The four screws marked with orange will remain captive to the cover.

## Step 2



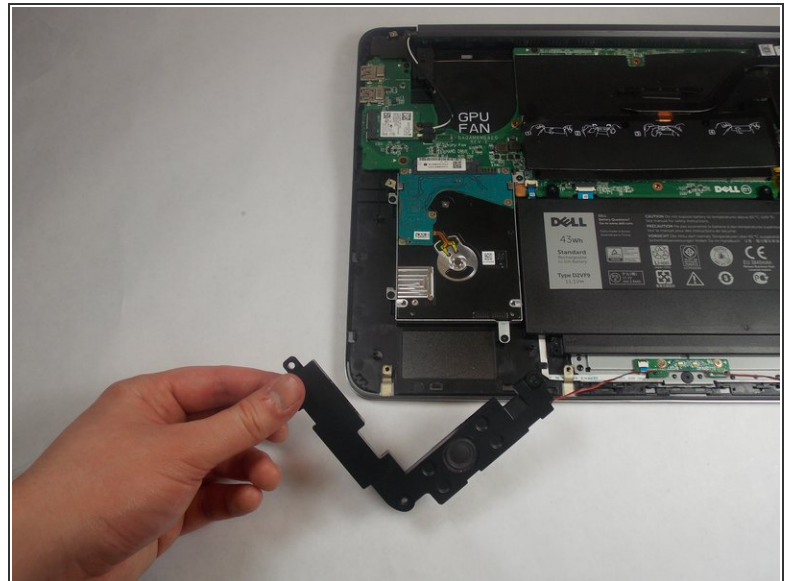
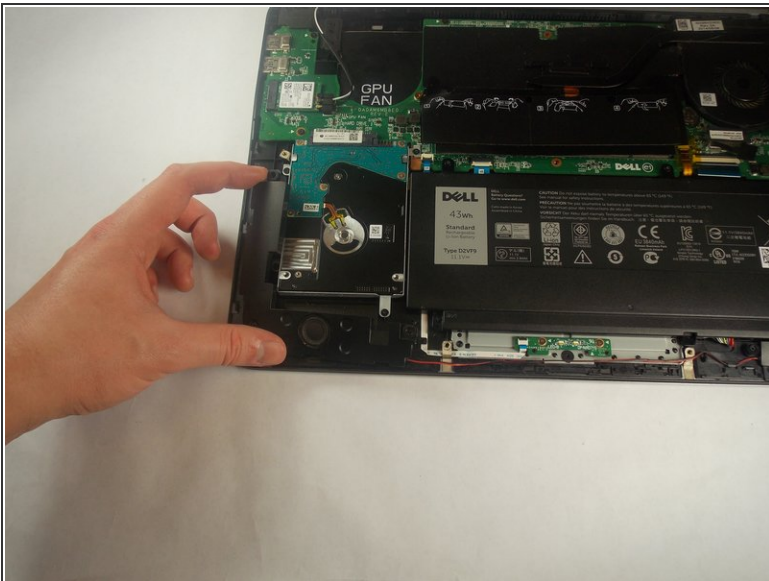
- Use a spudger to pry up and loosen the back cover.
- Remove the back cover.

## Step 3 — Speakers



- Orient the computer so that the hinge for the display facing away from you.
- Start removing the speaker on the left by pushing the speaker in the direction of the tick mark on the 2 outer pegs, then upwards
- ⓘ The tick marks on the two marked pegs should indicate the speaker needs to be pushed towards the center of the front of the chassis.

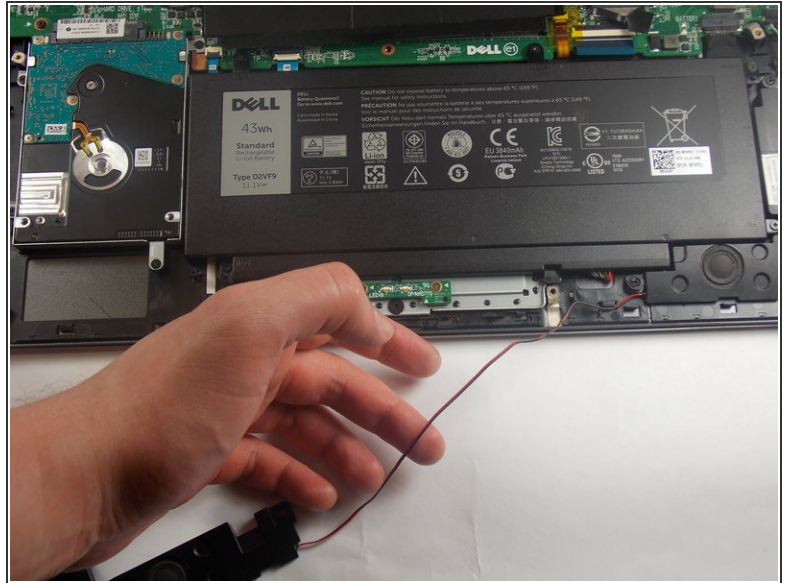
## Step 4



- Remove the left speaker by pushing the speaker in the direction of the tick mark on the center peg, then upwards
- ⓘ The tick mark should indicate towards the middle of the back of the chassis.

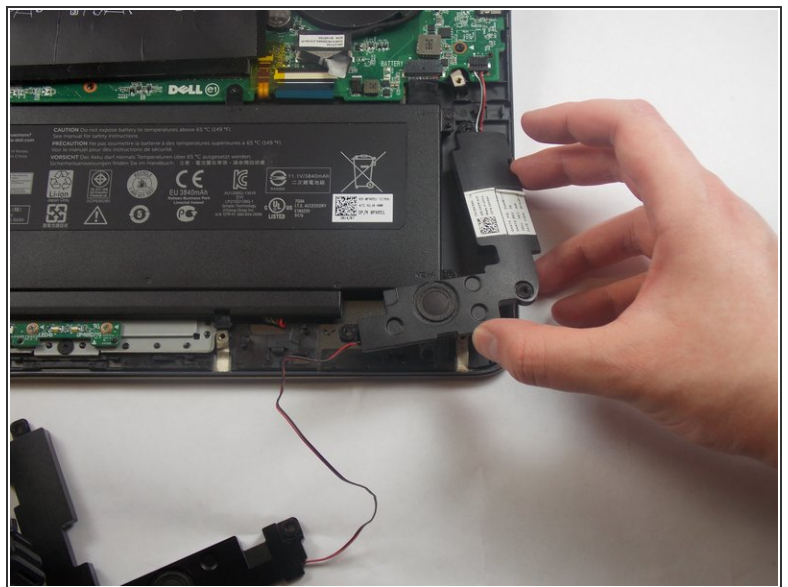
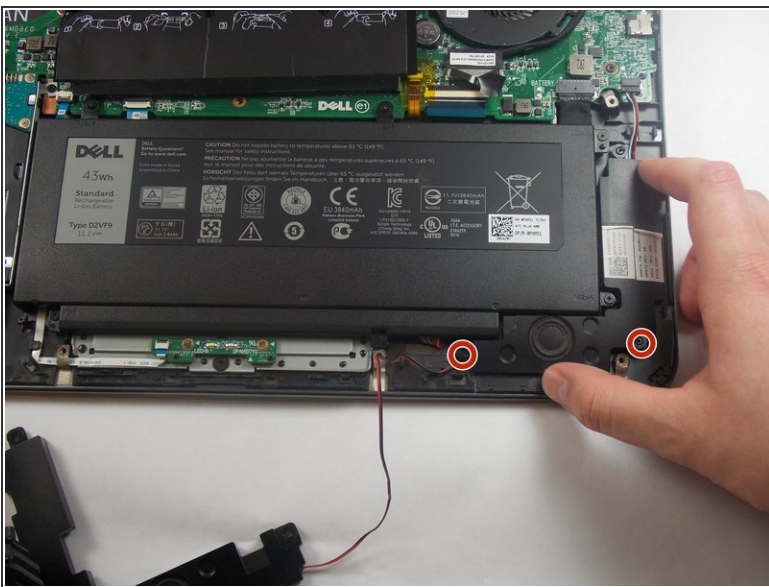


## Step 5



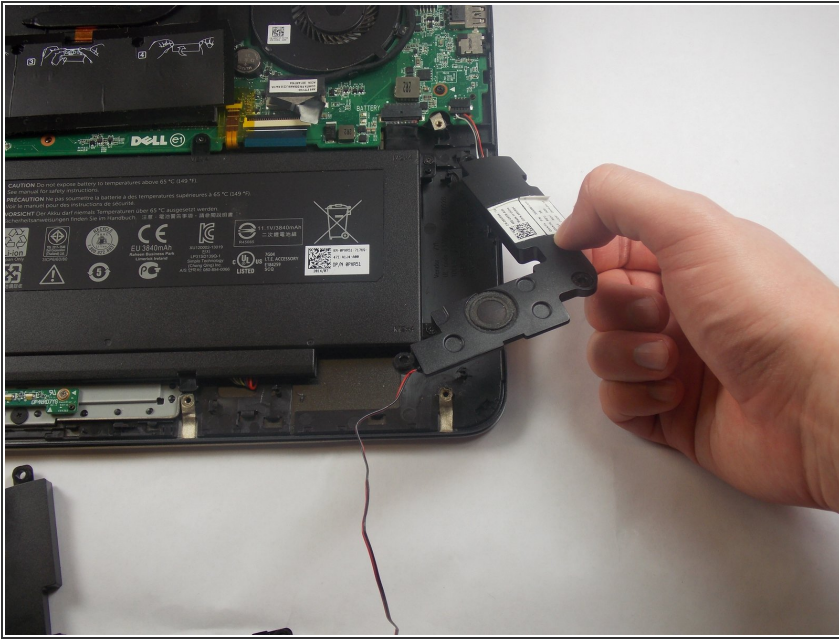
- Remove the wire connecting the left speaker to the right speaker.
- ⓘ The wire is secured by small notches, be careful not to break these.

## Step 6



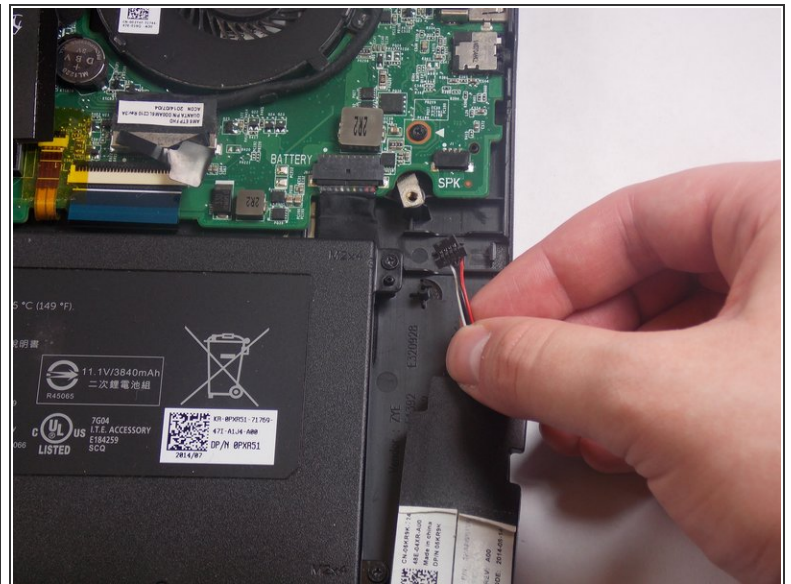
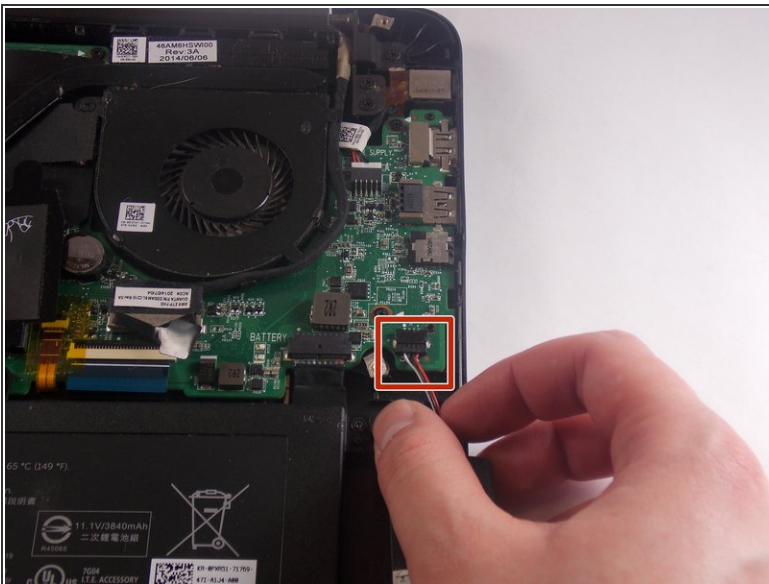
- Start removing the right speaker by pushing the speaker in the direction of the tick marks on the 2 pegs closest to the front of the device, and then upwards.
- ⓘ These tick marks should indicate towards the middle of the back of the chassis.

## Step 7



- Remove the right speaker by pushing in the direction of the tick mark on the final peg, and then upwards.
- ⓘ This tick mark should point towards the center of the right side of the chassis.

## Step 8



- Remove the cable connecting the right speaker to the motherboard by pulling towards the front of the device.

To reassemble your device, follow these instructions in reverse order.

This document was generated on 2020-11-28 06:56:20 AM (MST).

