



# HP 10 2101 Back Panel Replacement

Follow this guide to replace the HP 10 2101 J6F00UA back panel. This is the first step required for many other part replacements.

Written By: Bryce Harmsen



---

## INTRODUCTION

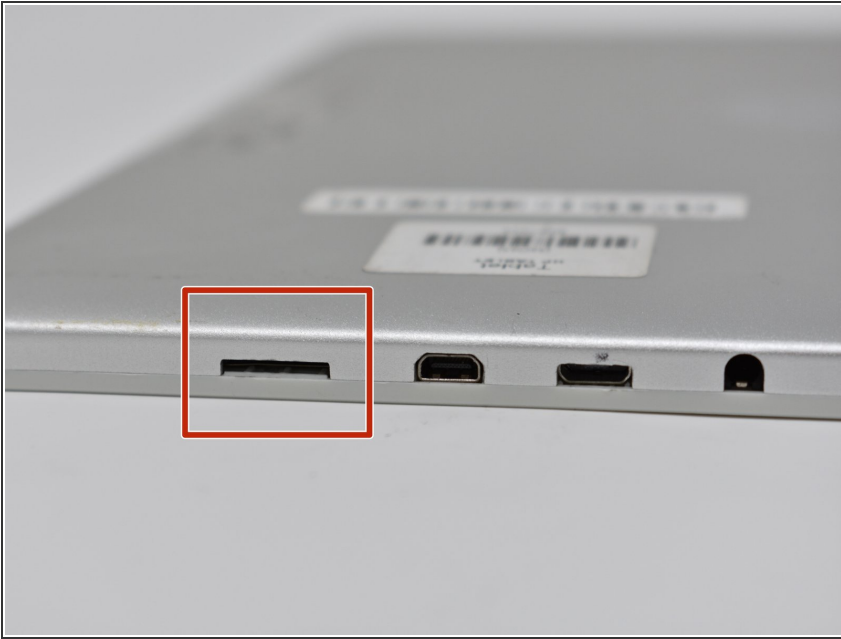
The back panel is attached to the rest of the device by internal clips. In this guide you will separate these clips with the smallest plastic opening tool. This guide requires prying plastic pieces apart, please be gentle and use plastic tools.



### TOOLS:

- [iFixit Opening Tools](#) (1)
-

## Step 1 — Back Panel



- Identify the SD card port.

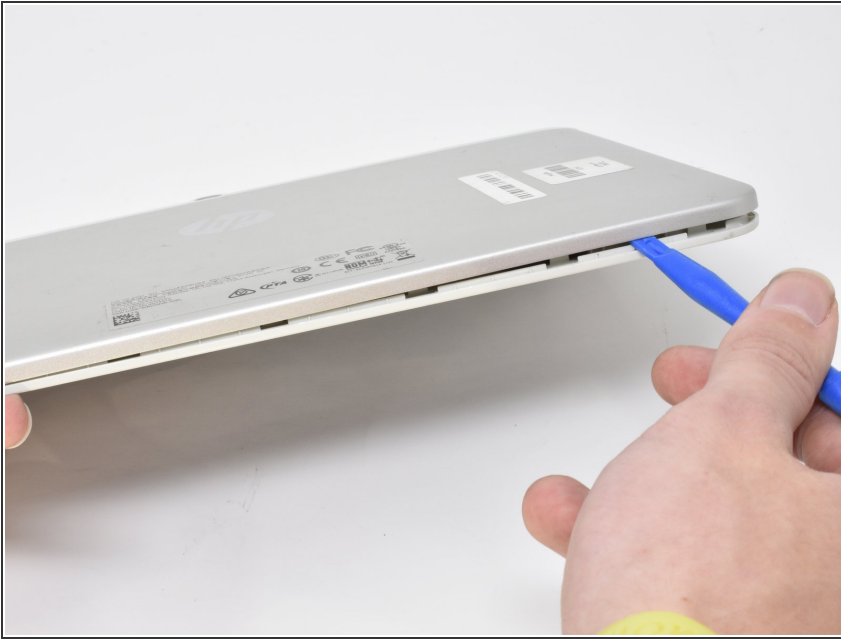
## Step 2



- Insert the smallest plastic opening tool into the SD card port. Gently pry until the back panel separates from the screen panel.

**⚠ Do not insert opening tool too far.**  
Avoid making contact with the metal inside the port.

## Step 3



- Slide the opening tool along the seam between the back panel and the screen panel, prying the panels apart as you move around the edges.

## Step 4



- Separate the back panel from the rest of the device.

To reassemble your device, follow these instructions in reverse order.