



# Nokia 3410 Teardown

Written By: Bryan





## TOOLS:

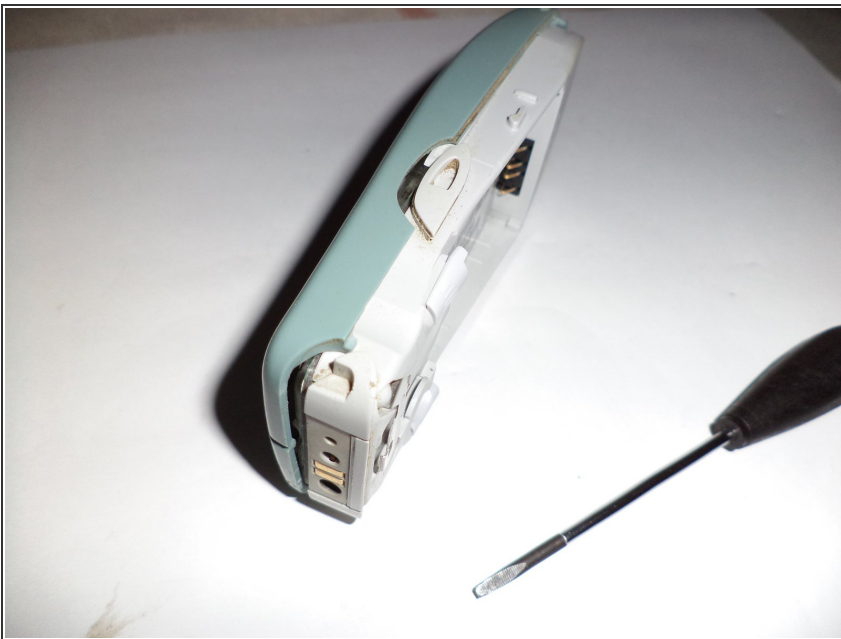
- [Flathead 3/32" or 2.5 mm Screwdriver](#) (1)
- [T6 Torx Screwdriver](#) (1)
- [iFixit Opening Tools](#) (1)

## Step 1 — Nokia 3410 Teardown



- Remove battery cover, battery and SIM Card.

## Step 2



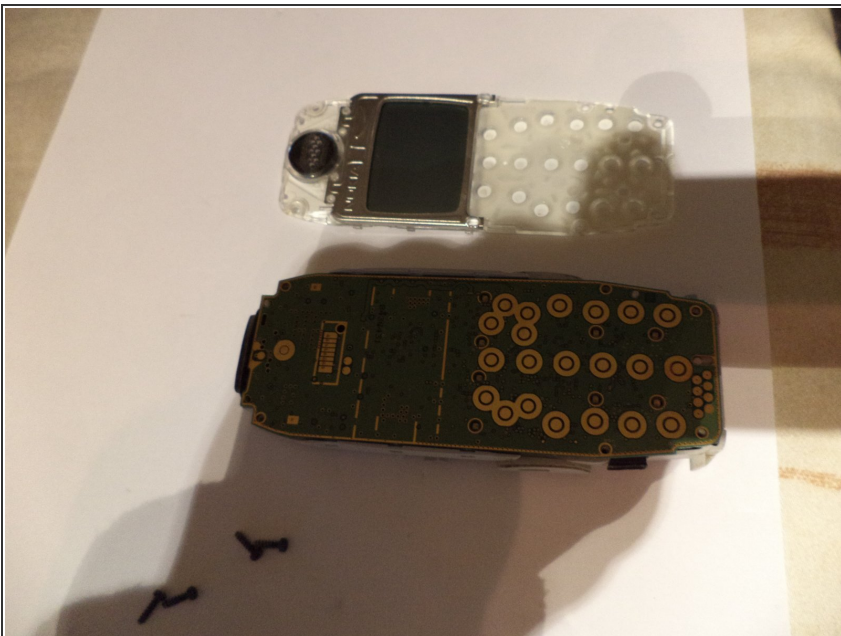
- Remove the front cover with a small flathead screwdriver or case opener.

### Step 3



- Remove these screws.

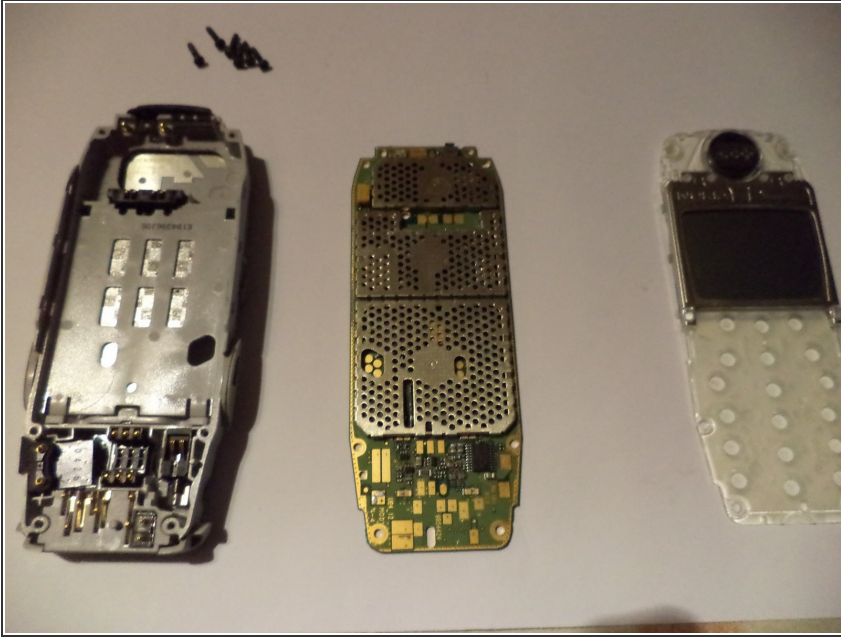
### Step 4



- Now you can pull this part off.

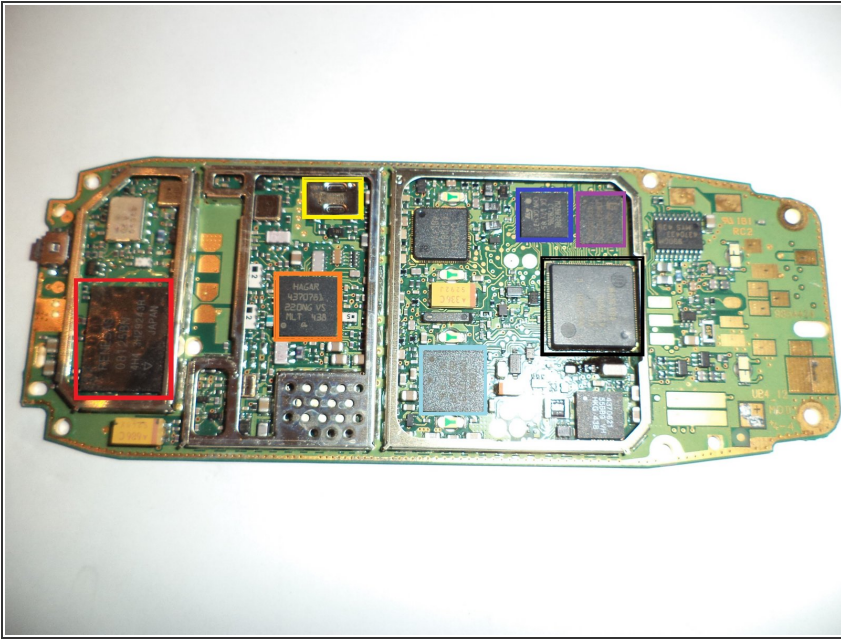


## Step 5



- Now you can pull off the PCB.

## Step 6



- To see the IC's on the PCB, we remove the EMI Shields with a small flathead screwdriver.
- Renesas 08125BN Power Amplifier
- HAGAR 4370781 Signaling Processor
- Kyocera KEU27260
- CCONT NMP70719 Power Management IC
- ST M28W320ECT Flash Memory
- EMLSI EM641FU16E CMOS Static RAM
- Texas Instruments MAD2WDI C GSM Baseband Processor

## Step 7



- Finished!

To reassemble your device, follow these instructions in reverse order.