



# Samsung SGH-X450 Teardown

Written By: Bryan





## TOOLS:

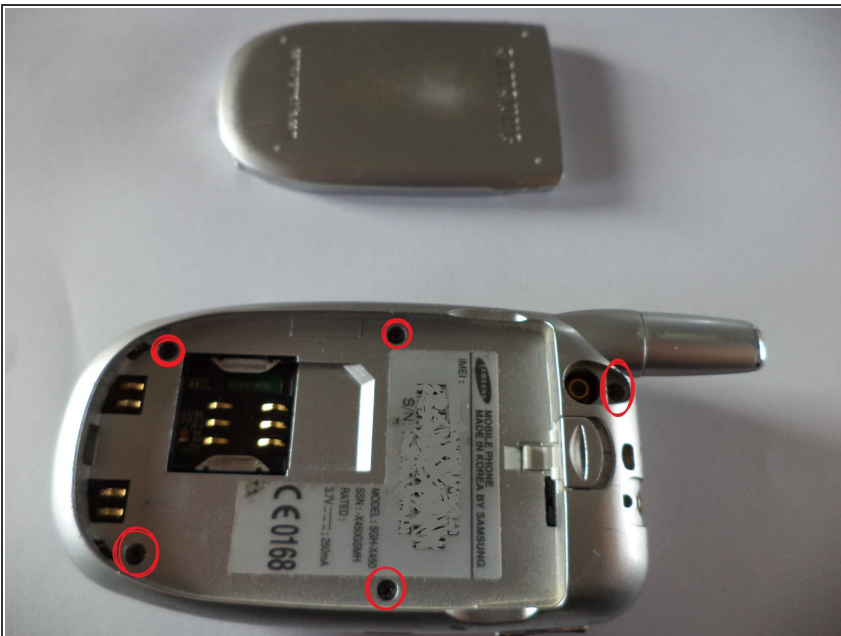
- [Phillips #0 Screwdriver](#) (1)
- [Flathead 3/32" or 2.5 mm Screwdriver](#) (1)
- [iFixit Opening Tools](#) (1)

## Step 1 — Samsung SGH-X450 Teardown



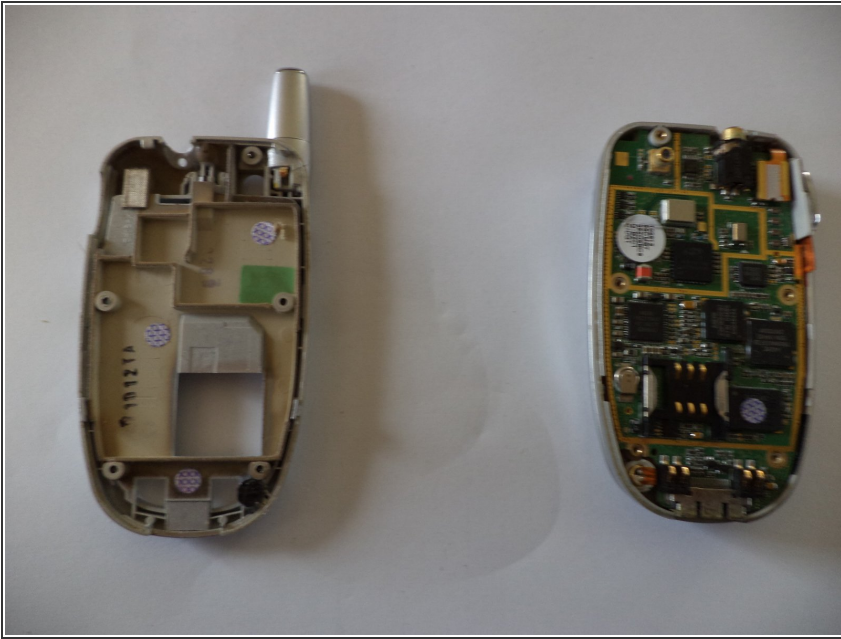
- Take out the battery and SIM Card.

## Step 2



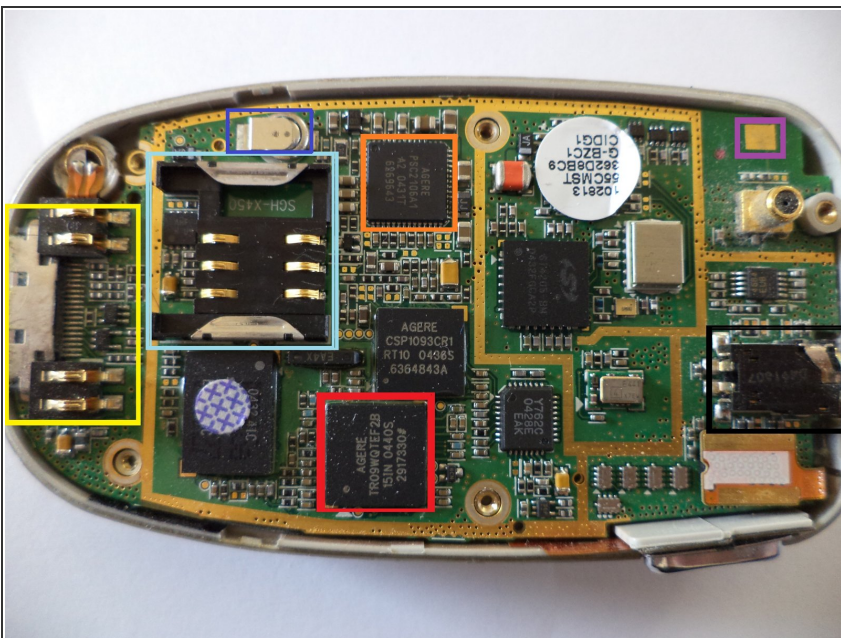
- Remove these screws.

## Step 3



- If the screws are removed, you can take the case off with your fingers or a small flathead screwdriver

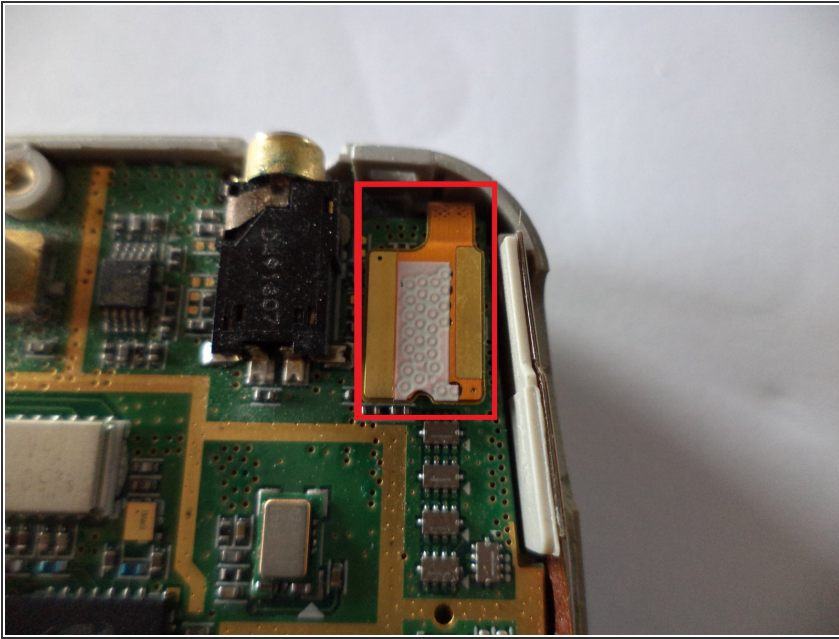
## Step 4



- Now you see the PCB
- Agere TR09WQTEF2B Processor
- Agere PSC2106 Power Management IC
- Battery contacts and power supply connector
- SIM Card Slot
- Back-Up battery
- Antenna connector
- 2,5mm Headphone Jack



## Step 5



- ⚠ LCD Display cable, you can release this connector with a small flathead screwdriver
- Be careful here, You can break the flatcable!

## Step 6



- To take the LCD display out of the case, click the upper case open with a small flathead screwdriver or case opener. Under the two pads under the LCD Display are 2 screws.
- ⚠ Be also careful here, go not to far with the screwdriver so you can not damage the LCD display.

## Step 7



- Now you see this.
- If you want to remove the LCD display, lift the PCB of the LCD display up with a small flathead screwdriver.

## Step 8



- Finished!

To reassemble your device, follow these instructions in reverse order.