



BLU Vivo XL2 LCD Screen Replacement

The procedures were very similar to replacing a LCD screen for a Samsung S5.

Written By: [nickzhao2010](#)





TOOLS:

- [Heat Gun](#) (1)
- [Spudger](#) (1)
- [Phillips #0 Screwdriver](#) (1)
- [iFixit Opening Tool](#) (1)
- [iSesamo Opening Tool](#) (1)



PARTS:

- [New LCD screen](#) (1)

Step 1 — Removing the back cover



- locate the edge the phone, to find a easy entre point, then using a lsesamo opening tool to open the four sides, and removed back cover.

Step 2 — Removing metal bracket



- After removed the Back Plastic Cover, a metal bracket is covering the battery connector and the LCD screen connector. Removed all the screws in the metal bracket, then removed the Metal Bracket. Now, disconnect the two connectors of the LCD and Battery.

Step 3 — Disconnect LCD screen and Battery Connector



- After removed the metal bracket, you will see the two connectors, disconnect them

Step 4 — Lifting up the battery, removed both connectors



- Here is tough part of all, the battery had two stripe of adhesive at the bottom to secured it down. Just like the Iphone 6, you can carefully pull the adhesive stripe out or using tool to lift up the battery on the side where the connector of the battery located. After lift the battery up, disconnect the both connectors.

Step 5 — Separate LCD Screen



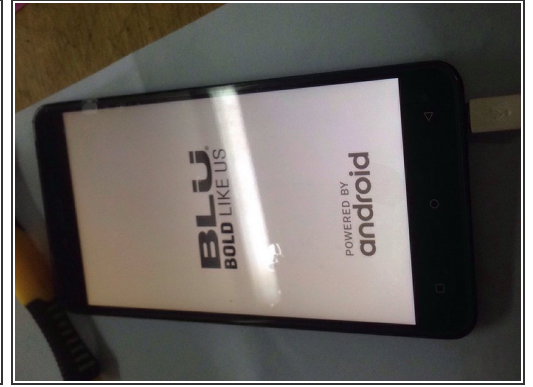
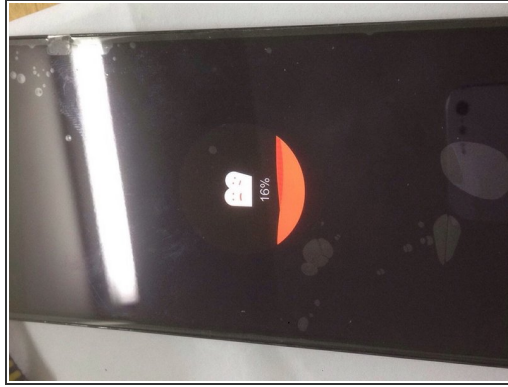
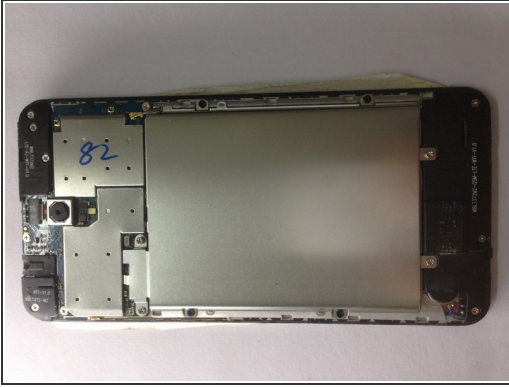
- Using a heat gun or other tool to apply some heat to the screen, making the glue softening and using tool to separate the screen. Be carefully at the bottom where the flex connection.

Step 6 — install new LCD Screen



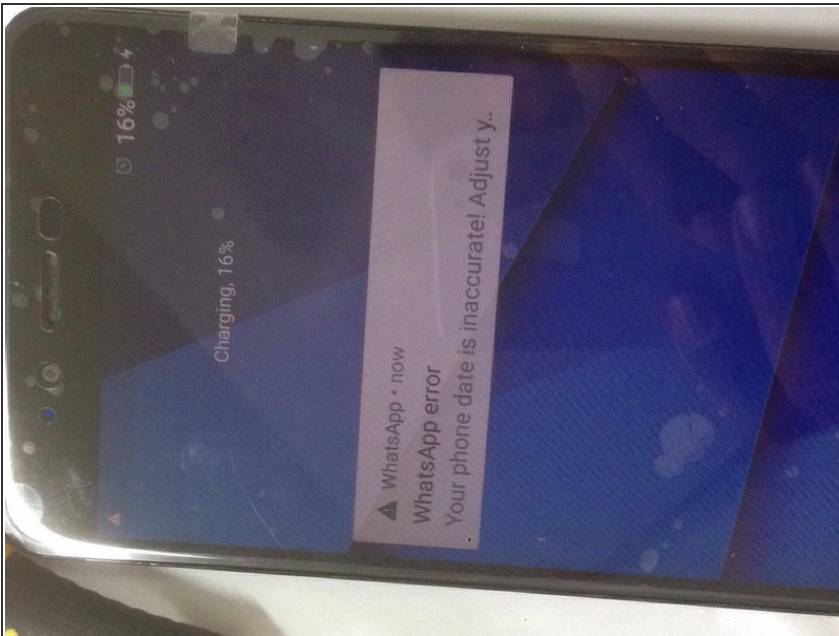
- After the damaged LCD screen were removed, install the new LCD screen, remember the flex and connector need to go through the small opening below the battery. Connecting back both connectors, and secure the metal bracket on top of the battery.

Step 7 — Test new LCD Screen and Charging Port



- After put back all the screws in the Metal bracket, time to test the new LCD Screen. Connecting the charger, to see the charging port is functional, then do a power on to verified the LCD Screen working or not. If both working as they should, job almost done. Now put back the Back Plastic Cover and we call it done.

Step 8 — A working Blu VIVO XL 2 phone!!



- A working Blu VIVO XL 2 phone!!

To reassemble your device, follow these instructions in reverse order.