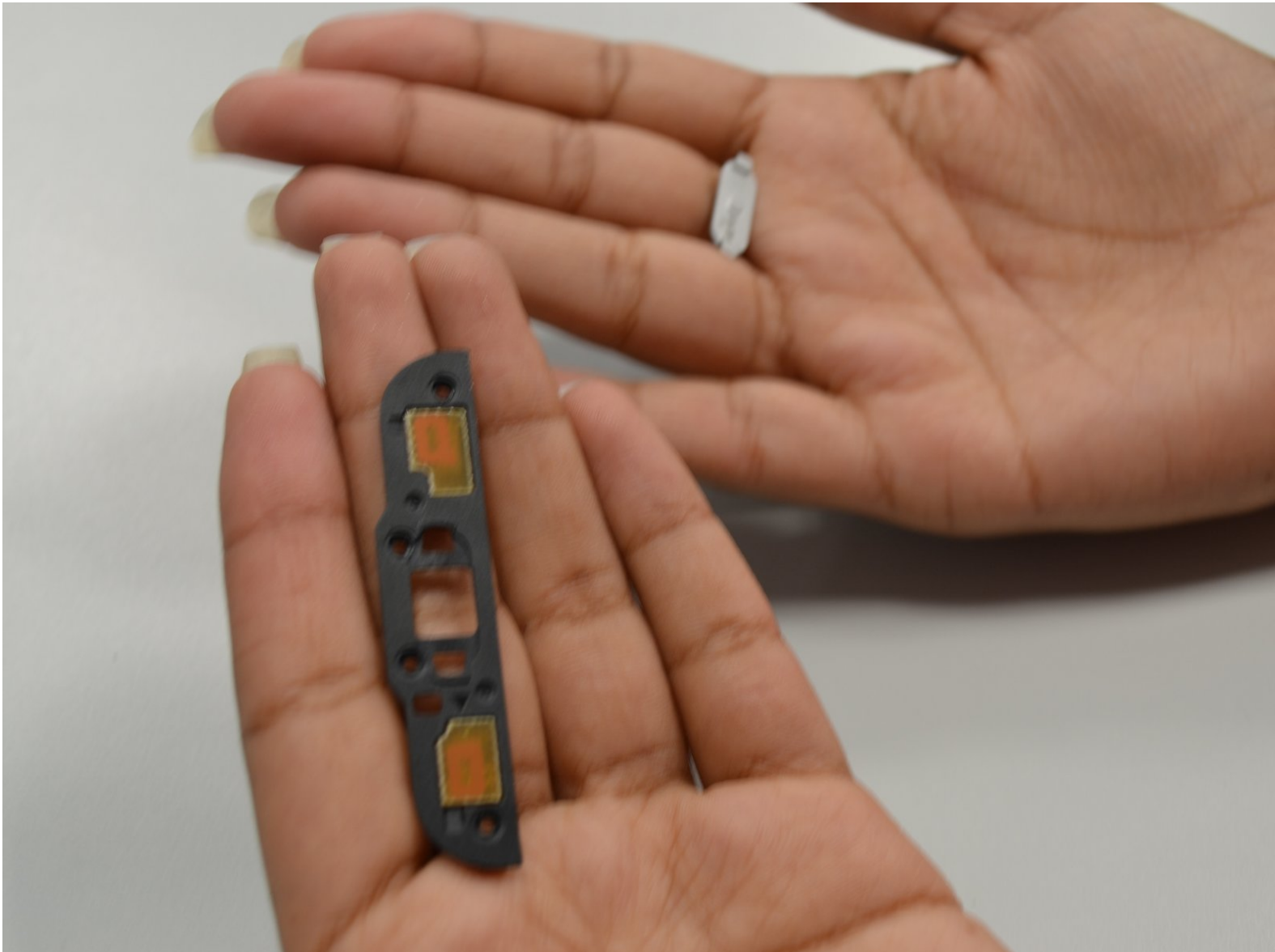




Samsung Galaxy Amp 2 Home Button Replacement

Disassemble a Samsung Galaxy Amp 2 in order to replace a faulty home button.

Written By: Cory Nickolatos



INTRODUCTION

Disassemble a Samsung Galaxy Amp 2 in order to replace a faulty home button. You may want to replace the home button if it is damaged or unresponsive. The most time consuming step is removing the screen, which is a bit tricky. You will need angled tweezers, four plastic opening tools, and a heat gun or blow dryer. You will also need a PH000 screwdriver in order to unscrew the motherboard, which holds the home button in place.



TOOLS:

- [iFixit Opening Tools](#) (1)
- [Heat Gun](#) (1)
- [Phillips #000 Screwdriver](#) (1)
- [Tweezers - Pro ESD Angle](#) (1)
- [Suction Handle](#) (1)
- [Spudger](#) (1)



PARTS:

- [Galaxy Amp 2 screen](#) (1)
- [Galaxy Amp 2 Home Button](#) (1)

SM-J120AZ

Difficult to find. Probably available used.

Step 1 — Battery



- Insert your fingernail or an opening tool into the divot on the side of the phone. The divot is located to the left of the rear-facing camera.
- Lift upwards and gently pry the rear panel off of the phone.

Step 2



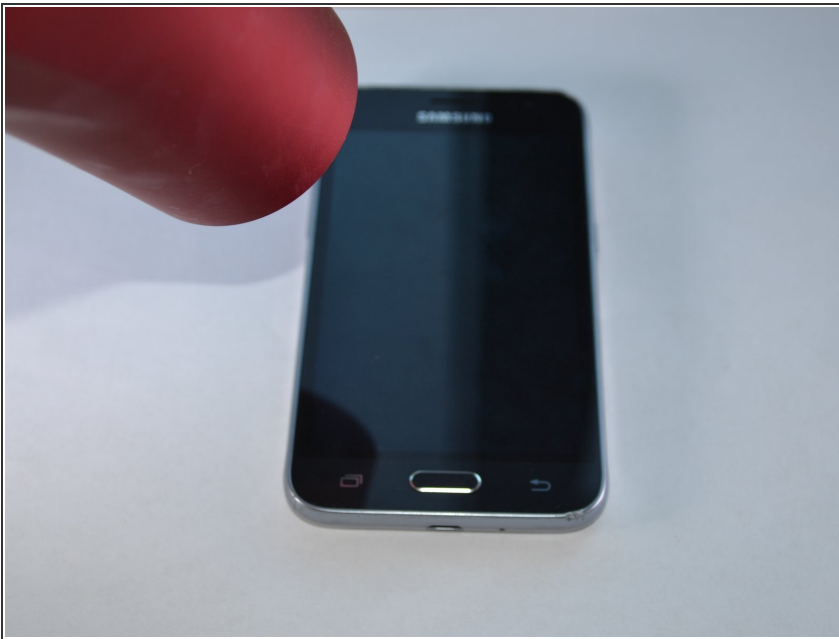
- Insert a fingernail or plastic opening tool into the gap in the bottom right corner of the battery and lift upward.
- Grip the battery and safely remove it from the phone.

Step 3 — Screen



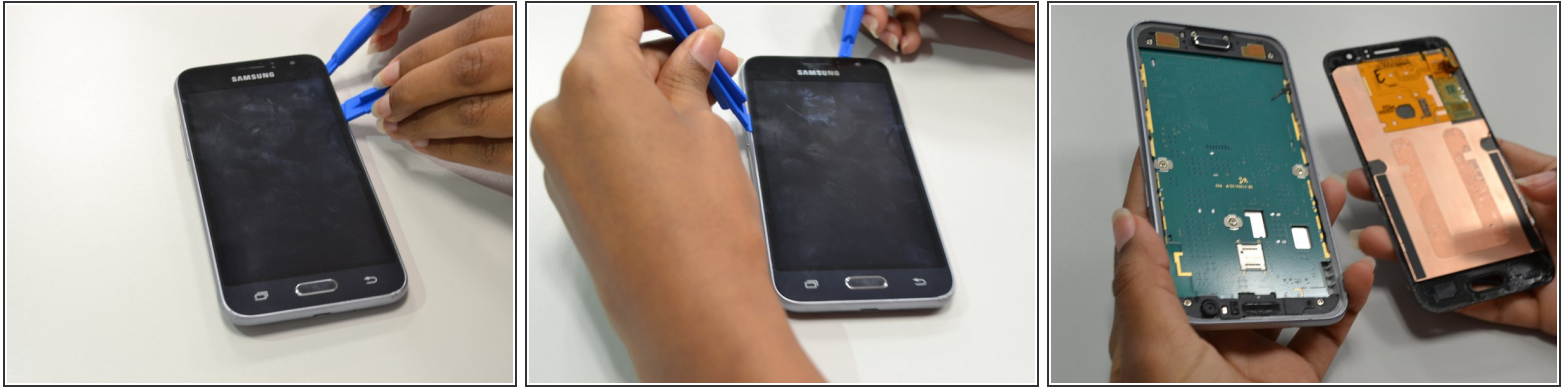
- Using angled tweezers, lift the small rectangular guard at upper right corner of the phone.
- Disconnect the connector piece from the back panel.

Step 4



- Apply heat from heat gun or blow dryer on periphery of the screen for one to two minutes.

Step 5



- Use four plastic opening tools to gently pry off the screen.

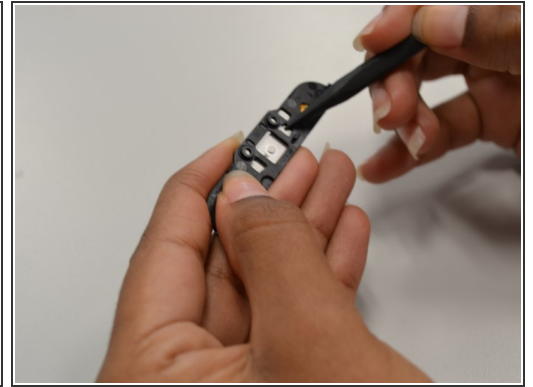
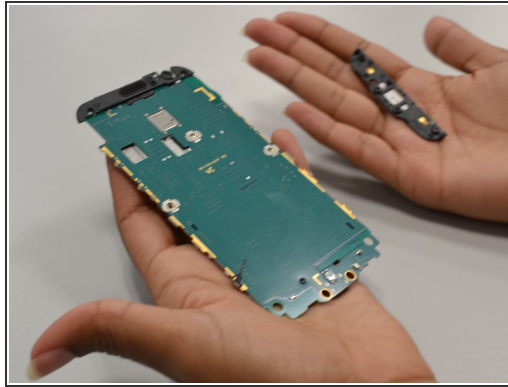
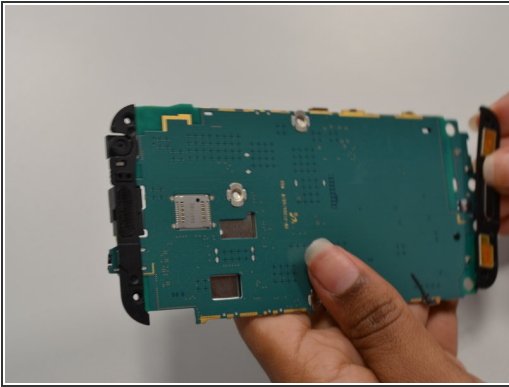
i **Optional:** Use a suction tool to pull the screen off.

Step 6 — Motherboard



- Unscrew the nine 4.5mm PH screws using a screwdriver with a PH000 bit.
- Push from the back panel to remove the bottom part of the motherboard.
- Push from the front panel to remove the top part of the motherboard.

Step 7 — Home Button



- Pull the black tab that is located on the bottom of the motherboard.
- Push the home button out of the black tab.

To reassemble your device, follow these instructions in reverse order.