



# TI-84 Plus CE Recovery Techniques.

This guide is compatible with all variants of...

Written By: TheLastMillennial



# INTRODUCTION

This guide is compatible with all variants of the TI-84 Plus CE and TI-83 Premium CE.

Most issues will be fixed with at least one of these steps, however they may end up erasing data in your calculator's RAM or ROM (Archive). To prevent data loss, backup your calculator to your computer or Archive any important information.

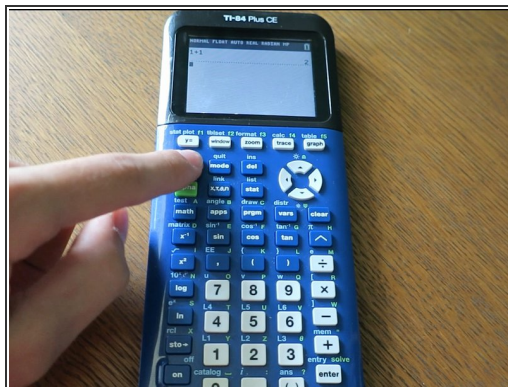
**Please note that each step is its own solution. You do not need to perform every step if your calculator starts working again.**



## TOOLS:

- [Phillips #0 Screwdriver](#) (1)
  - [USB-A to mini USB-B cable](#) (1)
-

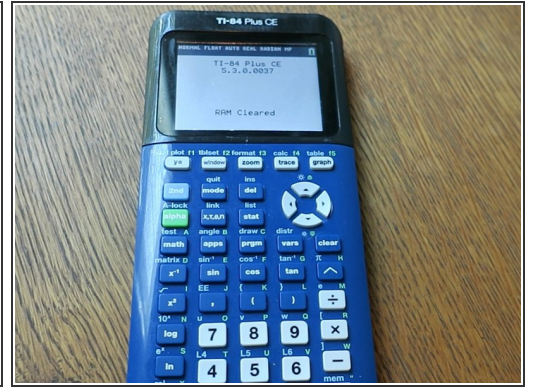
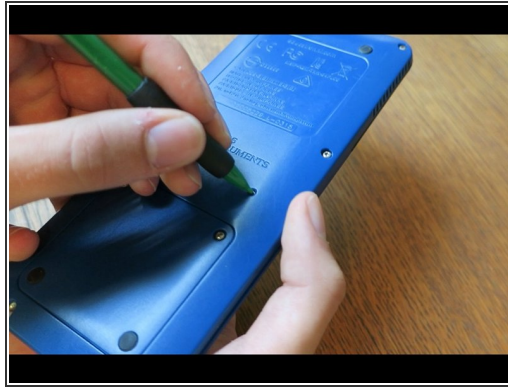
## Step 1 — Did you try turning it off and on again?



- Some problems can be fixed simply by powercycling.
  - Press [2nd]
  - Press [on]
- The calculator should now be turned off.
  - Press [on] to turn it back on.



## Step 2 — Perform a RAM reset with the reset button.

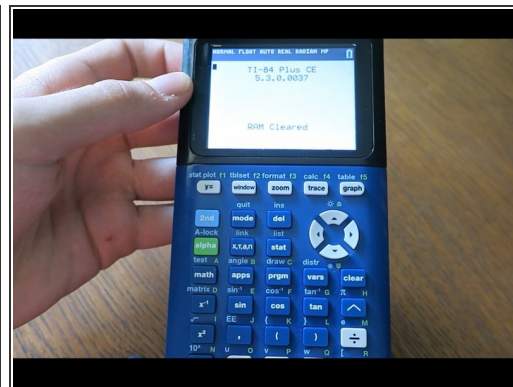
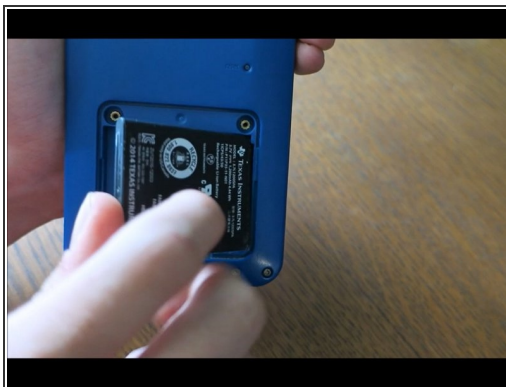


**⚠ This will clear all information stored in the RAM!**

**i** Information stored in the Archive will be safe.

- Remove the slide case and turn your calculator on its back.
- Take a pencil or thin object and press and hold the 'reset' button on the back of the calculator for at least 2 seconds, then release.
- After a second or two, your calculator should say "RAM Cleared".

### Step 3 — Perform a RAM reset by removing the battery.

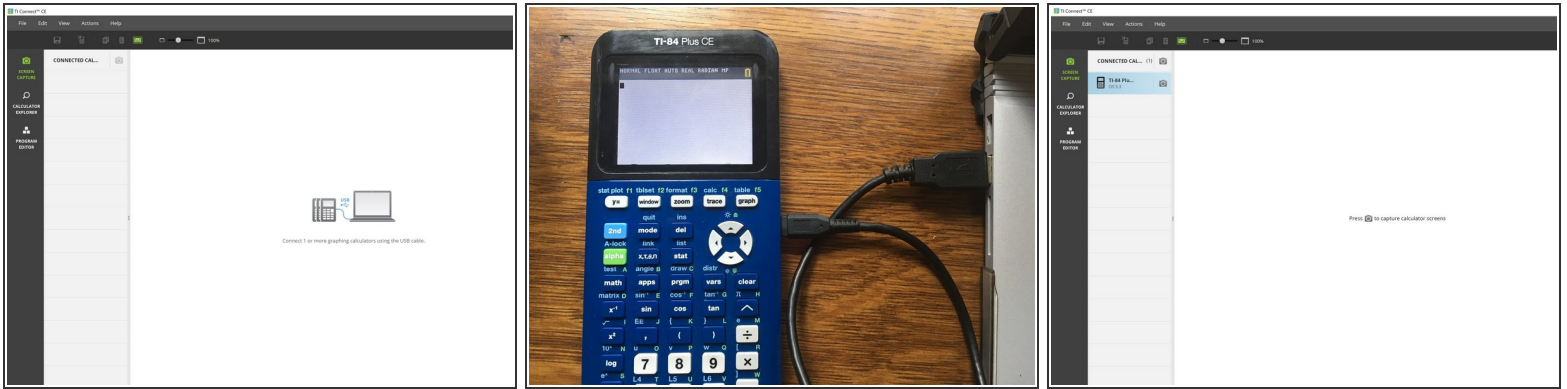


**⚠ This will clear all information in the RAM!**

**i** Information stored in the Archive will be safe.

- Refer to [this guide](#) for instructions on how to remove the battery.
- Reinsert the battery after a few seconds.
- Your calculator should automatically turn on and display a "RAM Cleared" screen.

## Step 4 — Re-install the OS (Part 1: TI Connect CE)



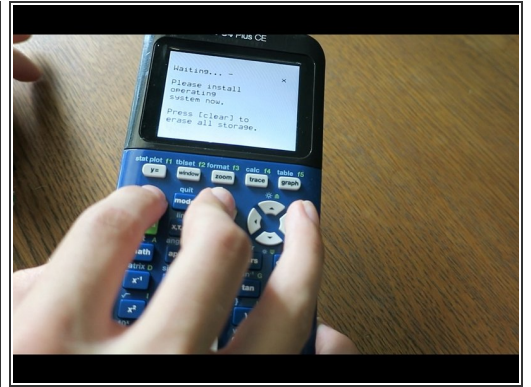
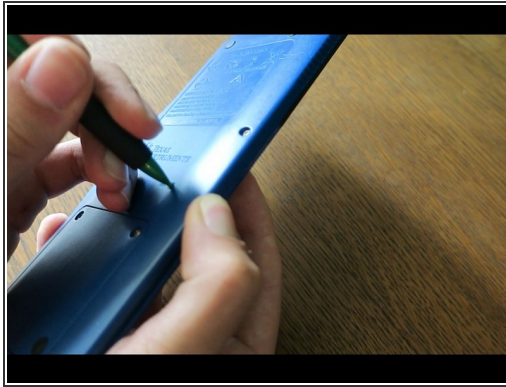
⚠ This will clear all information stored in the RAM!

⚠ This could erase information stored in the Archive!

❗ Backup your information to your computer or another calculator if you want to save information.

- Install TI Connect CE. (If you already have it installed, you can skip this step)
  - If you are running either MacOS or Windows, go to TI's website and [download TI Connect CE](#).
  - If you are running Linux, [install TiLP](#).
- Open TI Connect CE.
- Connect your calculator to your computer via a USB to mini USB adapter.

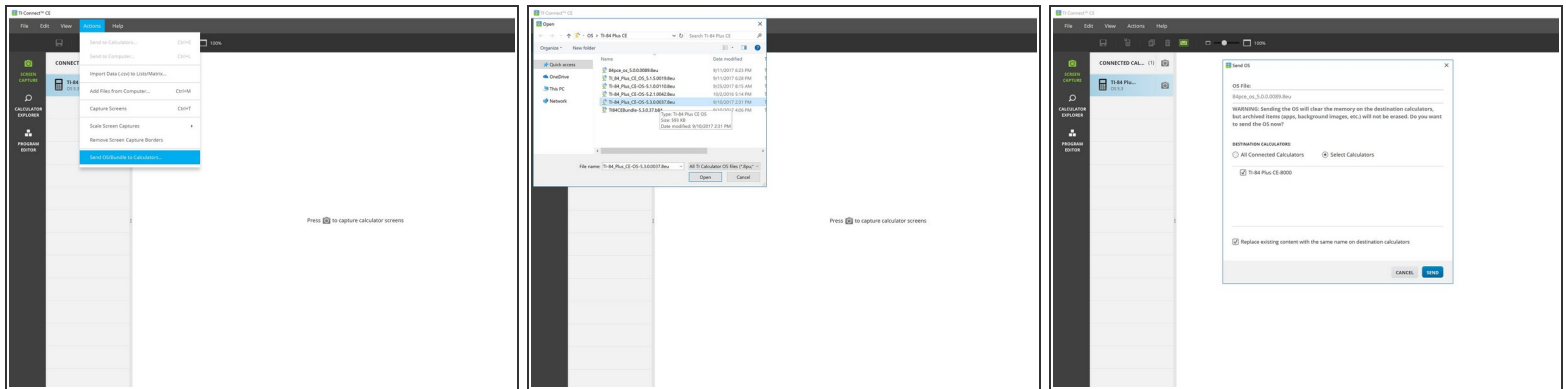
## Step 5 — Re-install the OS (Part 2: Initializing the calculator)



☛ All warnings from Part 1 still apply.


- Press and **hold** [2nd] and [del].
- Turn the calculator over; press and release the 'reset' button.
  - ☛ Keep holding down [2nd] and [del]!
- If you did it correctly, you will see a 'Install OS now' screen. If you do not see this screen, try again.
  - ❗ Once you see this screen, you can release [2nd] and [del].

## Step 6 — Re-install the OS (Part 3: Sending the OS)



 All warnings from Part 1 still apply.

**⚠ WARNING: The latest OS will disable the ability to run most games and some programs!**  
*Once you update you cannot downgrade! OS 5.4.0 is the last safe OS to update to. Anything higher will require the [arTIfiCE jailbreak](#) to run many programs.*

- If you know what OS your calculator was using, then you can go ahead and [search for it](#) on TI-Planet. Otherwise, attempt to install OS 5.4.0 first. If it fails, then you should install the latest OS from TI's website.
- Download and install OS 5.4.0: [TI-84 Plus CE](#) | [TI-83 Premium CE](#).
- If OS 5.4.0 is not supported, then download the latest OS: [TI-84 Plus CE](#) | [TI-83 Premium CE](#)
- In TI Connect CE, click on 'Actions', then 'send OS/Bundle to calculators...'
- Navigate to where you saved the OS and select it. It will take a second for TI-Connect CE to load. Once the popup appears, click 'send'.
-  This will take a few minutes to install.



## Step 7 — Re-install the OS (Part 4: Receiving the OS)



**⚠ DO NOT UNPLUG THE CABLE DURING TRANSFER!** You risk damaging your calculator!

☑ All warnings from Part 1 still apply.

- Wait for the OS to send and verify.
- Once finished, you should see a 'RAM cleared' screen. Your calculator is now finished installing the OS.

Your calculator should now be functioning.

If it is still having issues, contact Texas Instruments support:

- Website: <https://education.ti.com/en/customer-sup...>
- Email: [ti-cares@ti.com](mailto:ti-cares@ti.com)
- Call: 1-800-TI-CARES (toll free)