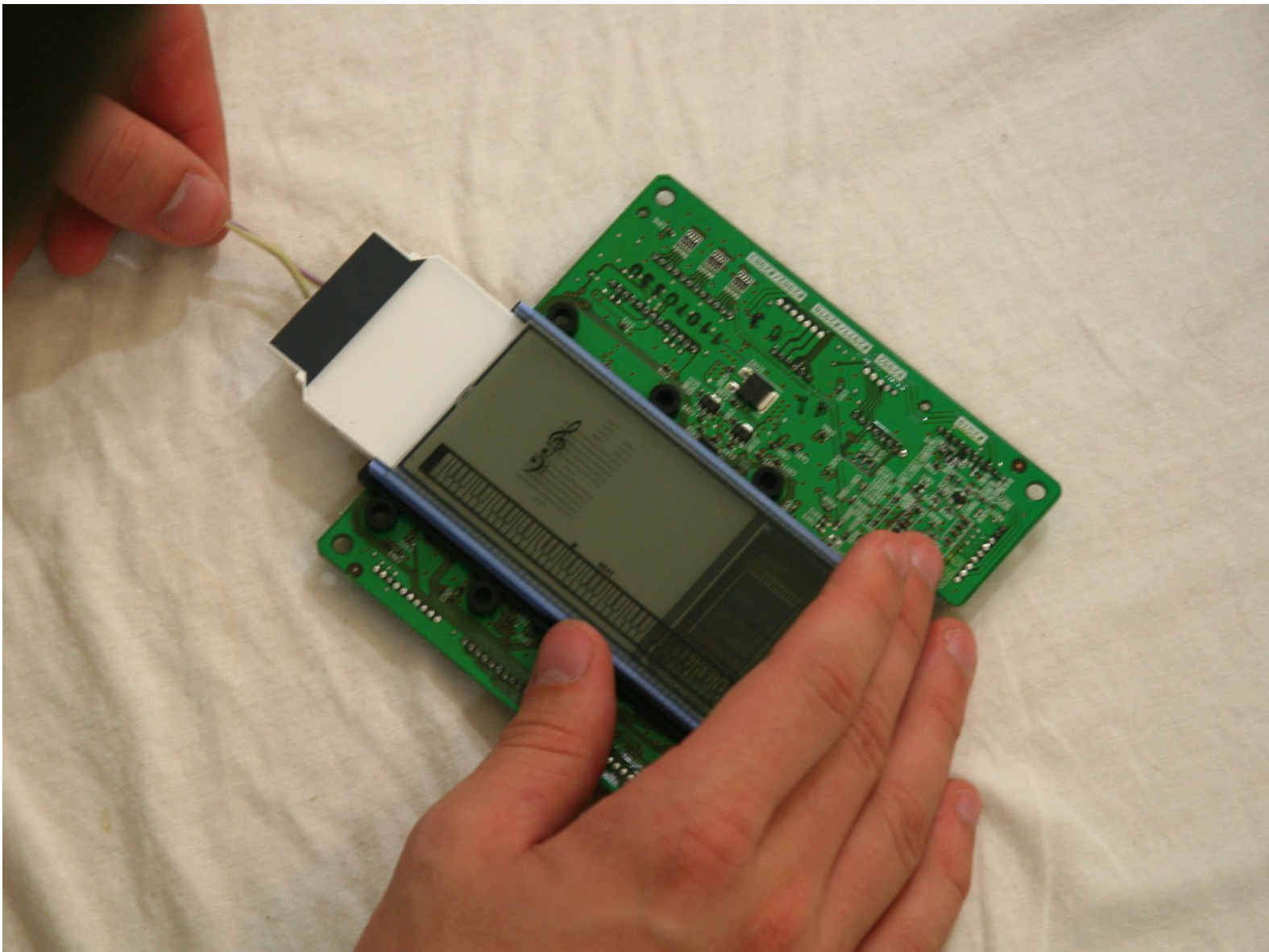




Yamaha YPG-225 Display Replacement

This guide will help with replacing a malfunctioning keyboard screen.

Written By: Lonnie Bissmeyer



INTRODUCTION

Use this guide to install a replacement keyboard display.



TOOLS:

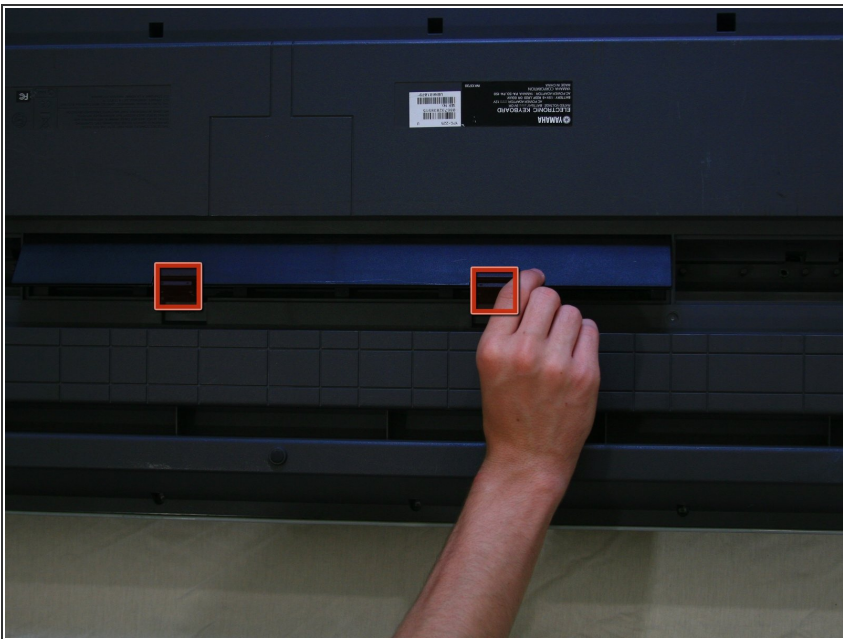
- [Phillips #00 Screwdriver](#) (1)
 - [Phillips #2 Screwdriver](#) (1)
 - [Magnetic Pickup Tool](#) (1)
 - [Flathead 3/32" or 2.5 mm Screwdriver](#) (1)
-

Step 1 — Batteries



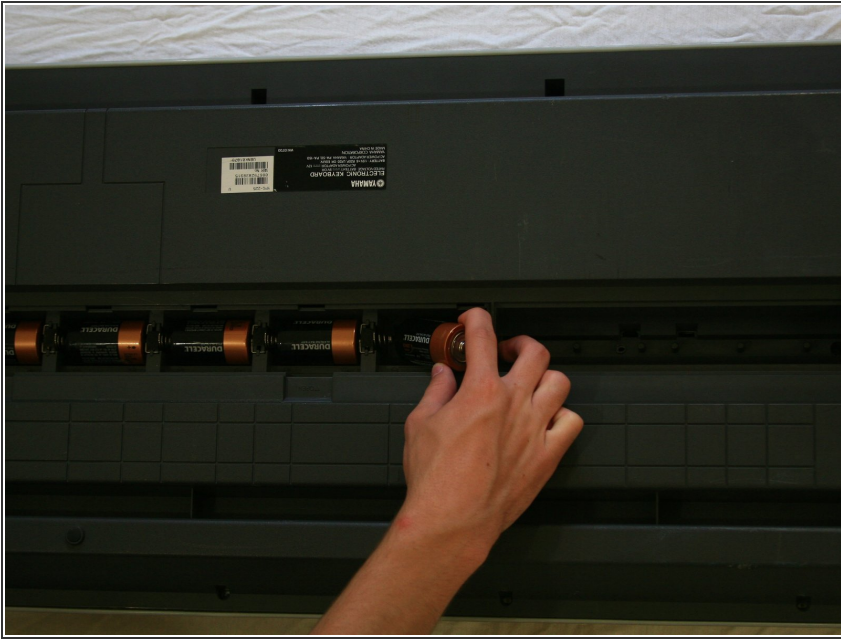
- Turn the keyboard over so that the keys are facing the ground.

Step 2



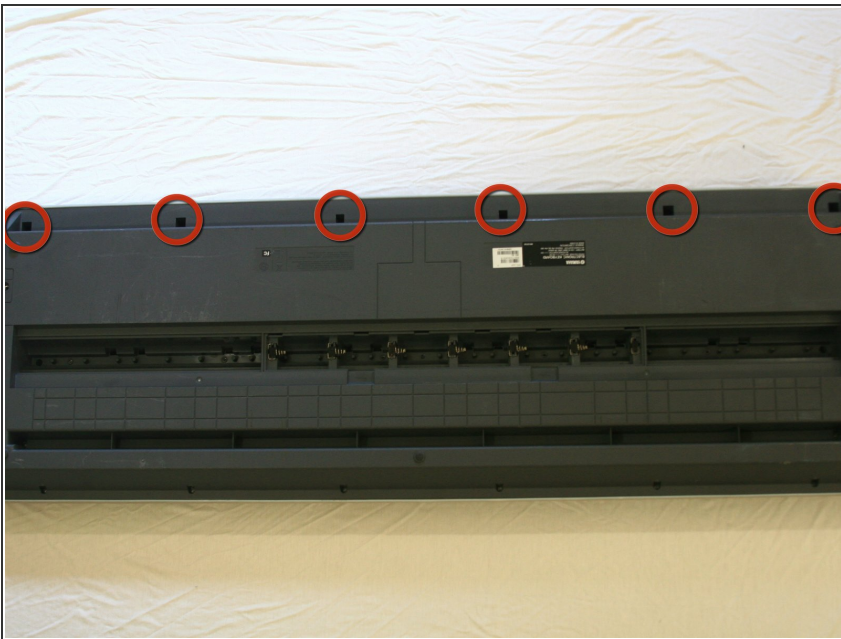
- Pop the tabs on the battery casing and remove it from the back plate.

Step 3



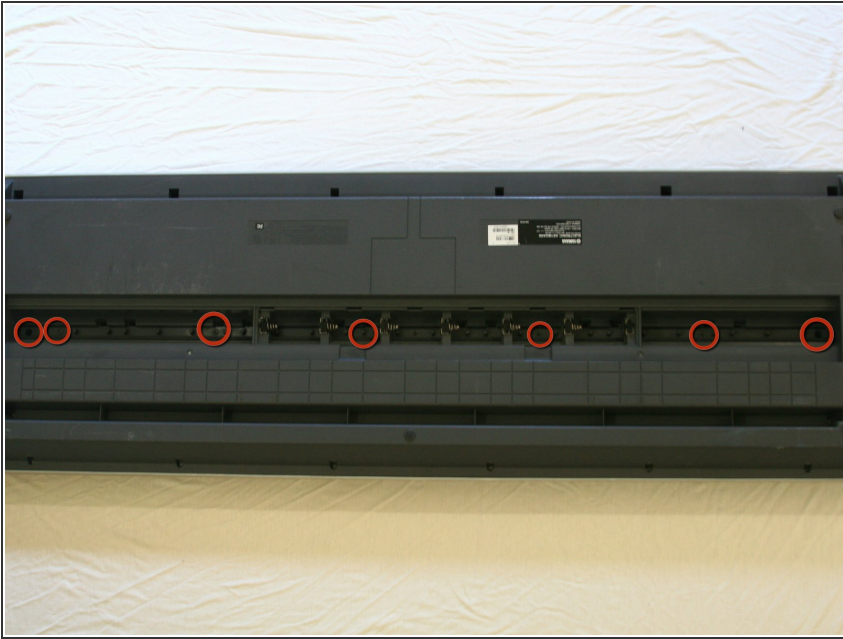
- Locate the six batteries and remove them from the battery cavity.

Step 4 — Faceplate



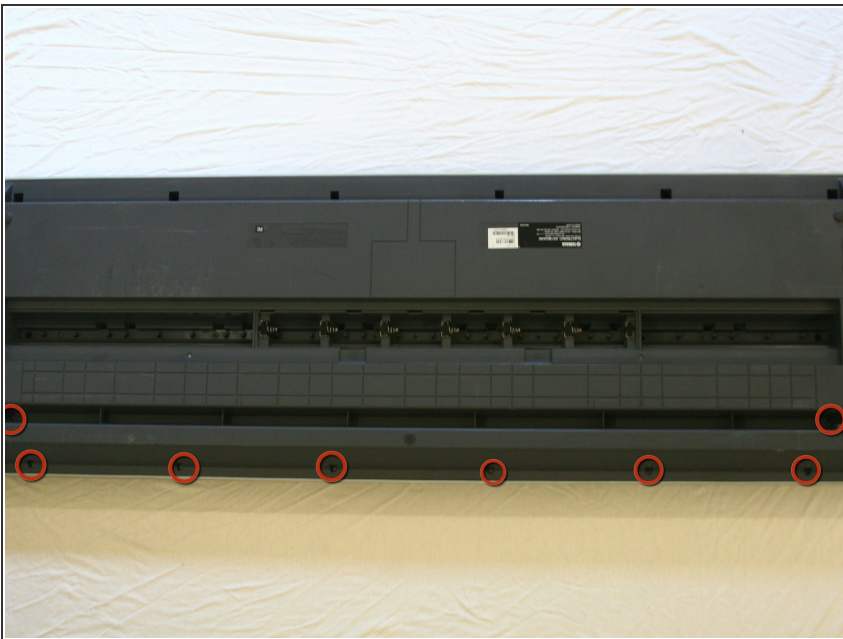
- Remove the six 10mm screws at the top of the backplate.

Step 5



- Remove the seven 12mm screws in the middle of the back plate.


Step 6



- Remove the eight 10mm screws from the side and the bottom of the back plate.

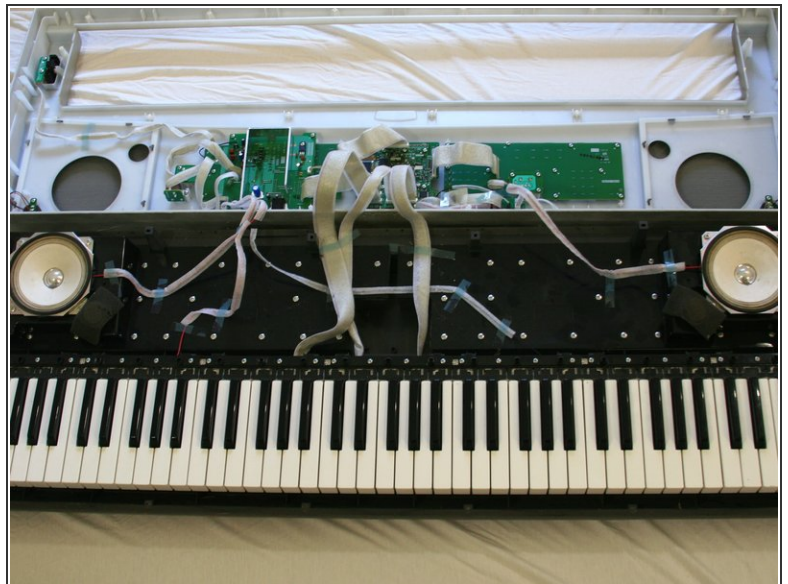
Step 7



 As the face plate is no longer connected to the body of the keyboard, be careful to not drop the body when performing this step.

- Flip over the keyboard.

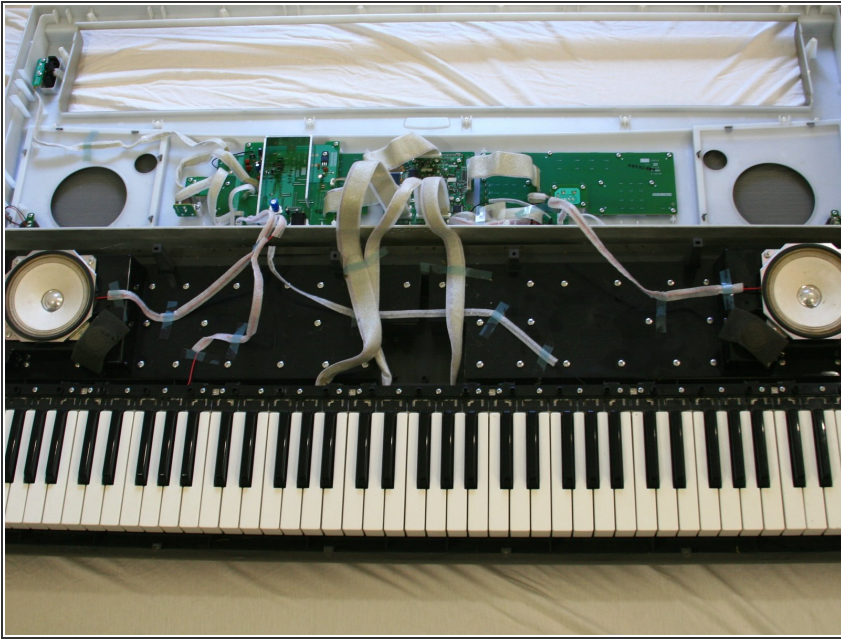
Step 8



- Lifting from the front and the back of the face plate equally, pull the face plate up and then back, away from the keyboard.

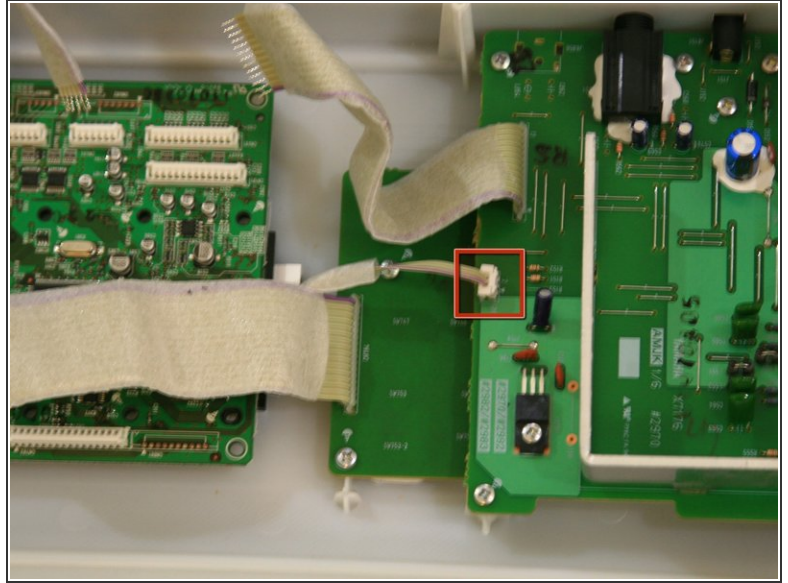
 Be careful when removing the face plate. There are wires attached.

Step 9 — Main Circuit Board



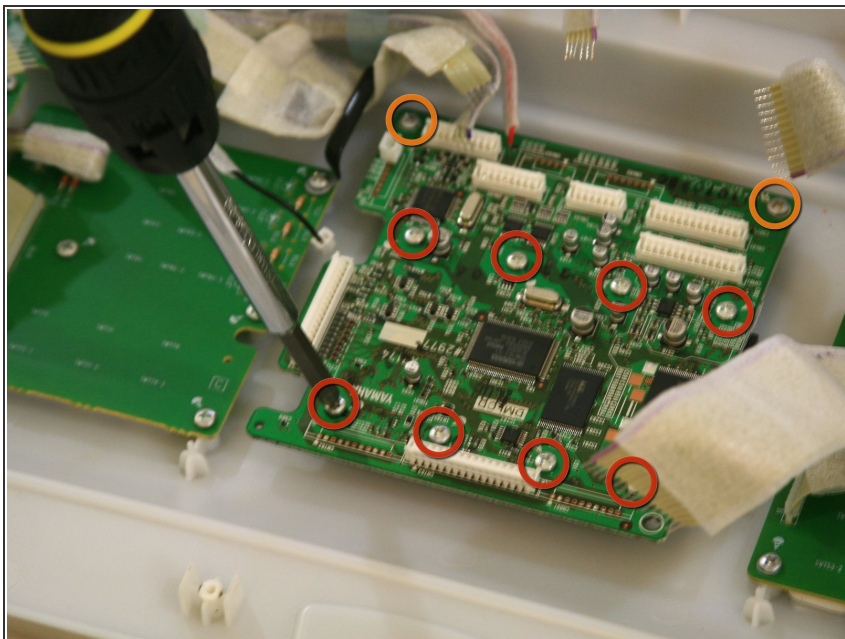
- Locate the main circuit board in the middle of the detached face plate.

Step 10



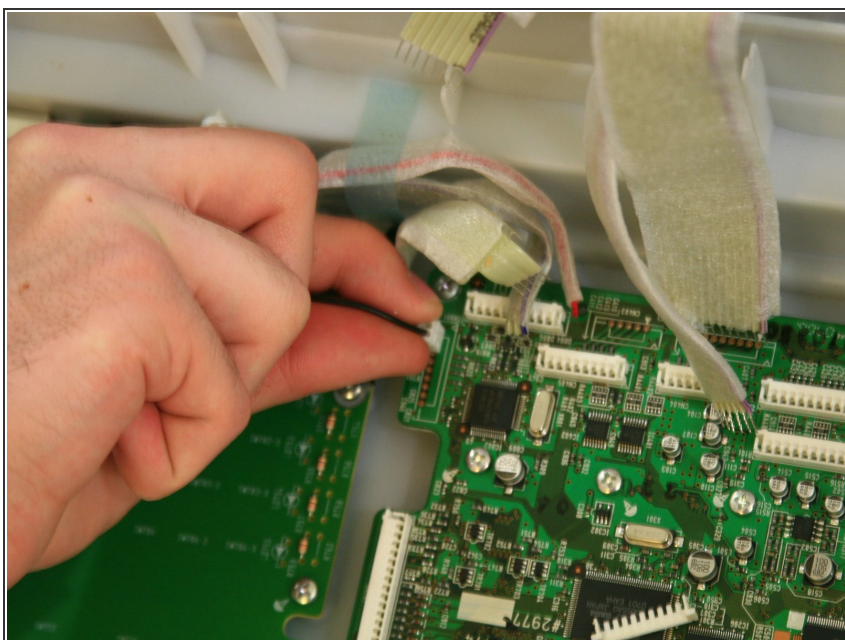
- Use a plastic opening tool or spudger to carefully pry up the beige ribbon connectors and remove the wires from them.
 - ⚠ Be sure to use a tool that is ESD safe!
 - Use a slightly upward force as parallel to the ground as possible.
 - ☑ Be sure to make a mental note or jot down the locations of the specific ribbon cables. Some are in close proximity to each other and it can be easy to forget which ribbon goes where.
- Be sure to unplug the smaller ribbon that connects to a different circuit board.
- ⚠ Take care not to use too much force. The connectors are fragile, the ribbon wires are easily bent, and too much force may damage the circuit board if you happen to miss.

Step 11



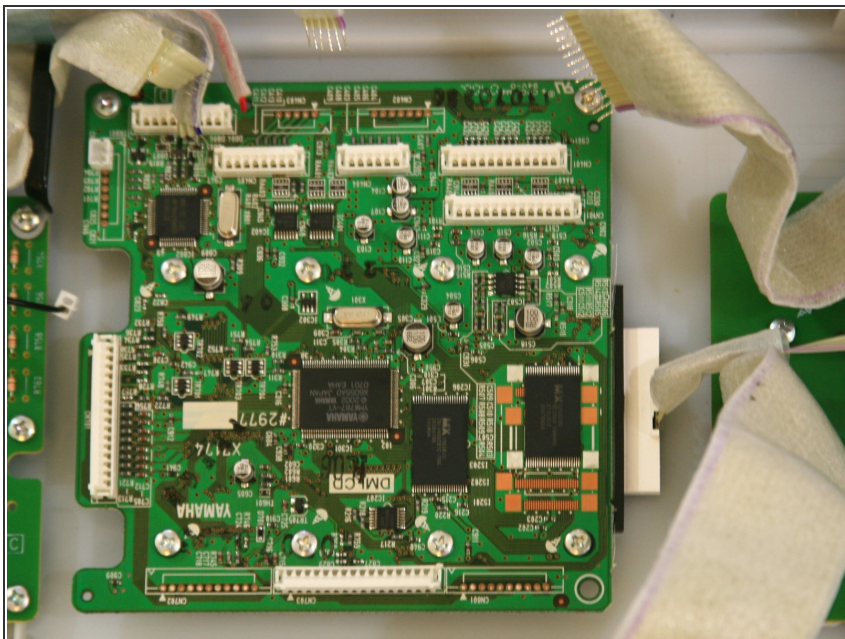
- Move the ribbons out of the way, and remove the eight 10mm screws in the middle that hold the circuit board down.
- Remove the two 12mm screws in the corner of the circuit board.

Step 12



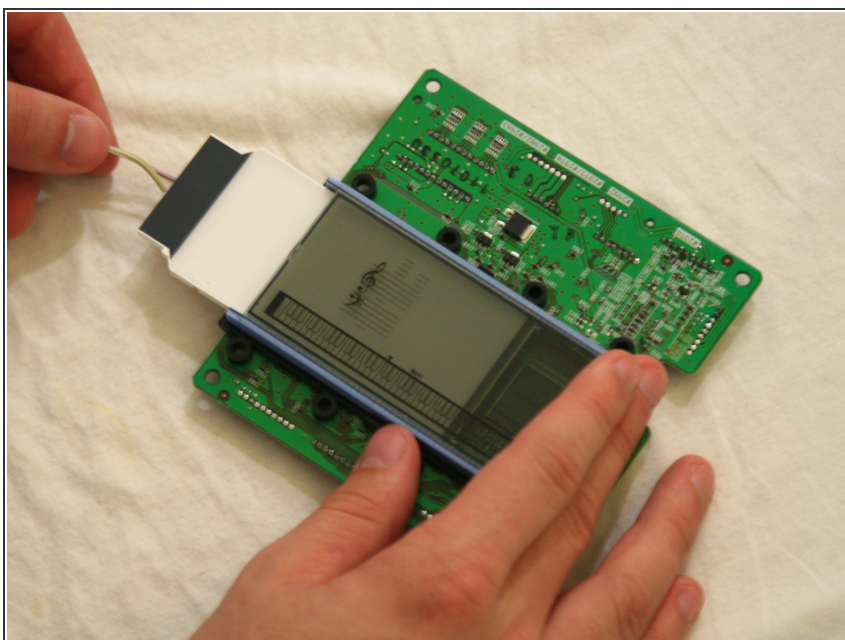
- Remove this wire carefully by hand.

Step 13



- Completely remove the circuit board from the face plate.

Step 14 — Display



- Slide out the screen from its case on the circuit board.

To reassemble your device, follow these instructions in reverse order.