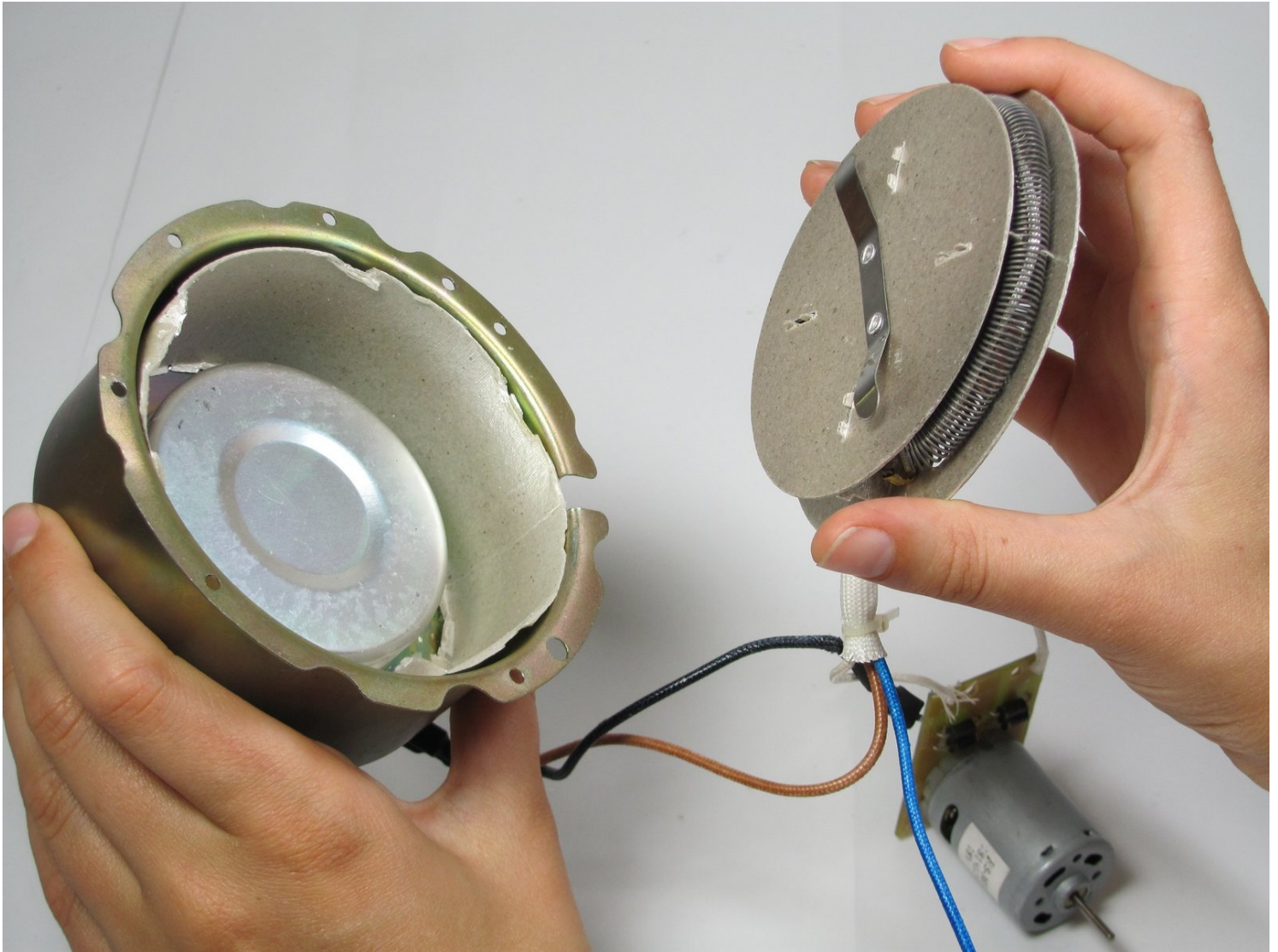




Nostalgia Electrics RHP-310 Wiring Repair

Written By: Dana Clarke



TOOLS:

Digital Multimeter (1)

iFixit Opening Tool (1)

Phillips #2 Screwdriver (1)

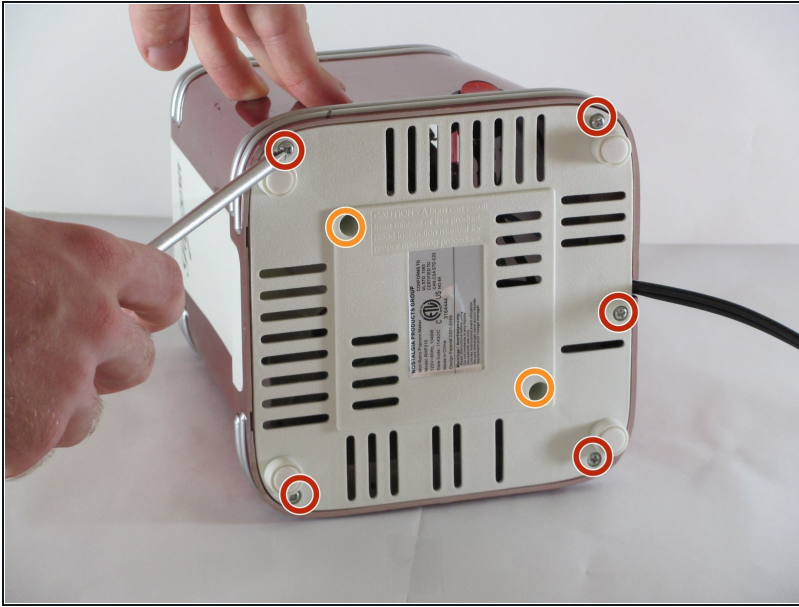
Step 1 — Power Switch



 Unplug the popper.

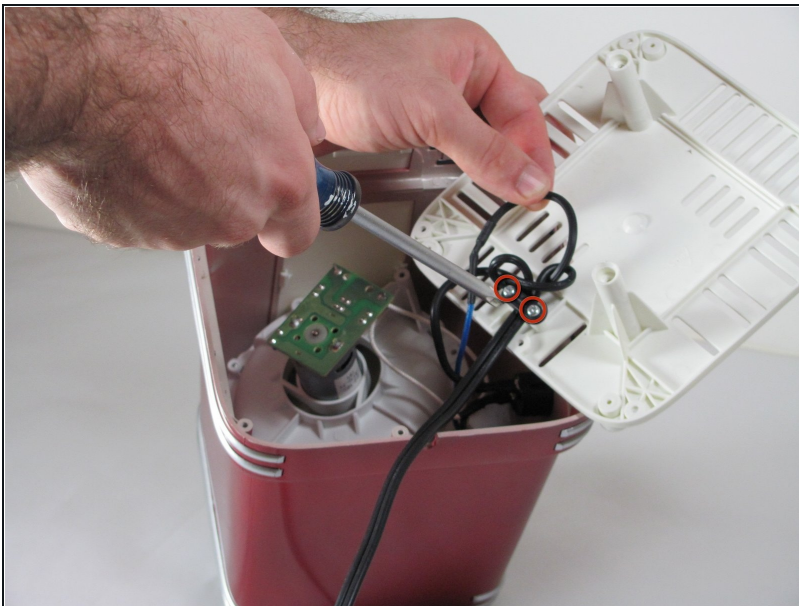
- Lift the lid up to remove it.

Step 2



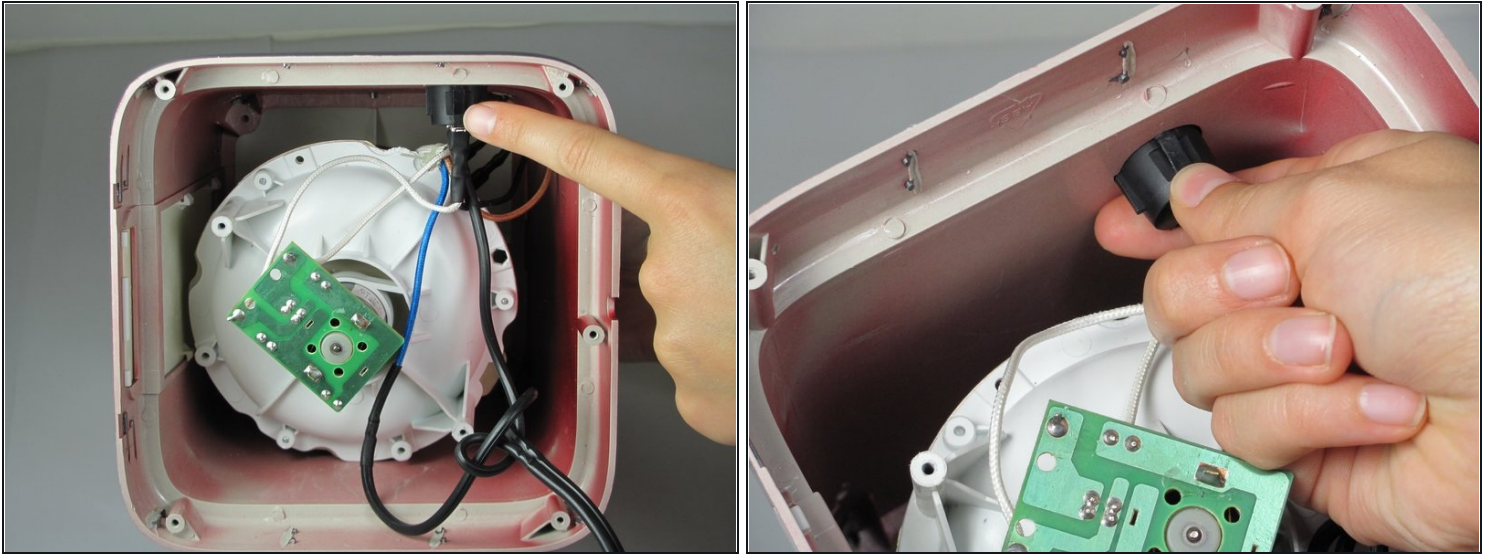
- Lay the popper on its side.
- Remove the five 12mm Phillips #2 screws around the perimeter of the base with the Phillips #2 screwdriver.
- Remove the two 15mm Phillips #2 screws in the center of the base with the Phillips #2 screwdriver.
- ① Put the removed screws in a safe place, they will be needed later to reattach the housing to the base.

Step 3



- Flip the base over to view the interior of the base panel.
- Unscrew the two 10 mm Phillips #2 screws from the base panel.
- Remove the base and set it aside.

Step 4



- Locate the power switch connected to the side of the housing.
- Pinch the sides of the power switch.
- Push the power button up and out of the housing.

Step 5



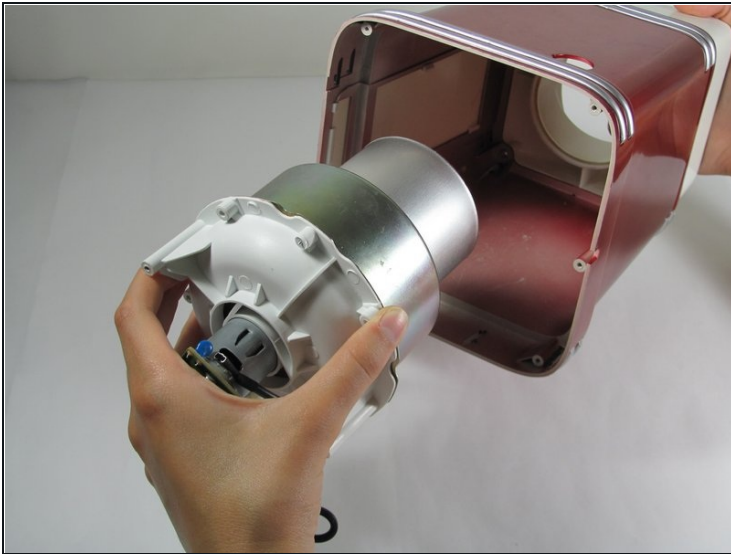
- Remove the wires connected to the power switch that should be detached from the housing.
- Gently pry the wires loose from the power switch with the plastic opening tool.
- ① The wires should easily pop out from the power switch.

Step 6



- Remove the power switch from the housing unit.
- You can now replace the power switch, if necessary.

Step 7 — Replacing Housing



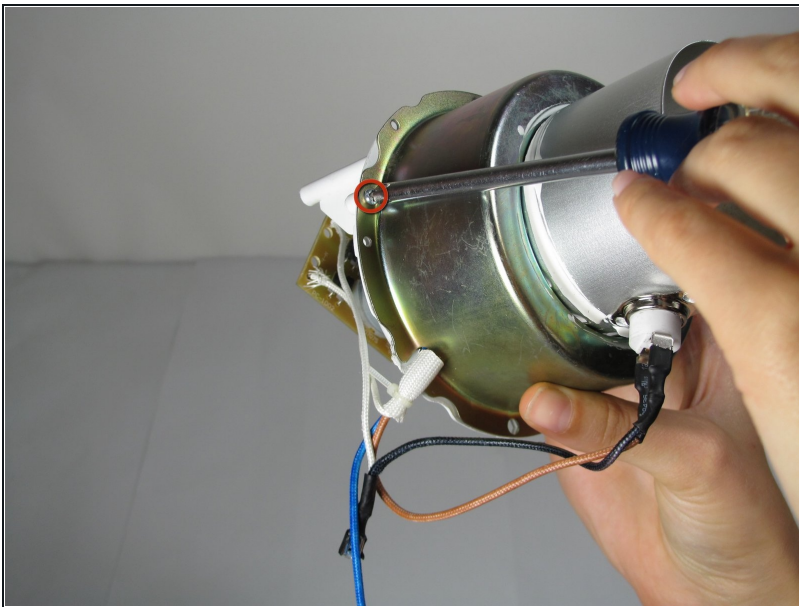
- Gently remove the heating component from the popper.
- Unscrew the four screws (11mm Philips #2 screws) that connect the white top to the housing.
- ① Save the screws from this step. You will need them to connect the new housing to the white top.

Step 8



- Remove the white top from the housing.

Step 9 — Replacing Fan



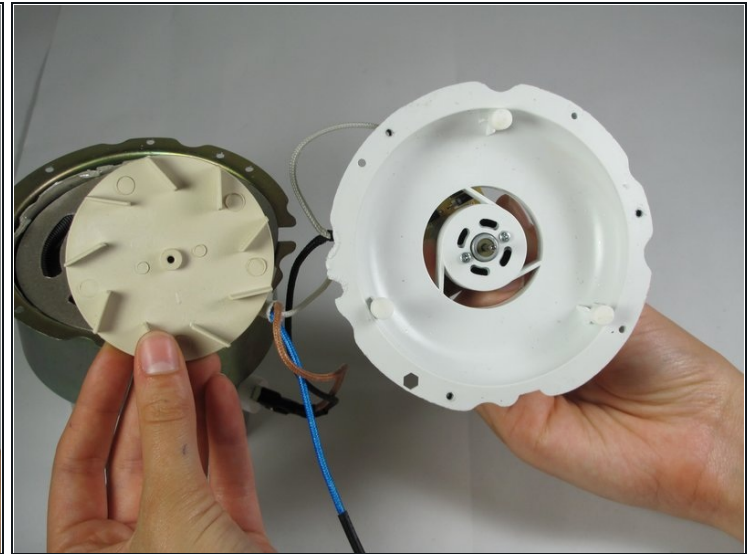
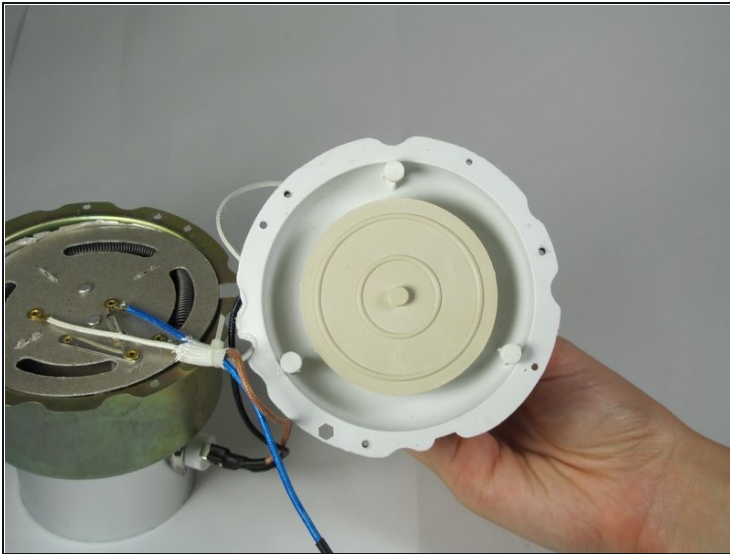
- Unscrew the three 10 mm Philips #2 screws that hold the heating component together.
- ⓘ Keep the screws in a safe place. You will need them to put the heating component back together.

Step 10



- Pull the heating component apart.

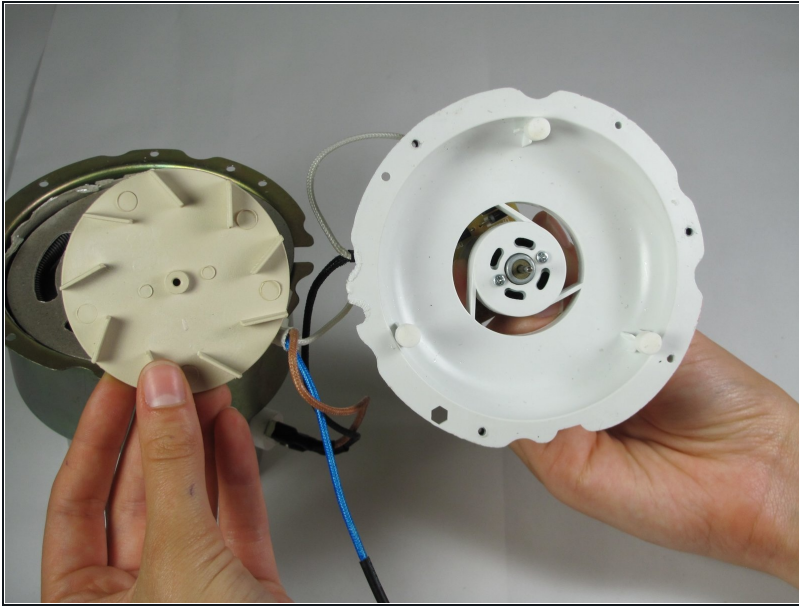
Step 11



- Locate the fan.
- Pull the fan off the motor.

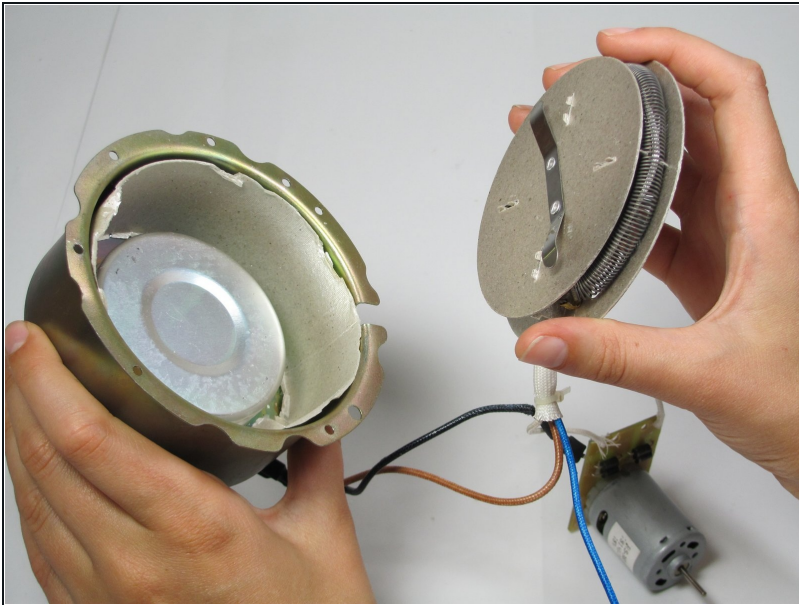
⚠ Do not pull too hard or you will break the motor.

Step 12



- You can now replace the fan. If there is debris, clean it out.

Step 13 — Nostalgia Electrics RHP-310 Wiring Repair



- Take the heating coil out of complete heating component.

Step 14



- Visually check the wires for frayed wires.
- Make sure that the wires are completely connected to a port.

Step 15



- If you see a wire that is not connected, solder it back into place.
- ① These websites might be helpful in soldering: [Wikipedia](#) [Theoatc](#)
- Also, use a digital multi-meter to check to make sure there is a current through the wire. If the meter does not read, you might need to replace all the wires.
- ① This website may be helpful in with wiring: [How Stuff Works](#)

Step 16



ⓘ This website will help with reconnecting wires: [eHow](#)

To reassemble your device, follow these instructions in reverse order.