



Google Home Sound Driver Replacement

Fix your Google Home's poor audio quality with...

Written By: Gabe Hyun



INTRODUCTION

Fix your Google Home's poor audio quality with a new sound driver.

This guide will teach you how to take apart your Google Home to remove a faulty sound driver and replace it with a new one.

TOOLS:


[T6 Torx Screwdriver](#) (1)

[Tweezers](#) (1)

[Pro Tech Toolkit](#) (1)

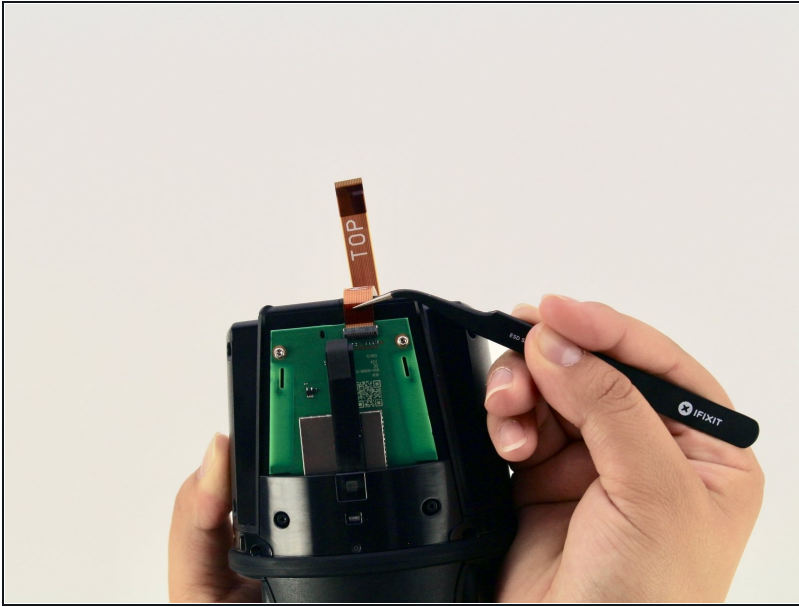
Step 1 — Interconnect Cable



 Removing the lid too quickly could cause you to tear the interconnect cable that attaches the base to the top of the lid.

- Pull off the Google Home's magnetically attached base and set it aside.
- Using a Torx T6 screwdriver head, unscrew the four 1.7mm Torx screws deep in the speaker recess so that you can remove the lid.
- After all four screws are out, pop the lid off the device to open the capsule.

Step 2



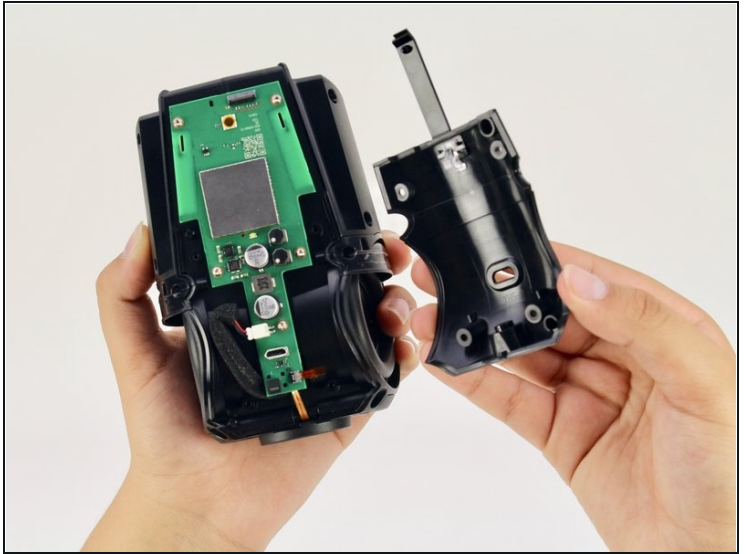
- Carefully remove the interconnect cable using a pair of [tweezers](#).

Step 3 — Mute Button Switch



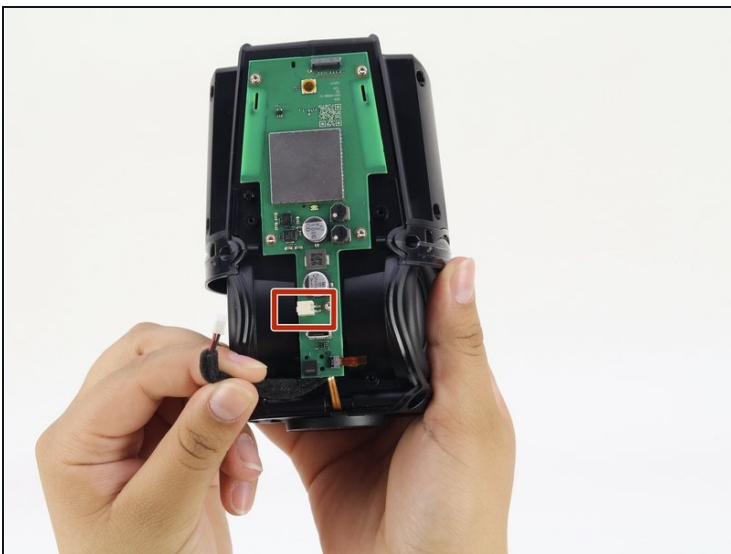
- Remove the 'O-ring' that wraps around the device holding the switch panel in place.

Step 4



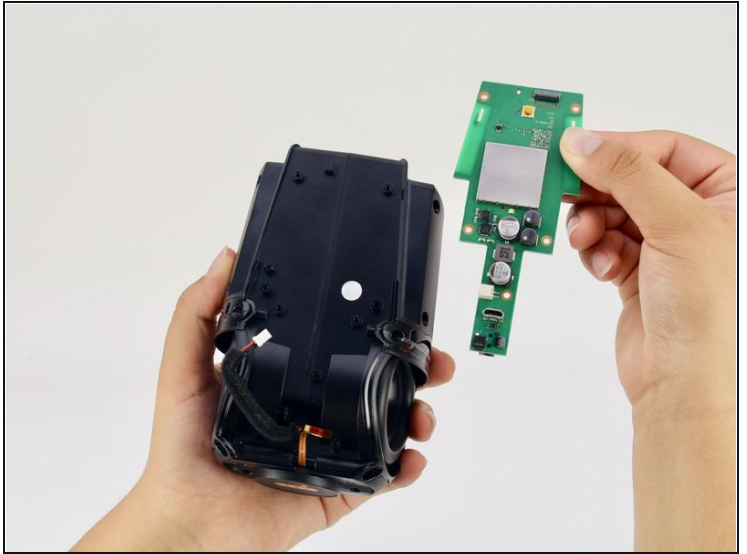
- Using a Torx T6 screwdriver head, unscrew the four black 1.7mm Torx screws.
- Remove the panel and the mute button switch. If done correctly you should now be able to see the device's guitar-shaped motherboard.

Step 5 — Motherboard



- Disconnect the foam-padded, red and black cable that connects the motherboard to the sound driver, by squeezing and pulling on the tab
- Disconnect the orange interconnect cable that connects the bottom of the device to the motherboard by pulling straight out on the orange tab.

Step 6



- Using a Torx T6 screwdriver head, unscrew the five silver 1.7mm Torx screws keeping the motherboard in place.
- Remove the motherboard.

Step 7 — Sound Driver



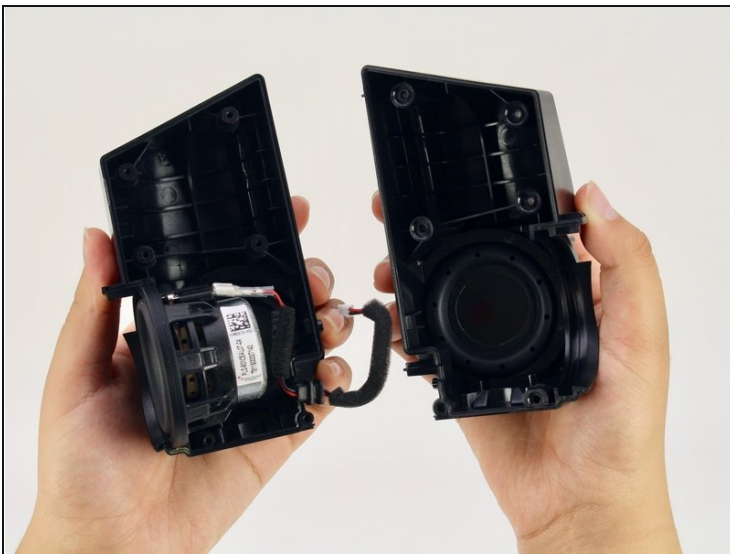
- Using a Torx T6 screwdriver head, unscrew the four black 1.7mm Torx screws on the bottom of the device.
- ⓘ For this step you will need a T6 screwdriver with an extra long head to reach the screws.

Step 8



- Using a Torx T6 screwdriver head, unscrew the six black 1.7mm Torx screws on the side of the device.

Step 9



- Pull apart the black casing to reveal the sound driver.
- Remove the sound driver.

To reassemble your device, follow these instructions in reverse order.

