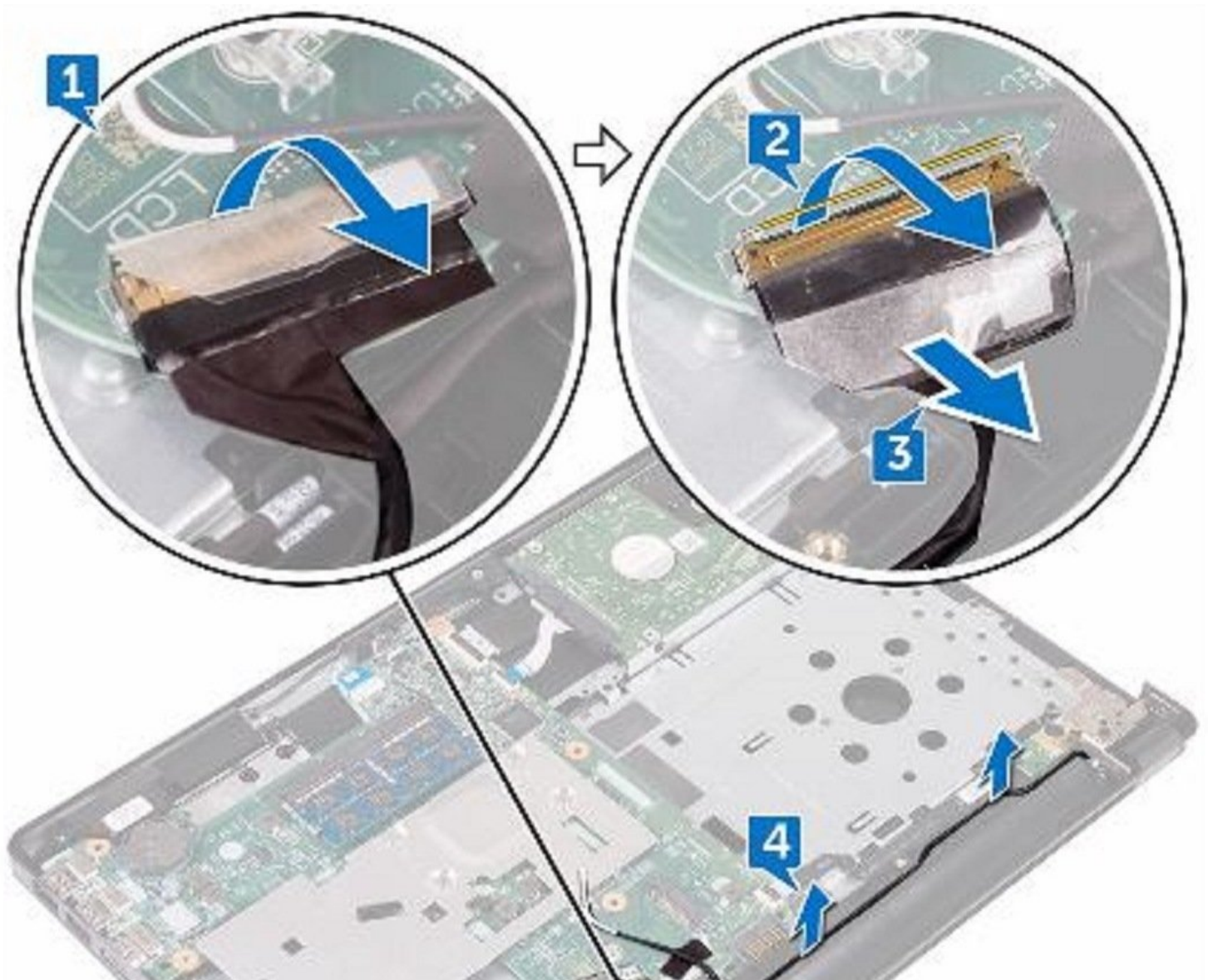




Dell Inspiron 14 3462 Display Assembly Replacement

Written By: Terrence15



INTRODUCTION

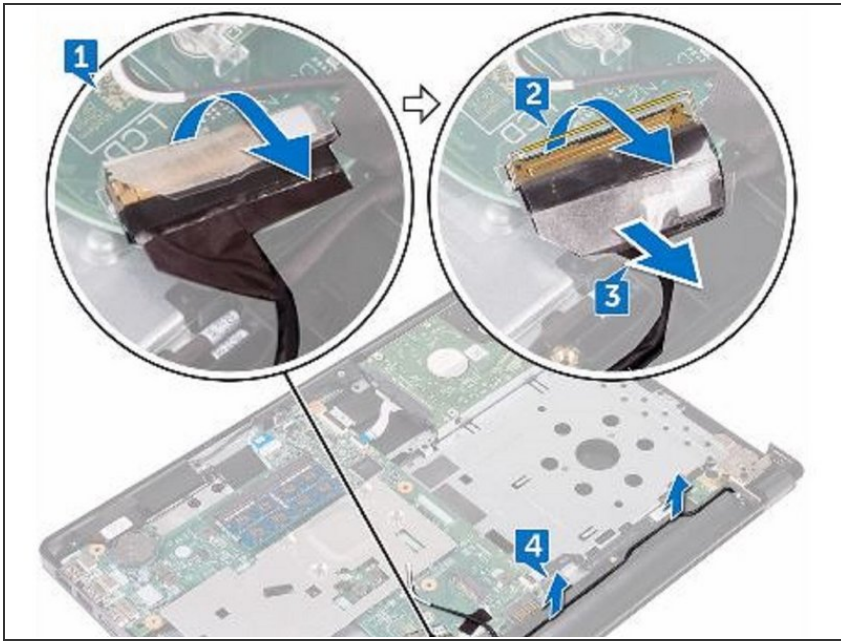
In this guide, we will show you how to remove and replace the Display Assembly.



TOOLS:

- [Phillips #0 Screwdriver](#) (1)
-

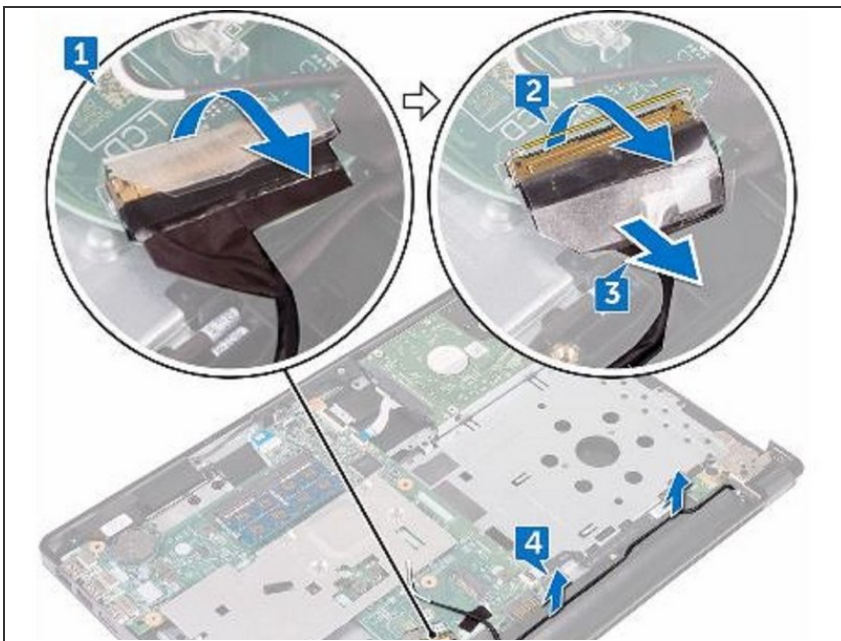
Step 1 — Peel the Tape



⚠ WARNING: Before working inside your computer, read the safety information that shipped with your computer and follow the steps in [Before Working Inside Your Computer](#). After working inside your computer, follow the instructions in [After Working Inside Your Computer](#).

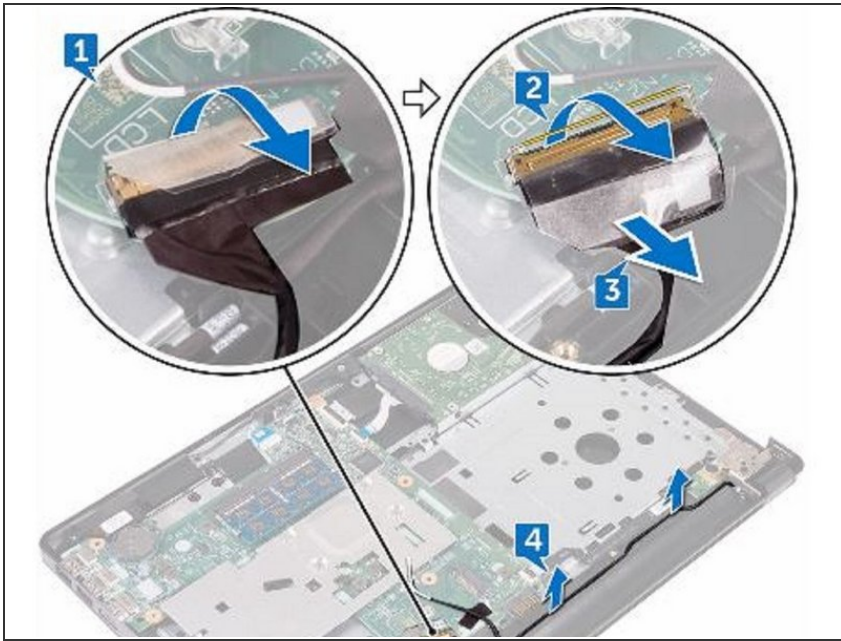
- Peel the tape that adheres the display cable to the system board.

Step 2 — Disconnecting the Display Cable



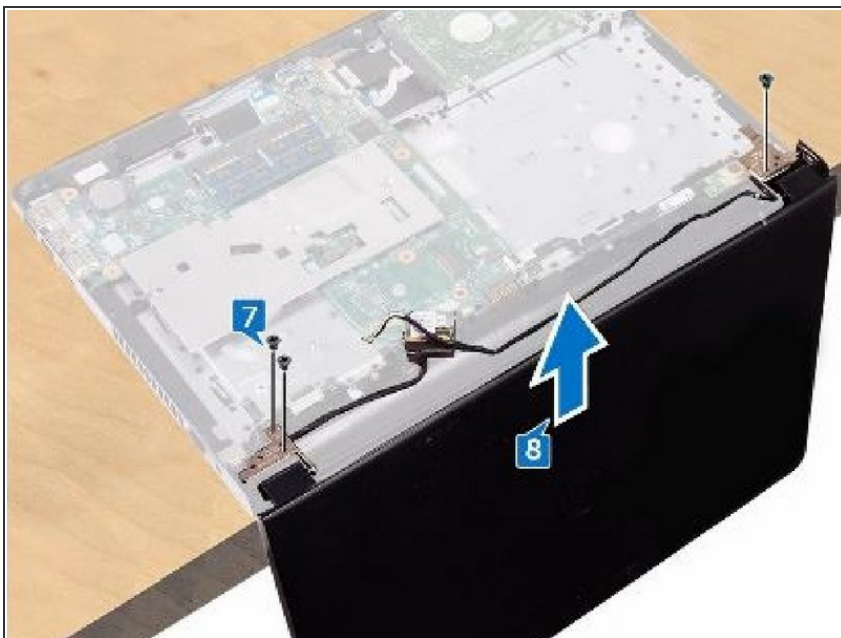
- Open the latch that secures the display cable into position.
- Disconnect the display cable from the system board.

Step 3 — Remove the Antenna Cable



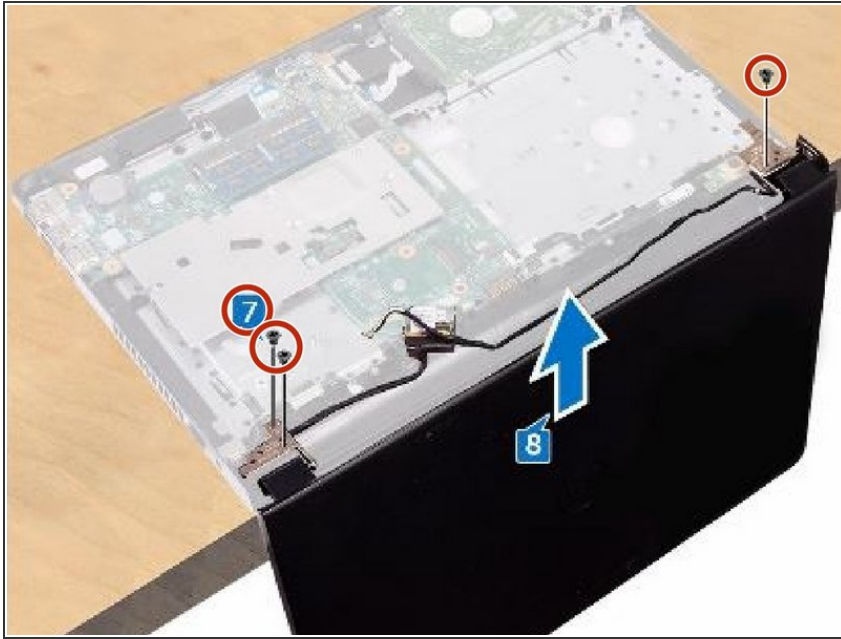
- Note the antenna-cable routing, and remove the antenna cable from the routing guides on the palm-rest assembly.

Step 4 — Turn the Computer Over



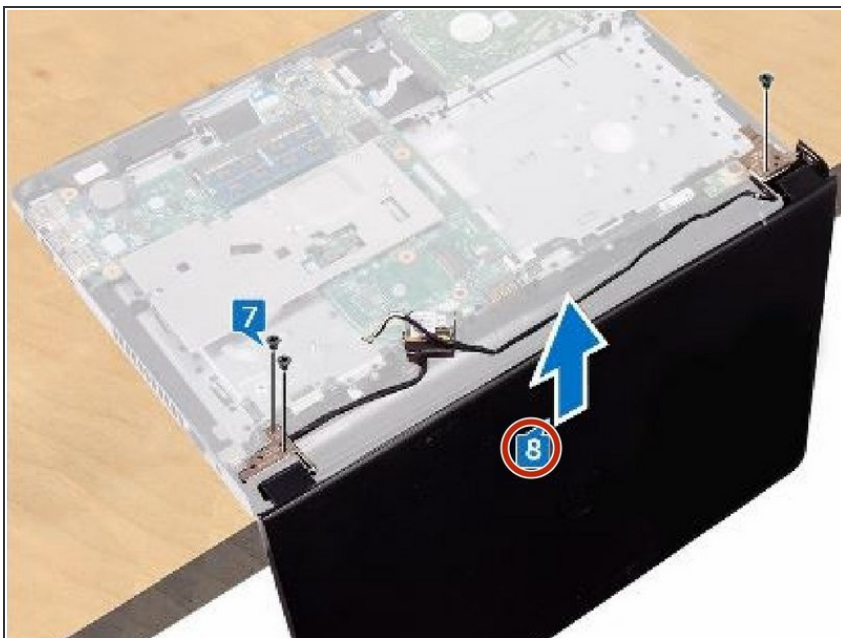
- Turn the computer over and open the display at an angle of 90 degrees.
- Turn the computer over and place it on the edge of the table in a position that allows access to the screws on the display hinges.

Step 5 — Remove the Screws



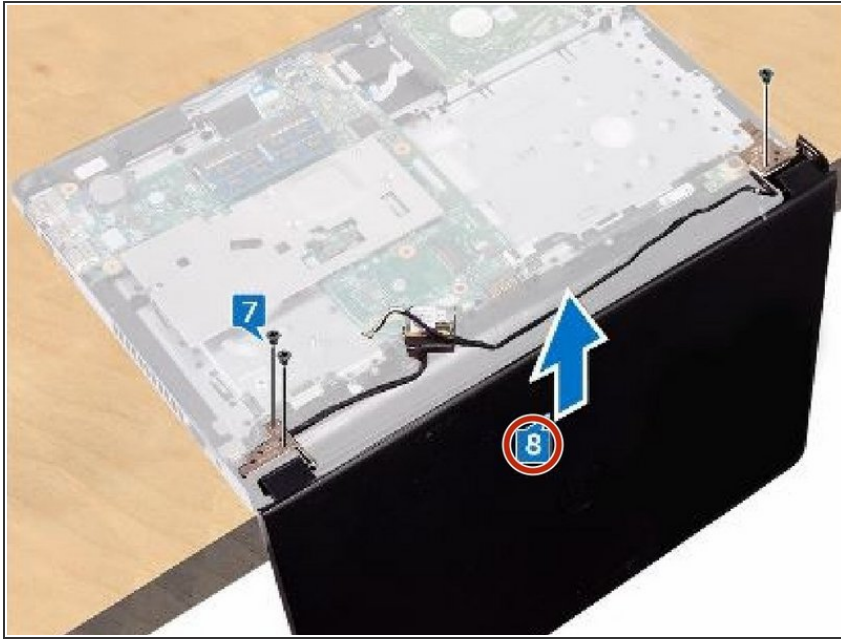
- Remove the three screws (M2.5x8) that secure the display-hinge brackets to the palm-rest assembly.

Step 6 — Lifting the Display Assembly



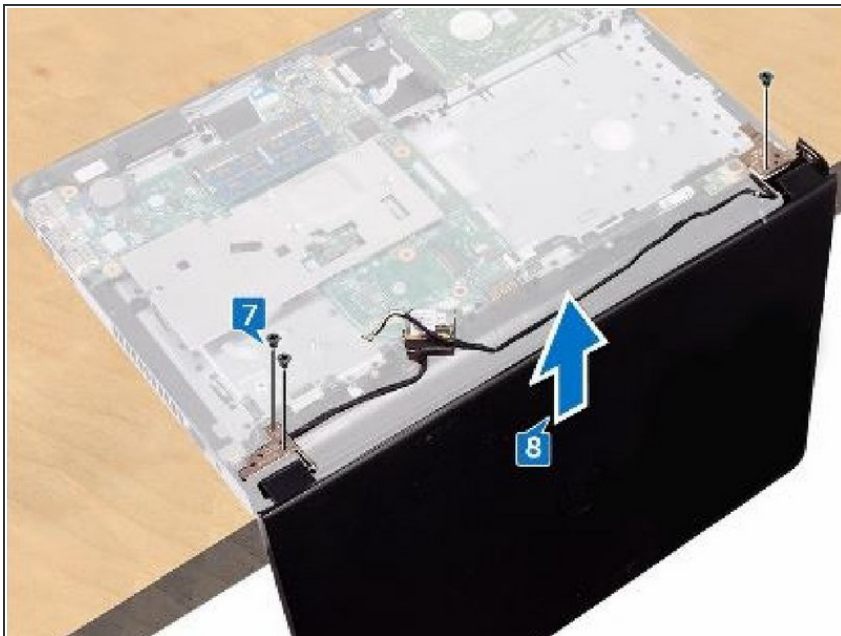
- Carefully lift the display assembly from the palm-rest assembly.

Step 7 — Placing the Display Assembly



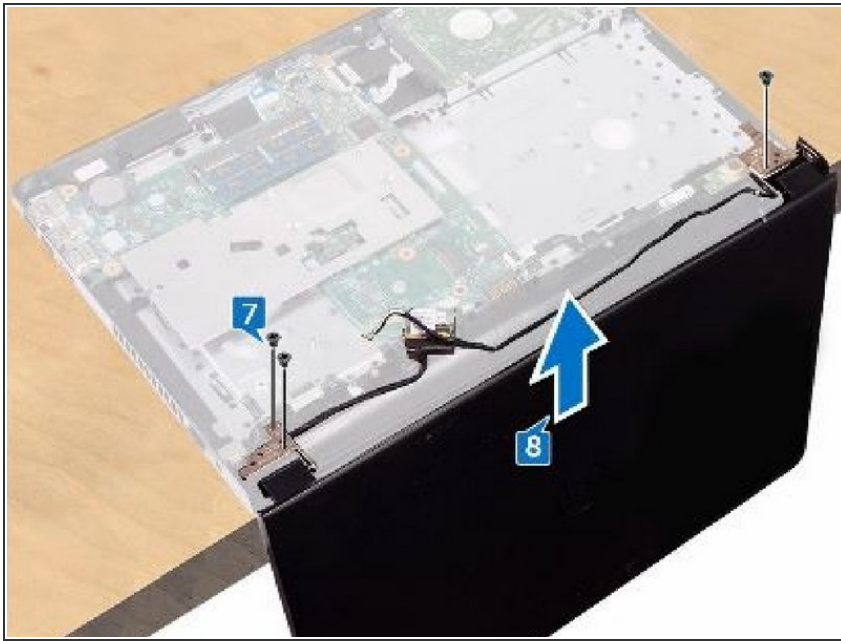
- Carefully place the display assembly on a clean and flat surface.

Step 8 — Placing the Display Assembly



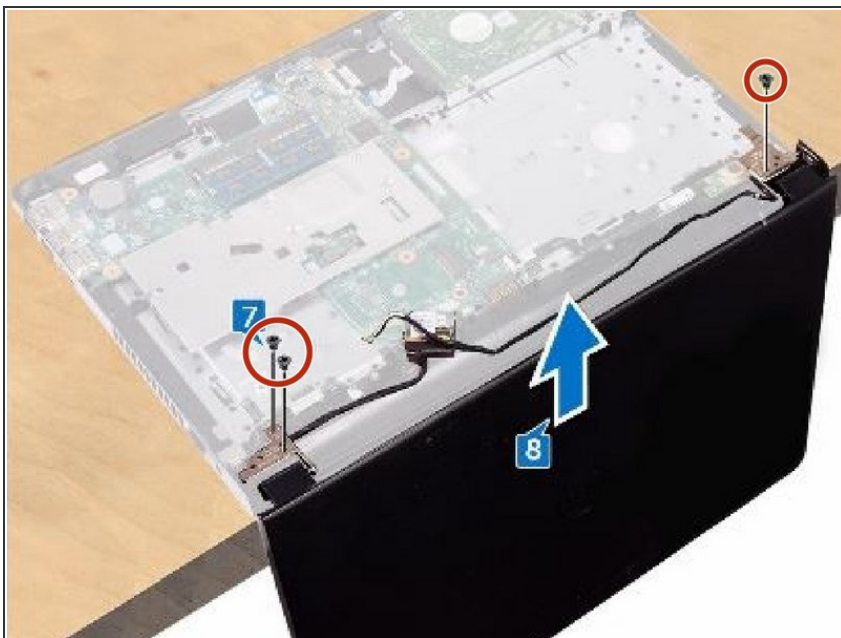
- Place the **NEW** display assembly at the edge of the table.

Step 9 — Align the Screw Holes



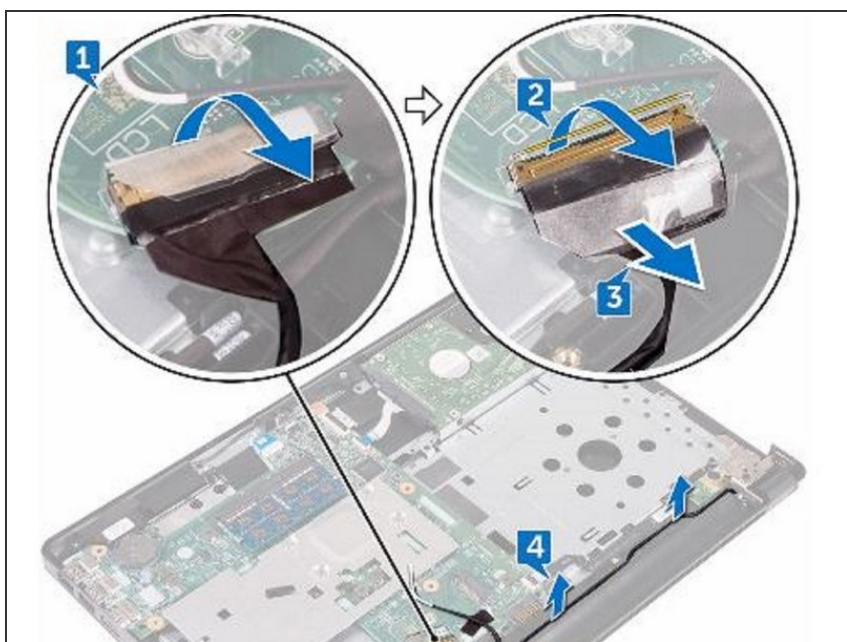
- Align the screw holes on the palm-rest assembly with the screw holes on the display hinges.

Step 10 — Replace the Screws



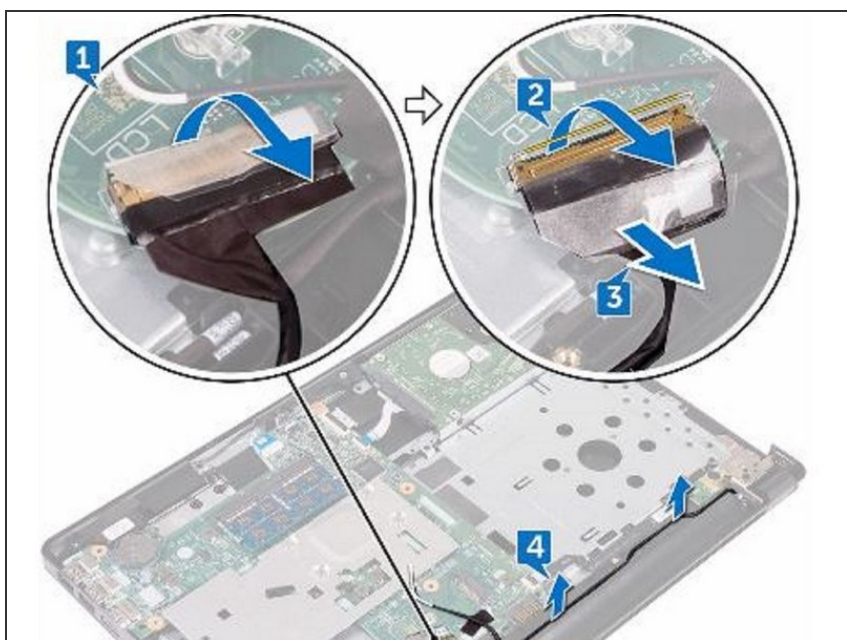
- Replace the three screws (M2.5x8) that secure the display hinges to the palm-rest assembly.

Step 11 — Route the Cables



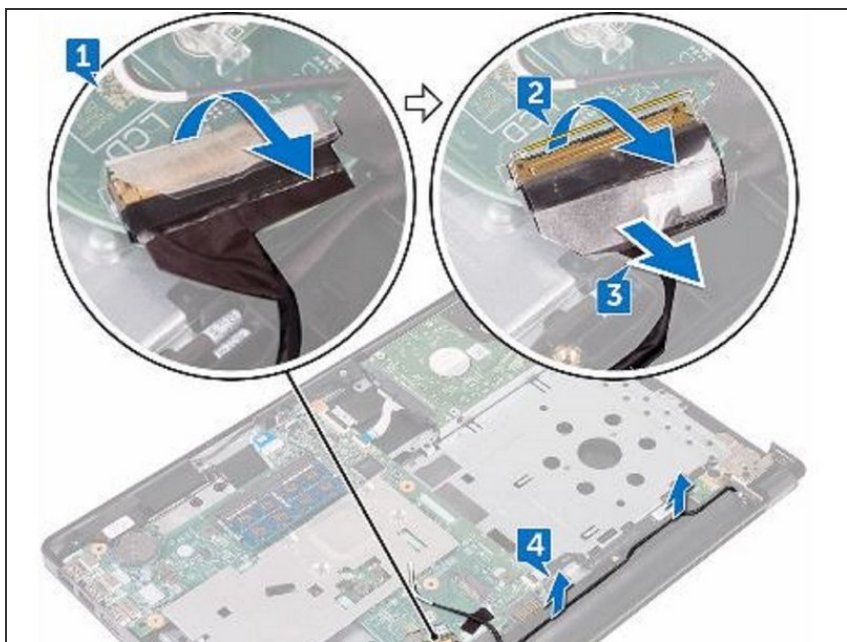
- Route the antenna cables through the routing guides on the palm-rest assembly.

Step 12 — Connecting the Display Cable



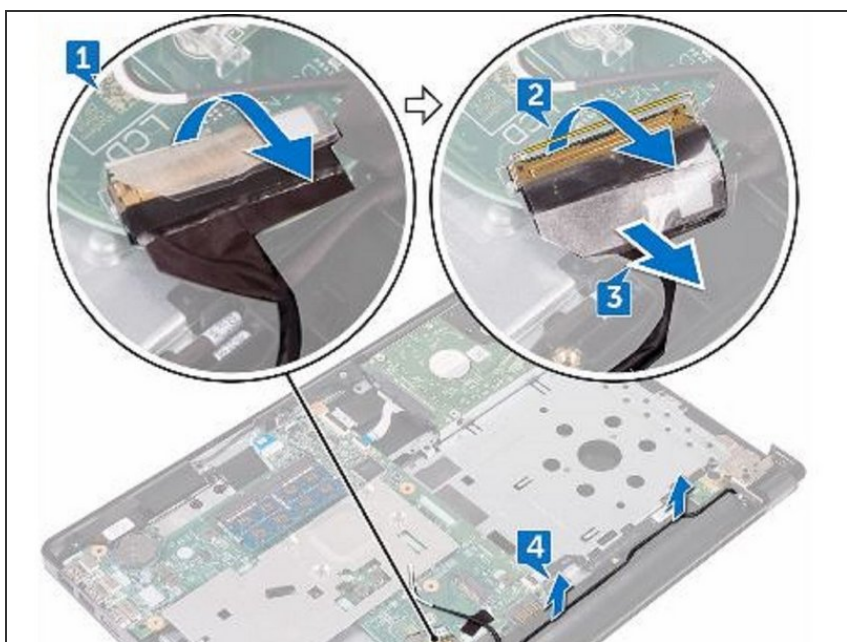
- Connect the display cable from the system board.

Step 13 — Close the Latch



- Close the latch that secures the display cable to the system board.

Step 14 — Adhering the Tape



- Adhere the tape that secures the display cable to the system board.