



iPad 6 Wi-Fi Front Panel Assembly Replacement

This is a prerequisite only guide.

Written By: Sam Goldheart



INTRODUCTION

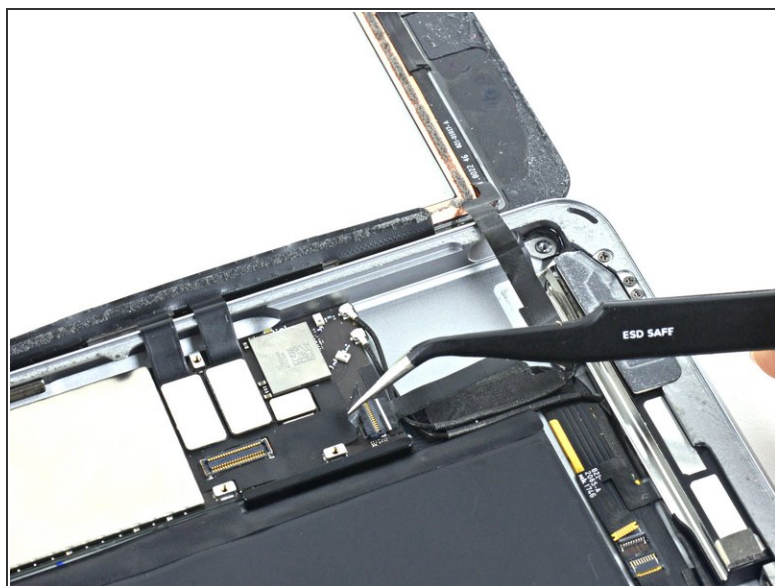
This is a prerequisite only guide for the front panel replacement.



TOOLS:

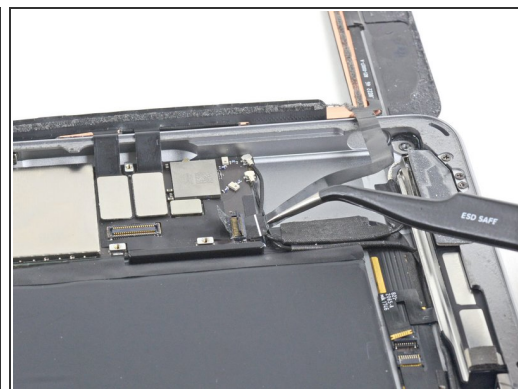
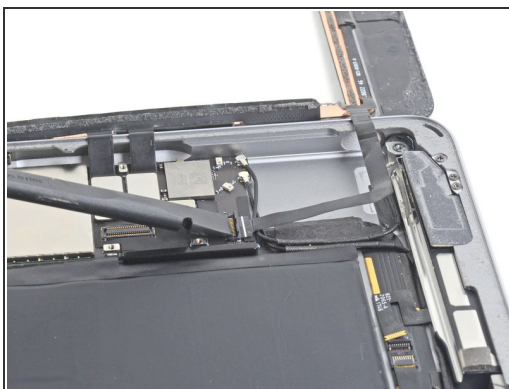
- [Spudger](#) (1)
 - [Tweezers](#) (1)
-

Step 1 — Front Panel Assembly



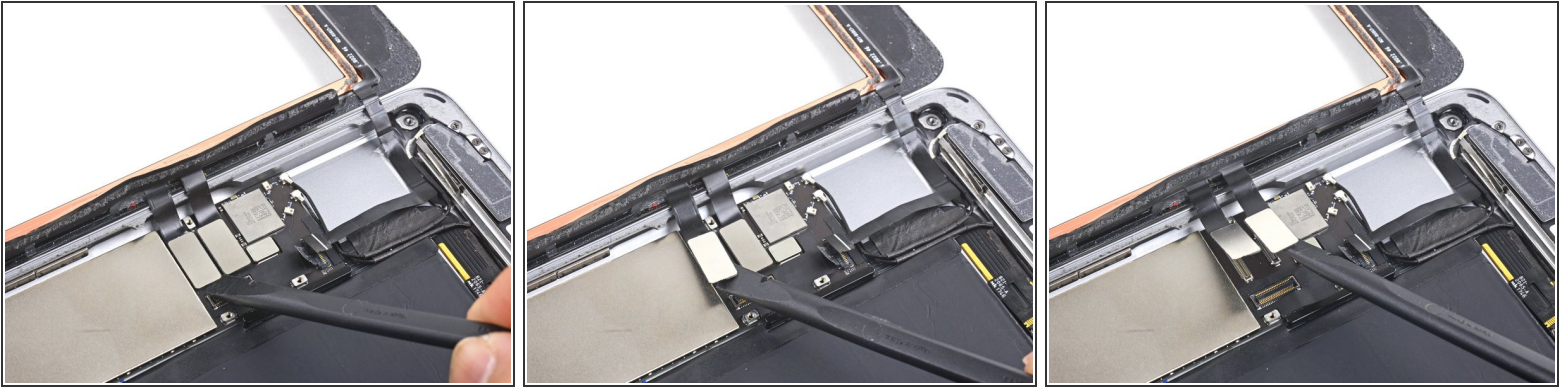
- Remove any tape covering the home button ribbon cable connector.

Step 2



- Use the flat end of a spudger to flip the tab on the home button ribbon cable ZIF connector upward.
- Carefully pull the home button ribbon cable straight out of the ZIF connector.

Step 3

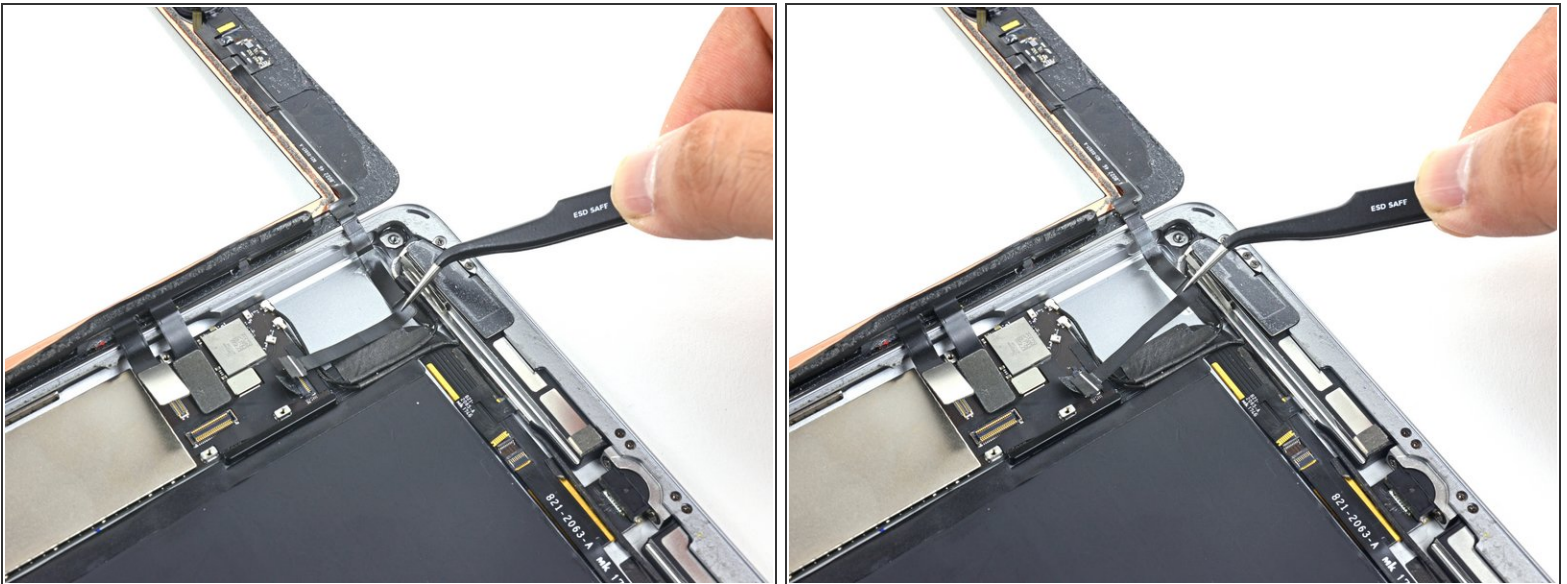


- Use a the flat end of a spudger or a fingernail to carefully pop the two digitizer cable connectors straight up from their sockets.

⚠ To avoid damaging your iPad, pry only on the connectors themselves, **not** on the socket on the logic board.

- ☑ During reassembly, make sure that these connectors are completely seated in their sockets, or you may encounter display issues.

Step 4



- Carefully peel the home button ribbon cable up off of the adhesive holding it to the rear case.

Step 5



- Remove the front panel assembly.
- If you experience "ghost" or "phantom" touch input issues with your new display, this can be resolved by adding a layer of very thin insulating tape, such as [Kapton \(polyimide\) tape](#), to the highlighted areas on the back of the panel. **iFixit panels come with the proper insulation, and should not require the addition of any tape.**
 - ☑ Without the proper insulation, these areas of the digitizer can ground out against other components, causing touch input malfunction.
 - ⓘ The insulation is not visible to the naked eye, and is different from the foam dust barrier strips found on many iPads.

To reassemble your device, follow these instructions in reverse order.