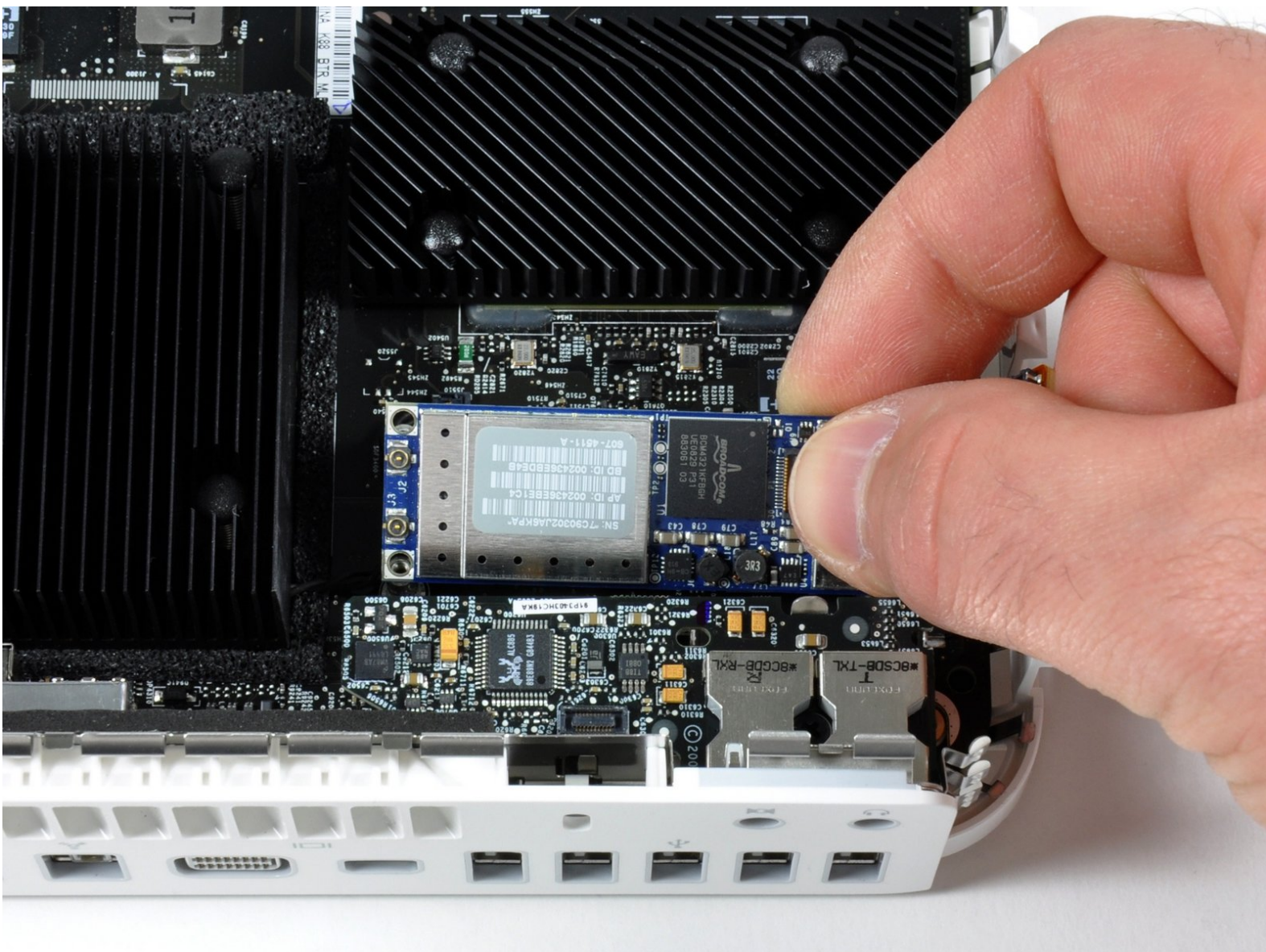




# Mac mini Model A1283 AirPort/Bluetooth Combo Card Replacement

Written By: Walter Galan



---

## INTRODUCTION

Replace your broken AirPort/Bluetooth combo card to regain wireless connectivity.

---

### TOOLS:

- [Jimmy](#) (1)
  - [Phillips #00 Screwdriver](#) (1)
  - [Spudger](#) (1)
-

## Step 1 — Top Housing



- Power down your Mac mini, disconnect all of the cables, and flip it over.
- Insert the Jimmy into the crack between the aluminum top housing and the plastic lower housing.
- The Jimmy should reach a stop about 3/8" down.

## Step 2



- Gently bend the Jimmy outwards to pry the crack open a little larger and lift the lower housing up a small amount.
- ⓘ There are several plastic clips on the lower housing that fit into a channel in the aluminum top housing. Your goal is to use the Jimmy to push these clips inward enough to free them from the channel, while gently pulling up on the lower housing.



### Step 3



- Once you have the first side free, rotate the Mac mini and start prying up on the front edge.
- Use the same prying motion to both bend the clips inward and lift the lower housing up out of the top housing.

### Step 4



- You may need to move the Jimmy along the edge to pry up all of the clips. Be patient and do a little bit at a time.

## Step 5



- Keep working around the perimeter, freeing the clips along the final edge.


## Step 6



- Flip the Mac mini back over and lift the top housing off of the lower housing.

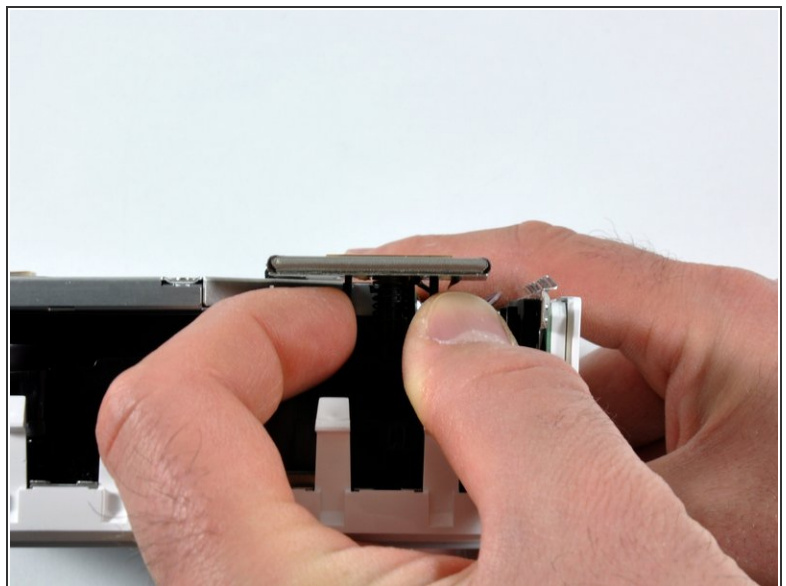
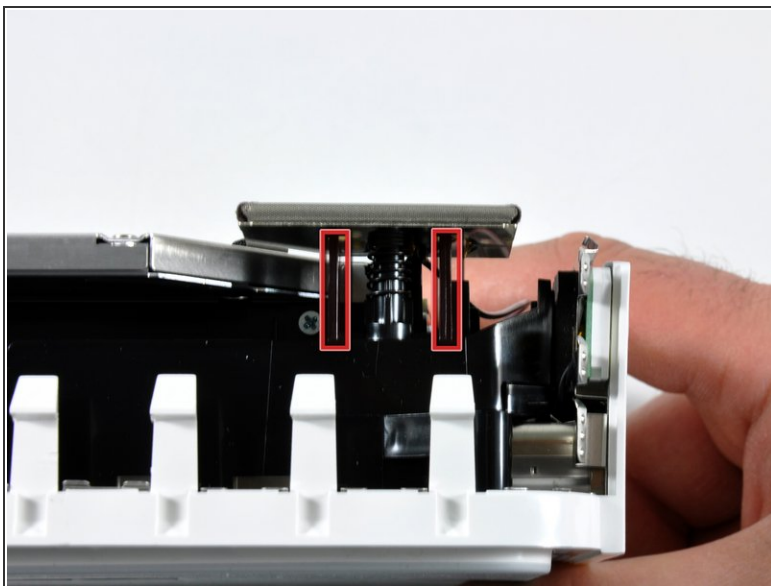
## Step 7 — Internal Frame




 In the next few steps you will be removing the AirPort and Bluetooth antennas (shown in red) from the internal frame. Be very careful, as breaking the brackets will require replacing the internal frame.


- We will first remove the AirPort antenna, located in the lower left corner of this picture.

## Step 8



- Slightly squeeze the two retaining arms toward each other and lift the AirPort antenna off its post.

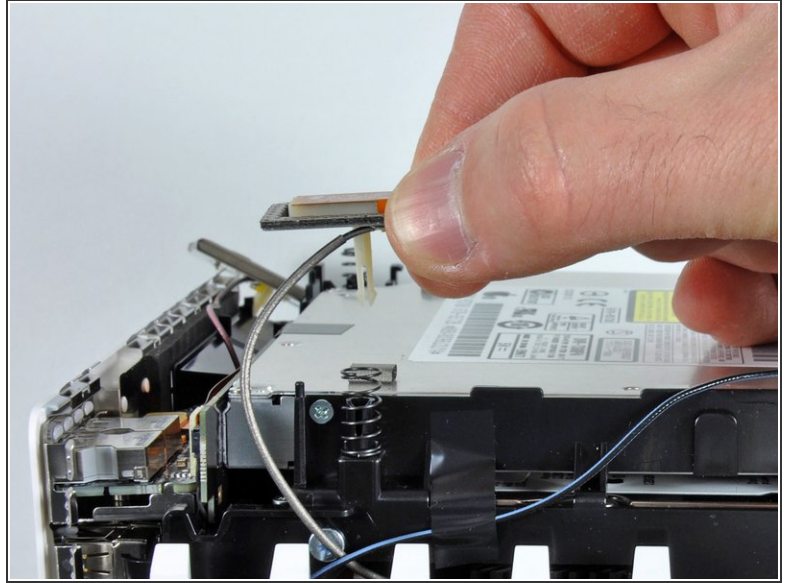
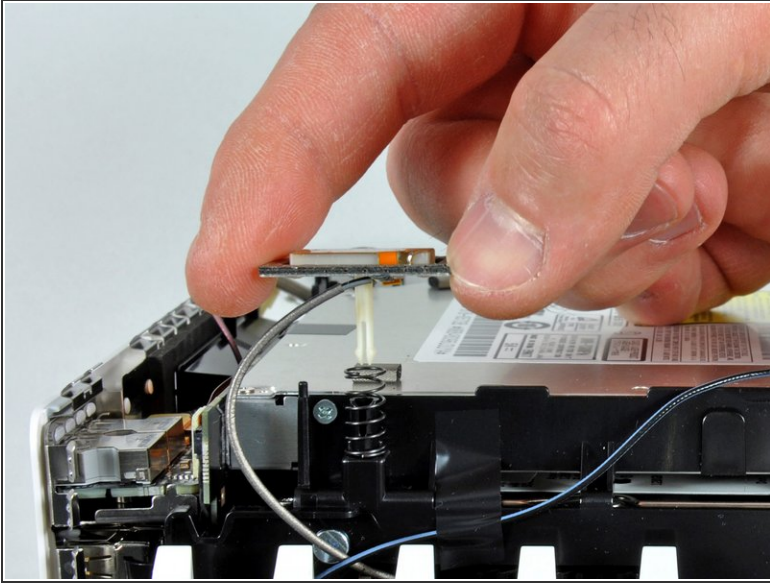
 Squeezing the two posts excessively will surely break them off the internal frame. Work delicately.

-  During reinstallation, you will have to slightly squeeze the two posts together so they fit into the openings on the AirPort antenna board.

This document was generated on 2020-11-25 07:40:18 AM (MST).

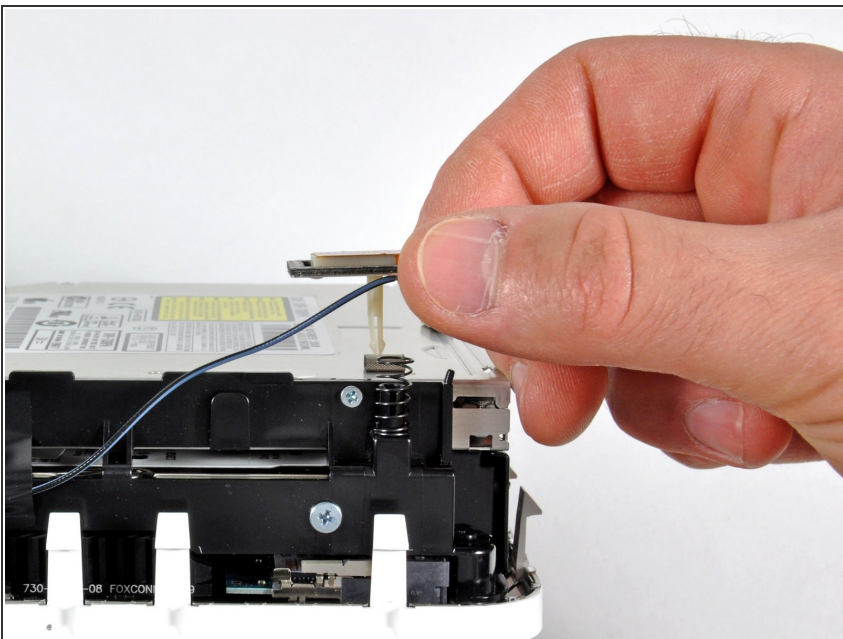


## Step 9



- i The two Bluetooth antenna boards simply lift off the internal frame.
- Grab the Bluetooth antenna nearest the port side of the computer by the edges of the board and pull it straight up off the internal frame.
- ⚠ Pull carefully, as it may offer significant resistance and release suddenly.

## Step 10



- Remove the antenna board near the front of the mini by pulling it straight up off the internal frame.
- If necessary, remove the piece of tape securing the antenna leads to the internal frame.
- i Be sure to keep track of the springs under each of the three antenna boards.

## Step 11



- Use the flat end of a spudger to pry the audio ribbon cable connector up off the audio board.

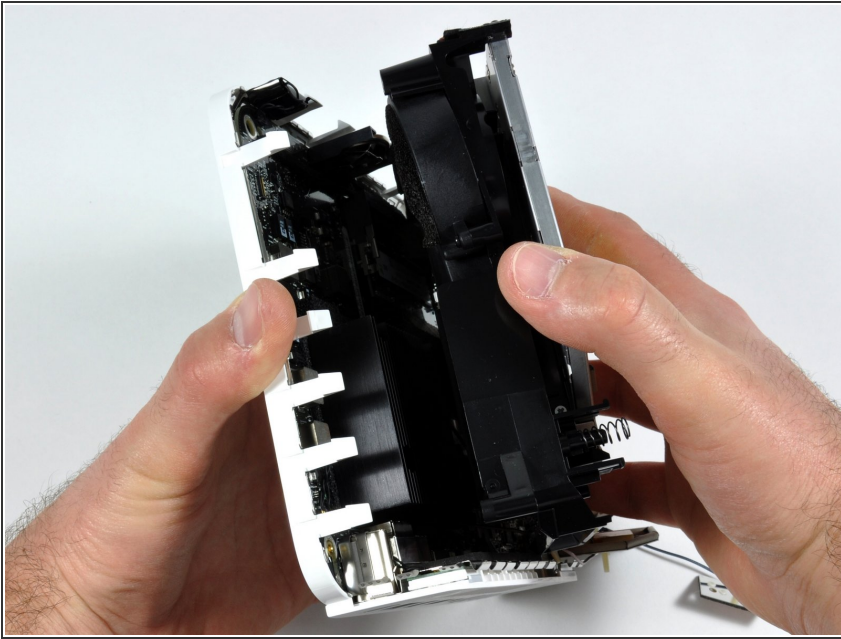
## Step 12



- Remove the following four screws securing the internal frame to the bottom housing:
  - Three 6.7 mm Phillips #00 screws
  - One 9.5 mm Phillips #00 screw
- ⓘ The screw in the lower right corner of this image is recessed deep in the internal frame and longer than the other three screws. A flashlight and a thin screwdriver aid in removal.



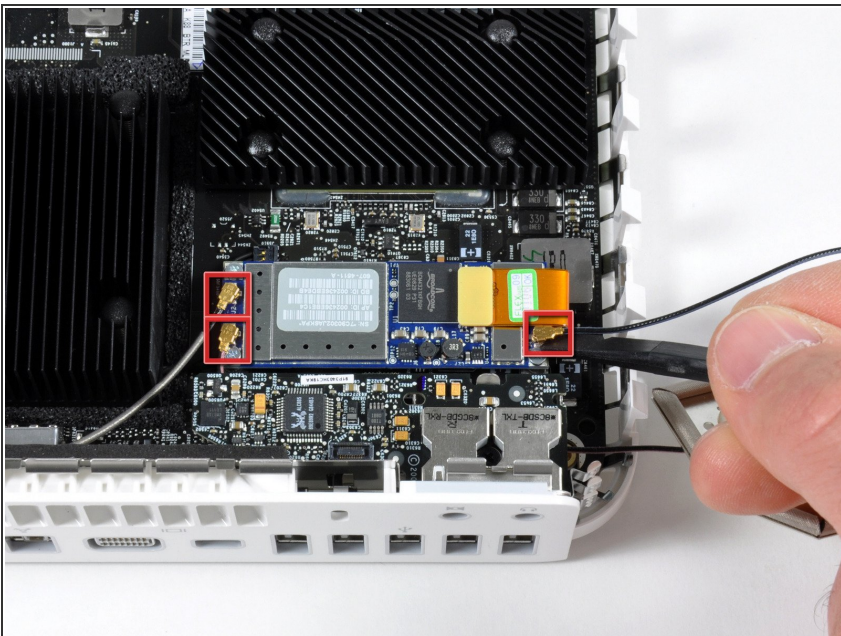
## Step 13



- Lift the internal frame off the bottom housing, starting at the rear edge, until you feel the concealed edge connector on the motherboard disconnect. Then lift straight off, minding the bluetooth and 802.11 antenna cables.

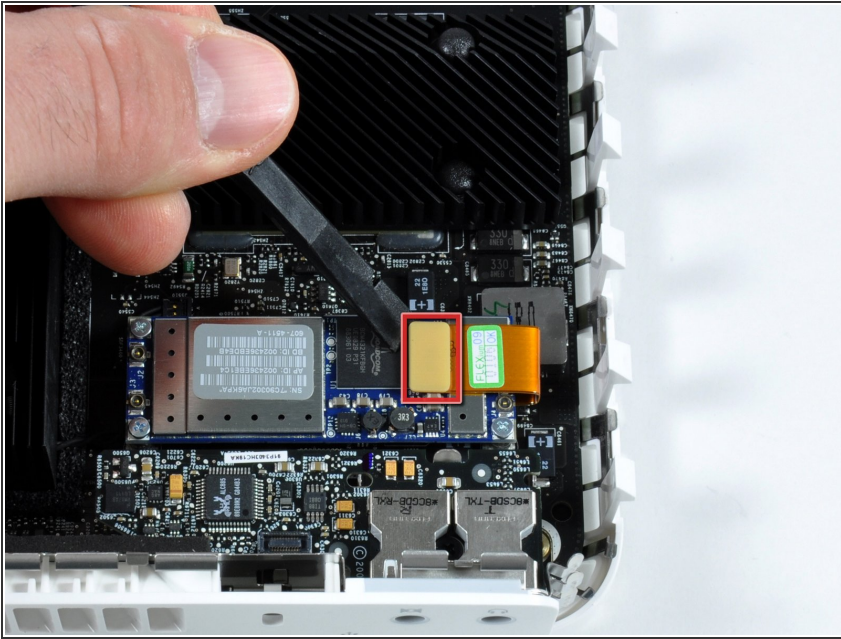
- ⓘ When reassembling, the wifi antenna wire routes to the inside of the vent and then over the top of the vent.

## Step 14 — AirPort/Bluetooth Combo Card



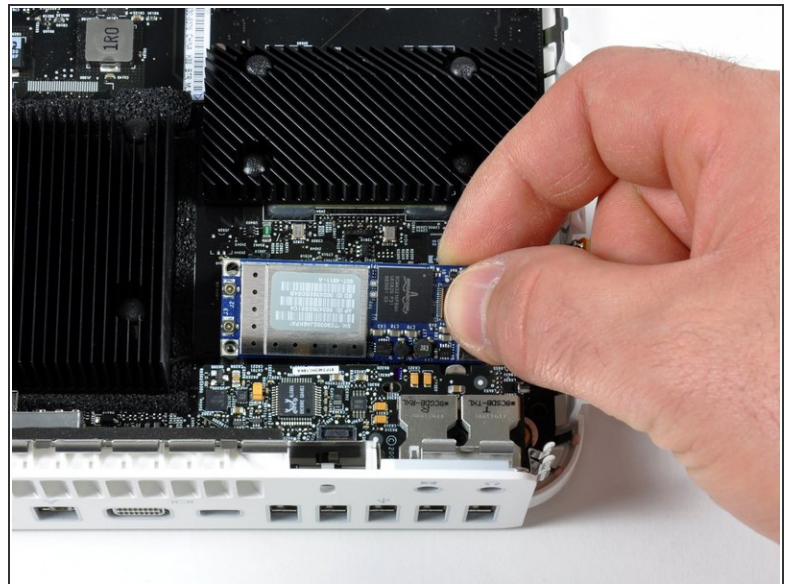
- Use the flat end of a spudger to pry the three antenna connectors off the AirPort/Bluetooth combo card.
- ⓘ The black/blue antenna cable attaches to the AirPort card near the corner of the mini, and the white antenna cable attaches nearest the center of the mini.

## Step 15



- Use the flat end of a spudger to pry the AirPort/Bluetooth ribbon cable connector up off the combo card.

## Step 16



- Remove the three silver Phillips screws securing the combo card to the logic board.
- Lift the combo card out of your mini.

To reassemble your device, follow these instructions in reverse order.