



# Insignia NS-24ER310NA17 Disassembly

This guide will take you through the process of...

Written By: Hannah Berenjfoorosh



# INTRODUCTION

This guide will take you through the process of disassembling the housing of the Insignia NS-24ER310NA17 in order to gain access to the inner parts. This is a primary step for most replacement guides regarding this device.

---

## TOOLS:

Phillips #00 Screwdriver (1)

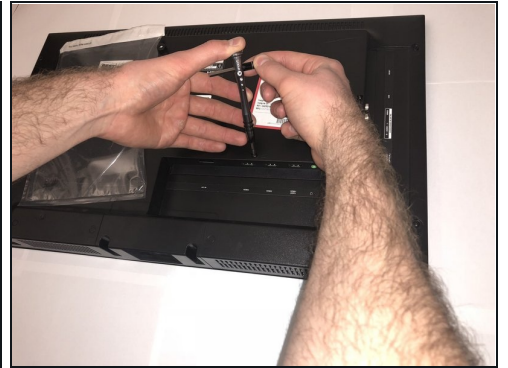
---

### Step 1 — Remove the base



- Rest the TV on its top edge so you have access to the base.
- Use a Phillips #2 screwdriver to take out the four screws on the bottom of the base.
- Remove the base from the frame.

## Step 2



- Lay the TV face down.
- Use the Phillips #00 screwdriver to remove all of the Phillips Head Screws from the the back of the TV.

## Step 3 — Pry the TV open

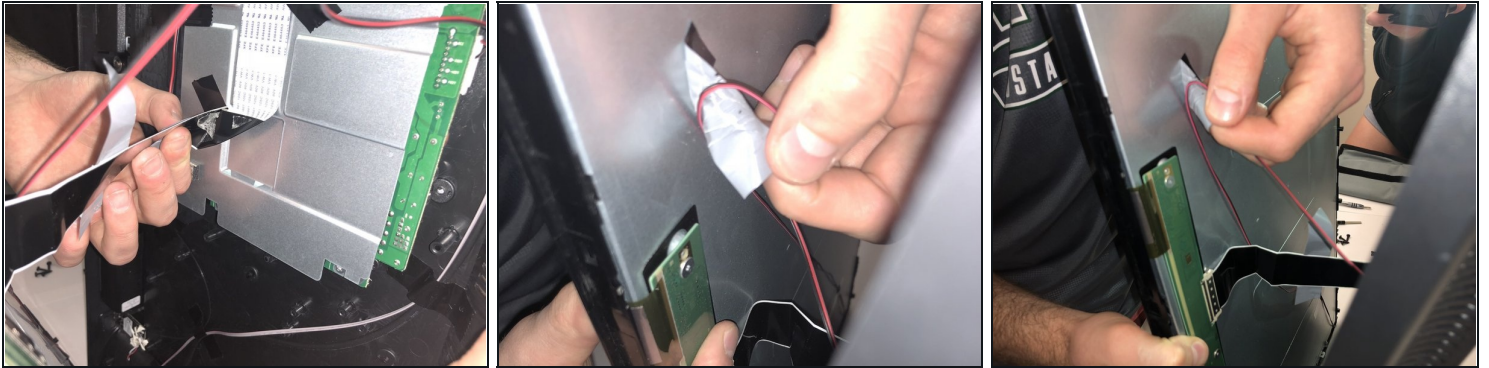


- Stand the TV on its top edge.
- Gently pry apart the front and back of the TV.
- ⓘ The two halves should pull apart easily since there are no longer any screws holding it together.

⚠ The two halves will still be connected by wires and cables that are taped to each side. Do not pull on these. We will remove them in the next step.

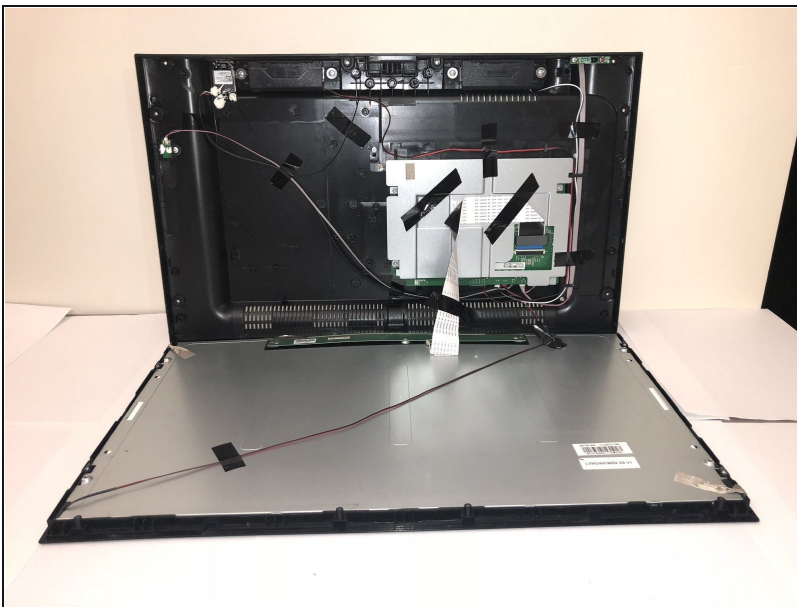


## Step 4 — Disconnect wires



- ① As mentioned in the previous step, there are wires still connecting the two halves.
- Remove all the pieces of tape to detach the wires from both sides.
  - You want to gently peel the tape off, without pulling on the wires.

## Step 5



- Spread apart your TV the rest of the way, but do not disconnect any of the wires.
- ① You should have a clear view of the inside on both sides.

To reassemble your device, follow these instructions in reverse order.